

CONTENT

Minha Casa—Nossa Cidade:
From “Minha Vida” to “Nossa Cidade” P. 3
Written by Rainer Hehl

PART 1: MCMV MINHA CASA, MINHA VIDA PROGRAM

- A Short Introduction to Brazilian Mass Housing P. 15
MCMV Program Overview P. 30
- Beyond Access to Housing P. 59
Social Welfare or Free Market Economy? P. 61
Minha Casa, Minha Vida – Entidades P. 64
Undoing the Standards P. 66
Progress or “Déjà Vu”? P. 68
Sorry for the Inconvenience, We are Changing Brazil P. 70
Access to Housing versus Access to the City
—Interview with Júnia Santa Rosa P. 72

PART 2: APB ARQUITETURA POPULAR BRASILEIRA

- A Review of Contemporary Brazilian Vernacular P. 77
- An Index of Popular Brazilian Architecture (Excerpt) P. 82
- A Language for Popular Architecture P. 125
A Non-Authoritative Approach towards Architecture P. 127
We Make Our Buildings, and Then They Make Us P. 129
Vernacular Modernism P. 132
Popular Architecture as a Political Project P. 134
A New and Radical Vocabulary P. 136
Choque de Ordem P. 138
Cultural Exchange and Urban Integration
—Interview with Leticia Monte P. 140

PART 3: MCNC MINHA CASA NOSSA CIDADE PROJECTS

- Innovated Brazilian Mass Housing for Social Change P. 143
- Charter of Claims P. 146
- Rio de Janeiro: Colônia Juliano Moreira P. 155
Mutual Growth P. 176
Charged Voids P. 200
Undoing the City of Dichotomies P. 220
- São Paulo: Brasilândia P. 227
Inhabiting the Edge P. 250
Looking at the Urban Edge P. 275
- Brasília: Santa Maria P. 281
The Urban Satellite P. 302
The Satellite City as Future Urban Model P. 325
Aguas Claras P. 330
- Pará: Parauapebas P. 335
Networked Infill P. 362
[1m², 25 ha] P. 380
Whatever Happened to the Amazon? P. 405

MCNC Diretrizes:
Guidelines for Improving the MCMV Program P. 413

Models in Circulation – A Tale Of Two Cities P. 461
Written by Marc Angélil and Cary Siress

Contributors P. 492
Image Credits P. 495
Colophon P. 496

MINHA CASA—NOSSA CIDADE: FROM “MINHA VIDA” TO “NOSSA CIDADE”

We feel alike, we feel akin in the towns, in the villages, in the settlements; not because we suffer from afflictions and irritations, the law and the police, but because the love of the streets unites us, levels us, brings us together. [...] The street continues, killing nouns, transforming the meaning of words, imposing on the dictionaries the term it invents, creating the jargon that will become the standard legacy of the lexicons of tomorrow.

— João do Rio, The Enchanting Soul of the Streets¹

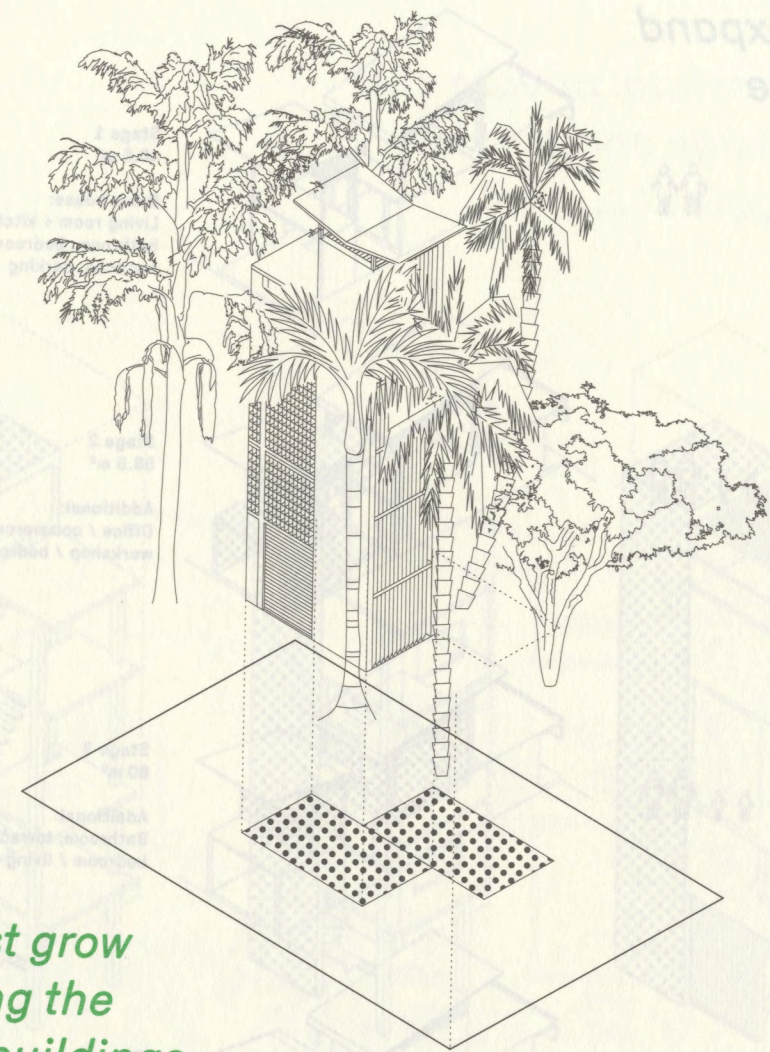
The present book publication arrives in a moment of change. The exhibition “Minha Casa—Nossa Cidade: Innovating Popular Housing in Brazil” preceding this publication was opened at the same time that a major event in the country’s history took place in the streets of Rio de Janeiro. Millions of people

¹ João do Rio, *A alma encantadora das ruas / The Enchanting Soul of the Streets*, trans. Mark Carlyon (Rio de Janeiro: Editora Cidade Viva, 2010), 49-51.

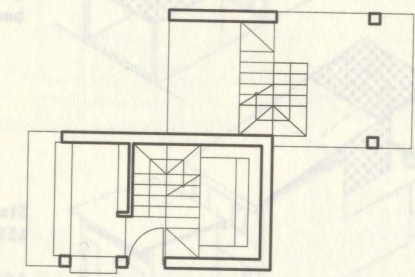


A basic structure provided by the MCMV program ...

Model of the tower-house typology showing the basic structure. Two attached tower houses share the same circulatory infrastructure.

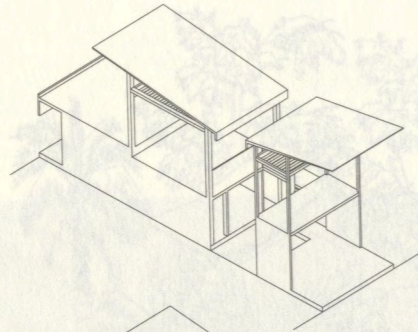


Let the forest grow by minimizing the footprint of buildings.

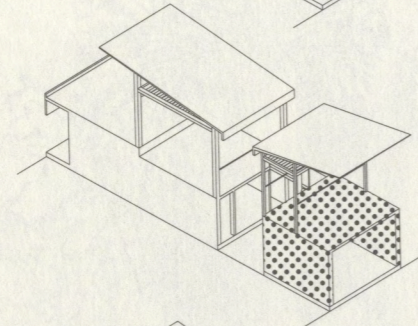


The double tower house includes individual entrances on the ground floor. Using the typical plot size in accordance with the MCMV program, the proposed vertical typology increases density without reducing the ground surface, leaving it available for vegetation growth.

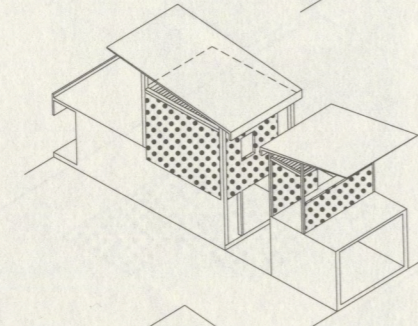
The basic structure should encourage residents to expand and customize their unit.



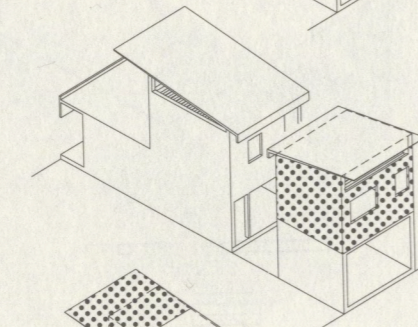
Stage 1
40.5 m²
Basic house:
Living room + kitchen,
bathroom, bedroom,
terraces, parking



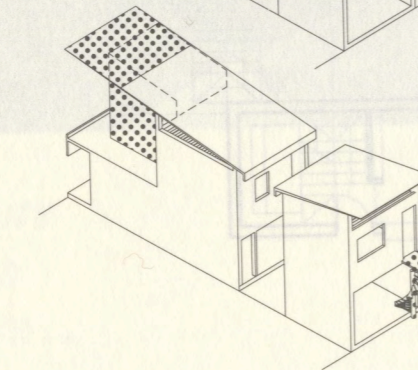
Stage 2
58.5 m²
Additional:
Office / commerce /
workshop / bedroom



Stage 3
80 m²
Additional:
Bathroom, terraces,
bedroom / living room

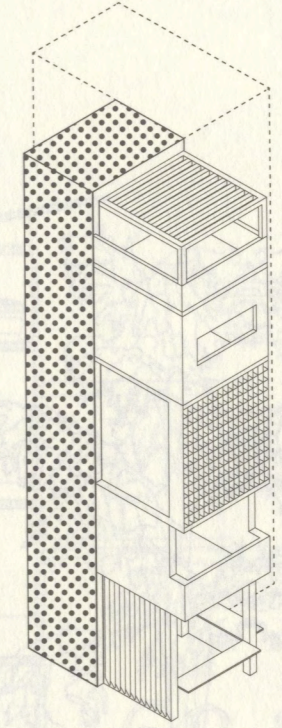
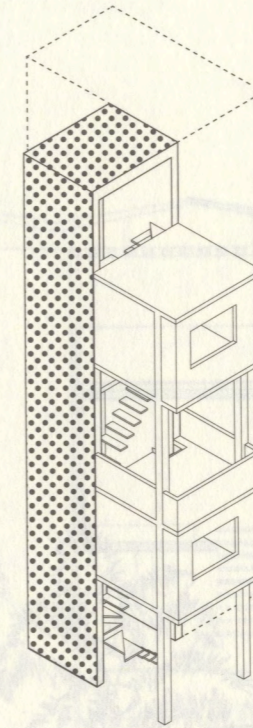
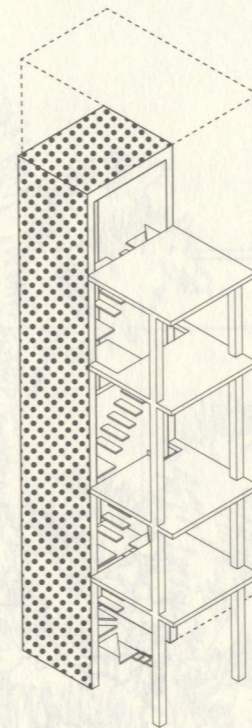


Stage 4
98 m²
Additional:
Office / workshop /
bedroom / living room



Stage 5
111.3 m²
Additional:
Bedroom and external stair

City and nature, private and public, inside and outside ... blend together ...



As a family grows, so can their house!

The construction of a basic typology with the possibility of expansion enhances flexibility and diversity, and, at the same time, drastically reduces the construction costs. The tower house has the possibility to expand up to 98.6 square meters and could potentially contain a workshop, living room, kitchen, dining room, bathroom, living room, two bedrooms, and a terrace.

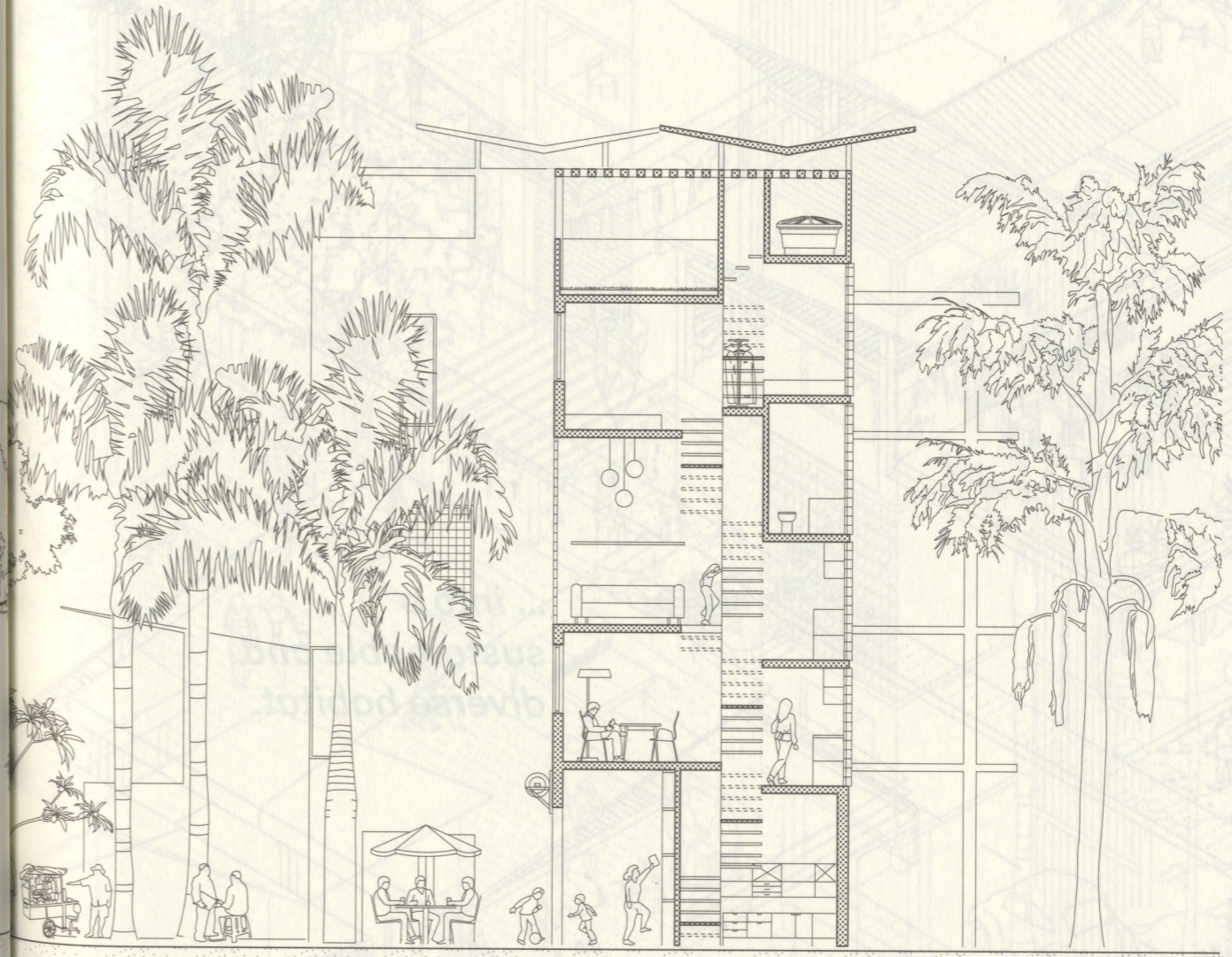
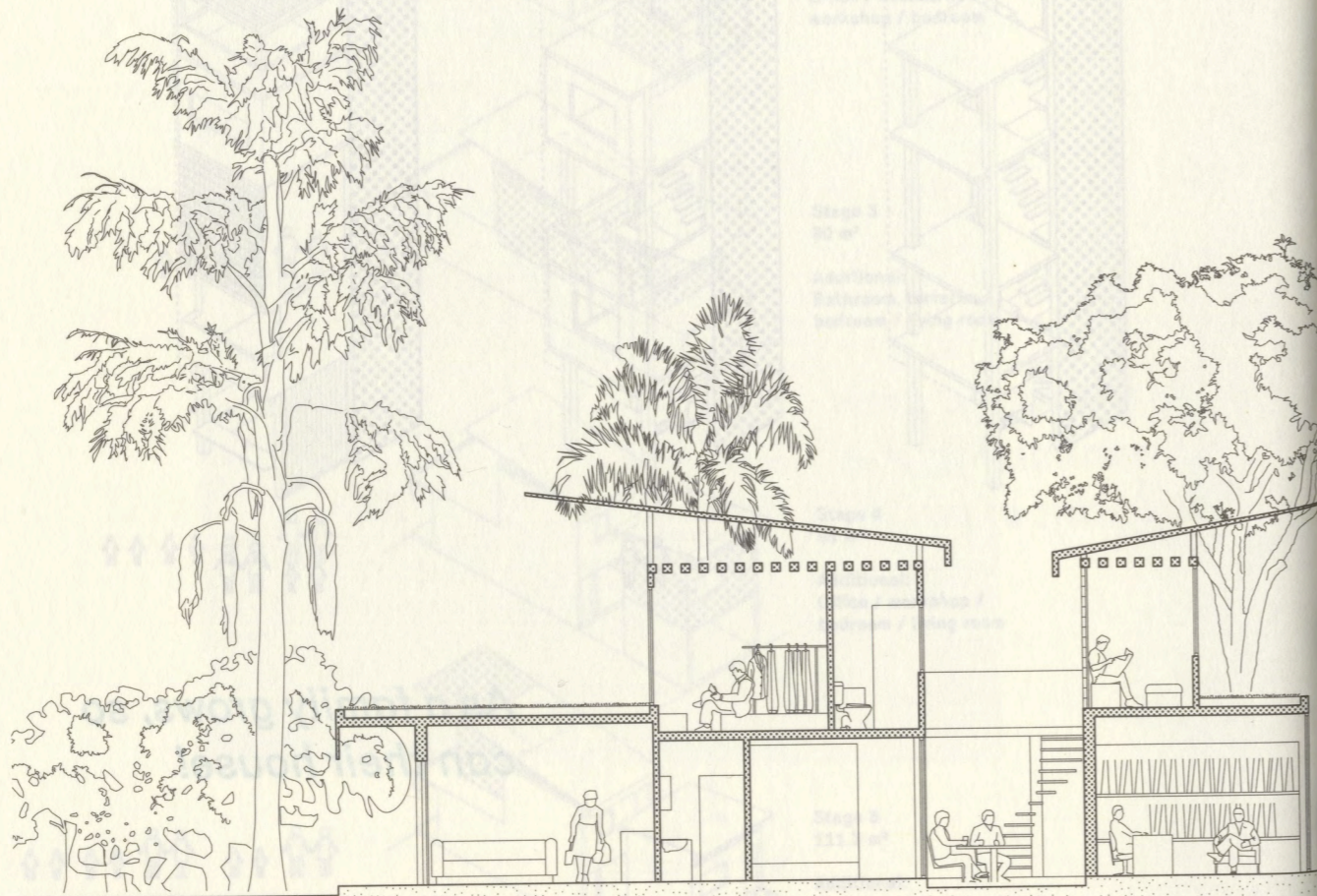
The basic structure should encourage residents to expand and customize their units.

City and nature, private and public, inside and outside blend together ...

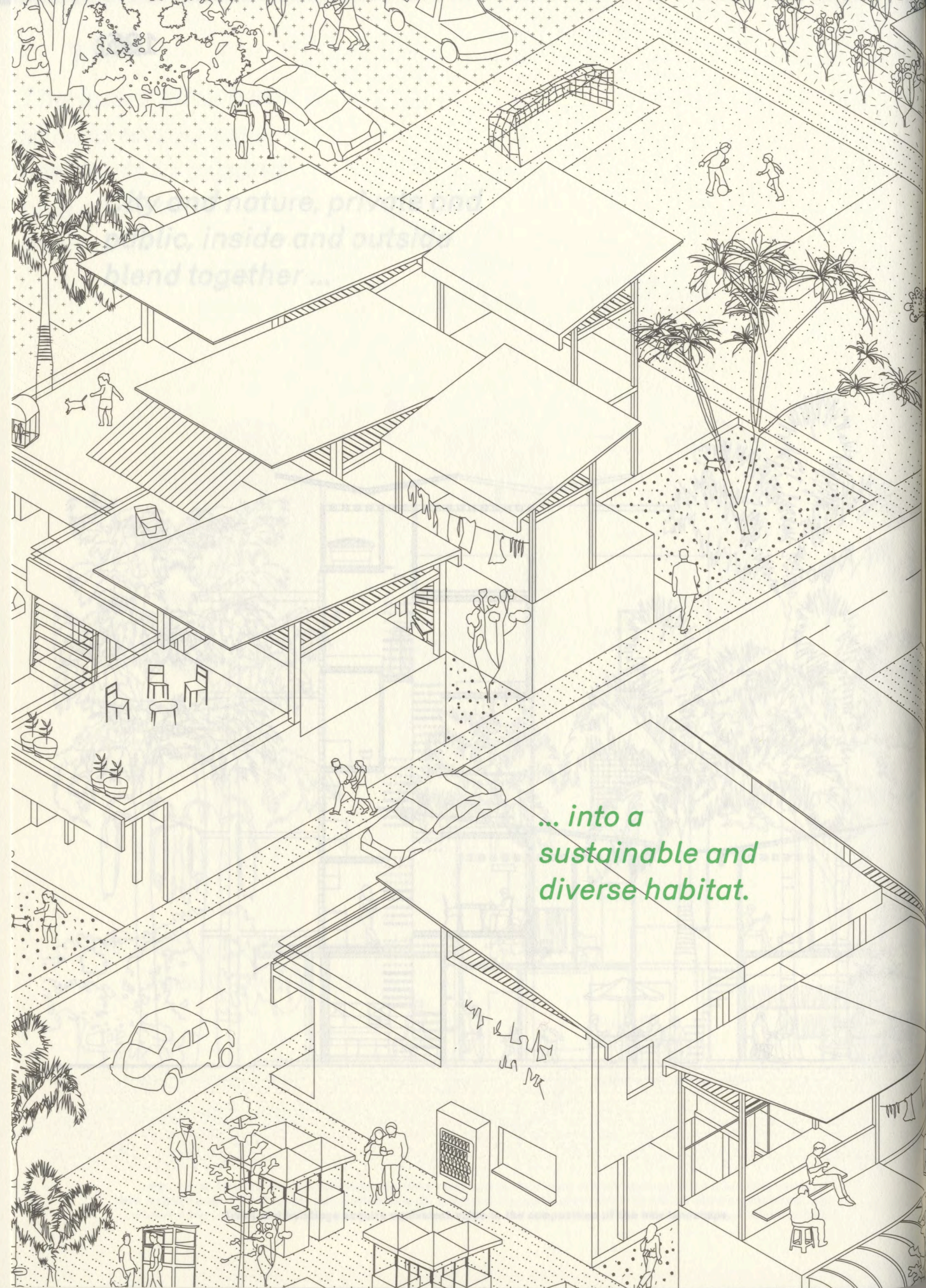
Stage 1
40.2 m²
Basic block:
Living room + kitchen,
bathroom, bedroom,
terrace, parking

Stage 2
50.2 m²
Additional:
Office / workshop,
kitchen, 7 bedrooms

Stage 3
60.2 m²
Additional:
Office / workshop,
kitchen, 7 bedrooms



... construction of a basic (spatial) unit with the possibility of expansion...
... trees and buildings acquire equivalent value in the composition of the new landscape.



... nature, pr
... tic, inside and outsi
... blend together ...

... into a
sustainable and
diverse habitat.

