

Cinema | Tai-Chi | 2 apartments

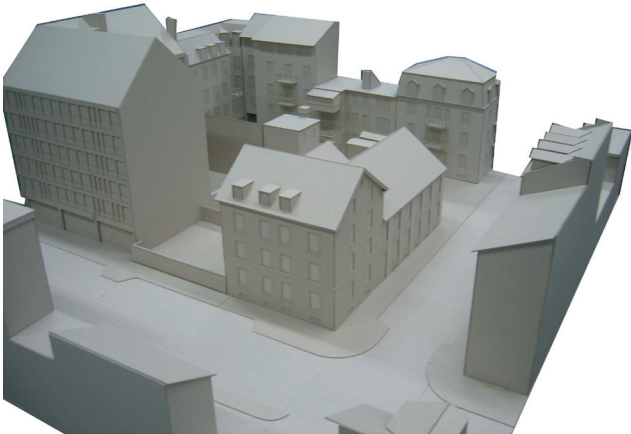
Oskam Didier

winter term 2004/2005

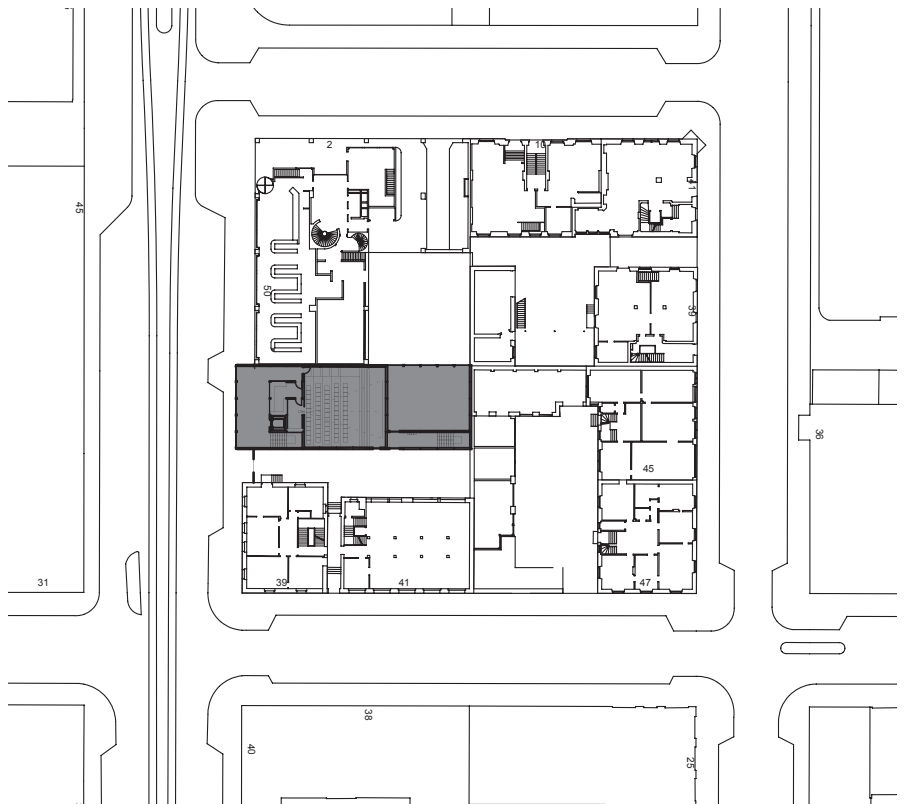
Prof. Arthur Rugg

Ass. Michael Charipé

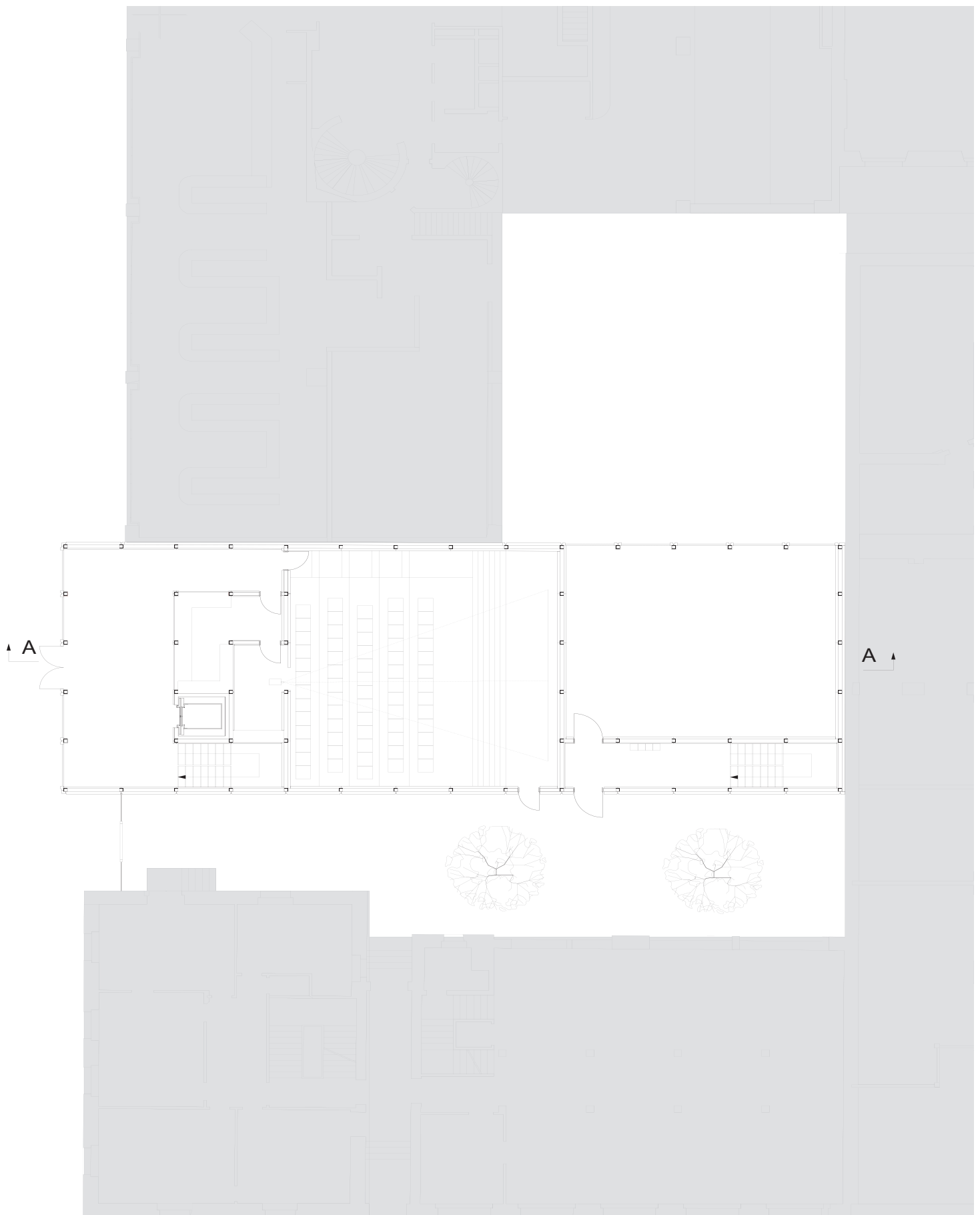
The exercise was to combine a cinema with a Tai-Chi room and two apartments. I had to put it in a existing place in Zürich.

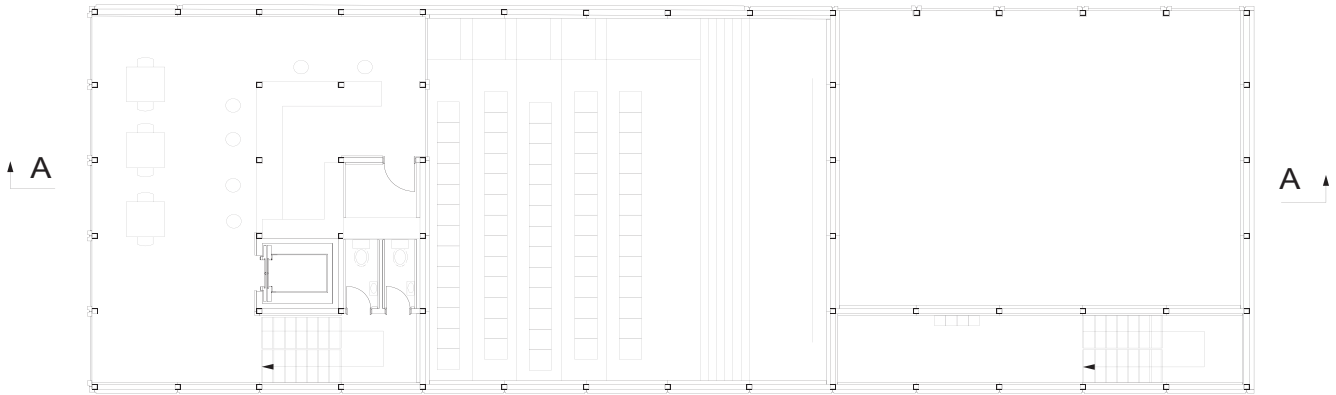


existing place

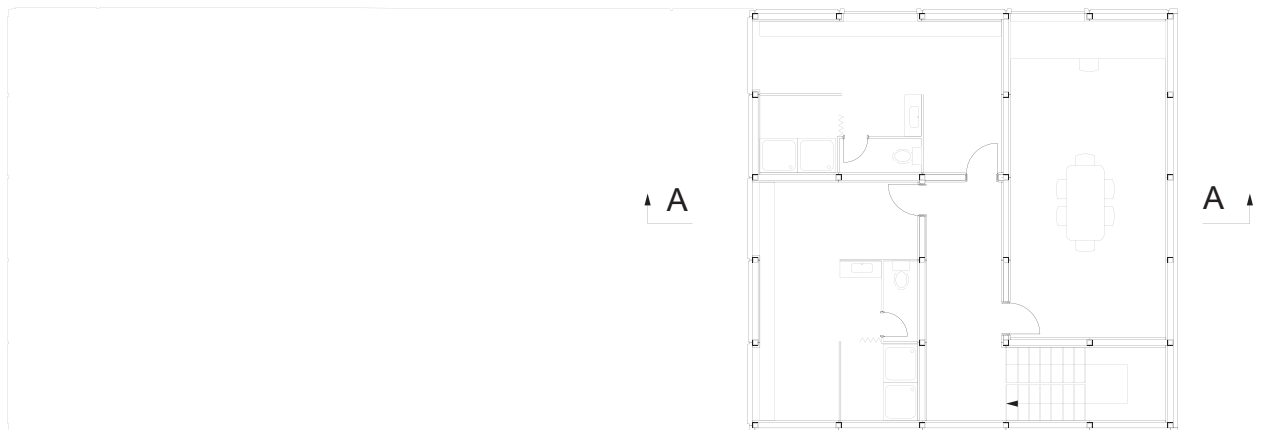


situation 1:1000

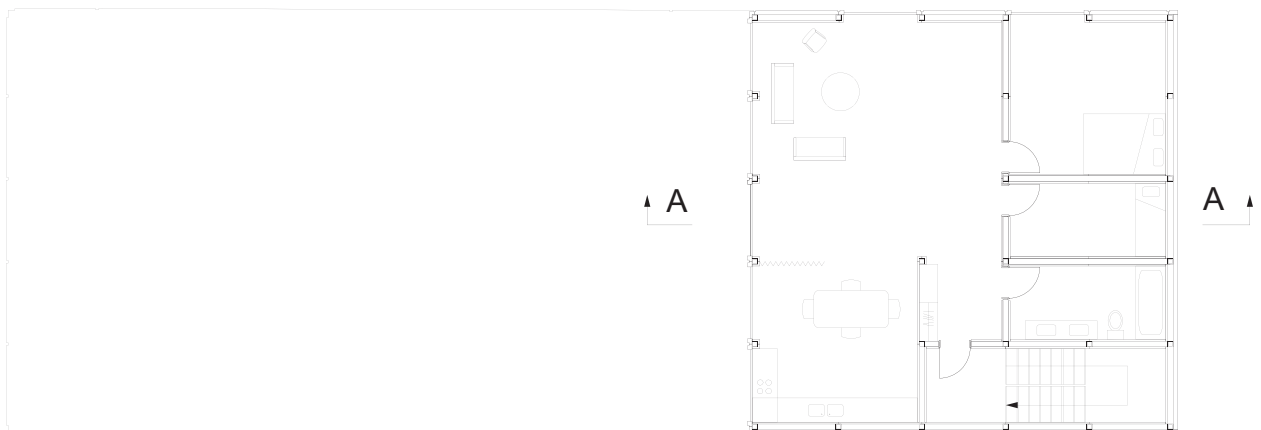




first floor 1:200



second floor 1:200



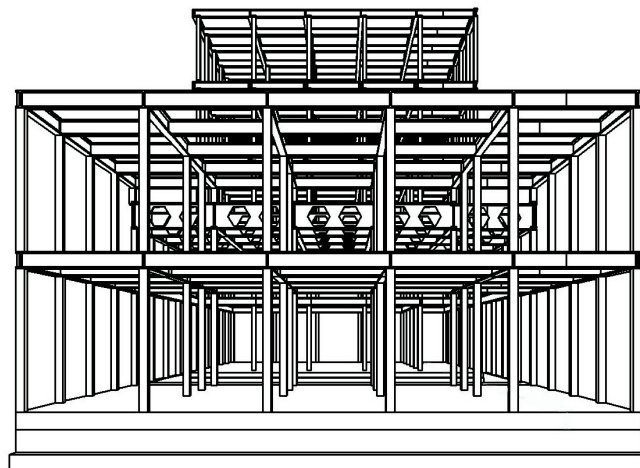
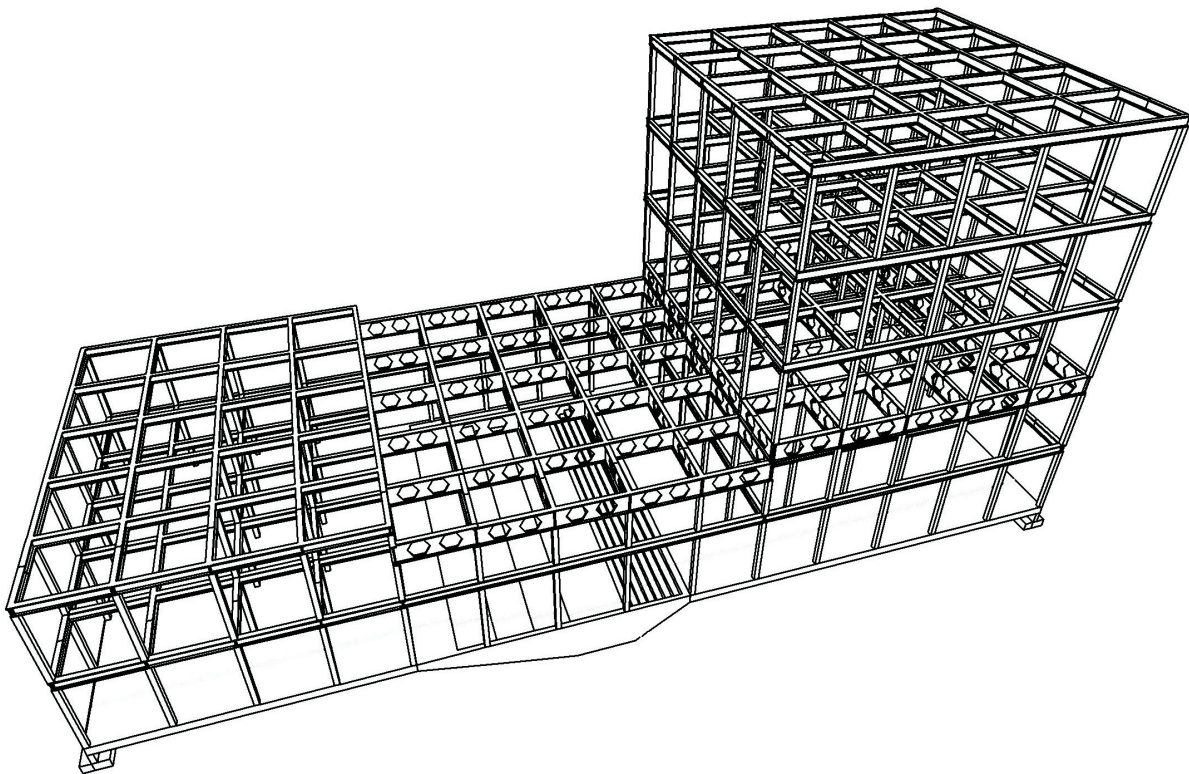
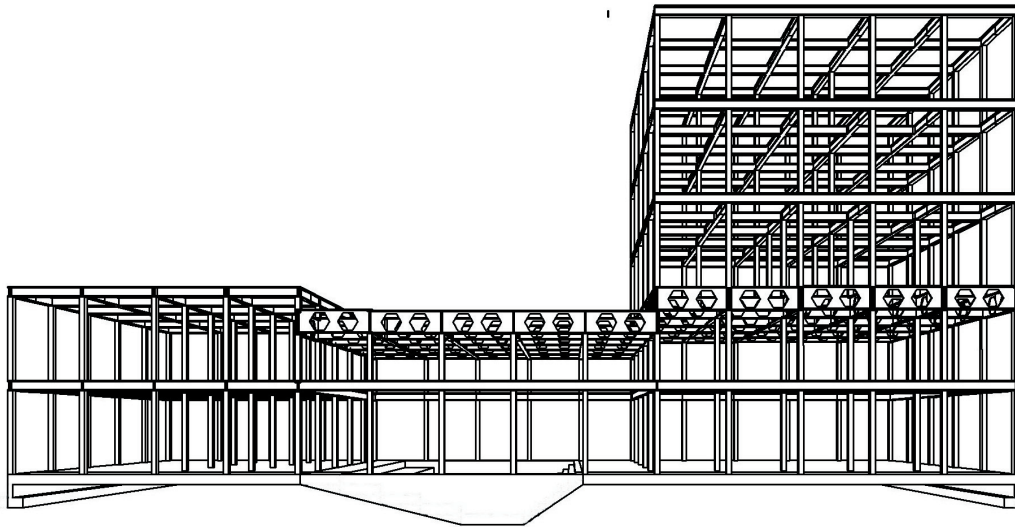
third and fourth Mst. 1:200

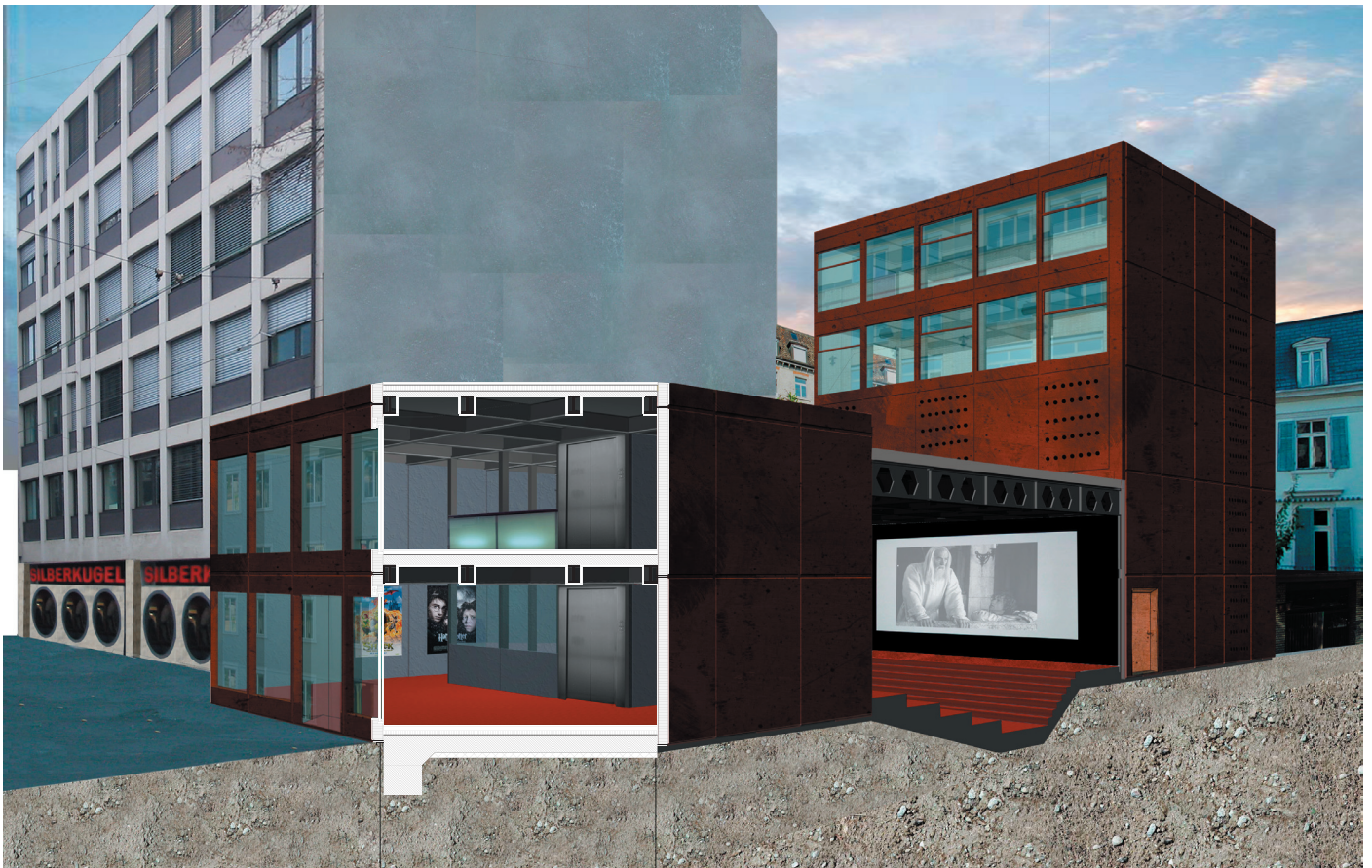


cut A-A 1:250



cladding 1:250

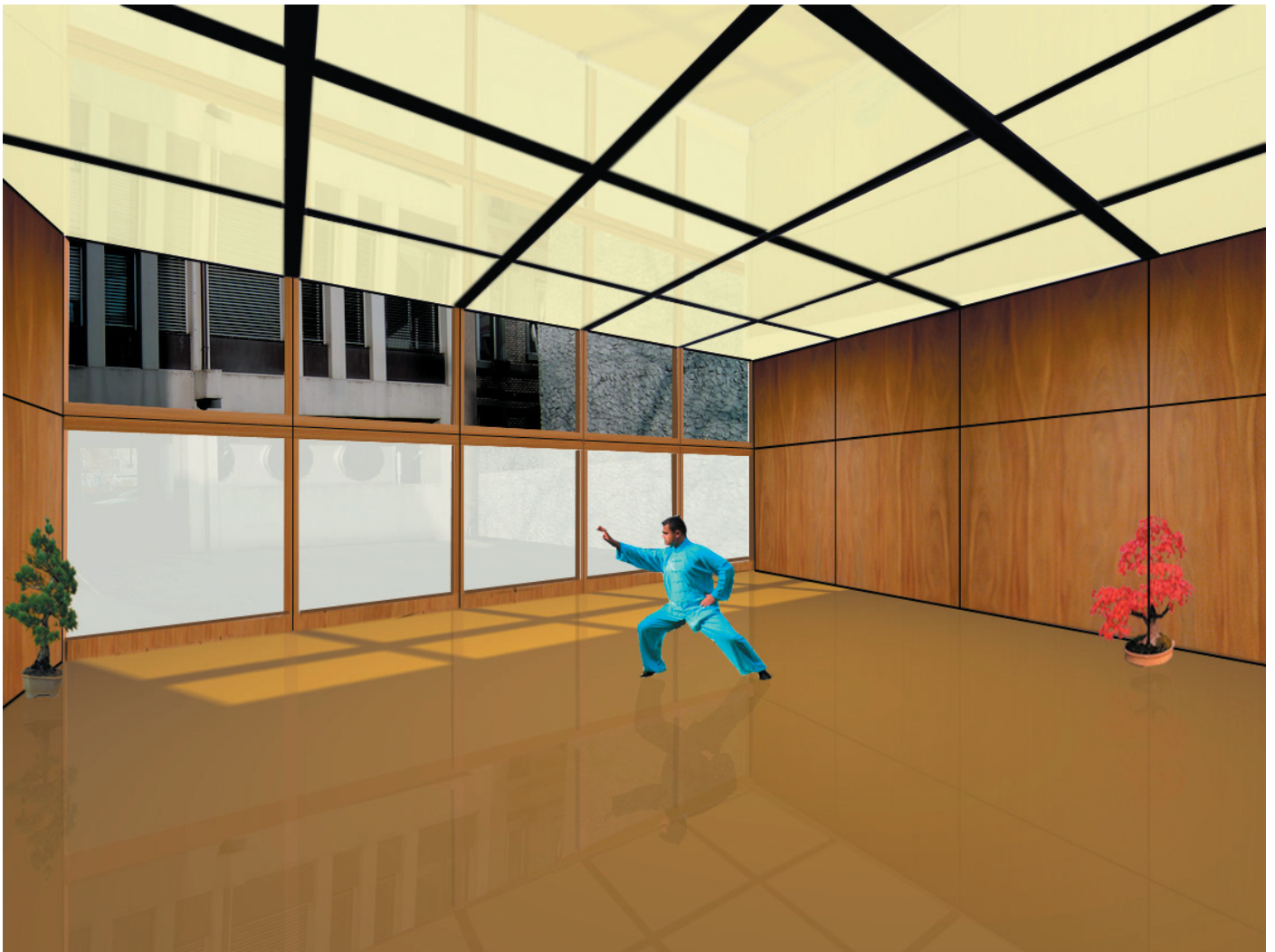




Deckenaufbau	
Bodenbelag	20mm
Unterlagsboden	60mm
Trennlage (Kunststofffolie)	
Trittschalldämmung	20mm
Beton	150mm
Stahlträger	300mm
Gipsplatte	20mm

Bodenaufbau	
Bodenbelag	20mm
Unterlagsboden	60mm
Dämmung	80mm
Feuchtigkeitssperre	
Beton	400mm
Magerbeton	50mm

Wandaufbau	
Sandwichelement: Kupfer	0,8mm
Wärmedämmung	160mm
Stahlblech	0.8mm
Stahlstütze	150mm
Gipsplatte	20mm



interior of the Tai-Chi room

