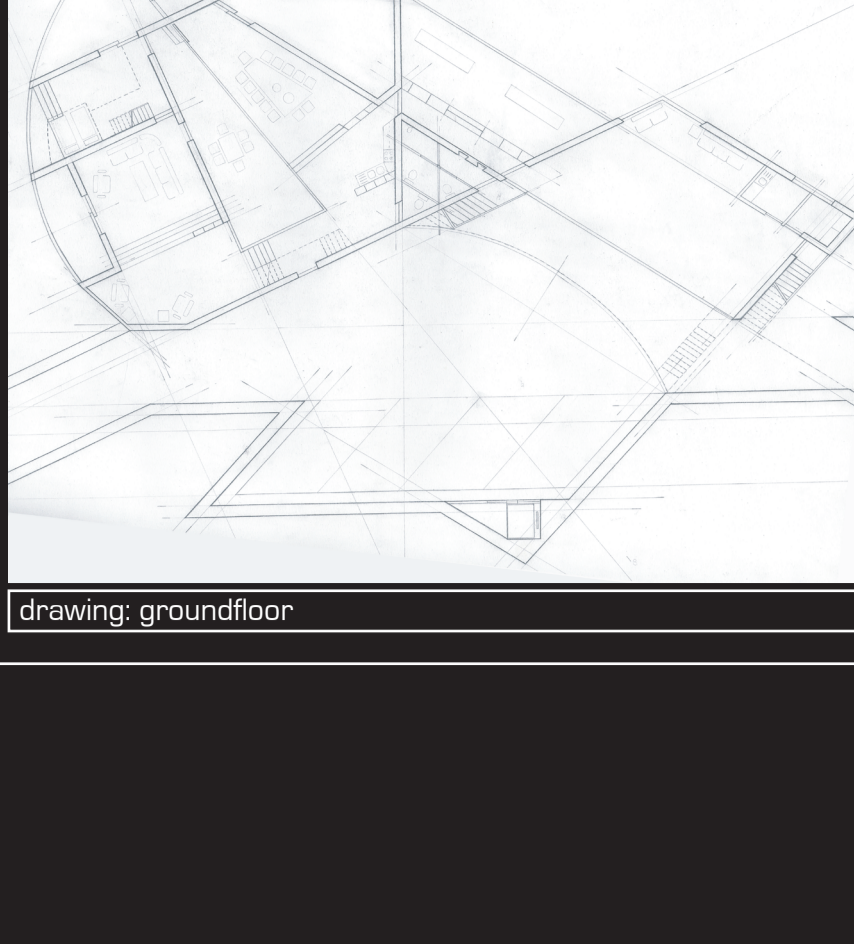
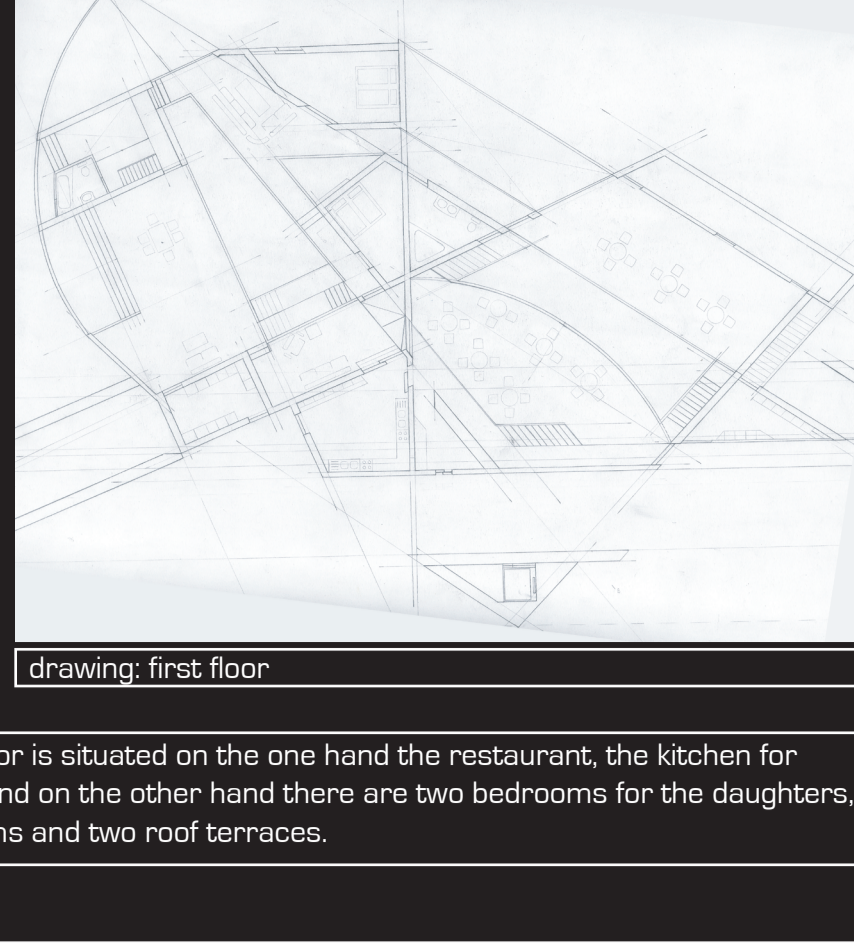


In the ground floor is located the dancing school, the studio and public toilets. In the privat area there is the courtyard, which connects the living room, the sleeping room, the kitchen and the dining room.



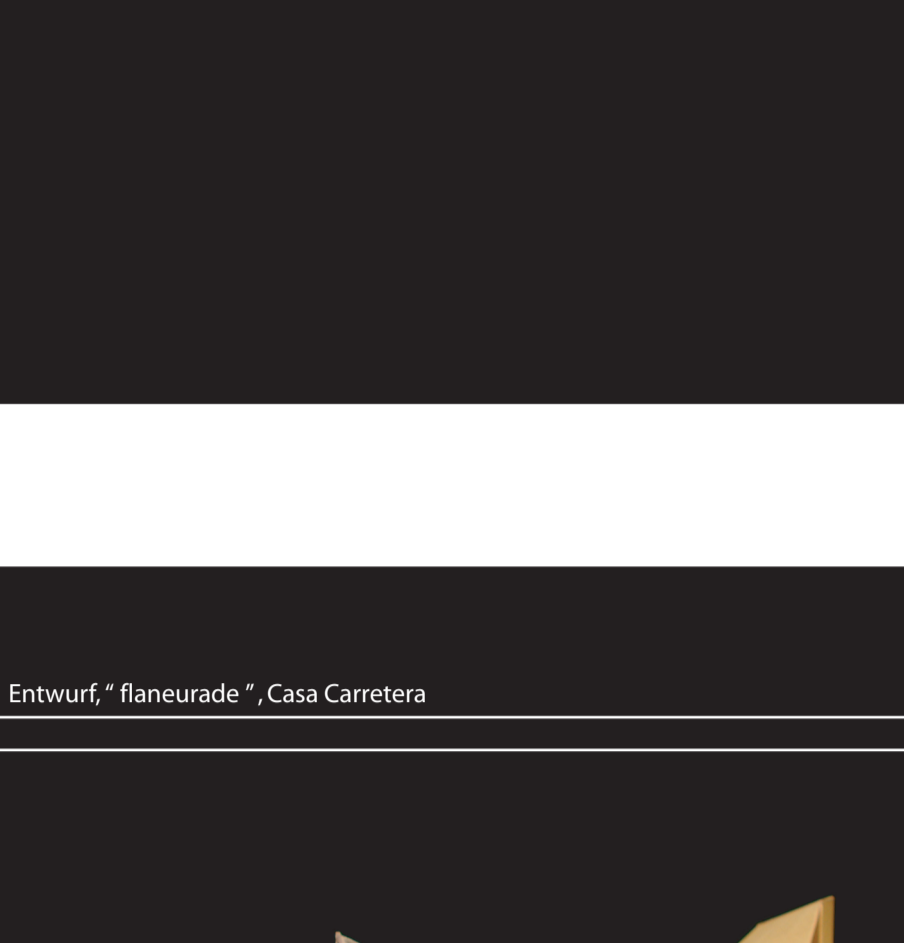
drawing: groundfloor



drawing: first floor

In the first floor is situated on the one hand the restaurants, the kitchen for the drive in, and on the other hand there are two bedrooms for the daughters, two bathrooms and two roof terraces.

The red areas are privat, the orange areas are hybrid and the yellow ones are public spaces.



use diagram: ground floor



use diagram: first floor

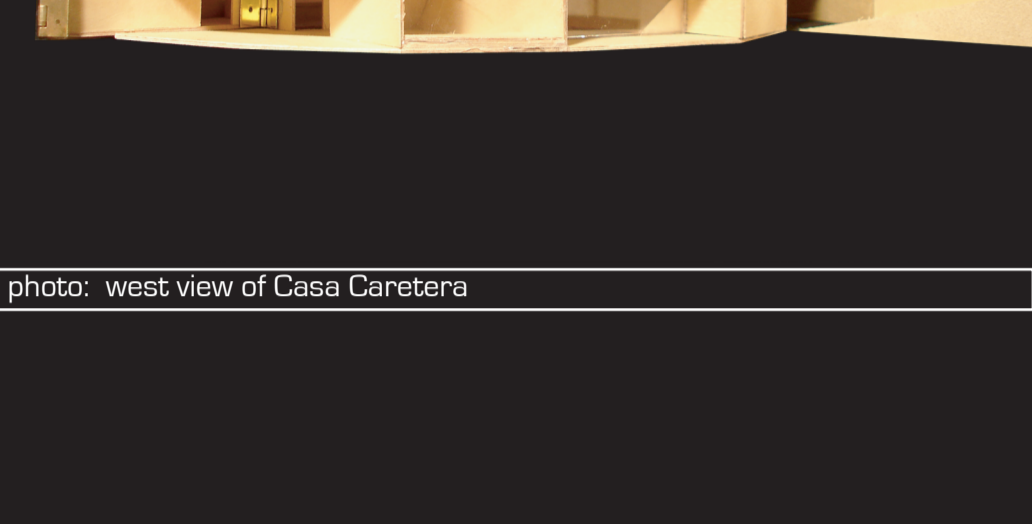


photo: west view of Casa Carretera

Casa Carretera is next to a highway, so there is much noise pollution. To solve this problem we create two courtyards, a public and a privat one. Although the highway is in the south of the house, there is a lot of light. Besides the living room and bedroom of the parents are aligned to the west, so they can enjoy the sunset.

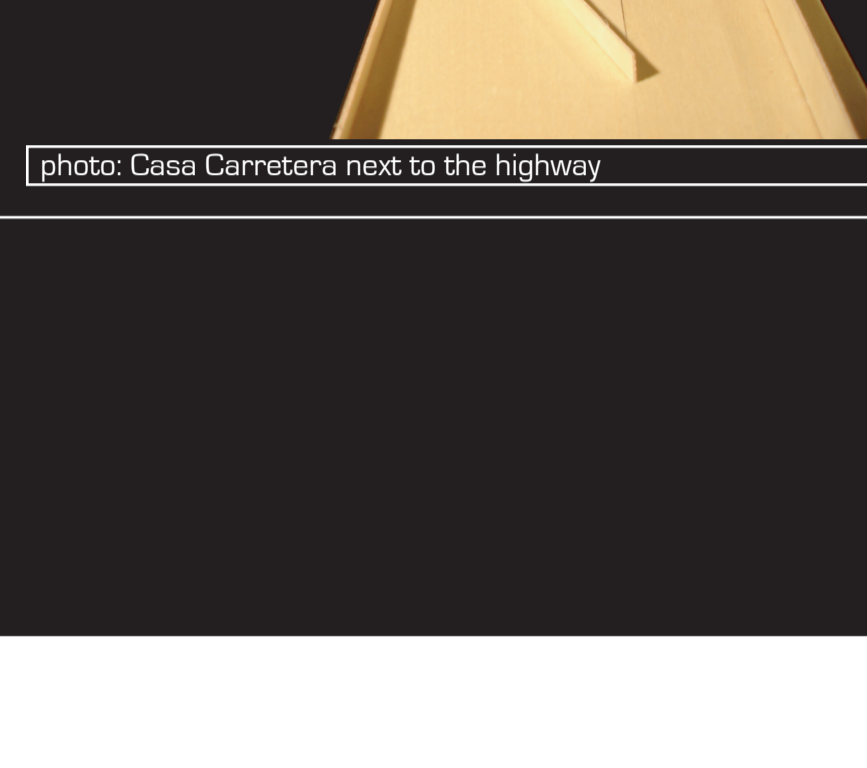


photo: Casa Carretera next to the highway

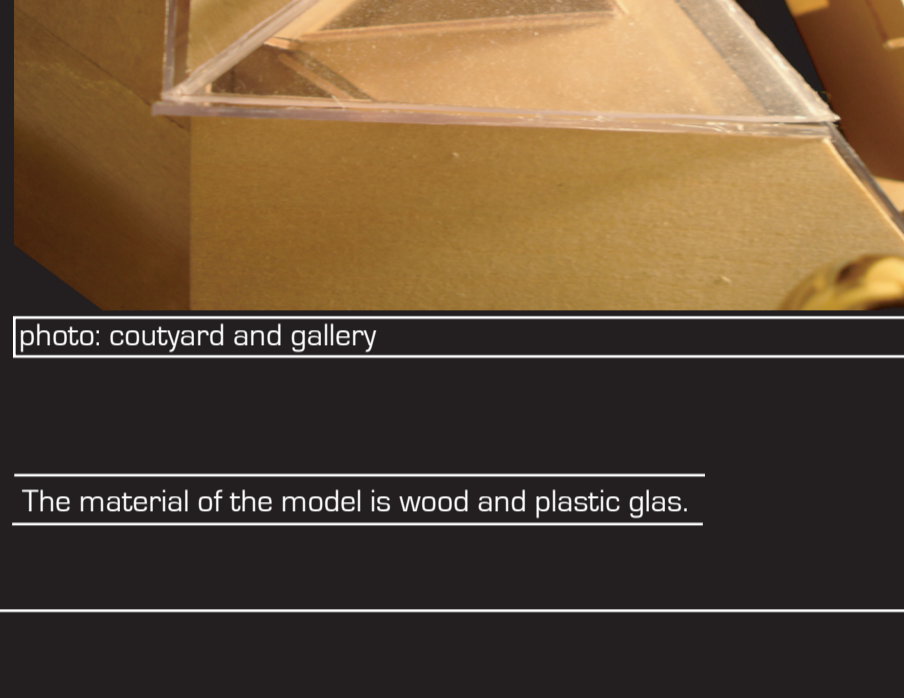


photo: courtyard and gallery

The material of the model is wood and plastic glas.

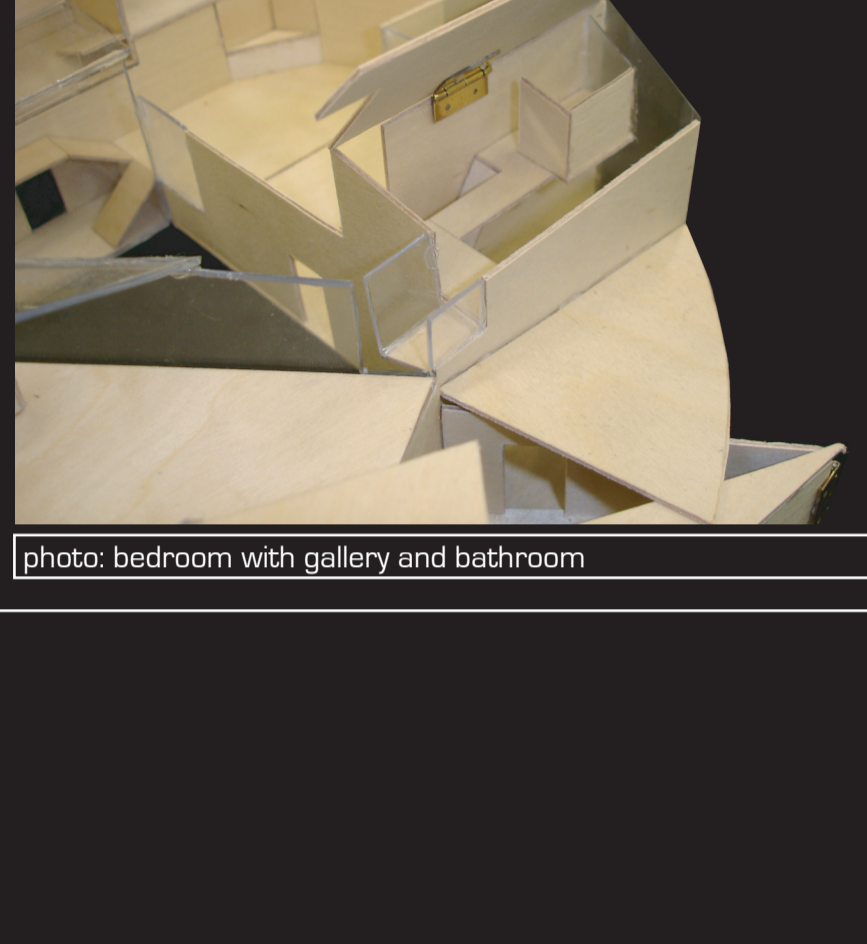


photo: bedroom with gallery and bathroom

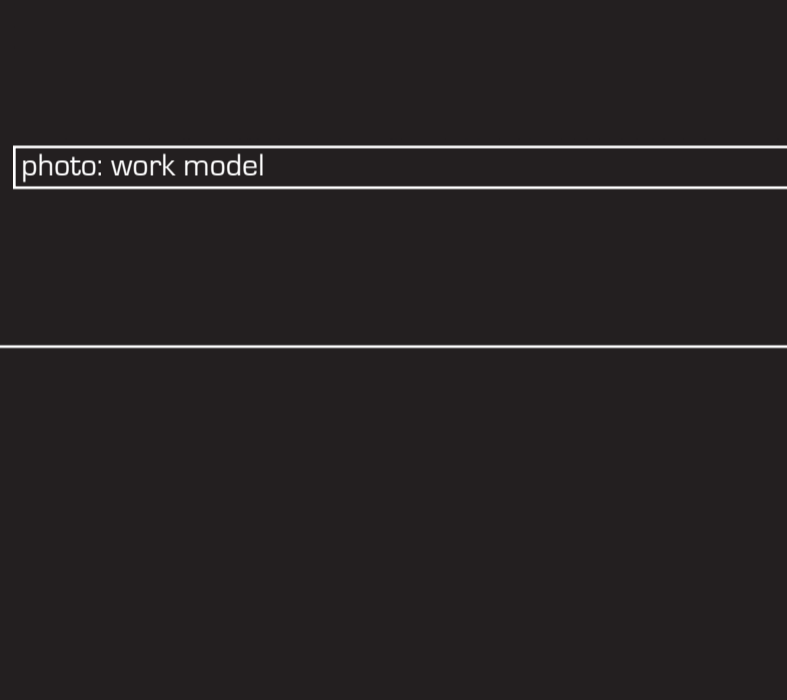


photo: work model

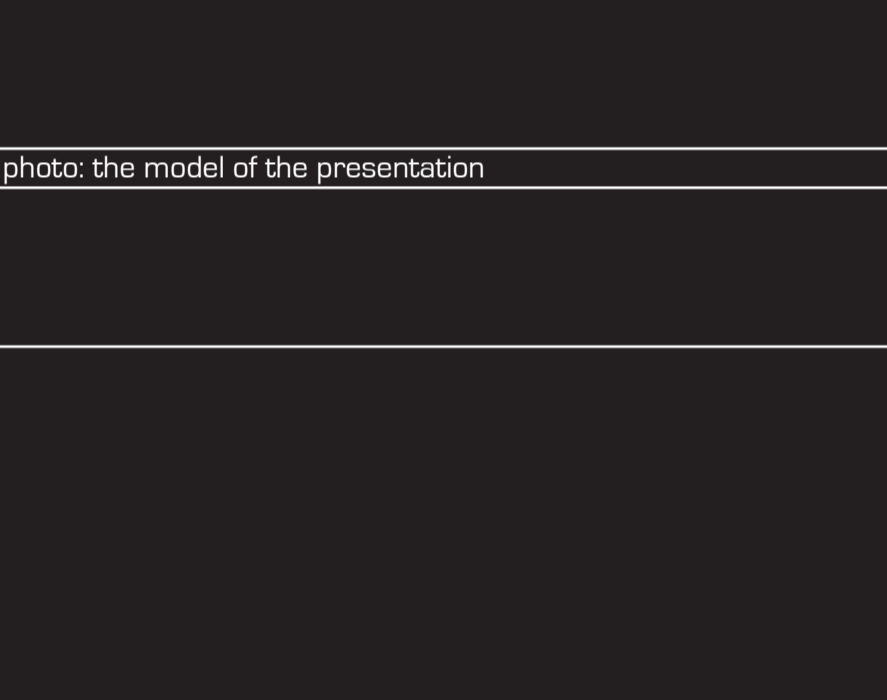


photo: the model of the presentation

Binz is a quarter of Zurich and is situated in the south west of the city. Binz is built on a filled up pit, where loam was mined. In this area we could choose between three building sites, to create a library of about thousand square meters.

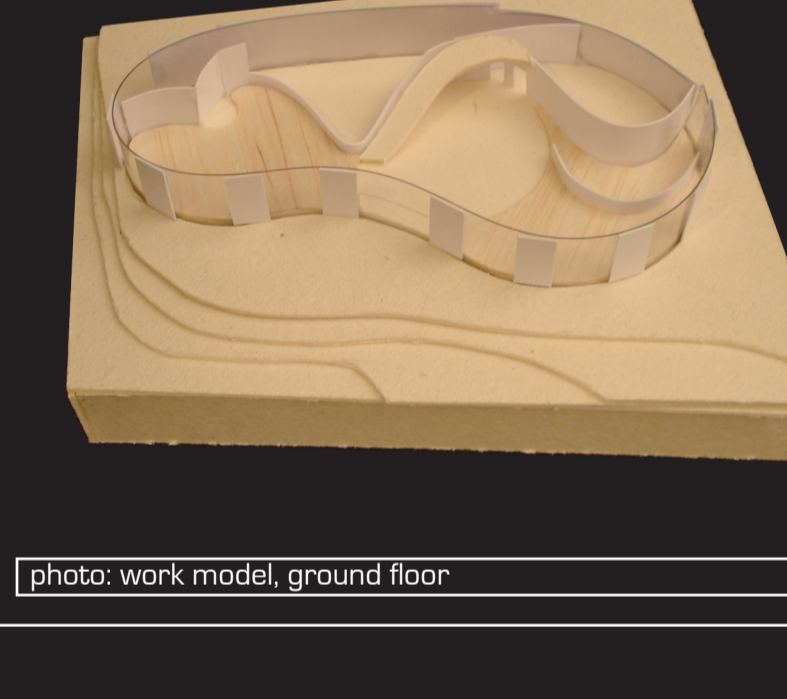


photo: work model, ground floor

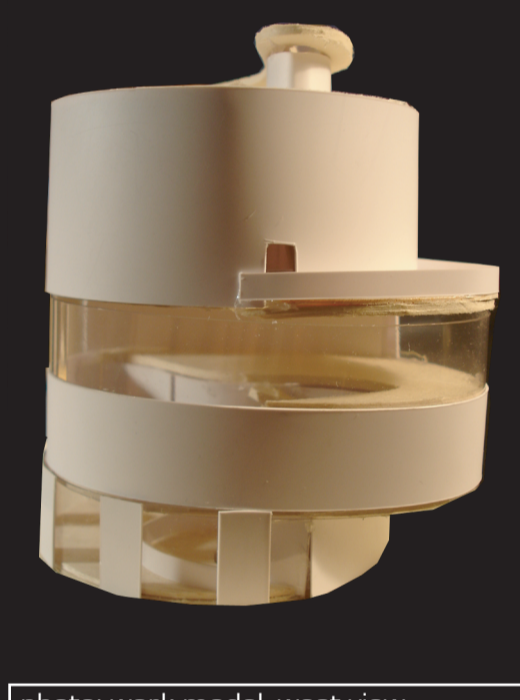


photo: work model, west view

The program includes a hall of 400 m² with workplaces and bookshelves, a secretary's office of 25 m², 25 m² for copiers, a café with 150 m², a hall for readings of 100 m², a lounge with about 50 m², toilets and wardrobe with 50 m² and a station with a shop of about 100 m².

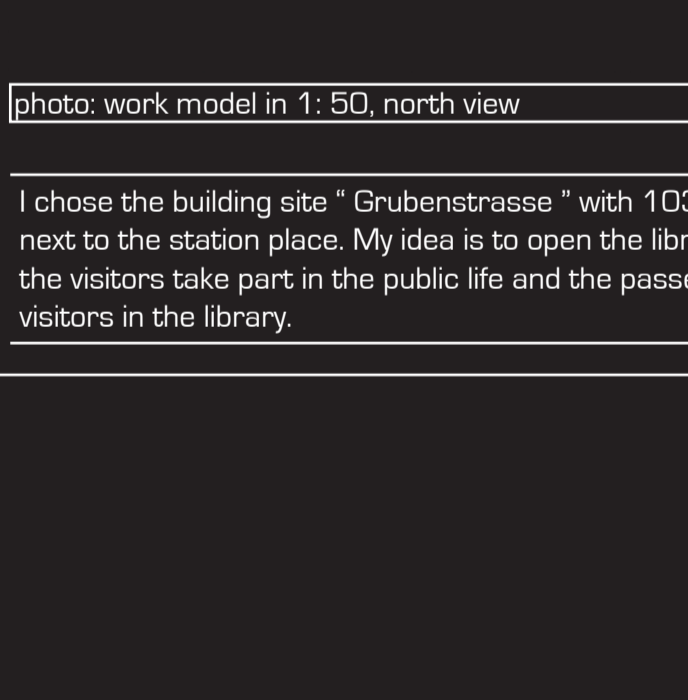


photo: work model in 1:50, north view

For this reason I took the concave form to the place, so it looks like as if the place run into the library. To the place there is an open character and to the south the building is nearly closed.

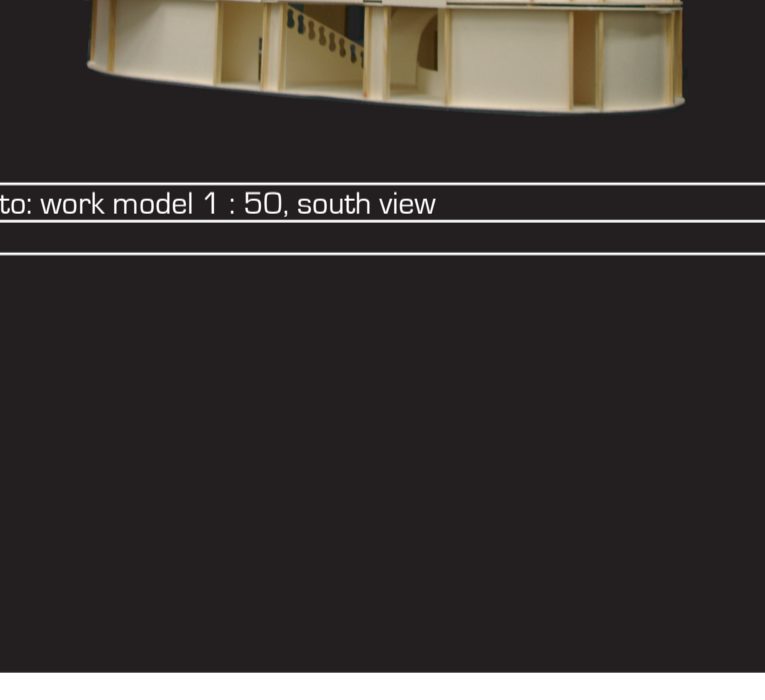


photo: work model 1:50, south view

I chose the building site "Grubenstrasse" with 1035 m², which is located next to the station place. My idea is to open the library to this place, that the visitors take part in the public life and the passer-bies should see the visitors in the library.

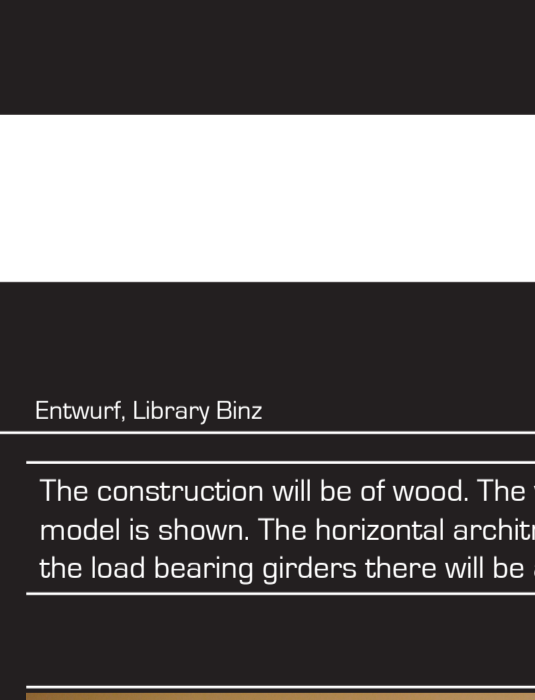


photo: the balcony is closed with wood boards

In the ground floor there is the café, the office and public toilets. In the first floor you can find the hall for readings, in the third floor is located the library hall with bookshelves and in the fourth floor there are working places, which are shield from the noise of the gallery.

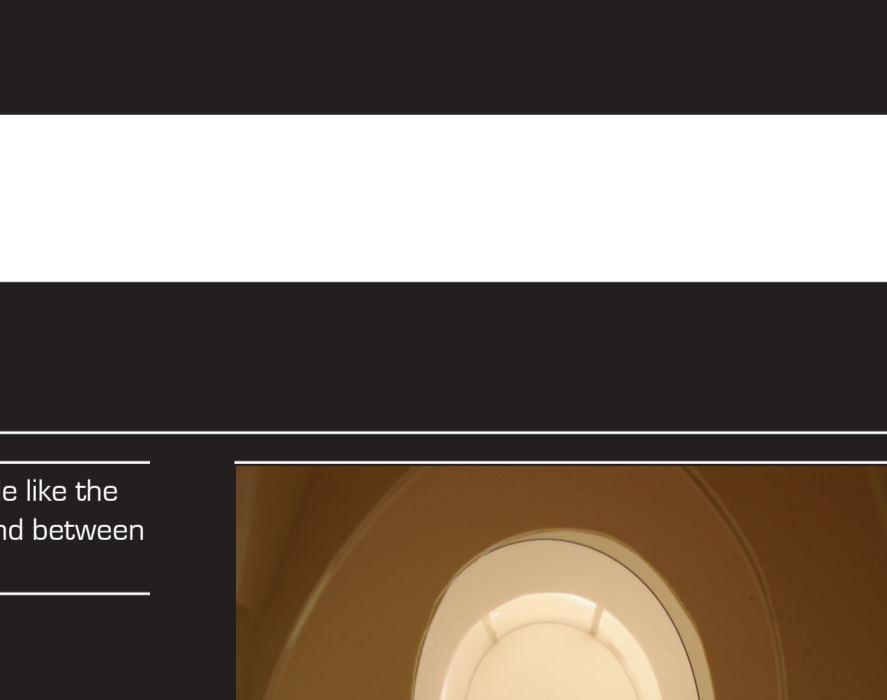


photo: the large window opens the library to the place

The construction will be of wood. The vertical girder are visible from the outside like the model is shown. The horizontal architraves are also visible from the inside, and between the load bearing girders there will be a ceiling of wood.

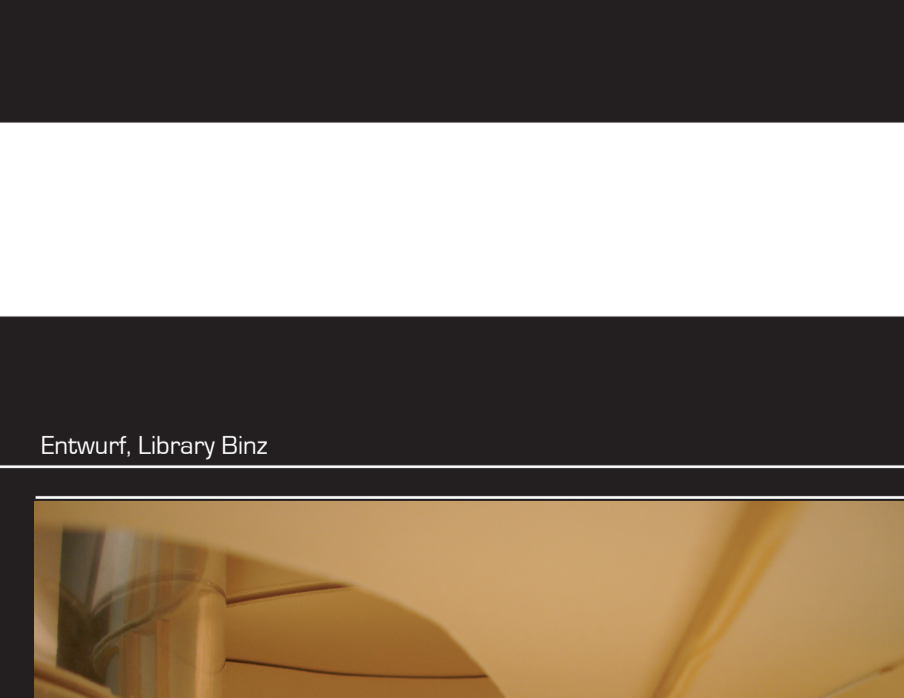


photo: third floor, opening for stairs to the fourth floor

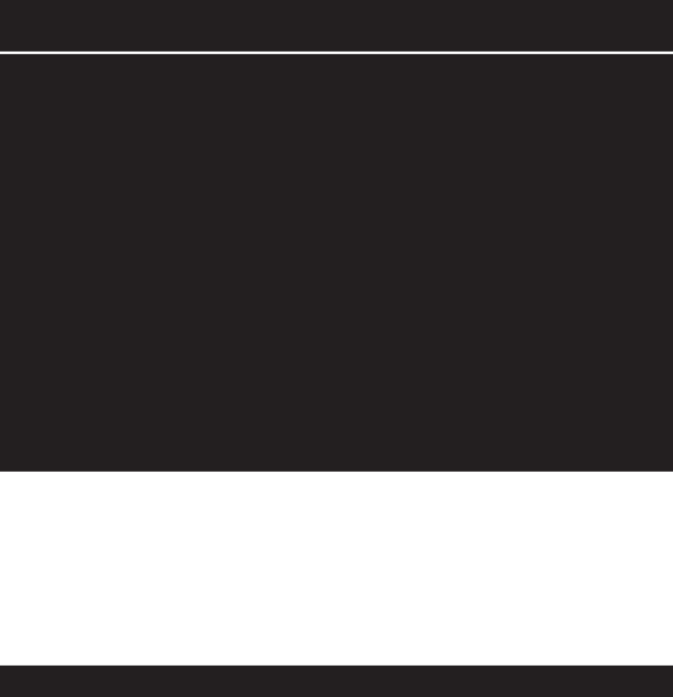


photo: view from groundfloor up to the gallery

The panelling of the walls inside will be of vertical wood boards.

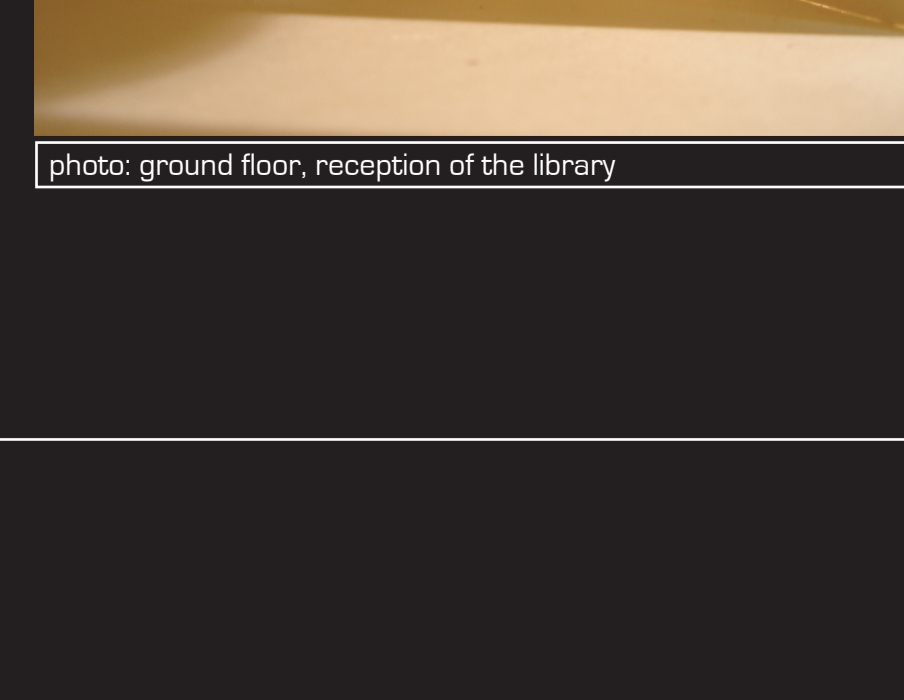


photo: ground floor, reception of the library



photo: arch for holding the wood girder

The plans and the model of this project are still under construction.