

photo: west view of Casa Carretera

---

Casa Carretera is next to a highway, so there is much noise pollution. To solve this problem we create two courtyards, a public and a private one. Although the highway is in the south of the house, there is a lot of light. Besides the living room and bedroom of the parents are aligned to the west, so they can enjoy the sunset.

---

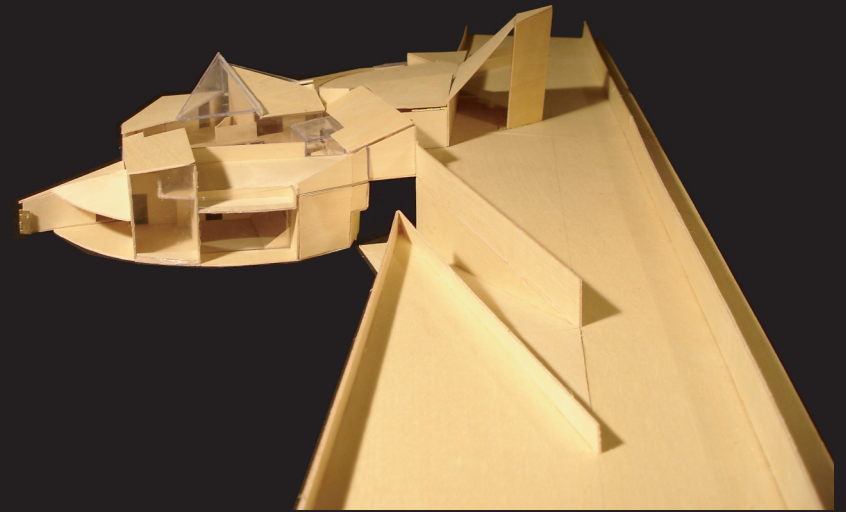


photo: Casa Carretera next to the highway