

portfolio

2. semester

chair of architecture and design

project: light exposure

corinne lopez

light exposure

The project is created for a successful still life photographer / video artist, called Patricia, who is working and living in this building. She is 38 years old and lives with her husband and 6 years old child.

Occasionally, depending on the project, her assistant stays at the studio for up to two weeks at a time. The subject of her photography is a recurring theme of 24 hours. She uses her local environment to create 24 hours recorded sequences. That is why there are a series of cameras located in the house. The final artworks range between film recordings and assorted sizes of prints or a combination of compositions, which are exhibited for private and sometimes for public use in different zones of the building.

The house sits between two already existing buildings. This position effects that the amount of sunlight is rare. Due to her passion to Photography, we designed a building, which can be read as a camera. We applied the elements like view finder, shutter and lense to the house. We translated the different zones in the enclosure of a camera, like dark and lighter space and the enclosure construction itself, which allows or prevents light coming in to our building. That means that the lense and the view finder are the main parts where natural light can come in, whereas the middle part lives of artificial light and stands for lense aperture and shutter, which are dark spaces in a camera.

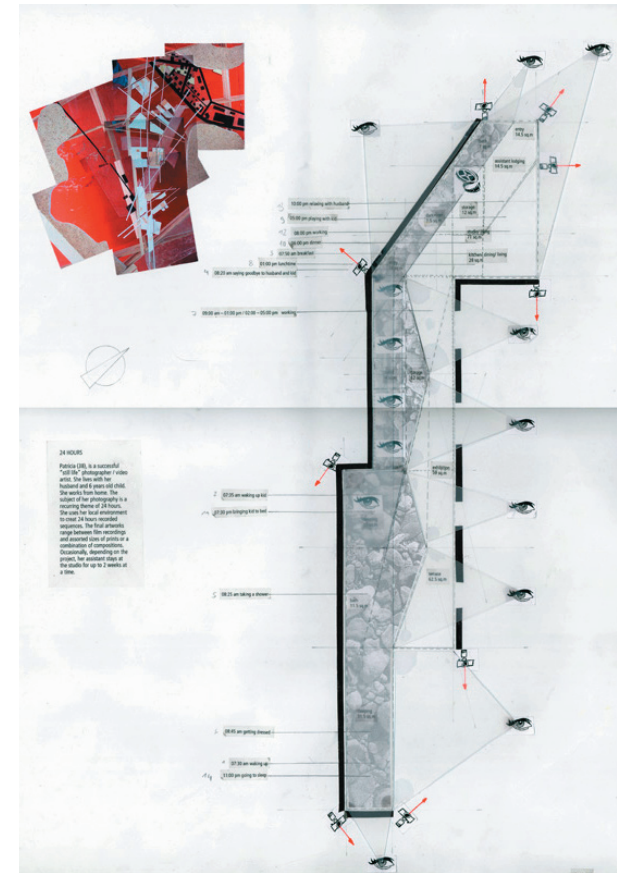
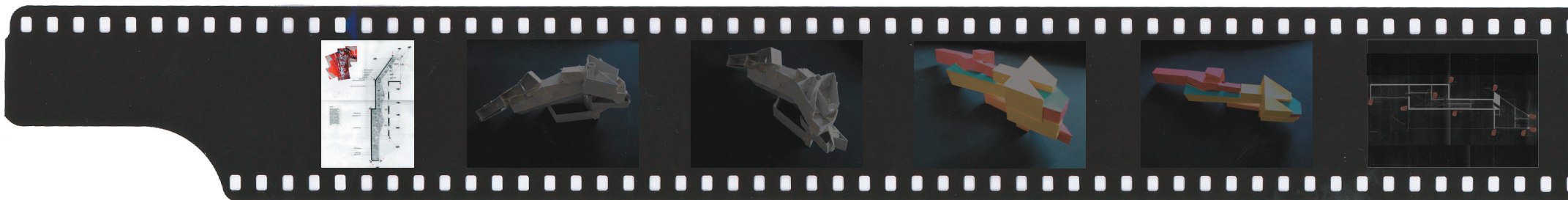
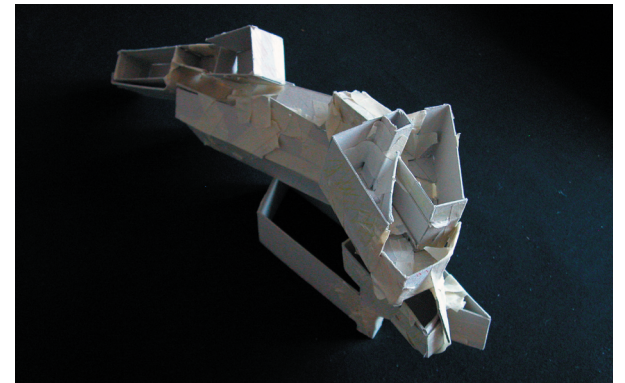
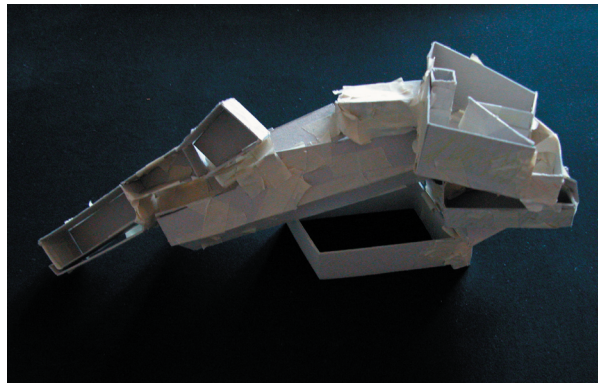
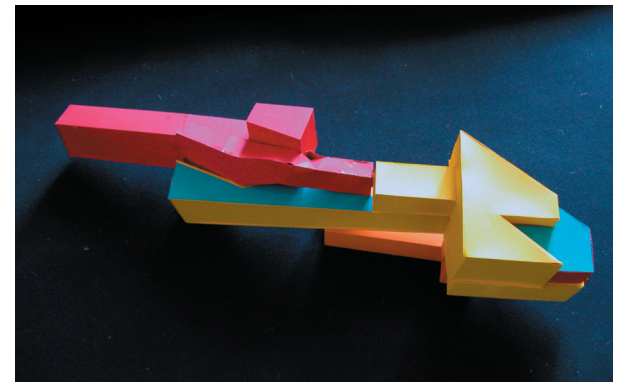
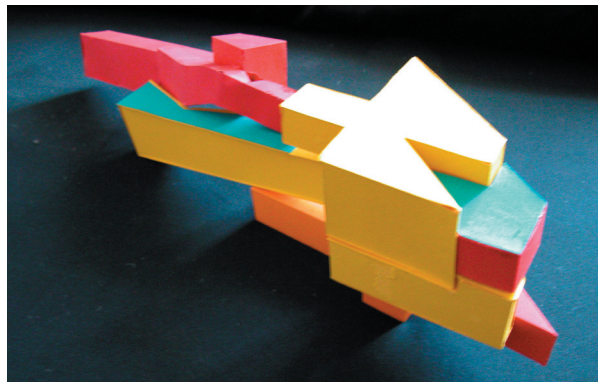


diagram including roomplan, openings and camera positions

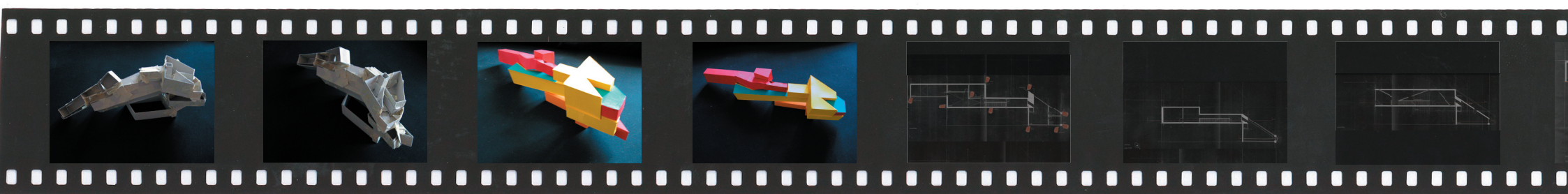


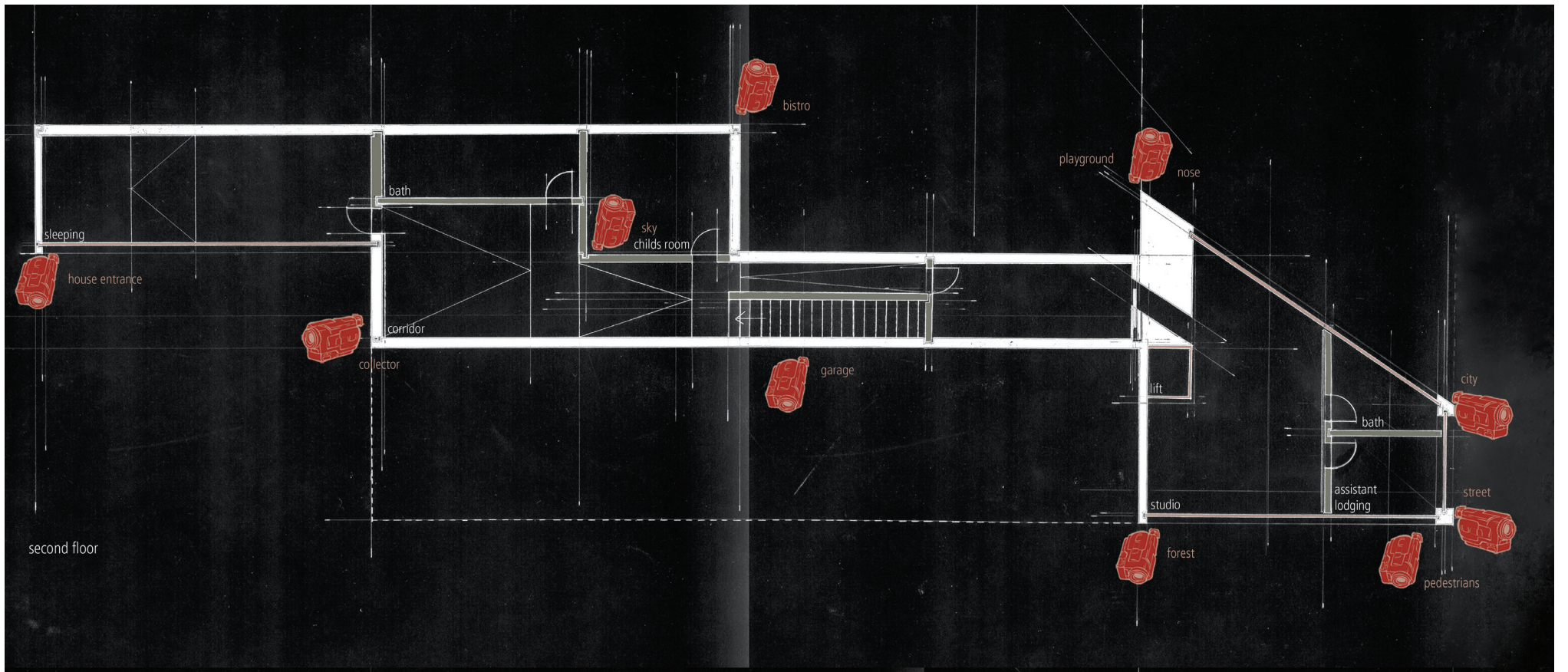


first 3D model

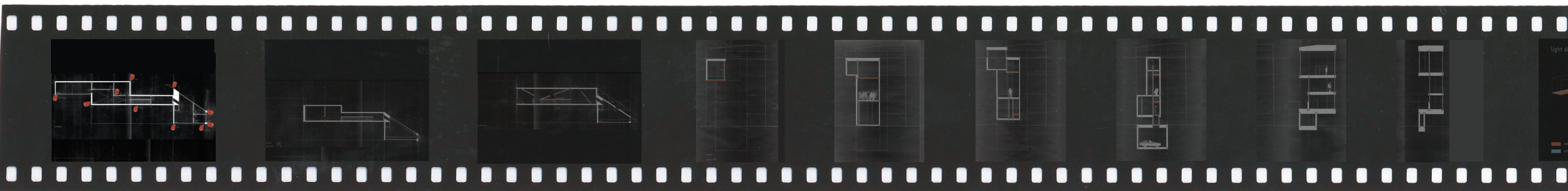


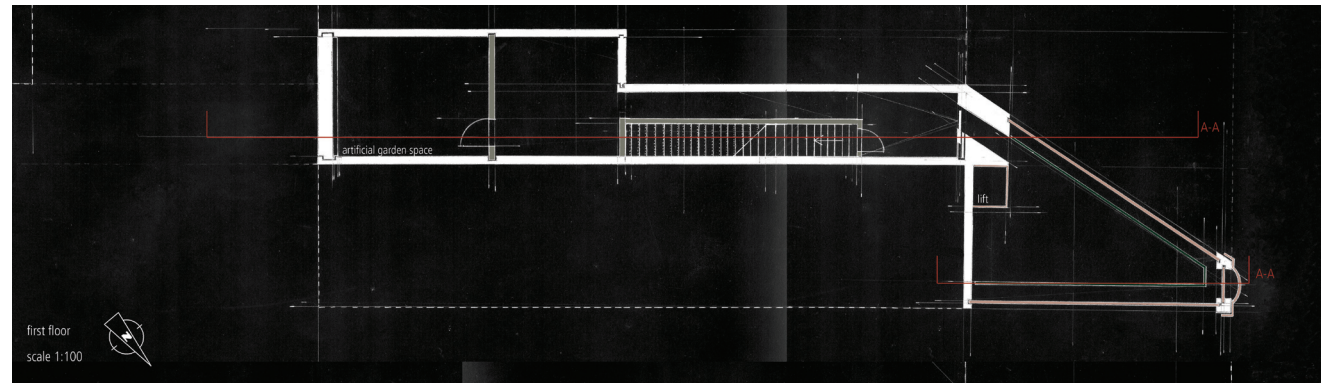
zoning model



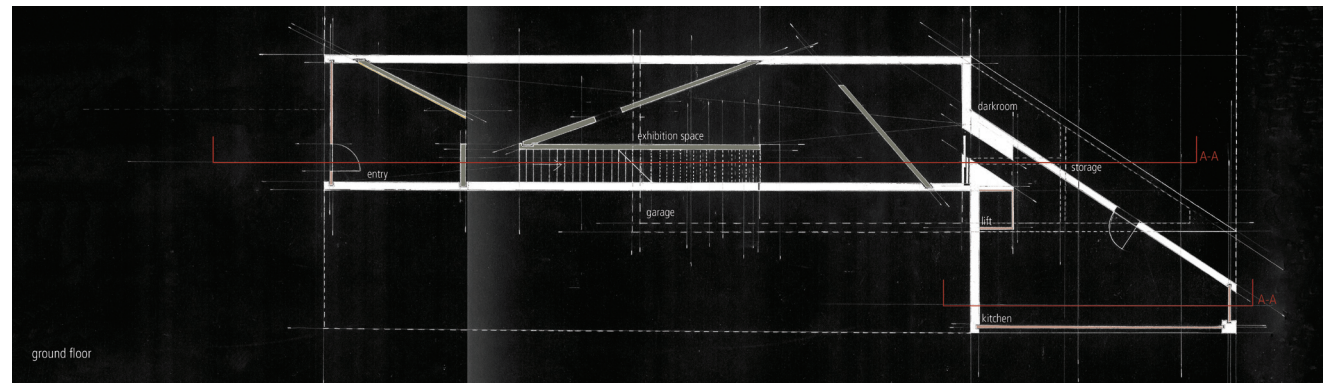


plan second floor with camara positions

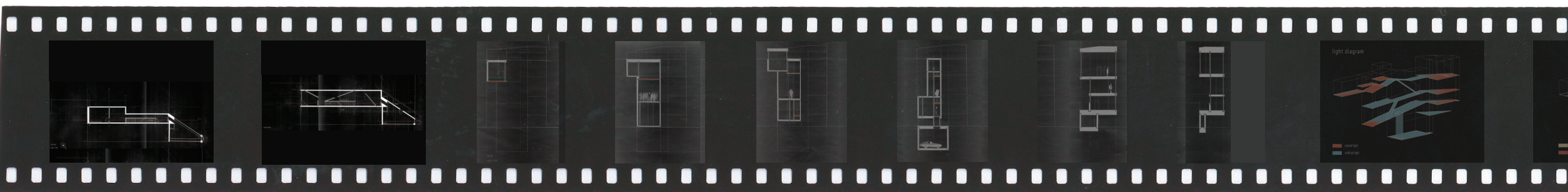


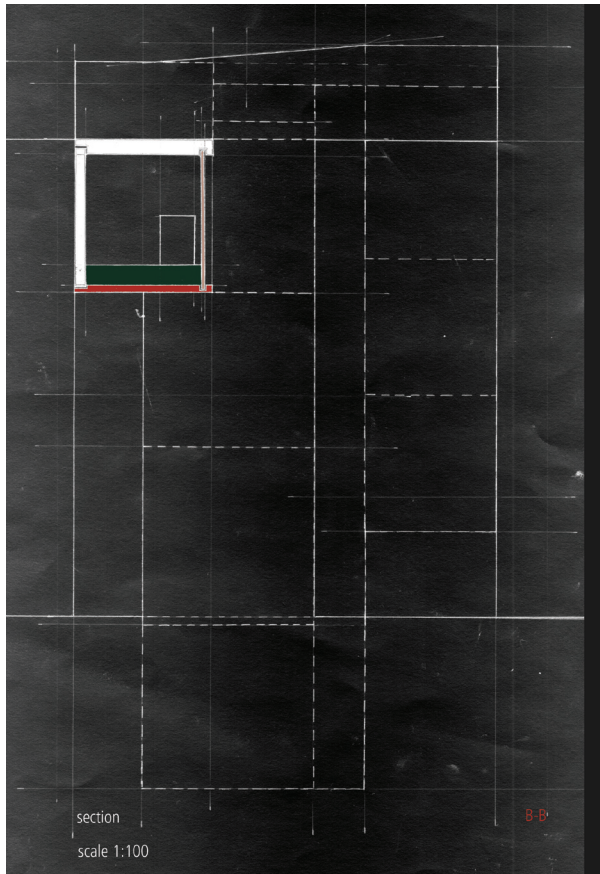


plan first floor

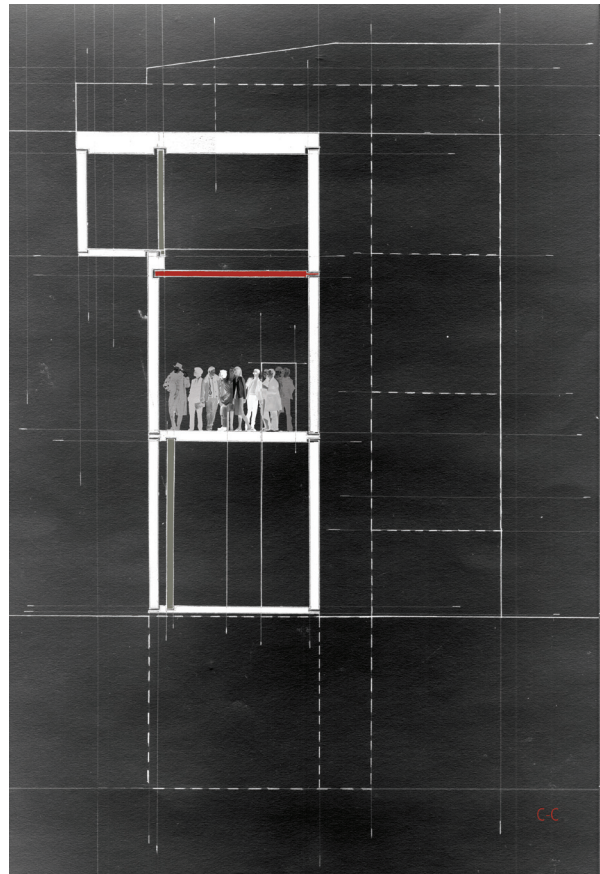


plan ground floor

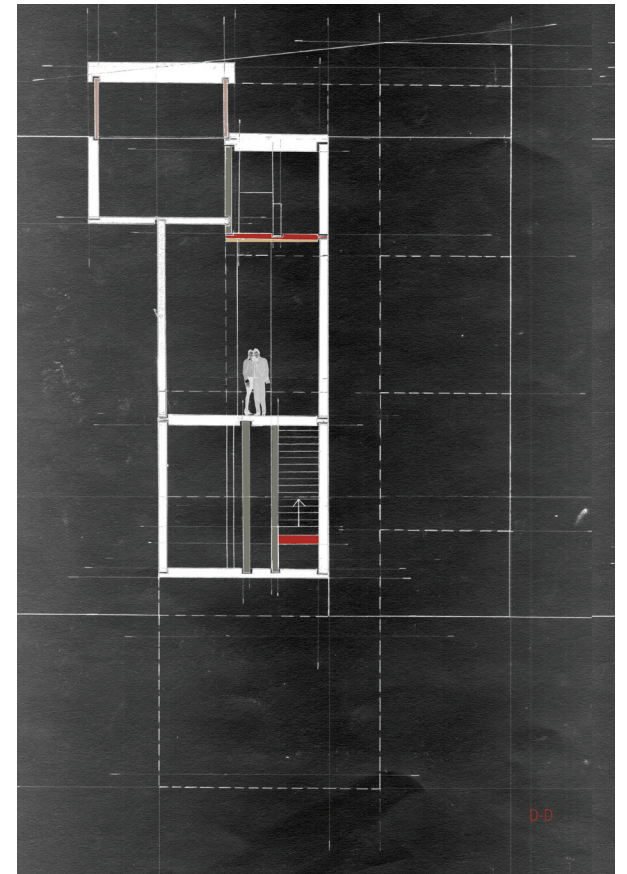




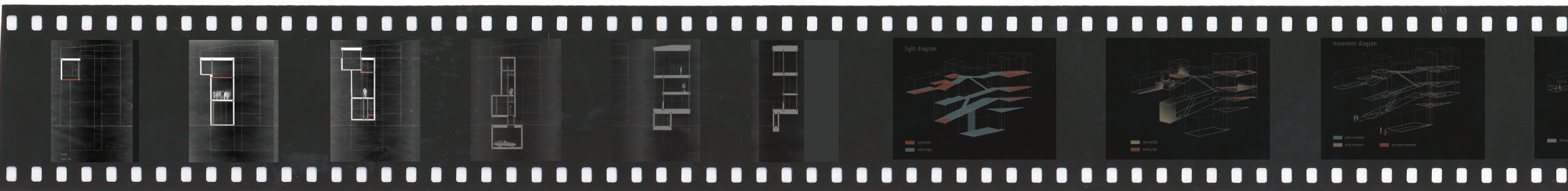
section B-B

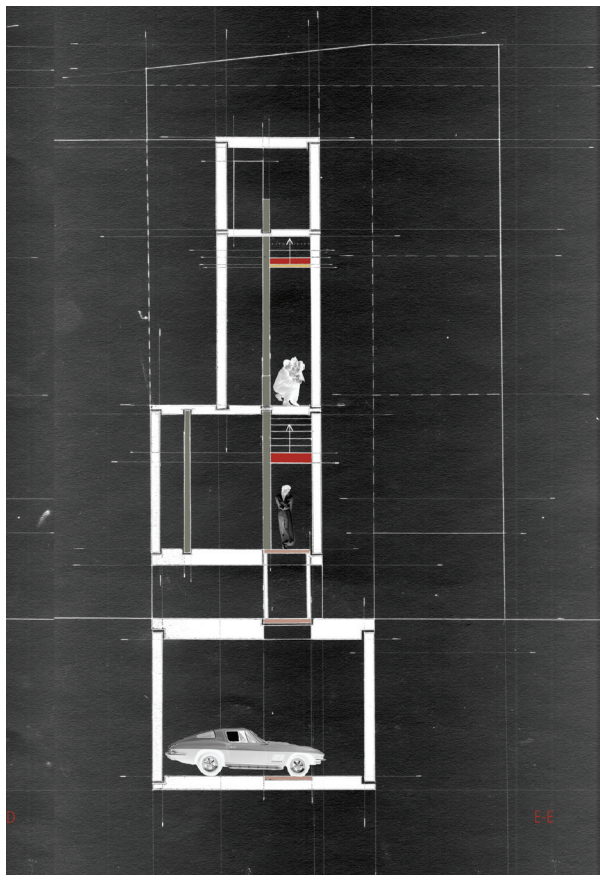


section C-C

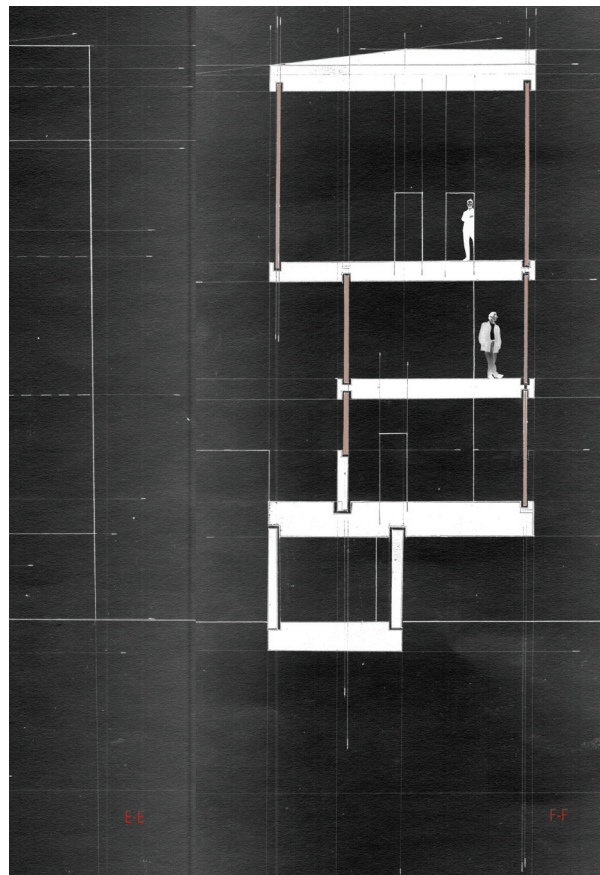


section D-D

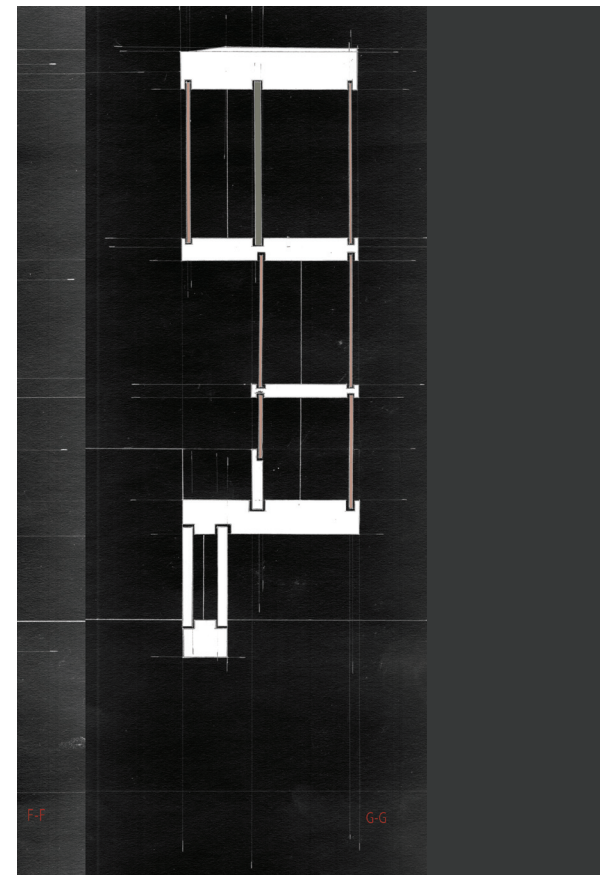




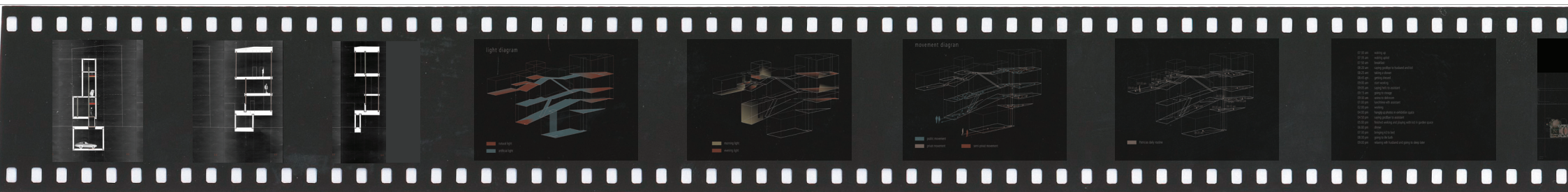
section E-E

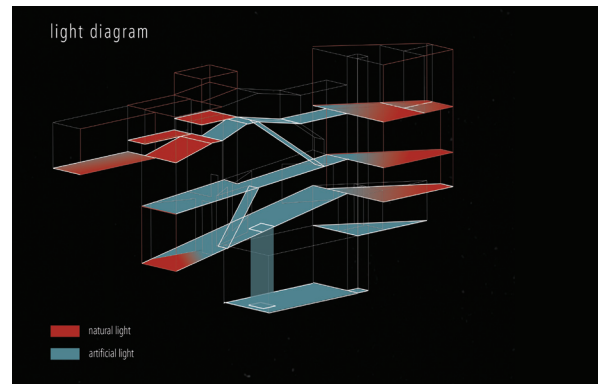


section F-F

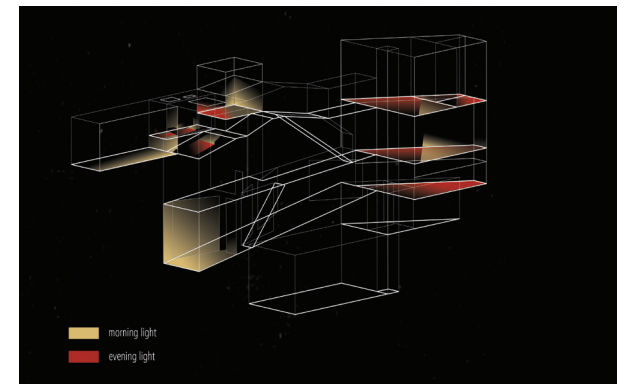


section G-G

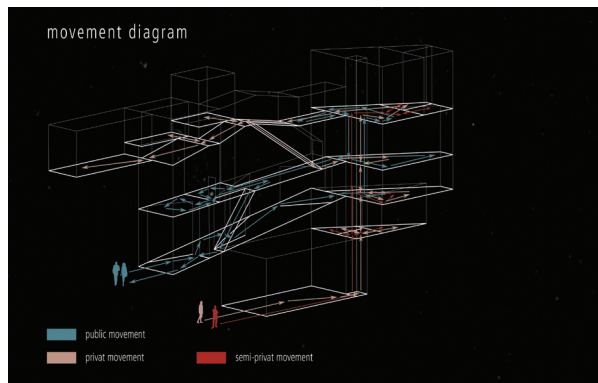




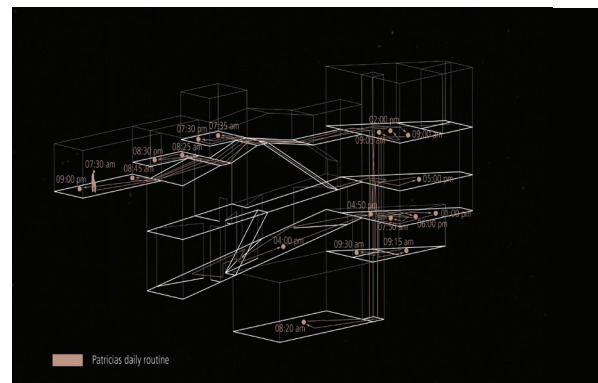
light diagram: natural / artificial light



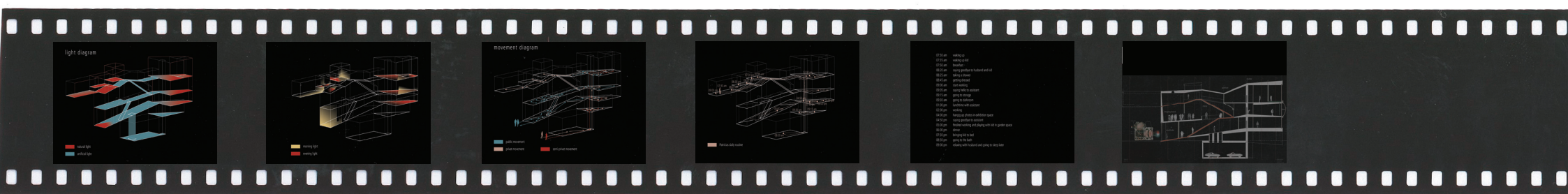
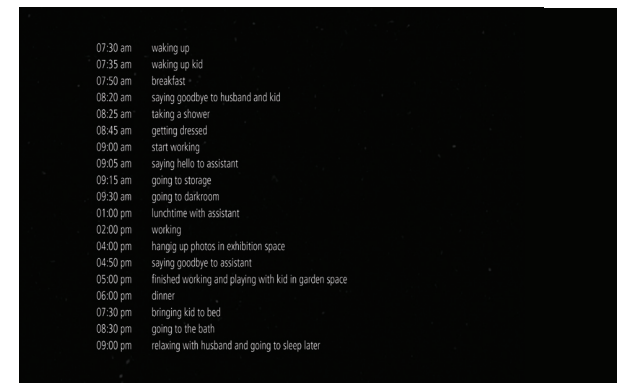
light diagram: morning / evening light

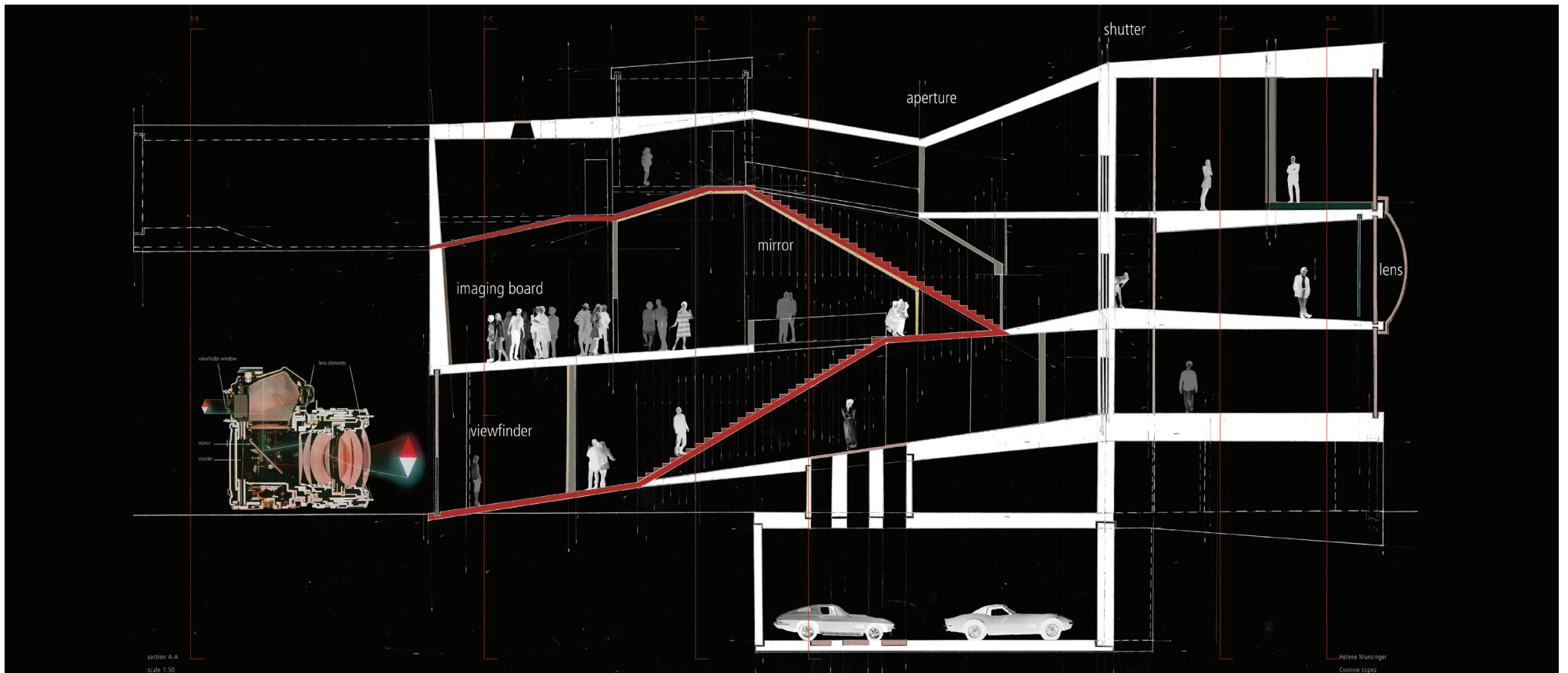


movement diagram: public / private / semi-private



movement diagram: Patricia's daily routine





section A-A

