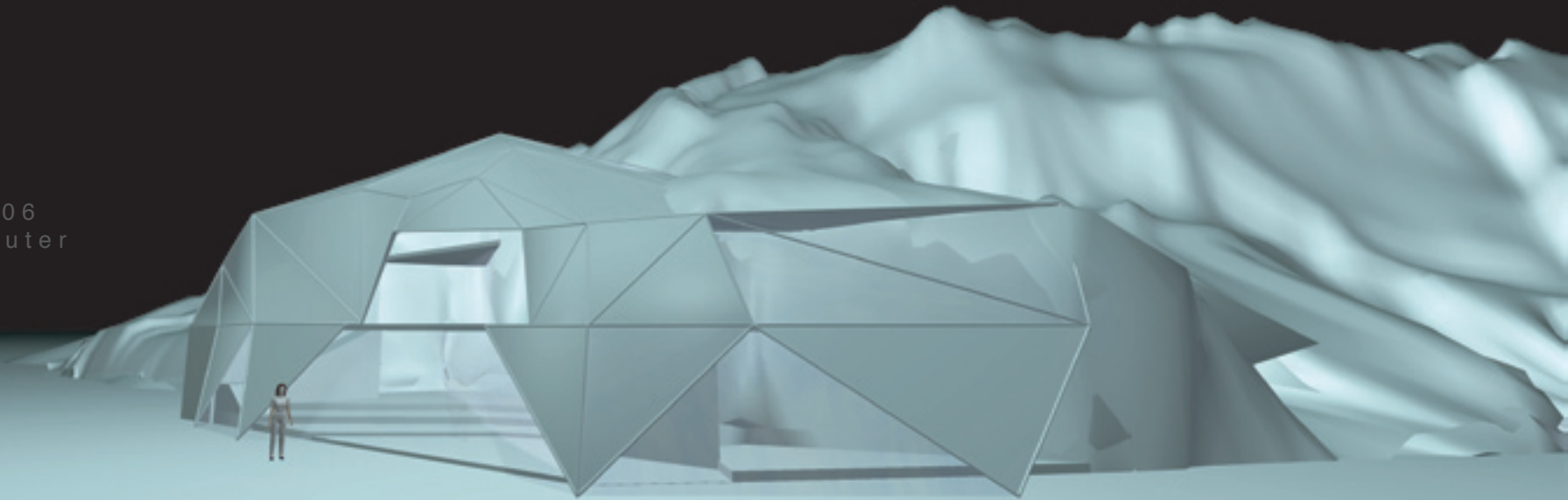


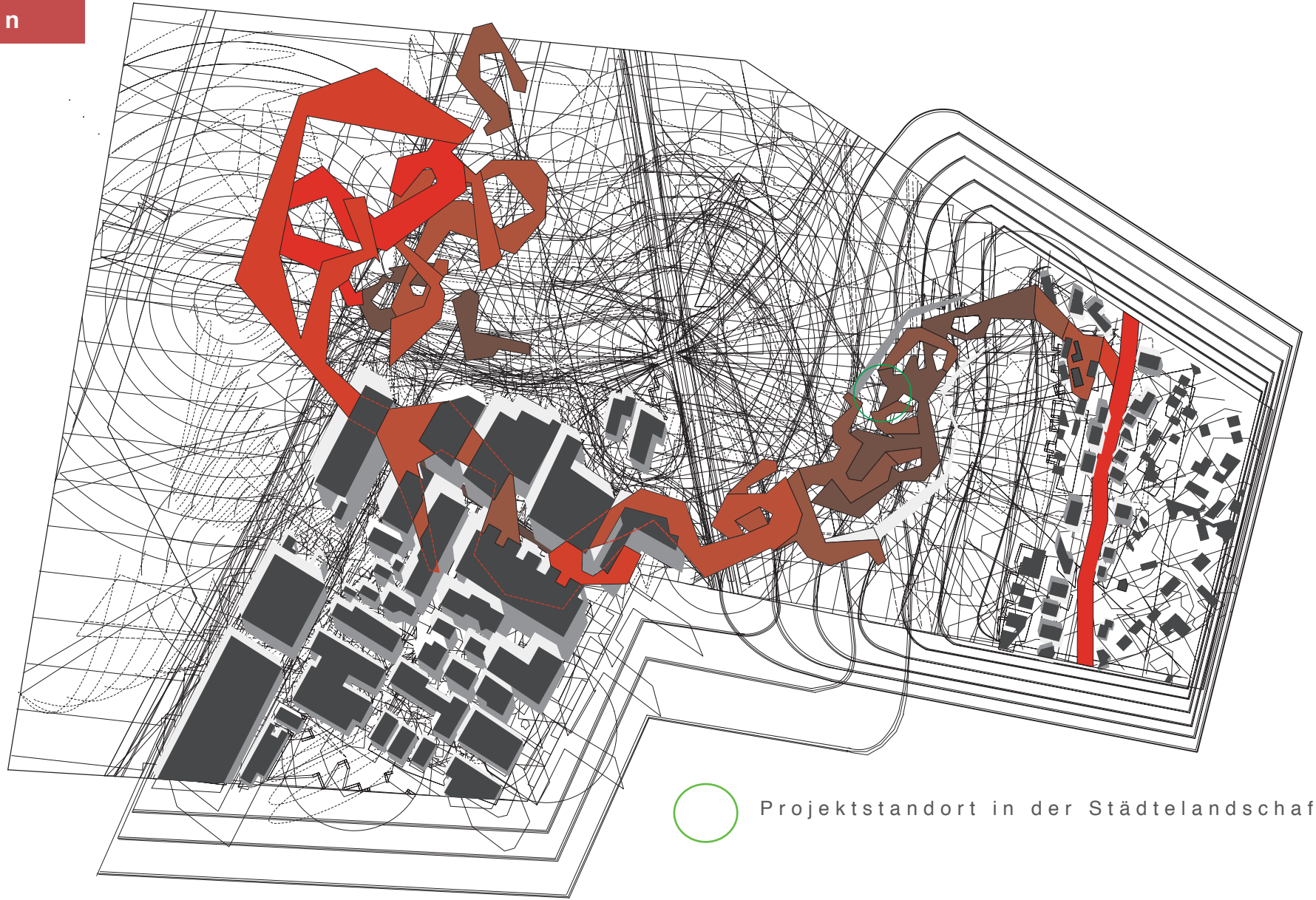
# DIE HÄNGENDEN GÄRTEN

Haus für eine Orchideenliebhaberin

Portfolio  
Entwurf 2. Sem SS06  
Ass.: Christoph Sauter  
Prof.: Marc Angélli

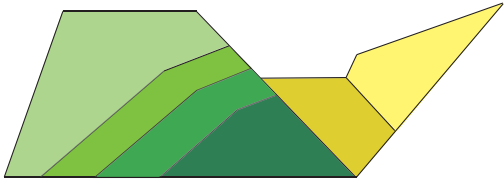


situation

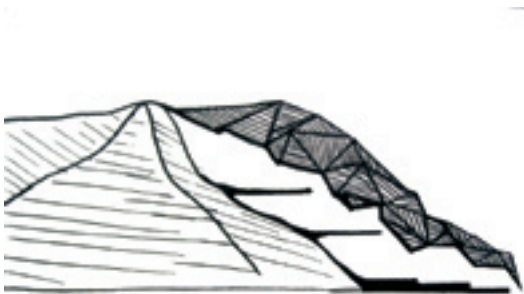


○ Projektstandort in der Städtelandschaft

k o n z e p t



Terrassierung I  
Aufschüttung des Bodens



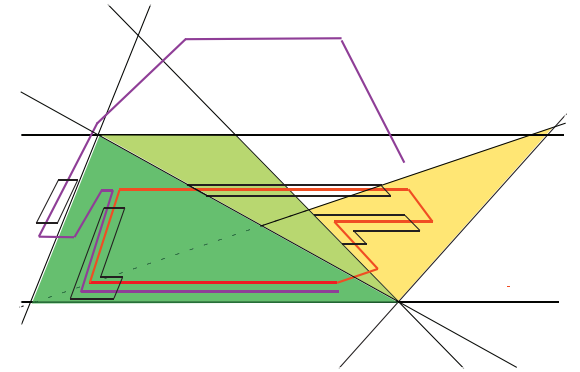
keine vertikalen Elemente



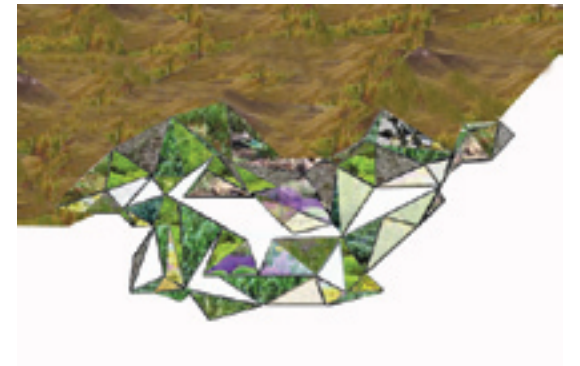
Terrassierung II  
versetzte Ebenen



Begrenzung durch die Natur

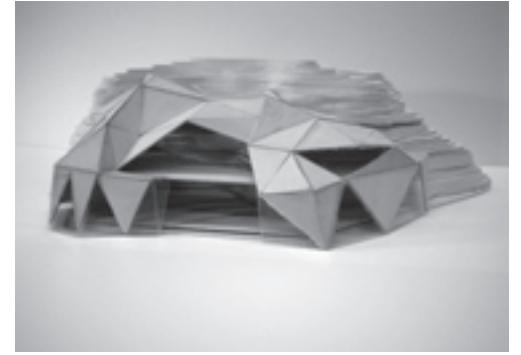
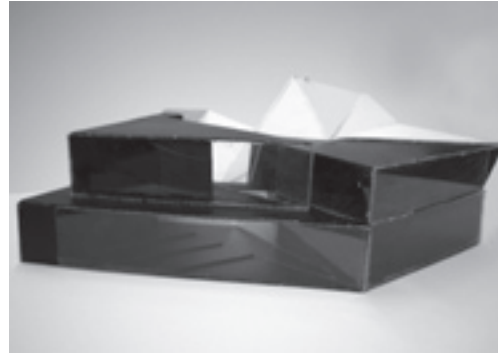
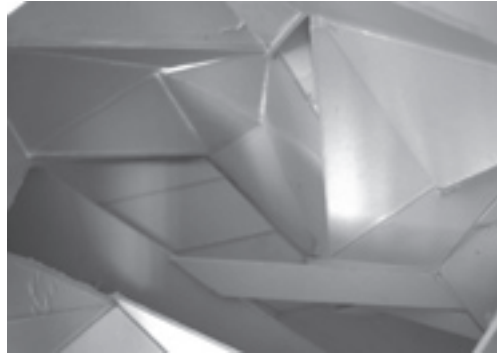


- privater Weg
- öffentlicher Weg
- öffentliche Zone
- halböffentliche Zone
- private Zone

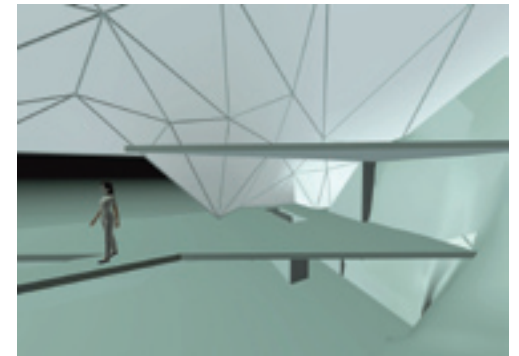
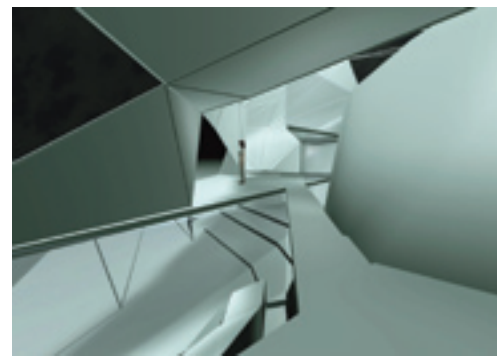
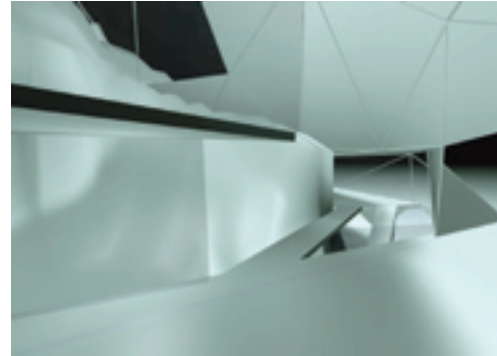
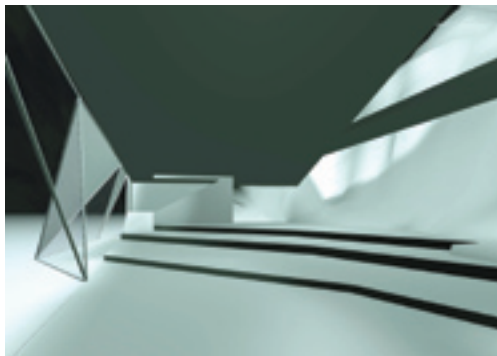


Dächer werden zu Grünflächen

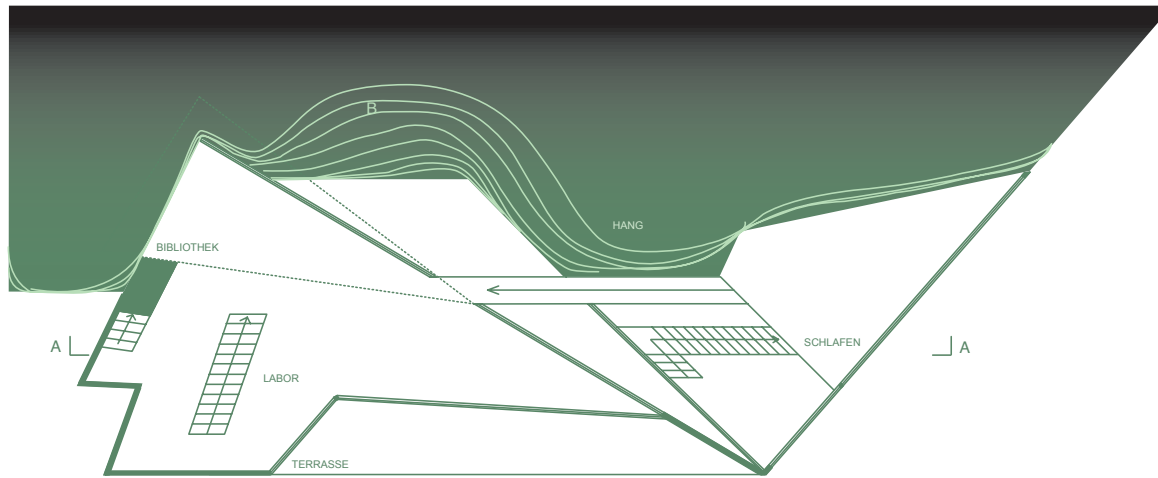
modellfotos



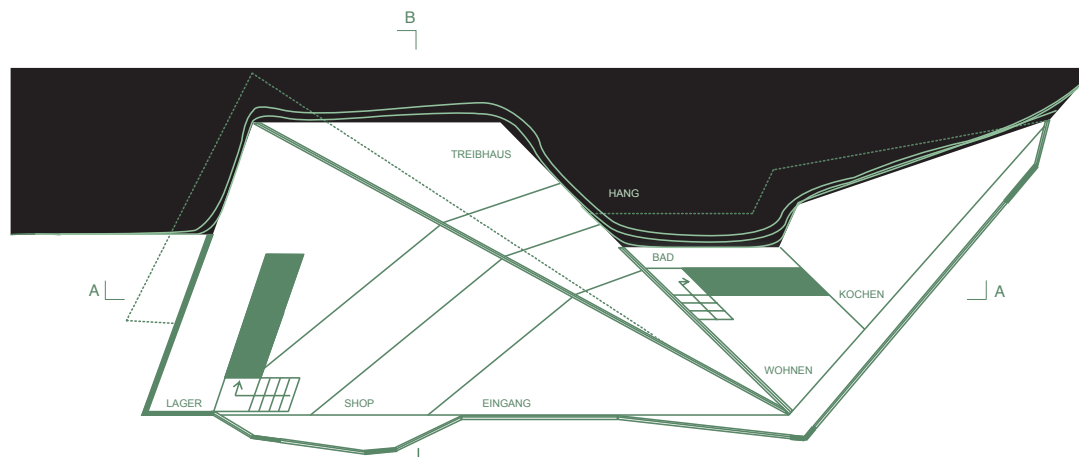
renderings



pläne

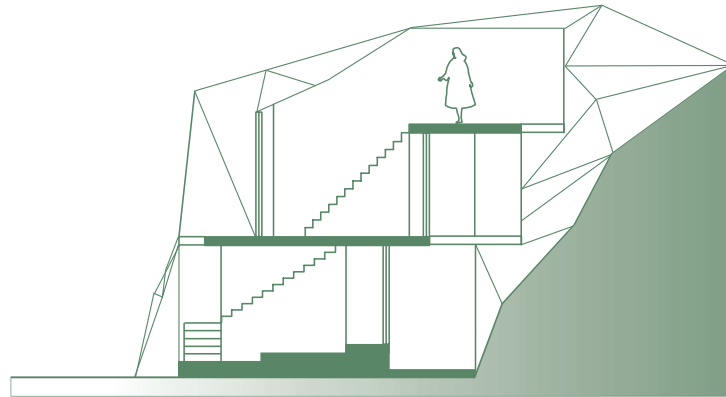


Obergeschoss 1:200

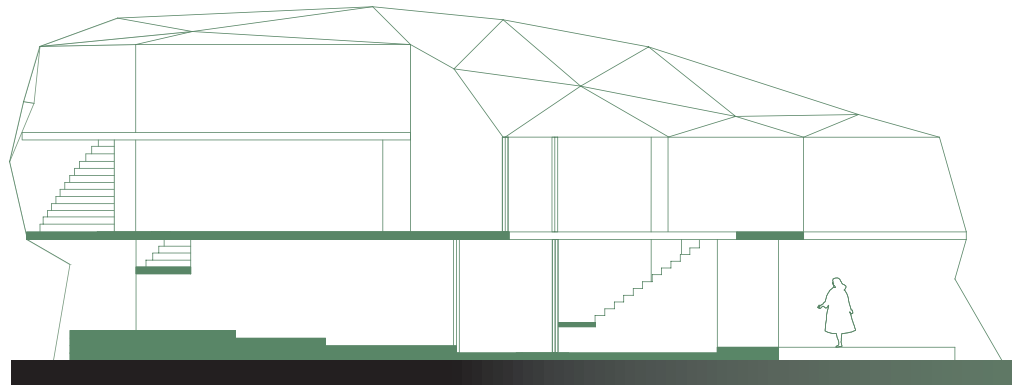


Erdgeschoss 1:200

schnitte



Schnitt B-B 1:200



Schnitt A-A 1:200