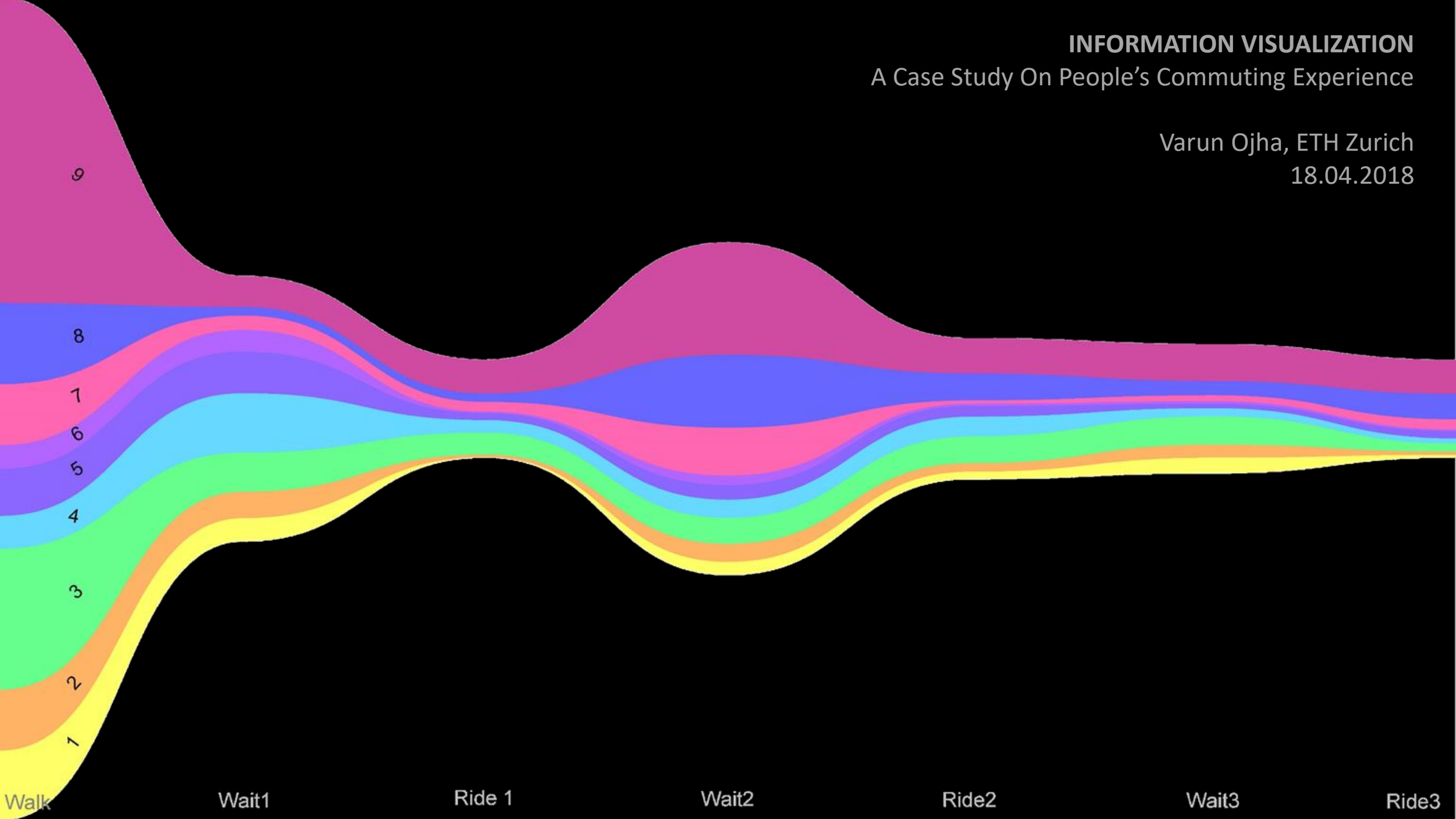
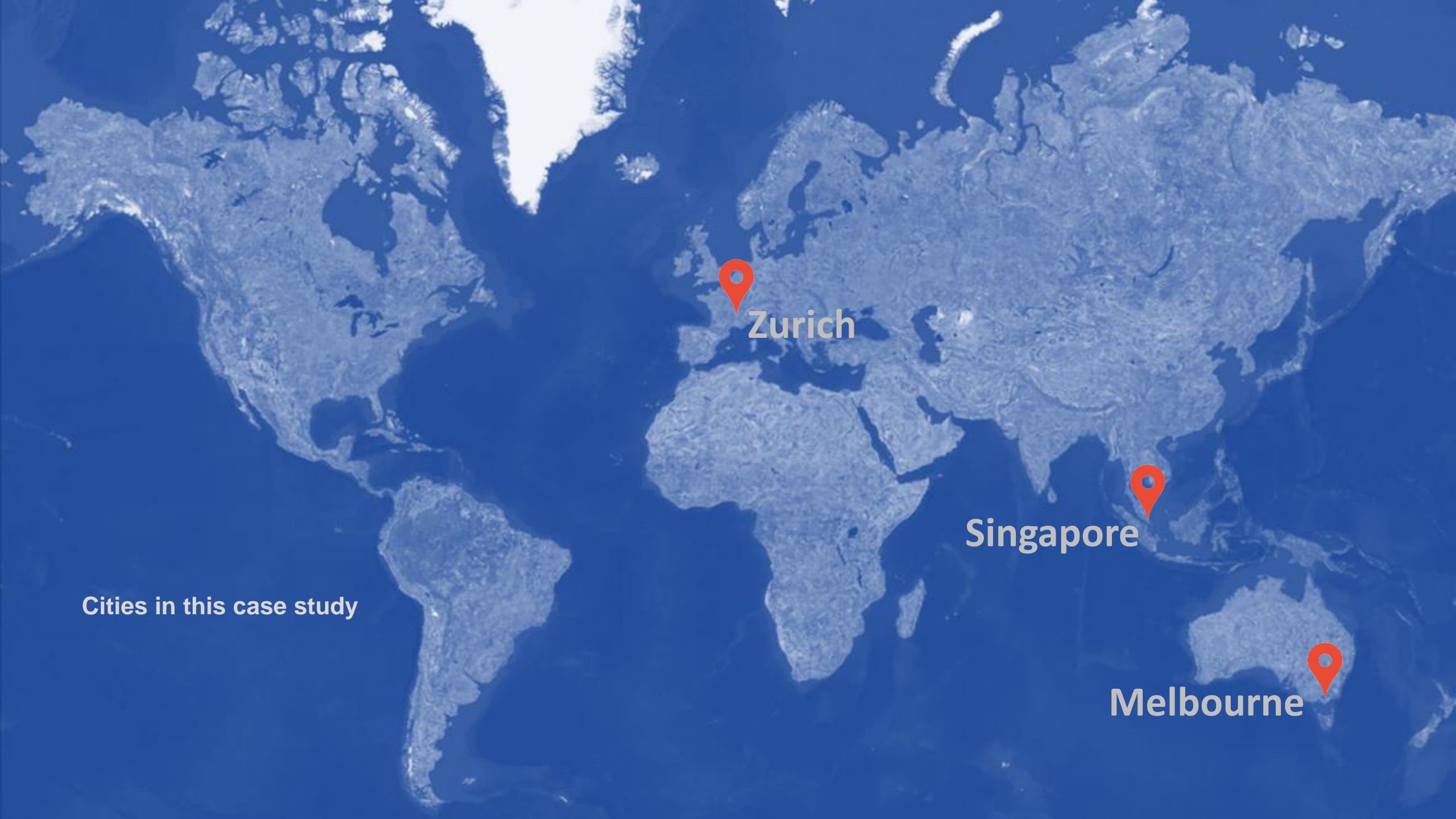


A Case Study On People's Commuting Experience

18.04.2018





Zurich



Singapore



Melbourne

Cities in this case study



ZURICH



Ride



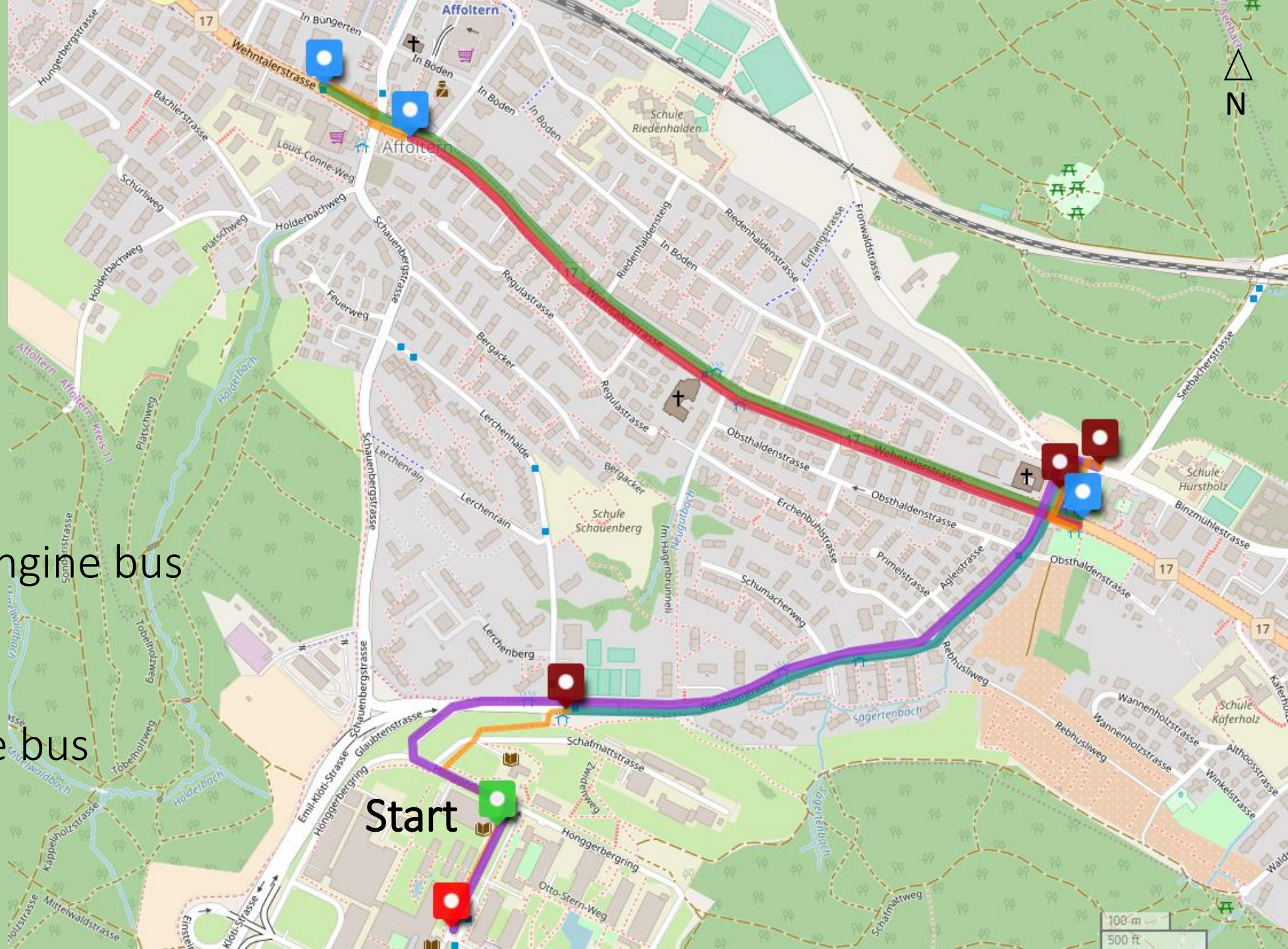
Combustion engine bus



Ride

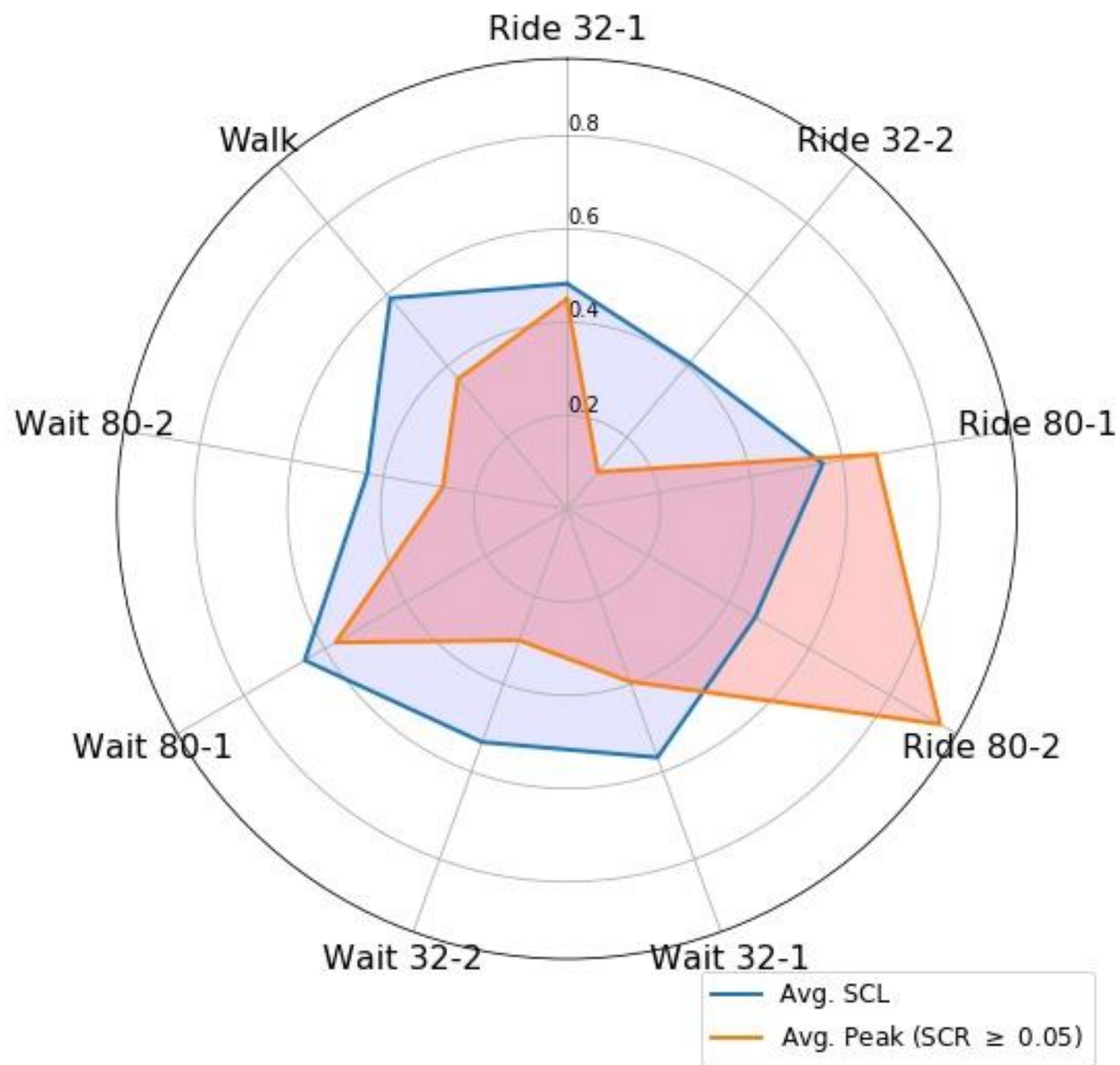


Electric engine bus



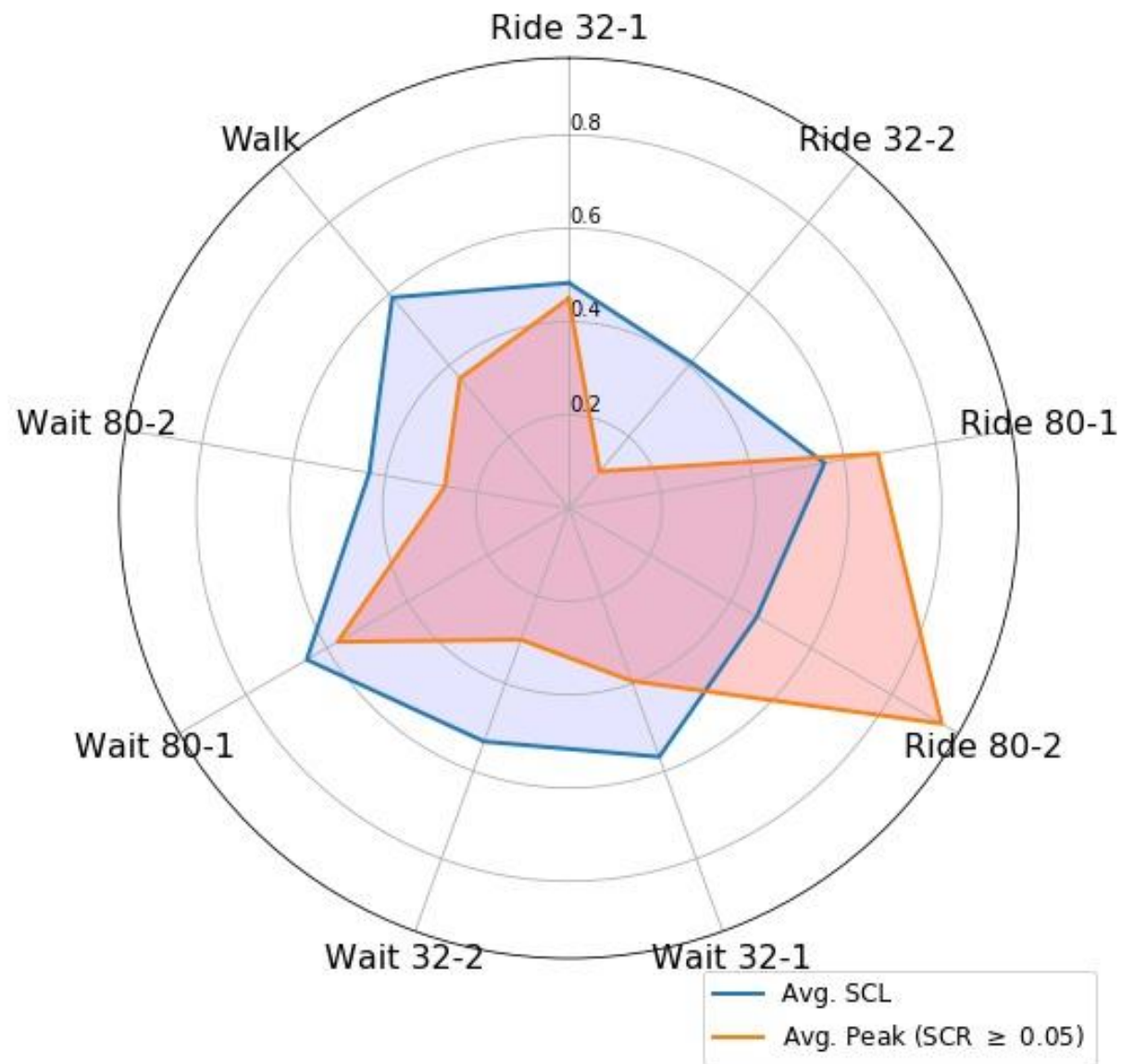
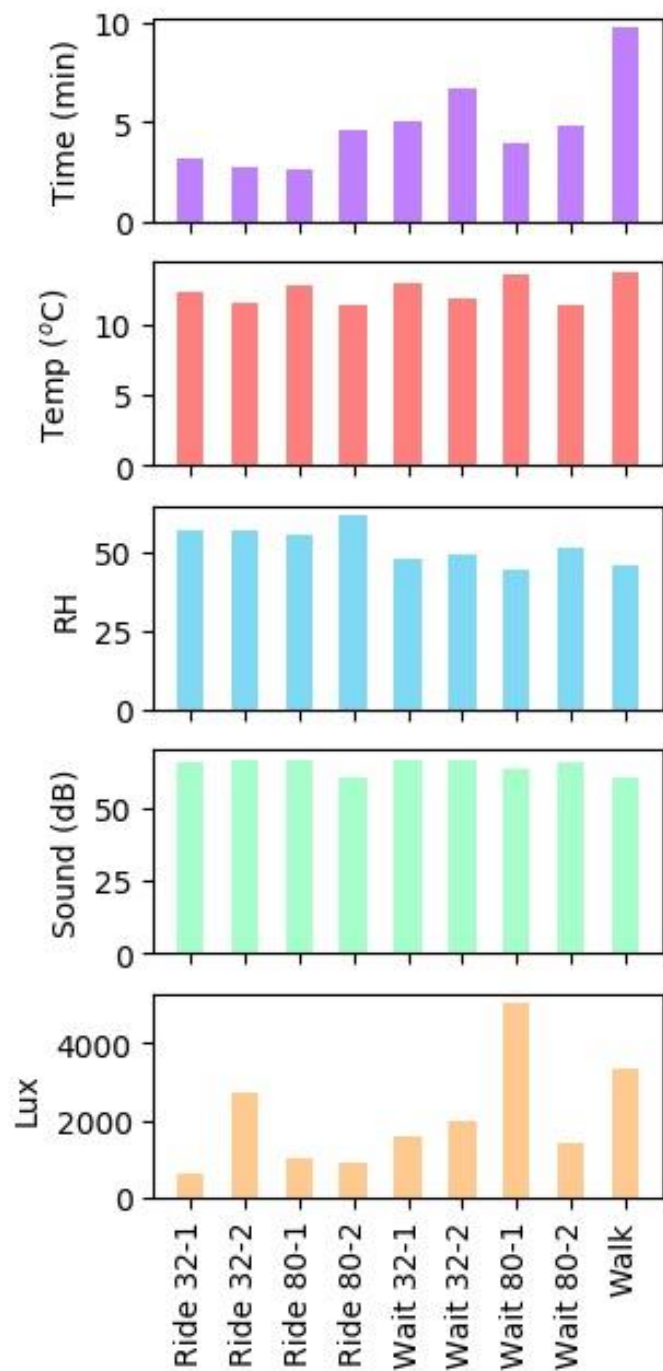


ZURICH





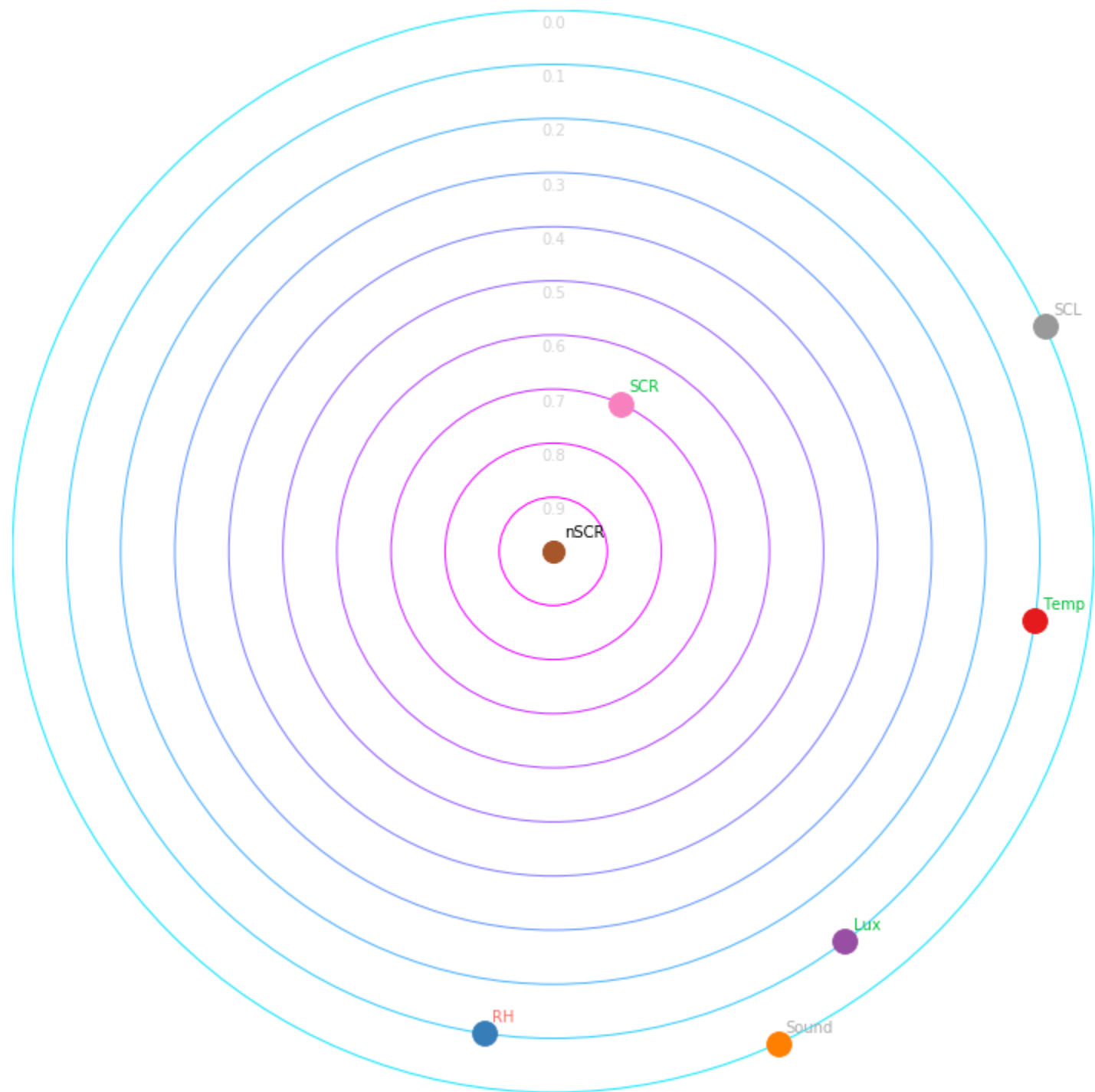
ZURICH





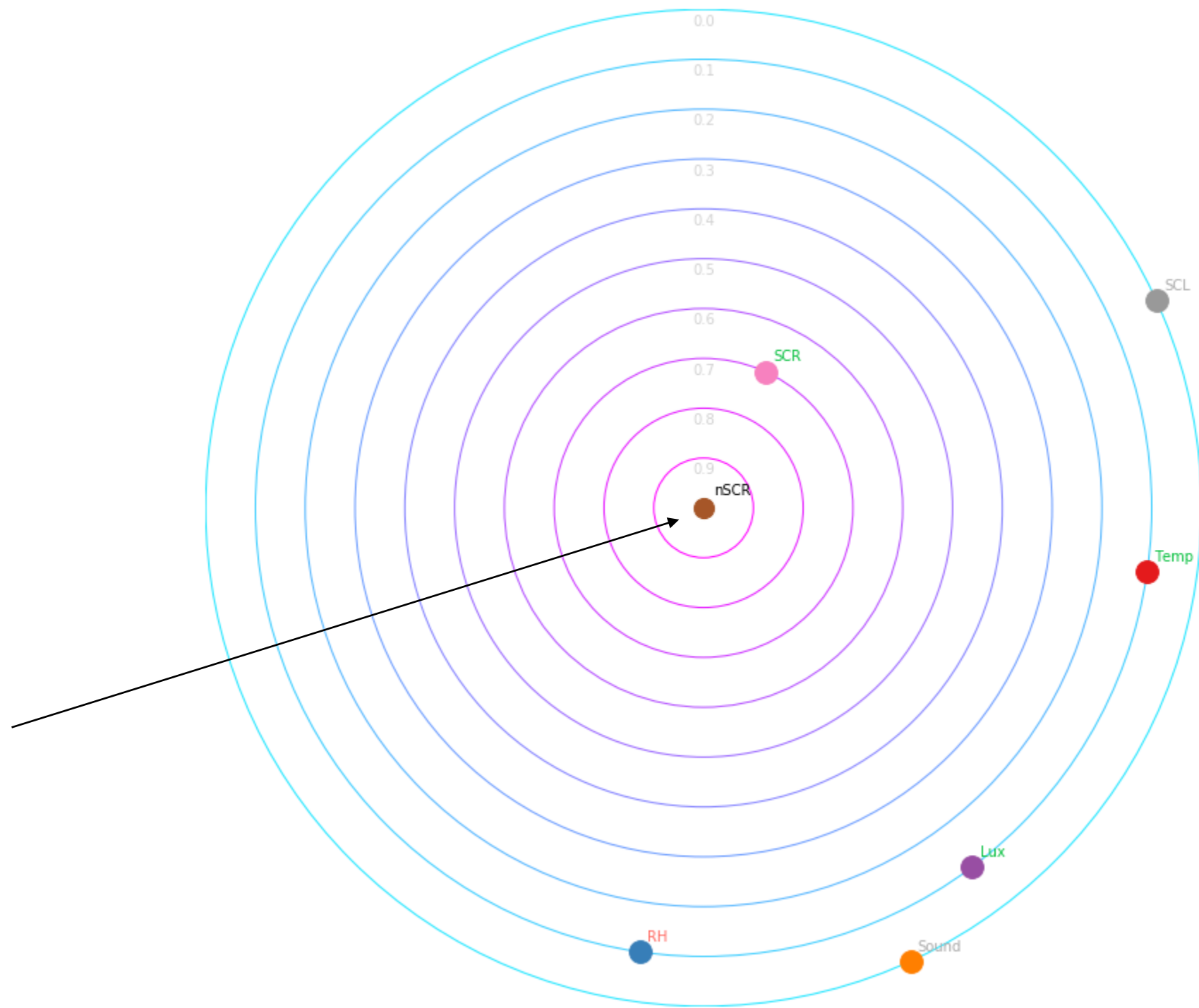
ZURICH

How the measured variables are correlated to arousal?



 ZURICH

Arousal (**nSCR**)
is in the center





ZURICH

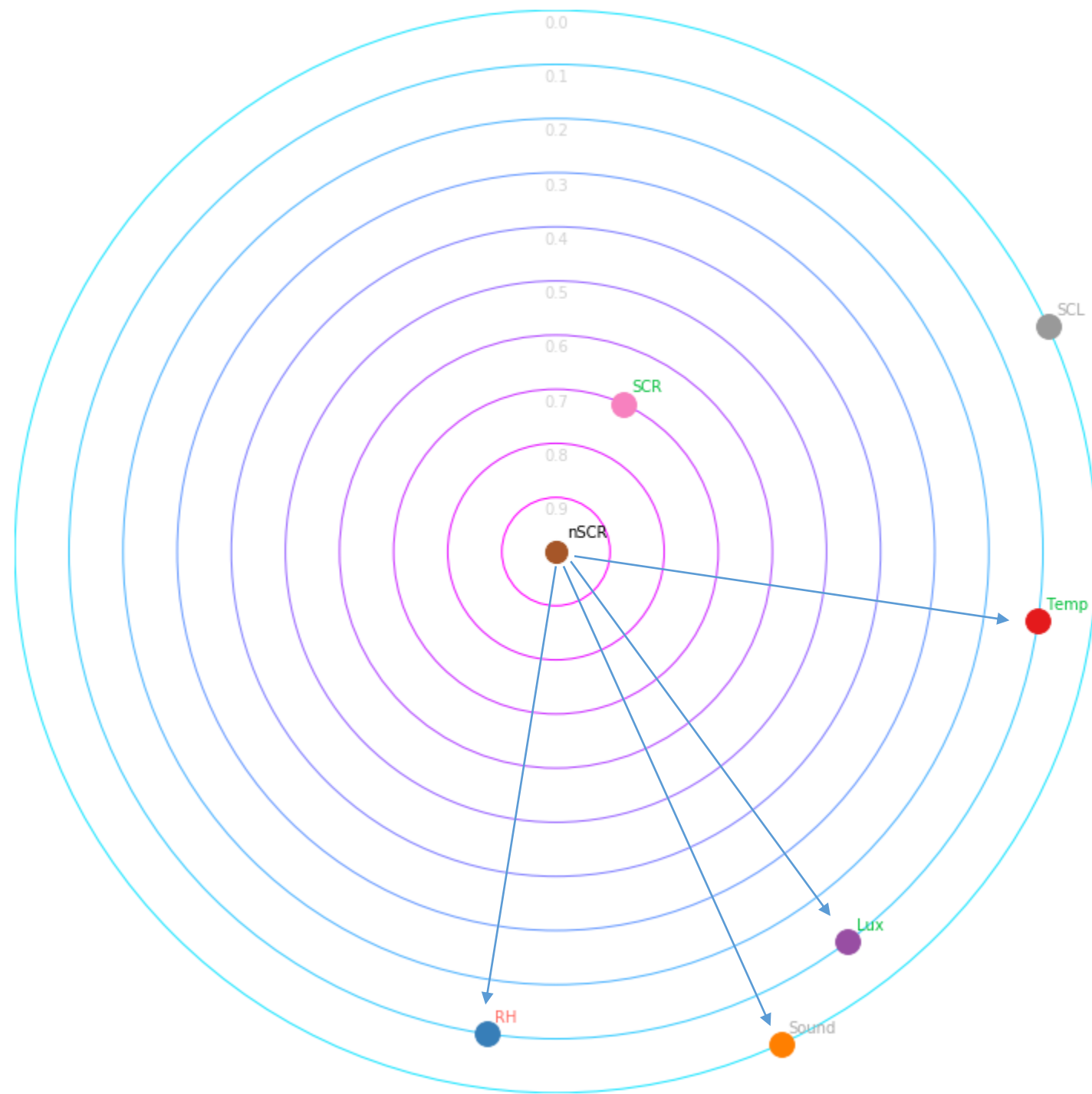
Peak (Arousal)

Temperature

Humidity

Illuminance

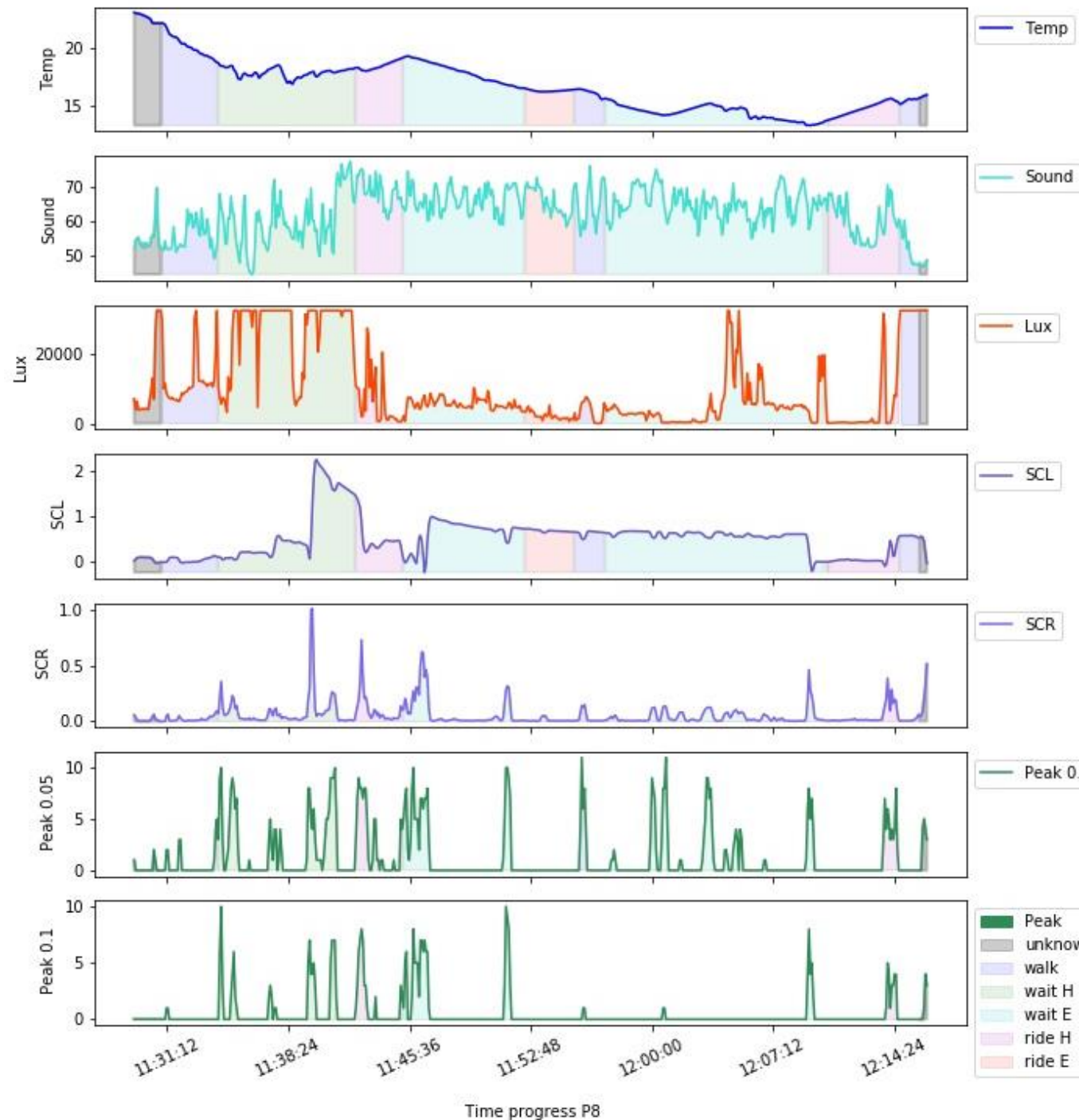
Sound



ZURICH



Changes in the
measured variables
over time

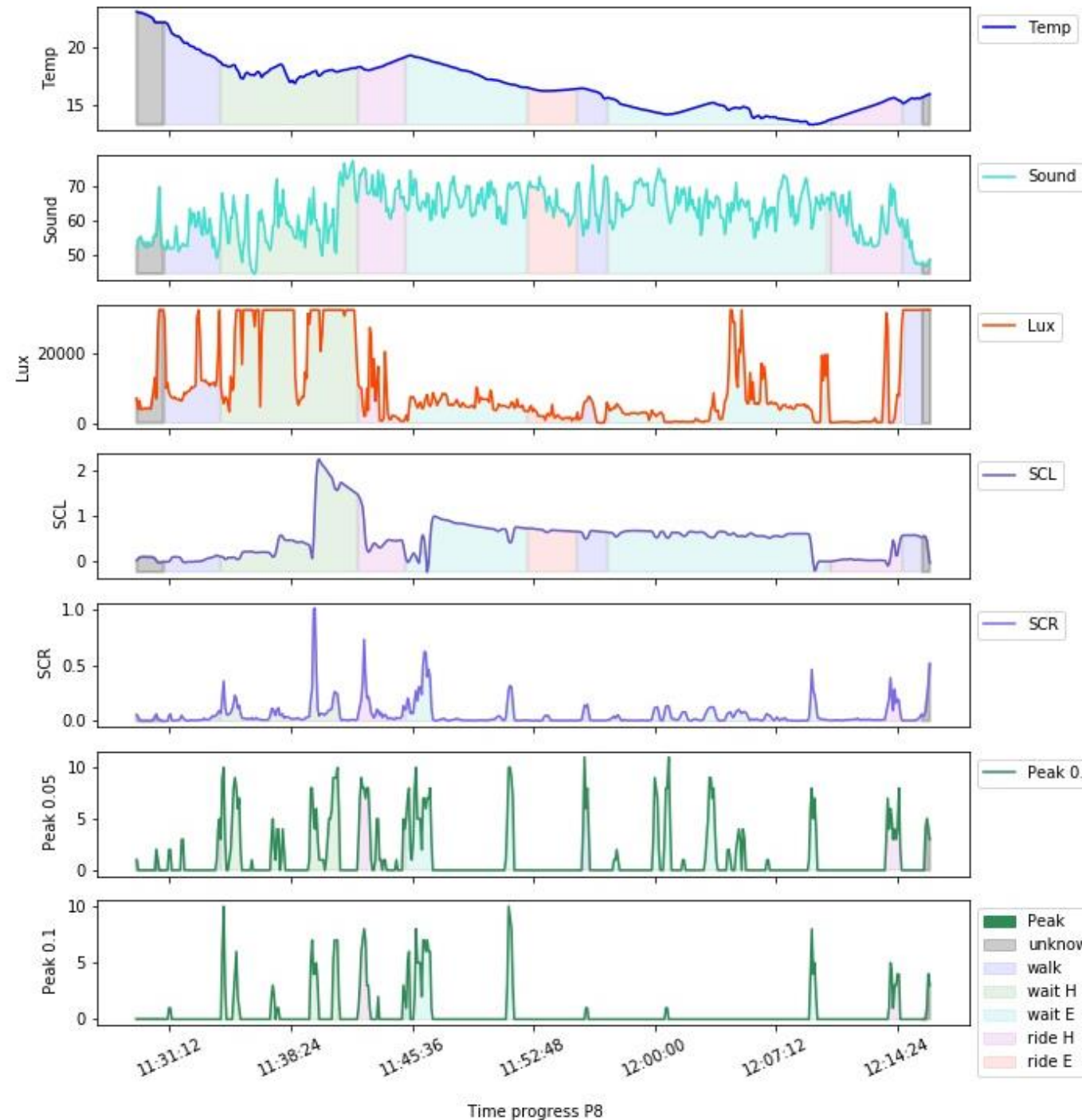




ZURICH

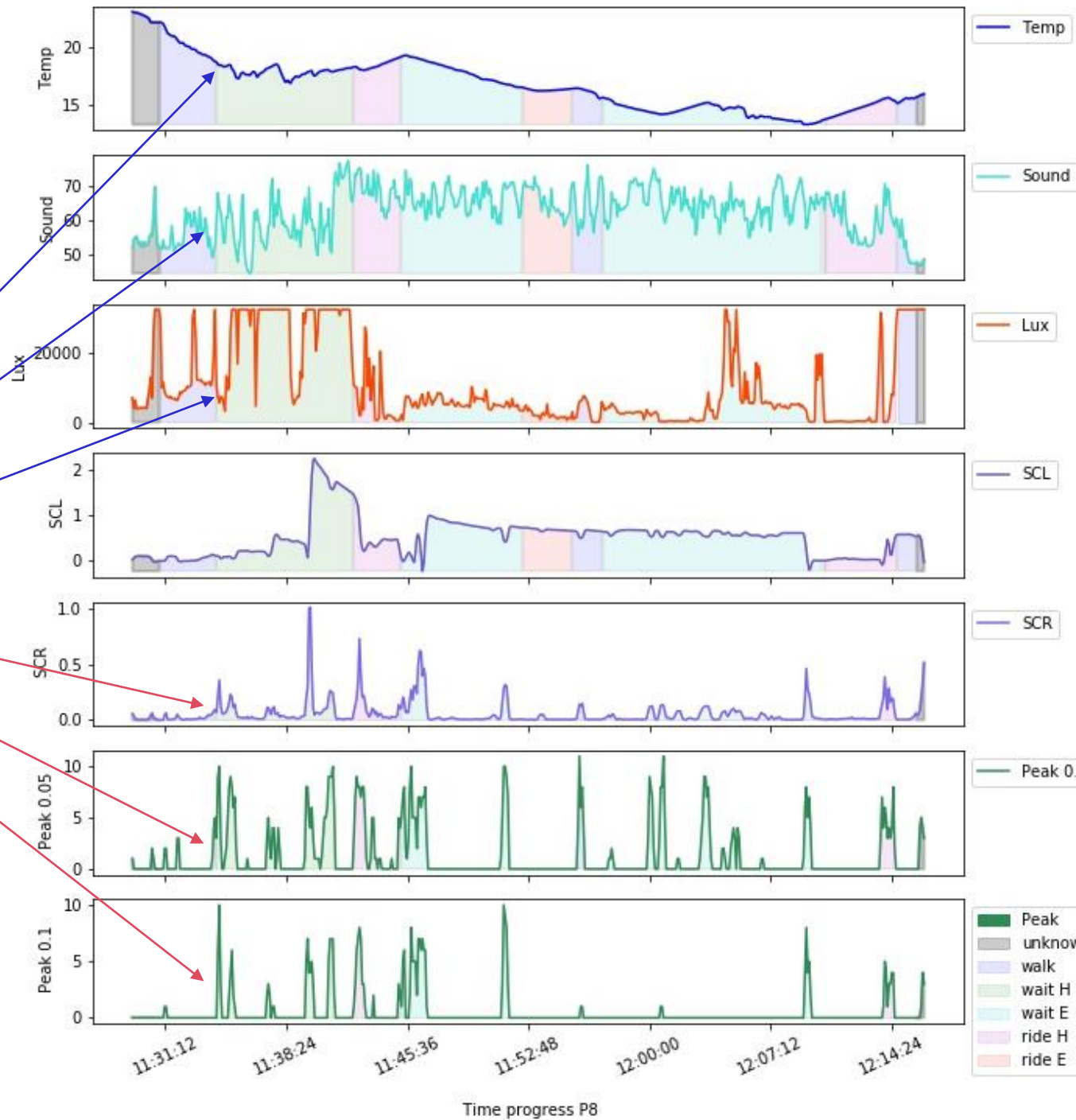
Temp is ▲ when a participant board a bus and ▼ when the participant leaves the bus.

Variability of **Sound** is seems irregular, however it ▲ before all ride.

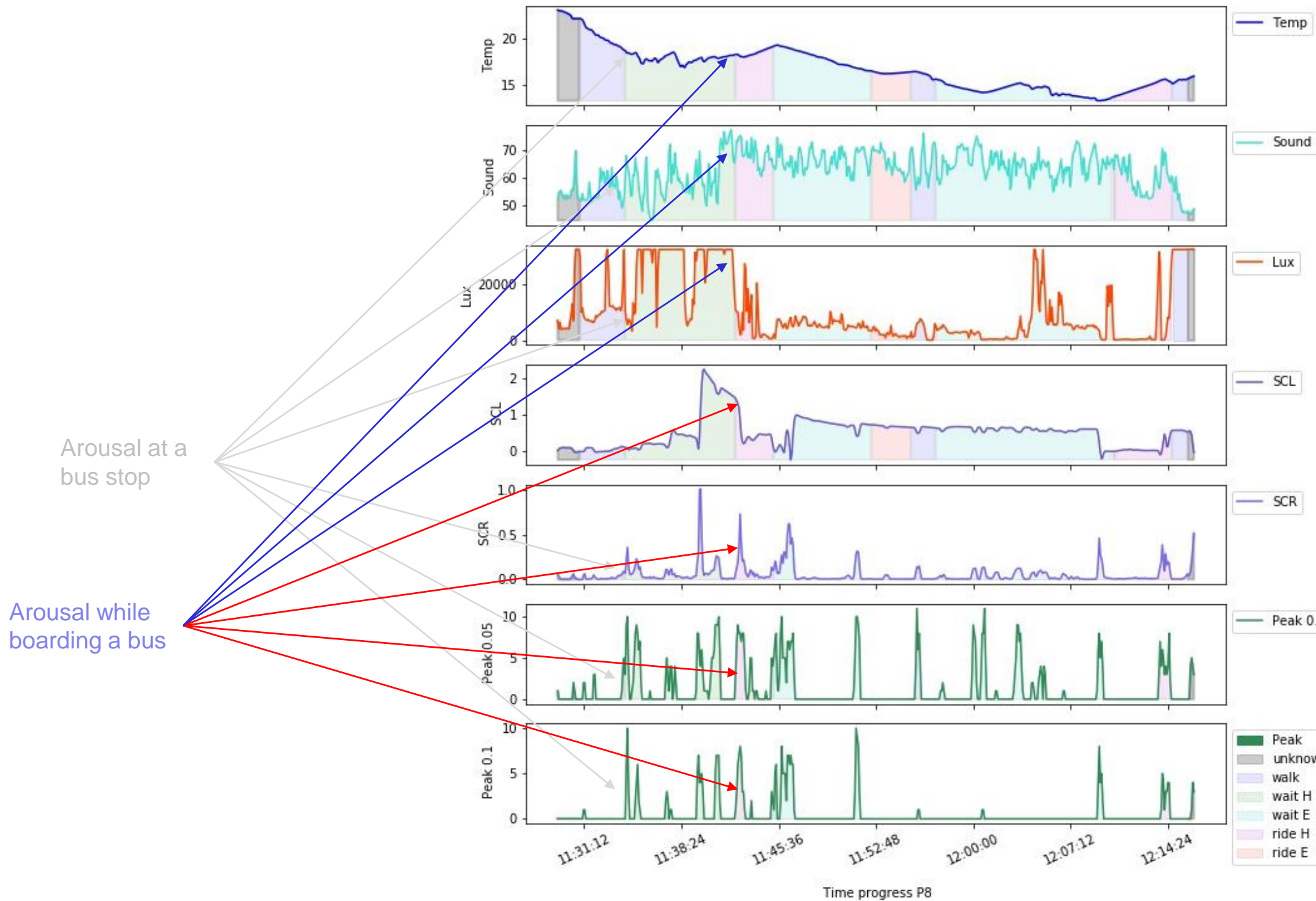


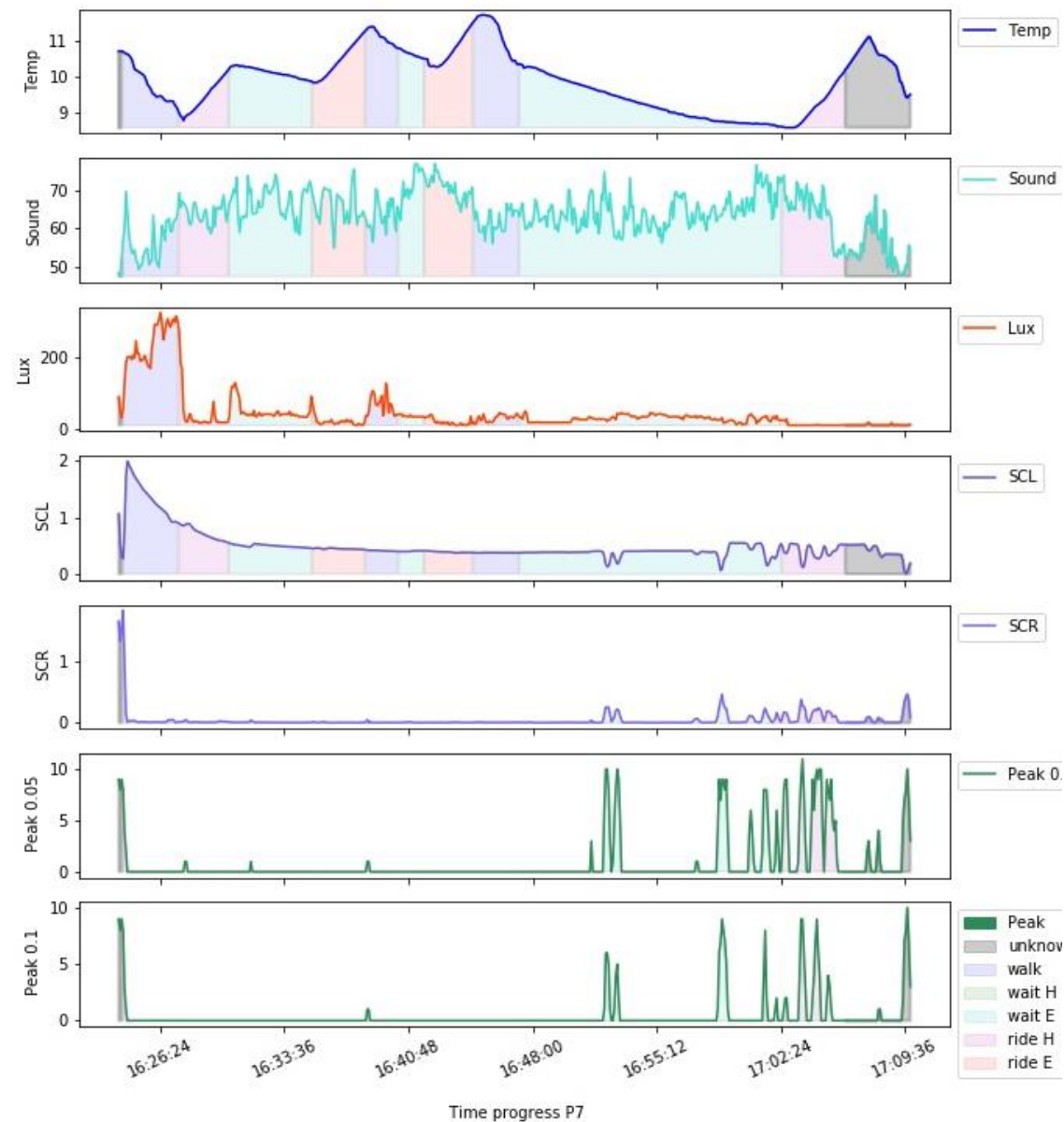
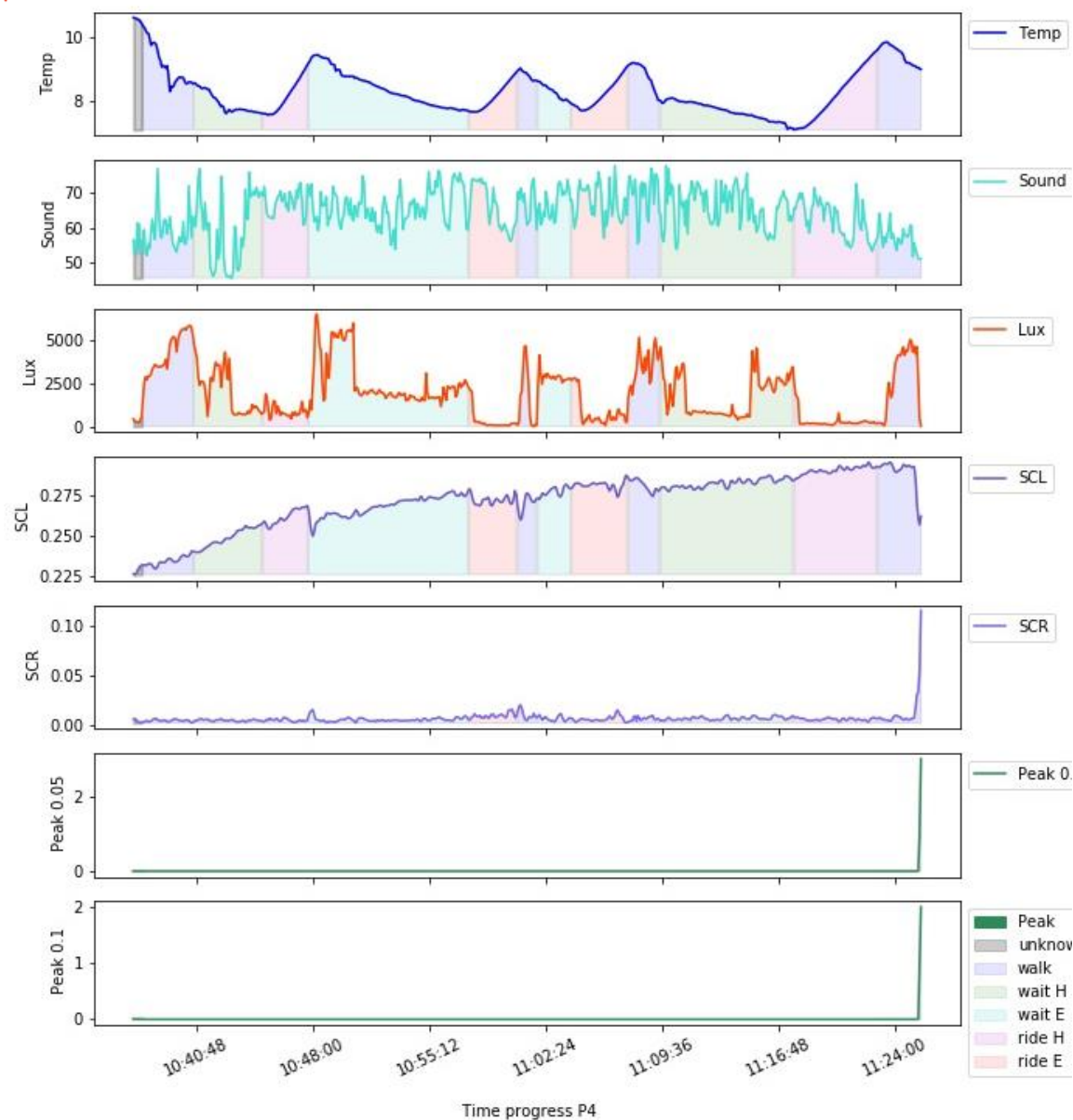
ZURICH

Arousal at
the arrival of
a bus stop



ZURICH







ZURICH





ZURICH

Heatmap of arousal



Temperature



Humidity



Sound

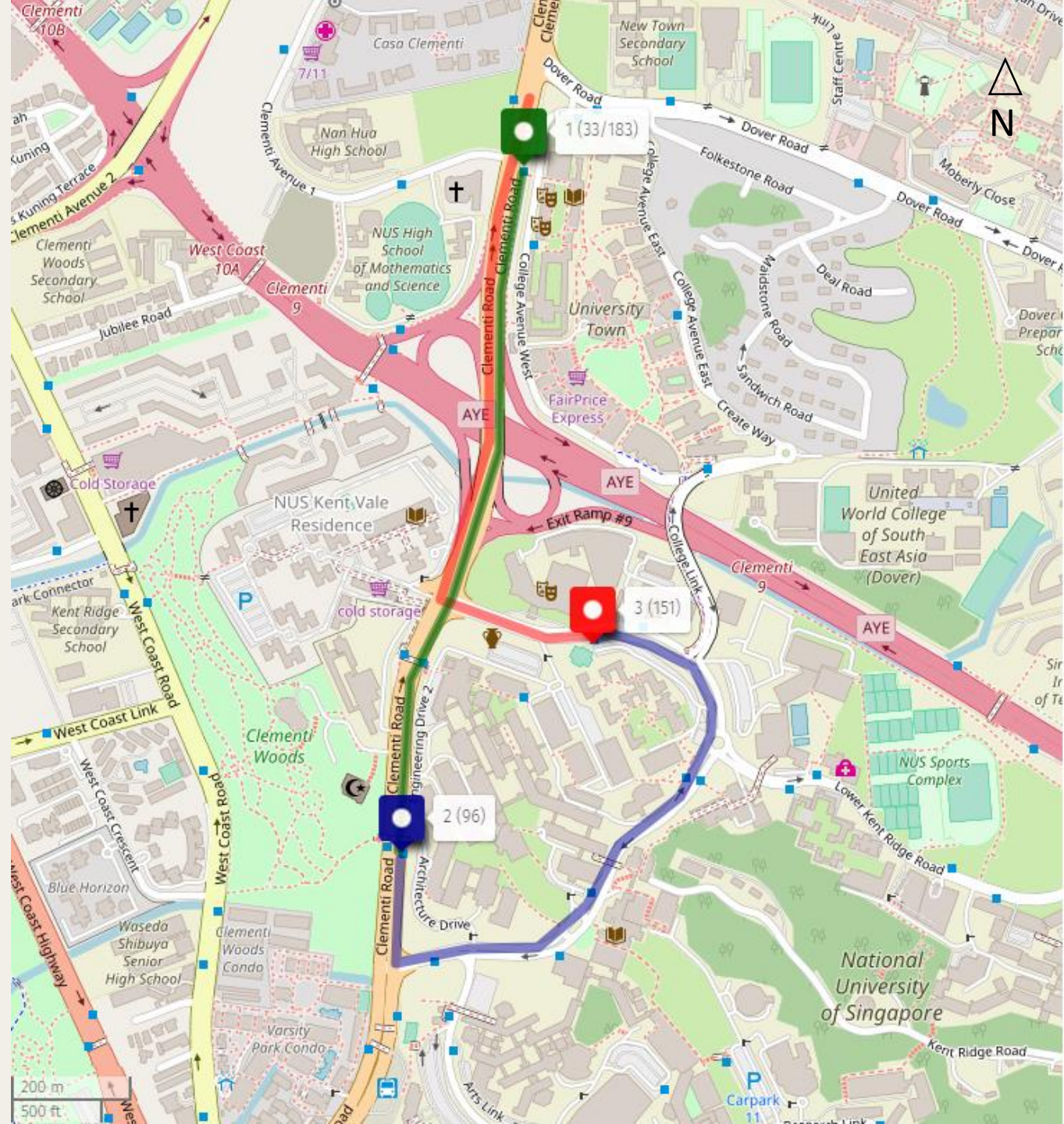


Illuminance



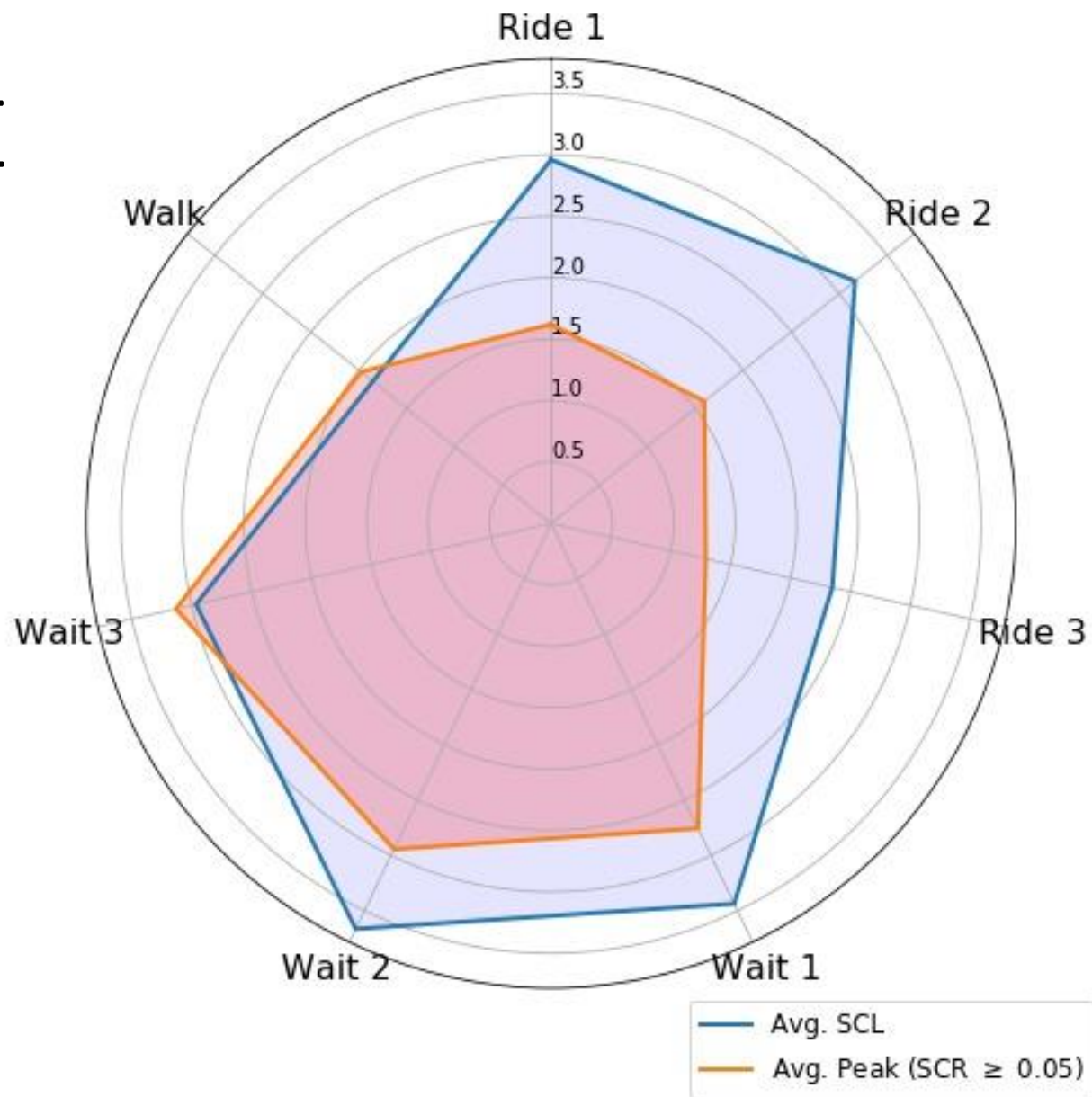
SINGAPORE

- Route of three
- combustion engine
- busses



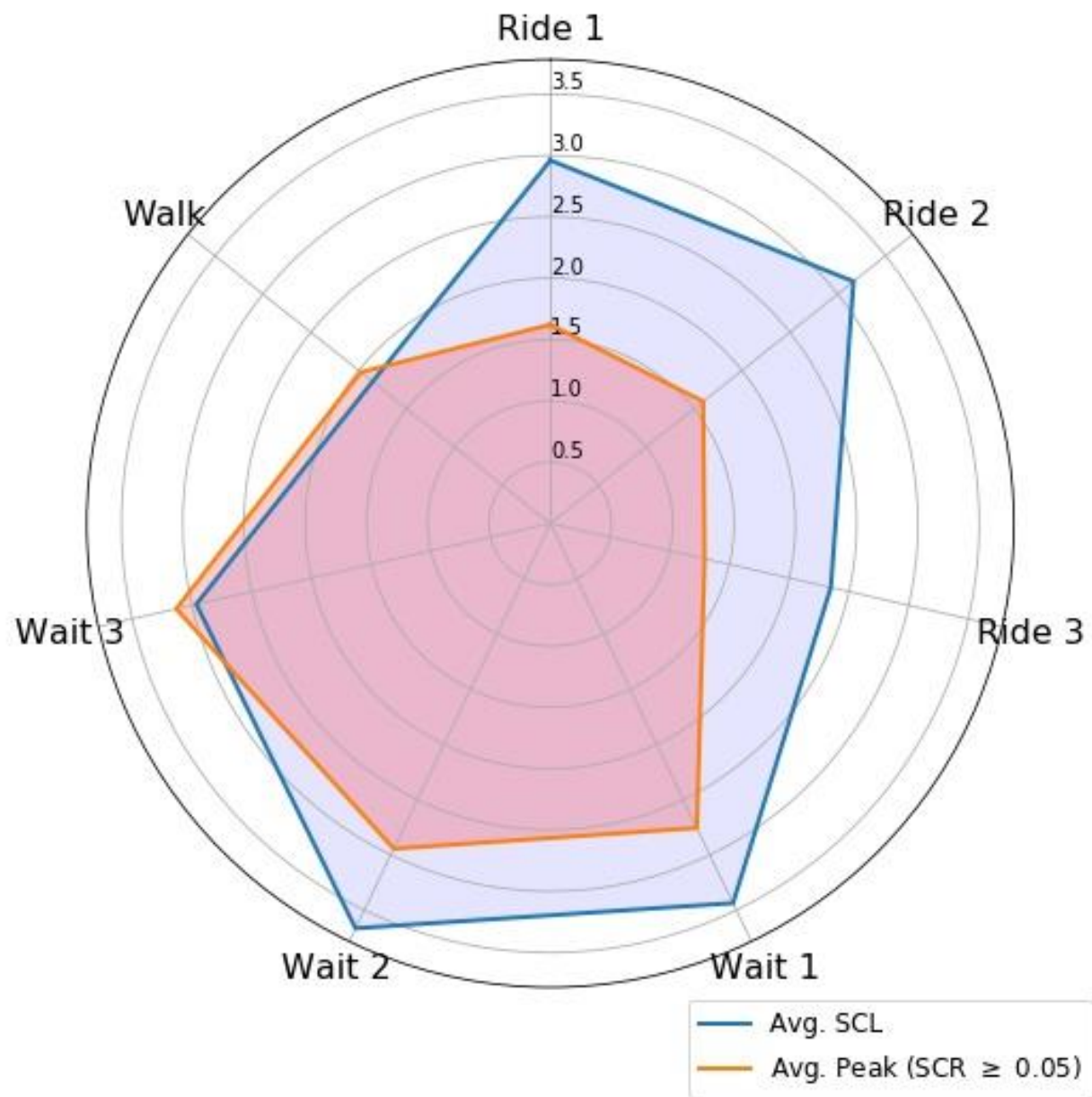
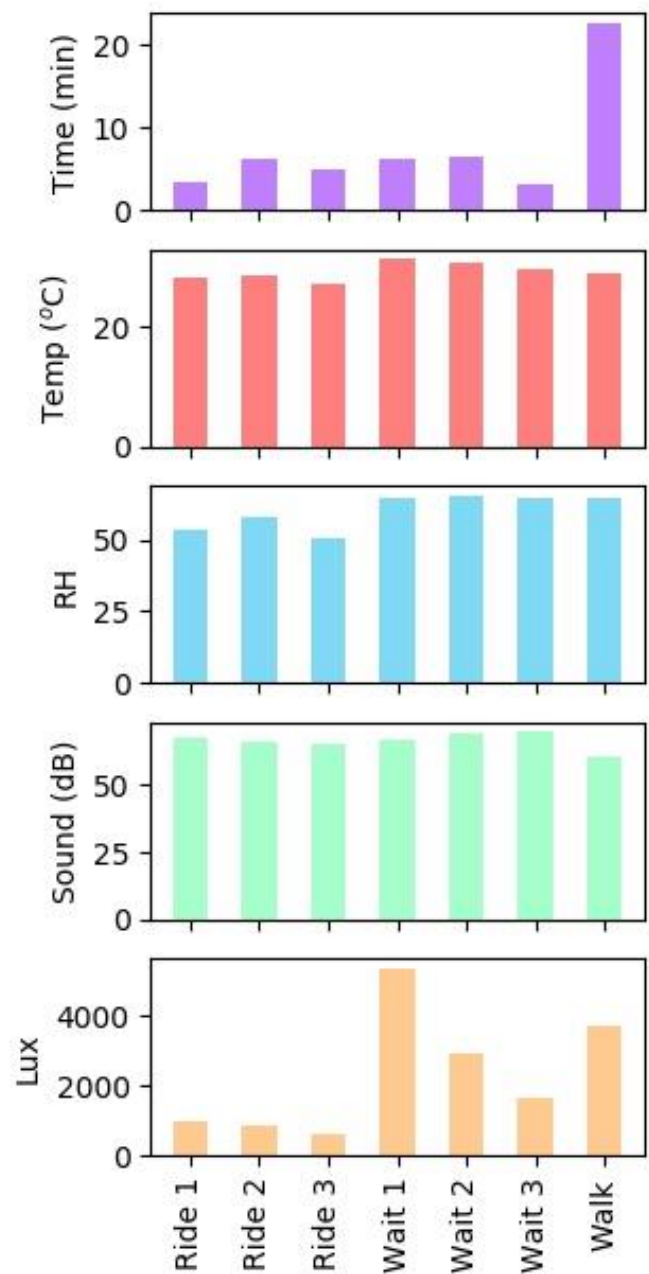


SINGAPORE





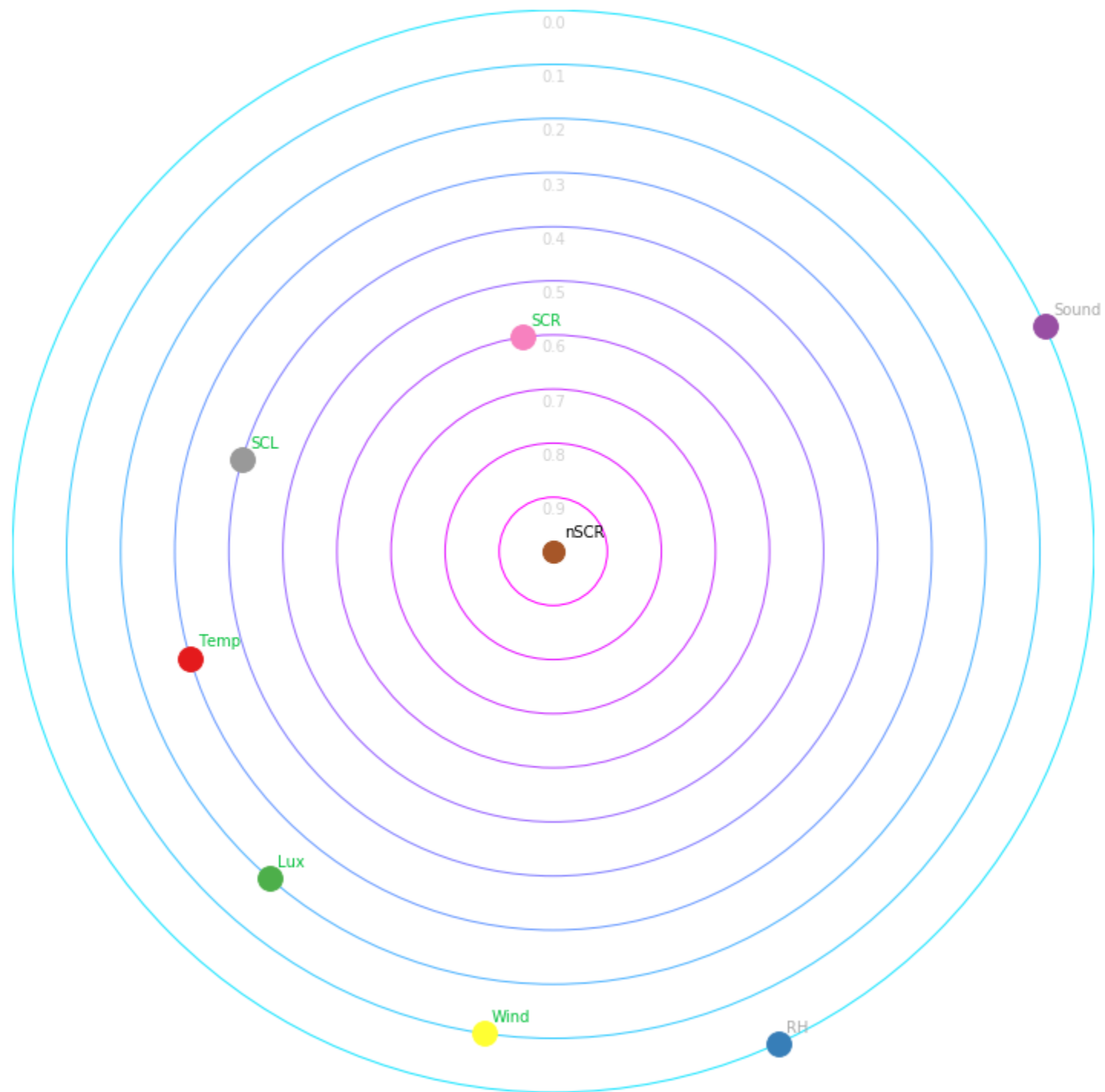
SINGAPORE





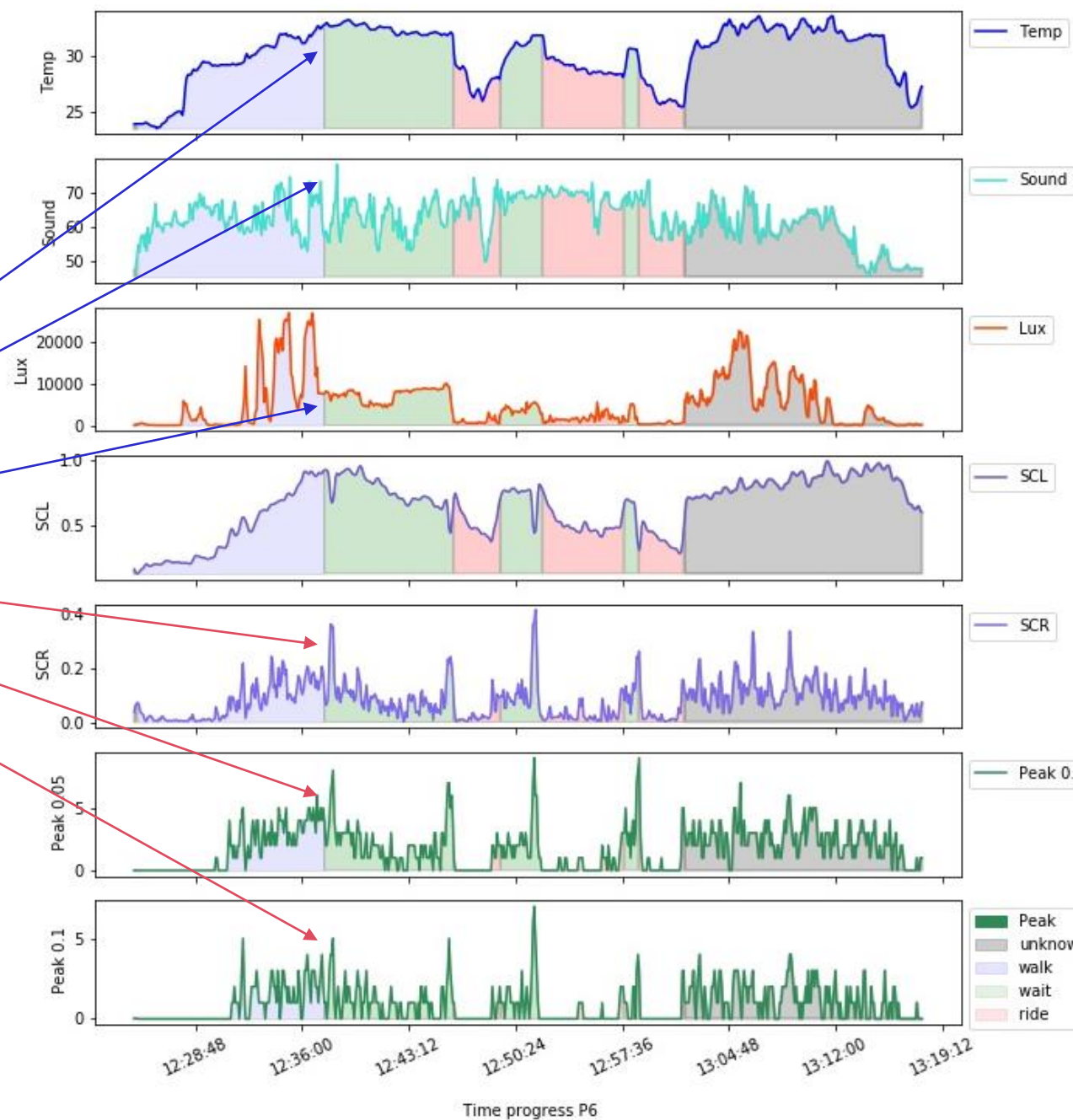
SINGAPORE

How the measured variables are correlated to arousal?



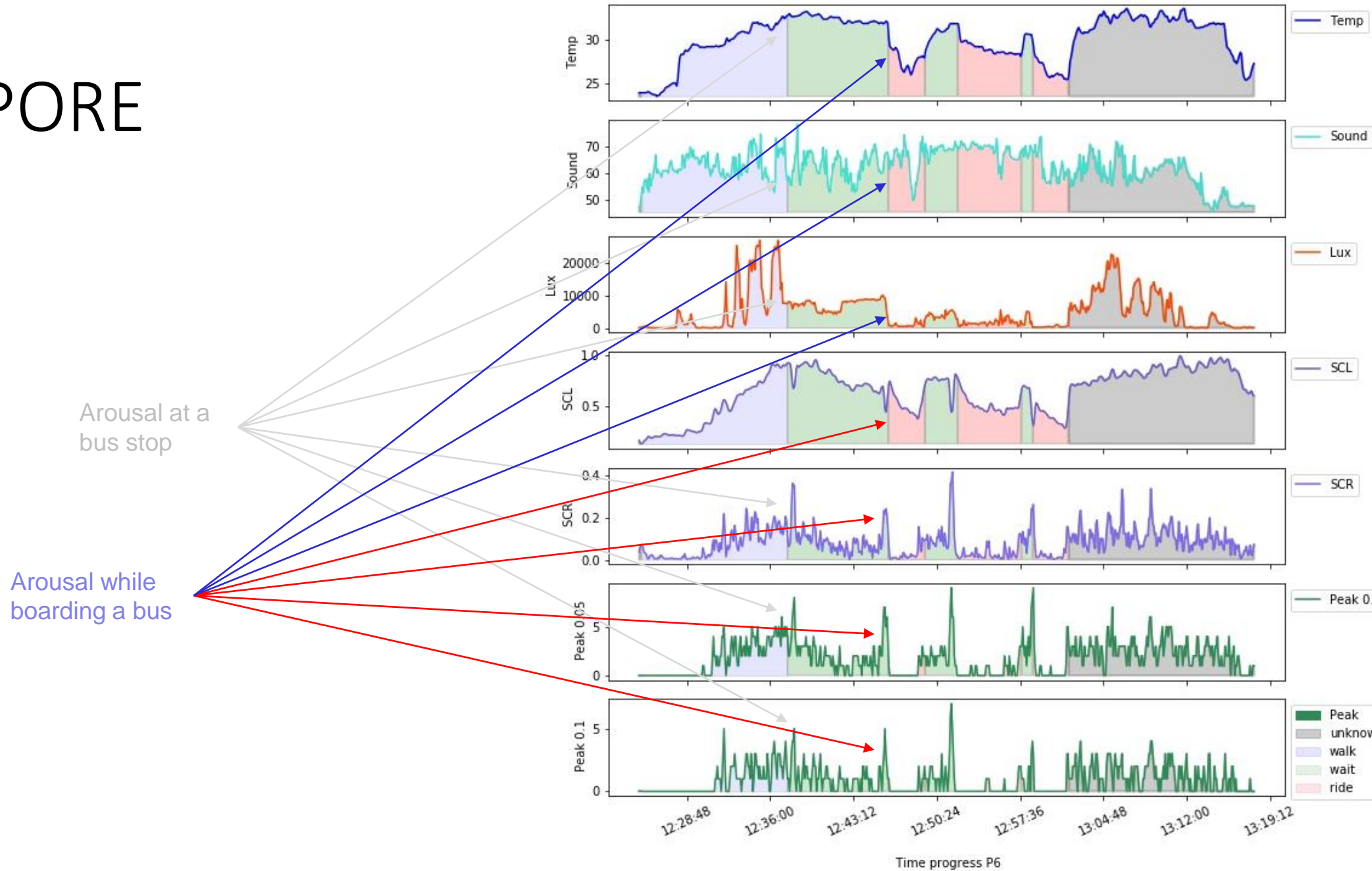
SINGAPORE

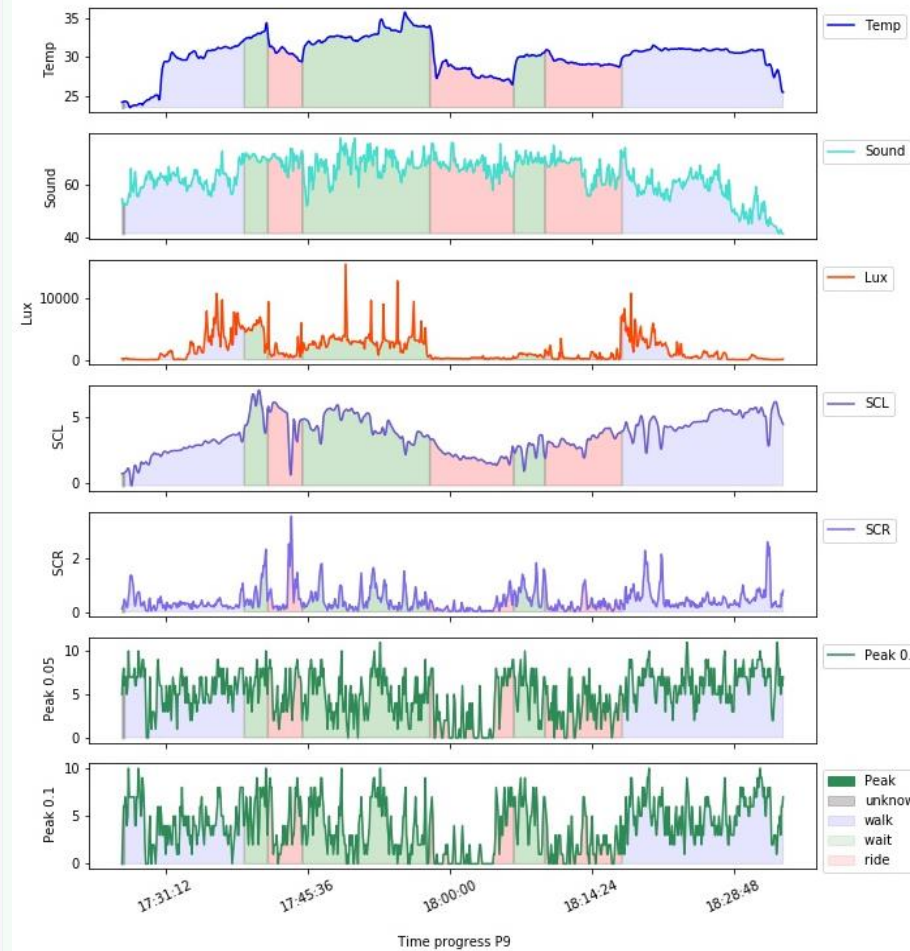
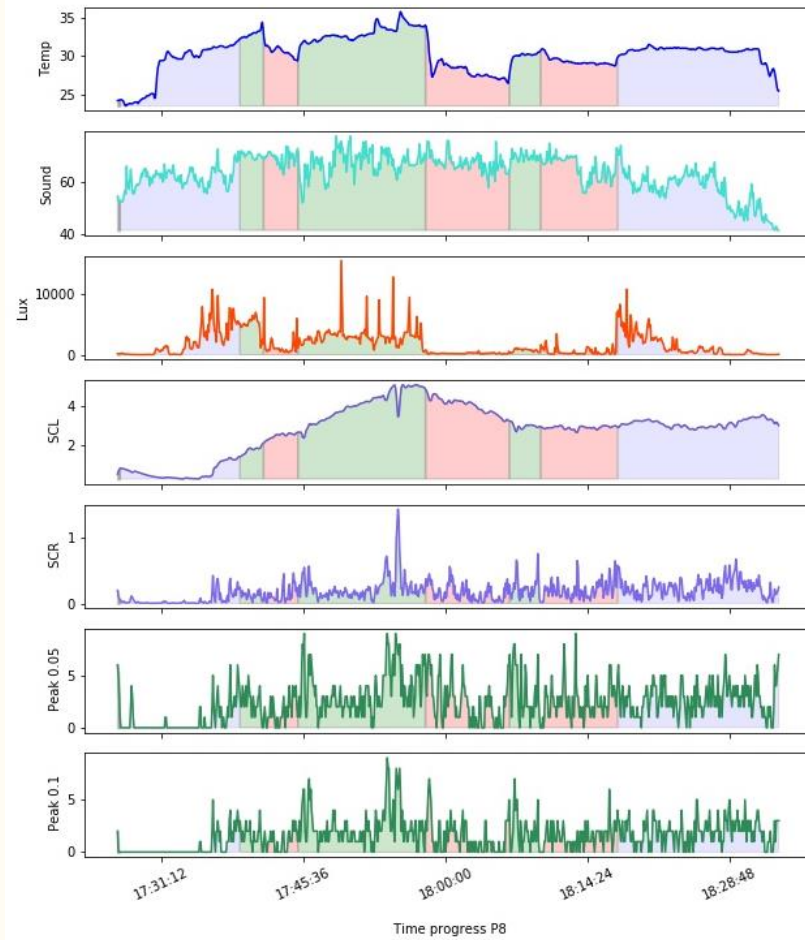
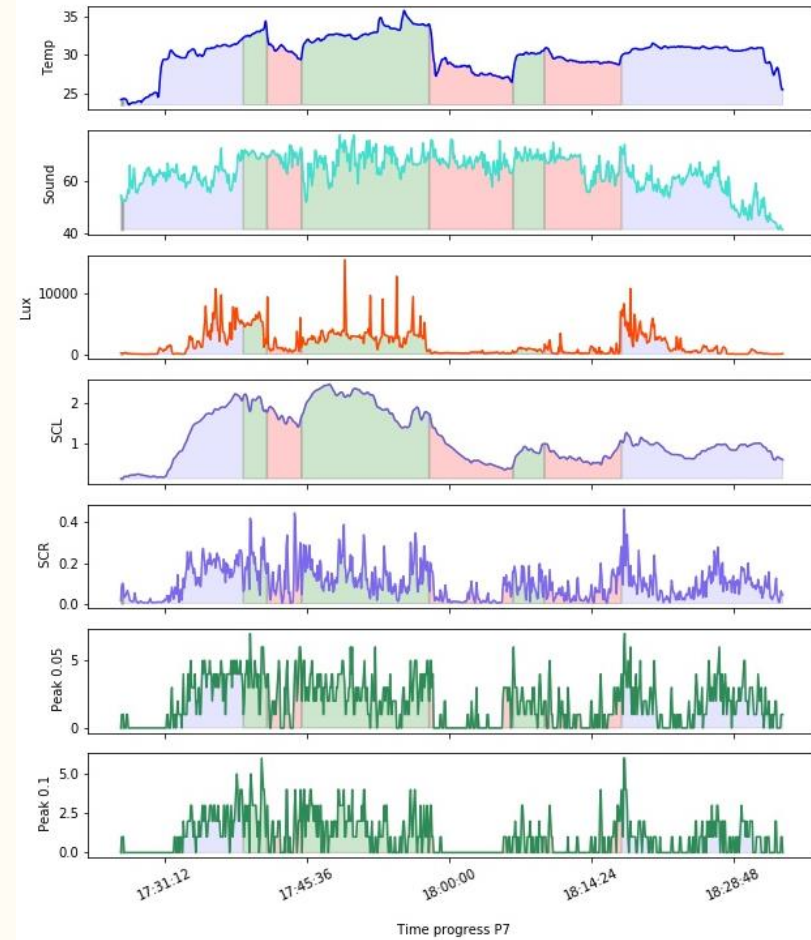
Arousal at
a bus stop

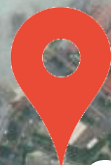




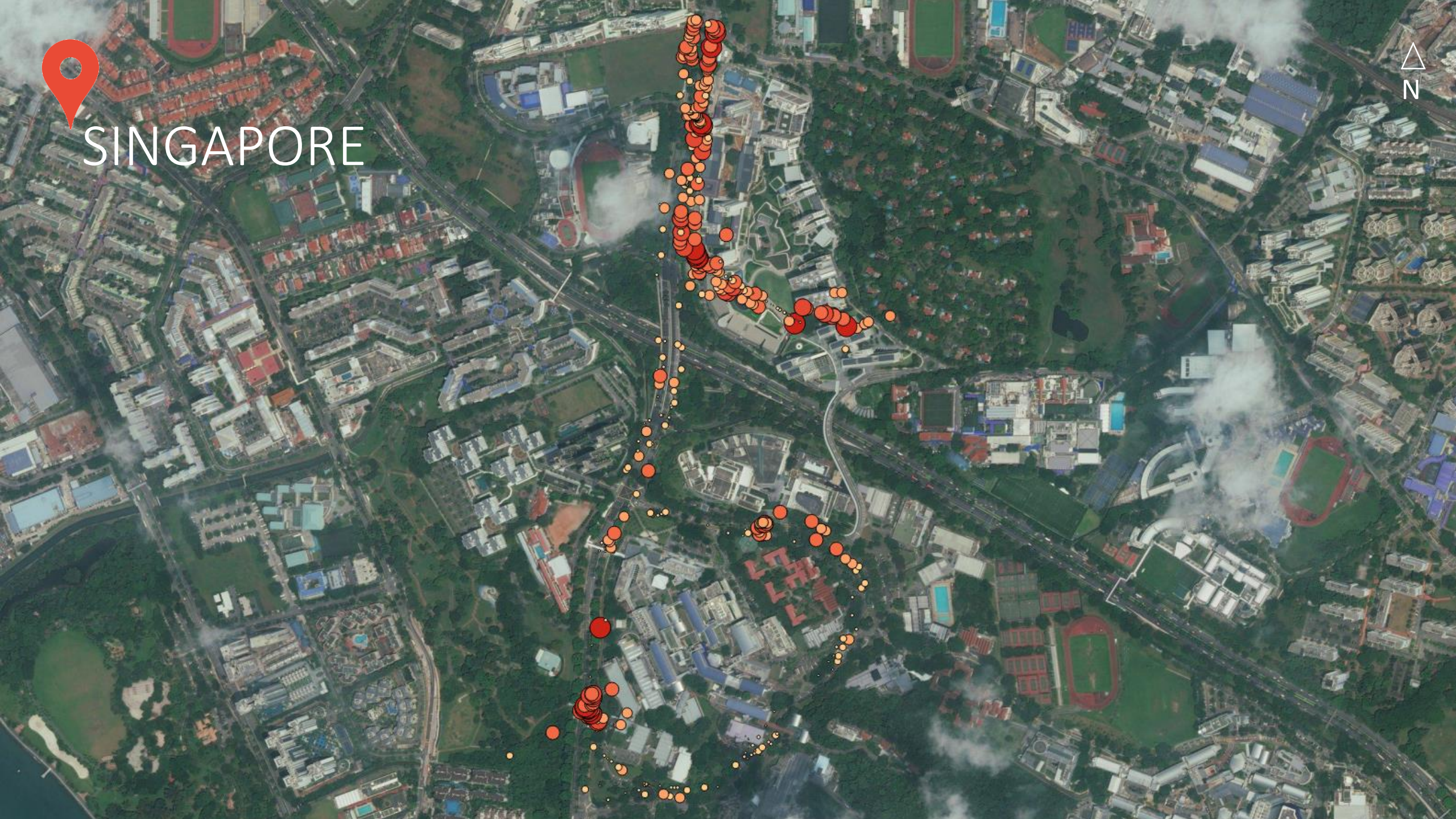
SINGAPORE







SINGAPORE





SINGAPORE

Heatmap of arousal



Temperature



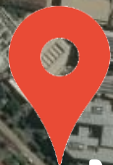
Humidity



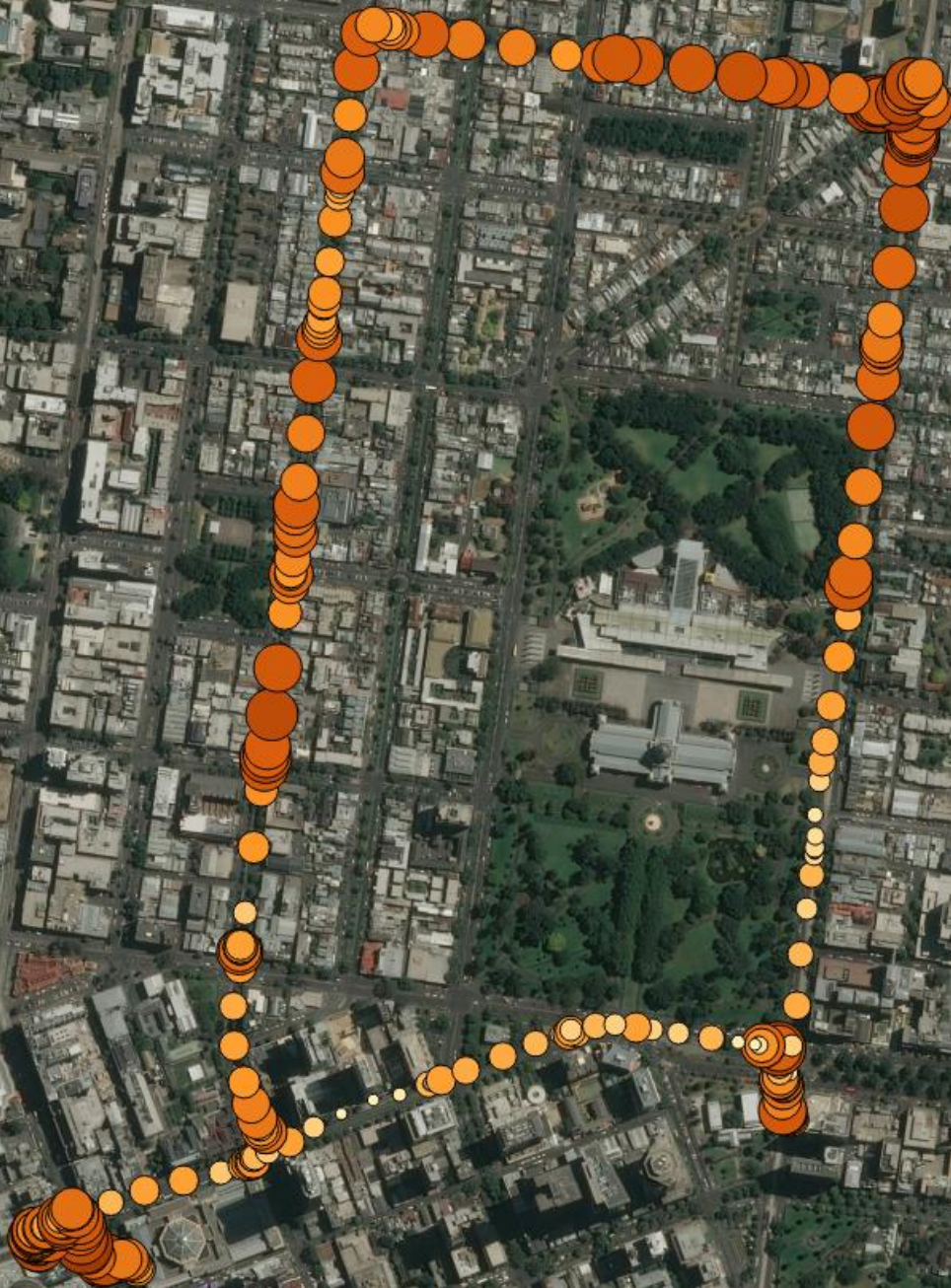
Sound



Illuminance



MELBOURNE





MELBOURNE

Heatmap of arousal



Temperature



Humidity

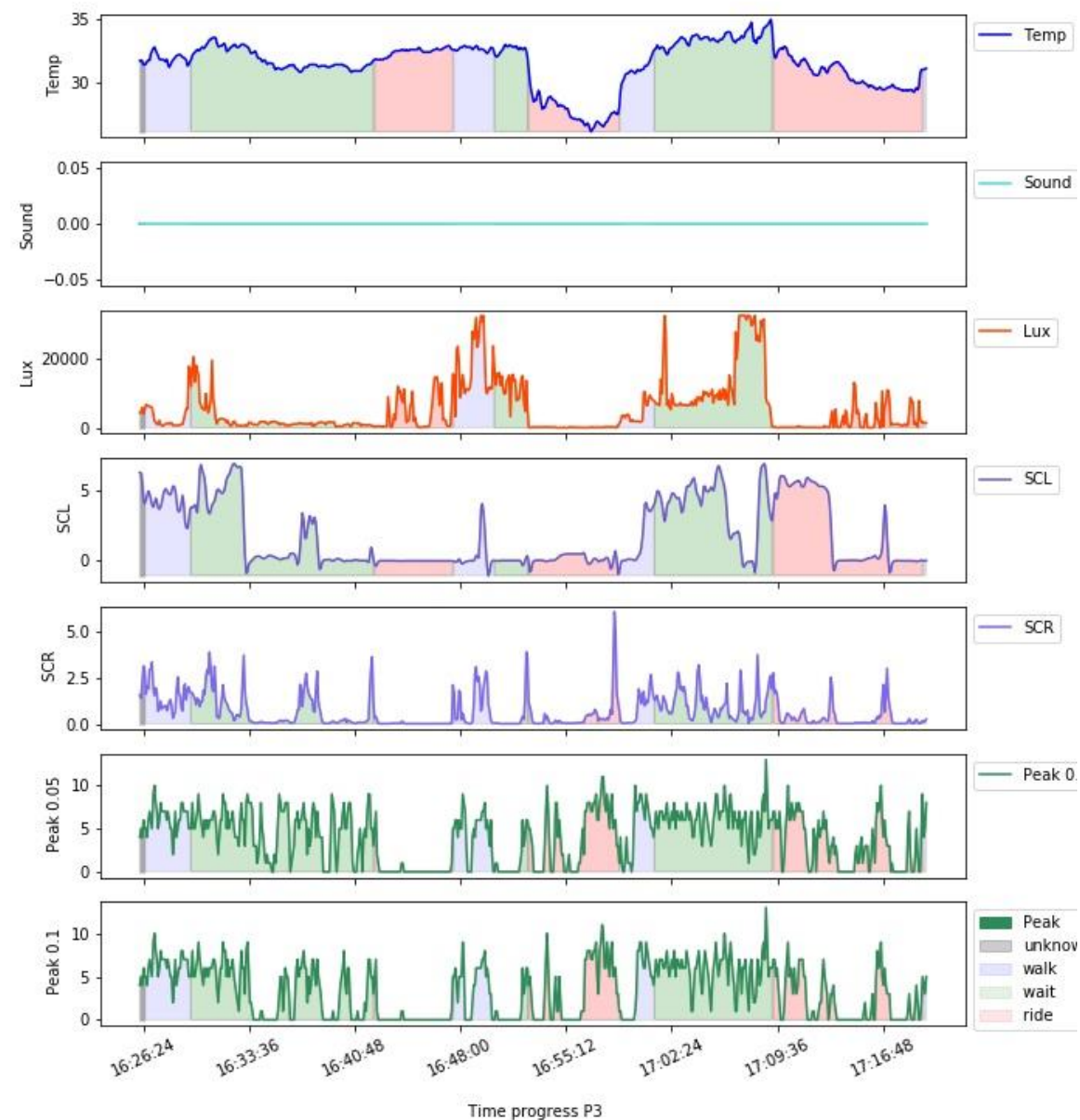
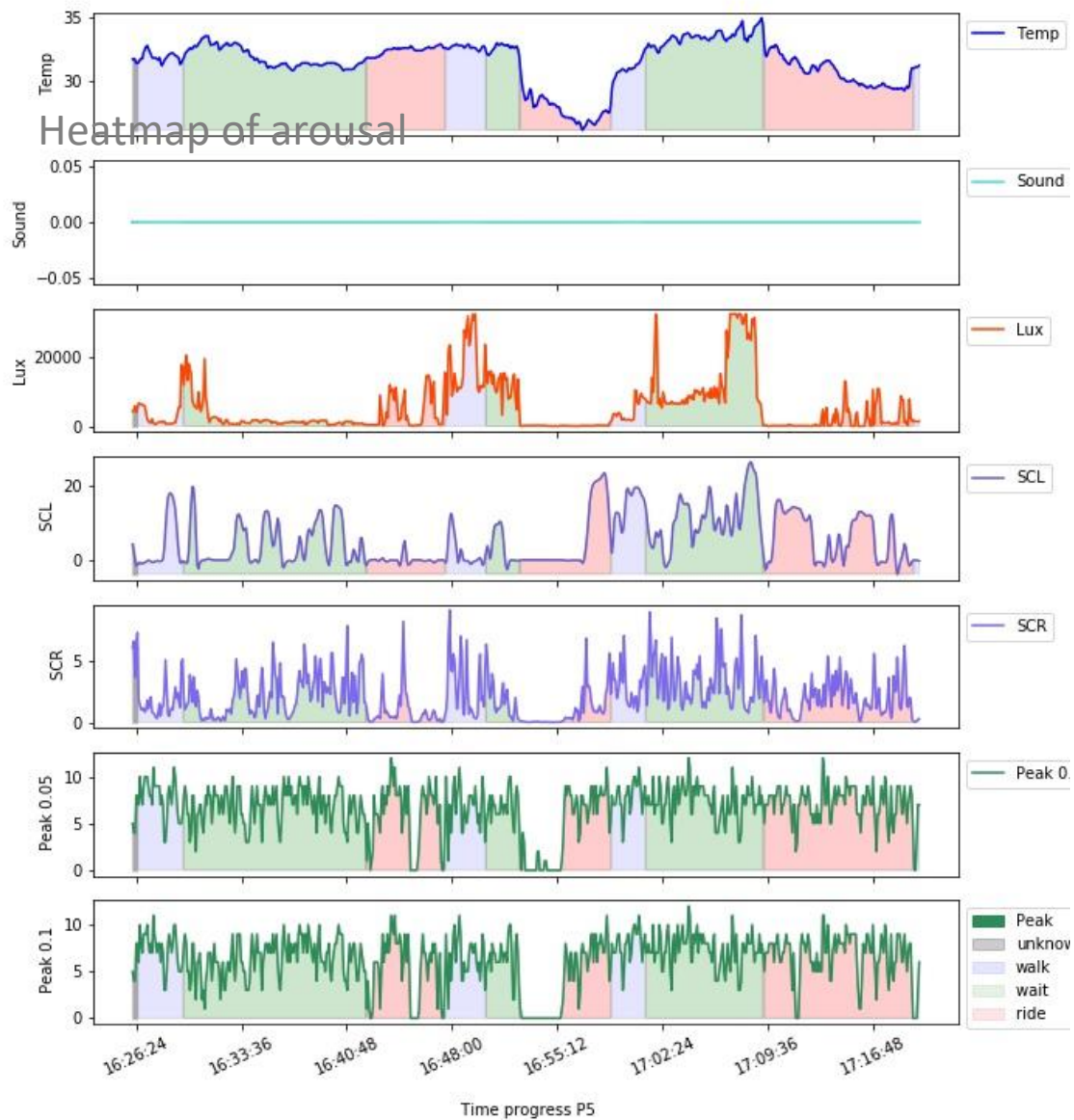


Wind



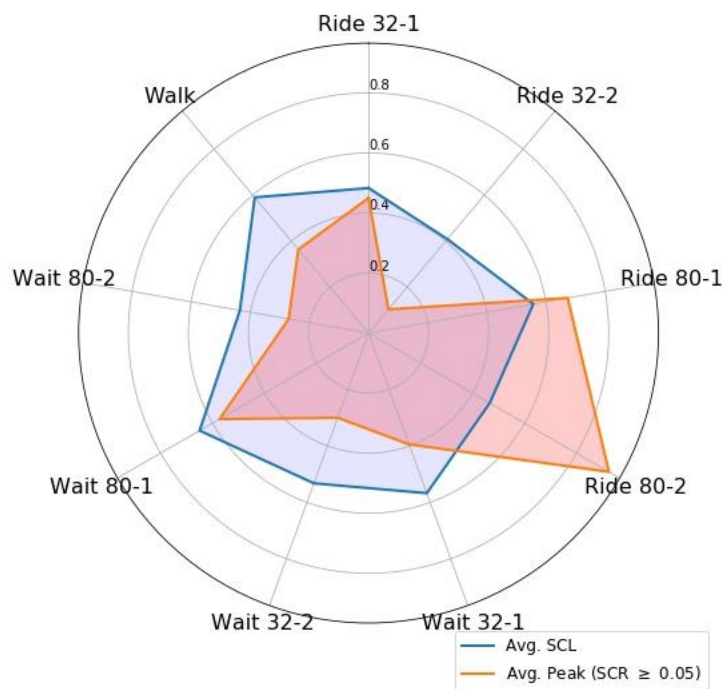
Illuminance

MELBOURNE

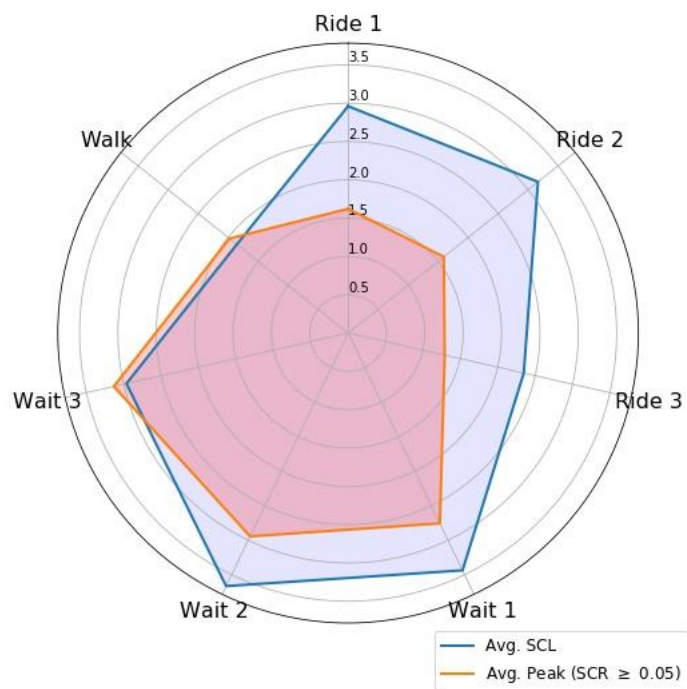




ZURICH



SINGAPORE

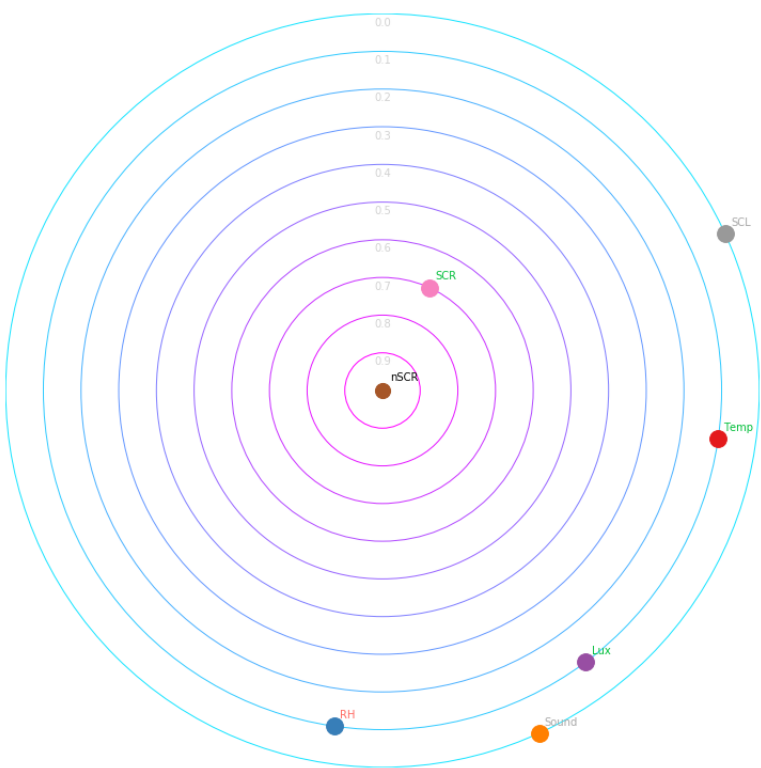


MELBOURNE

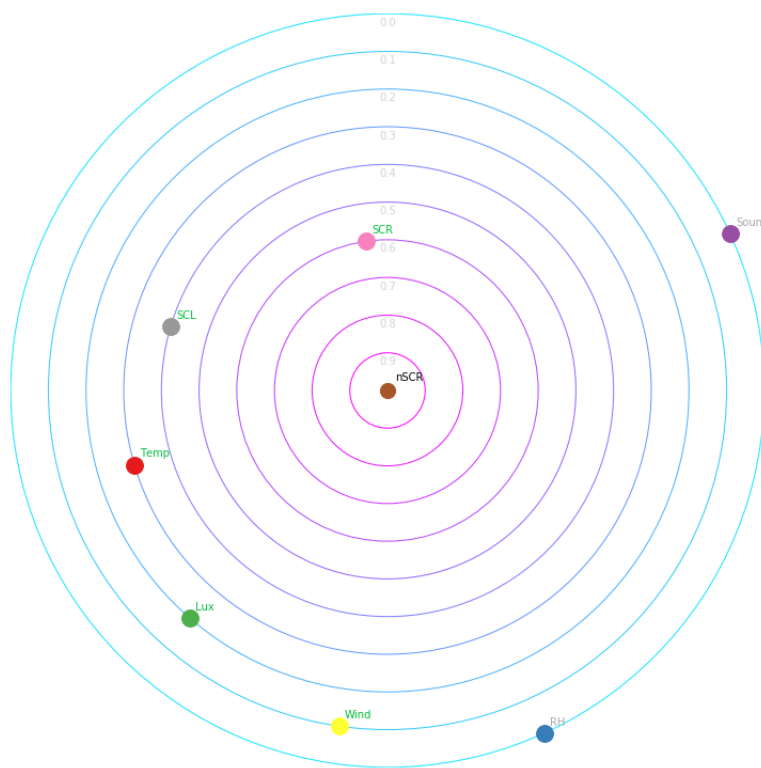




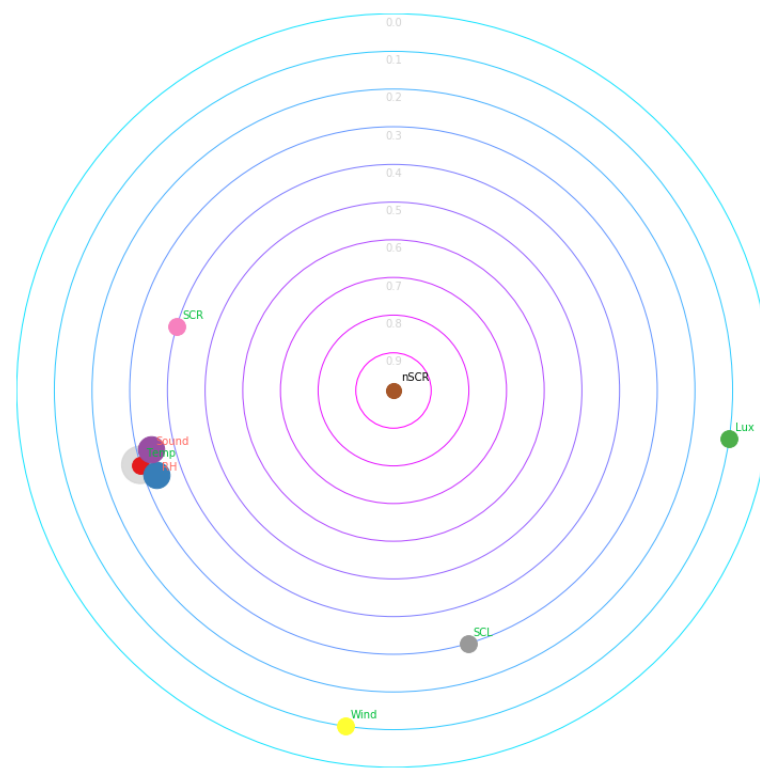
ZURICH



SINGAPORE



MELBOURNE





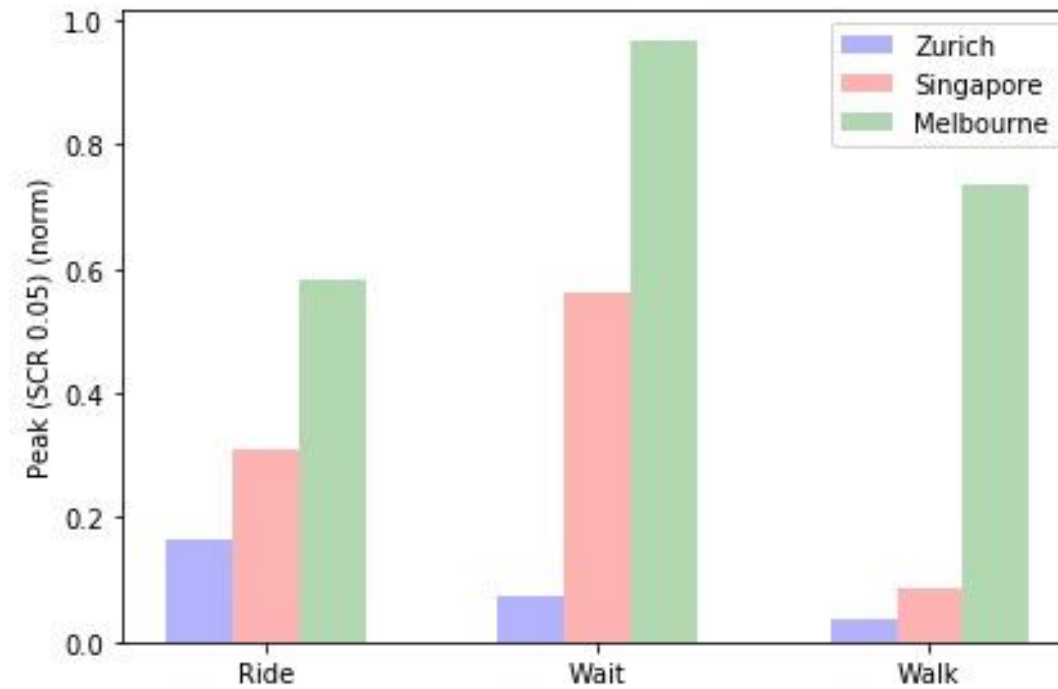
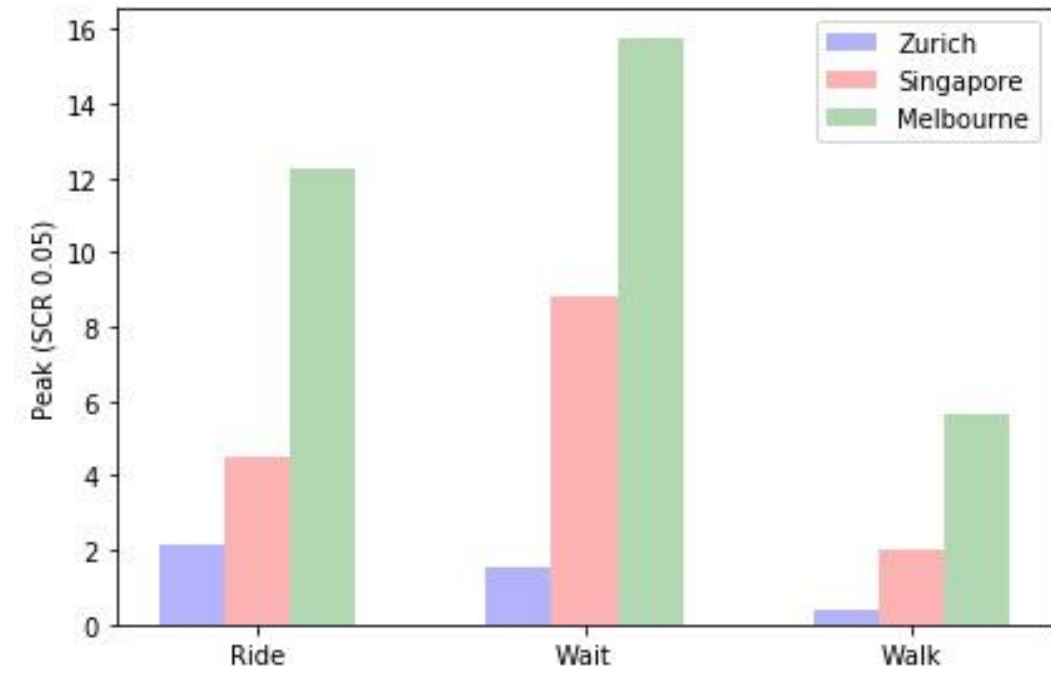
ZURICH



SINGAPORE



MELBOURNE



Thank you

Varun Ojha
ojha@arch.ethz.ch

Acknowledgements

Danielle Griego
griego@arch.ethz.ch

Melnikov Valentin
melnikov@arch.ethz.ch

Philipp Heinz Conrad
Saskia Kuliga
Martin Bielik
Jin Lee