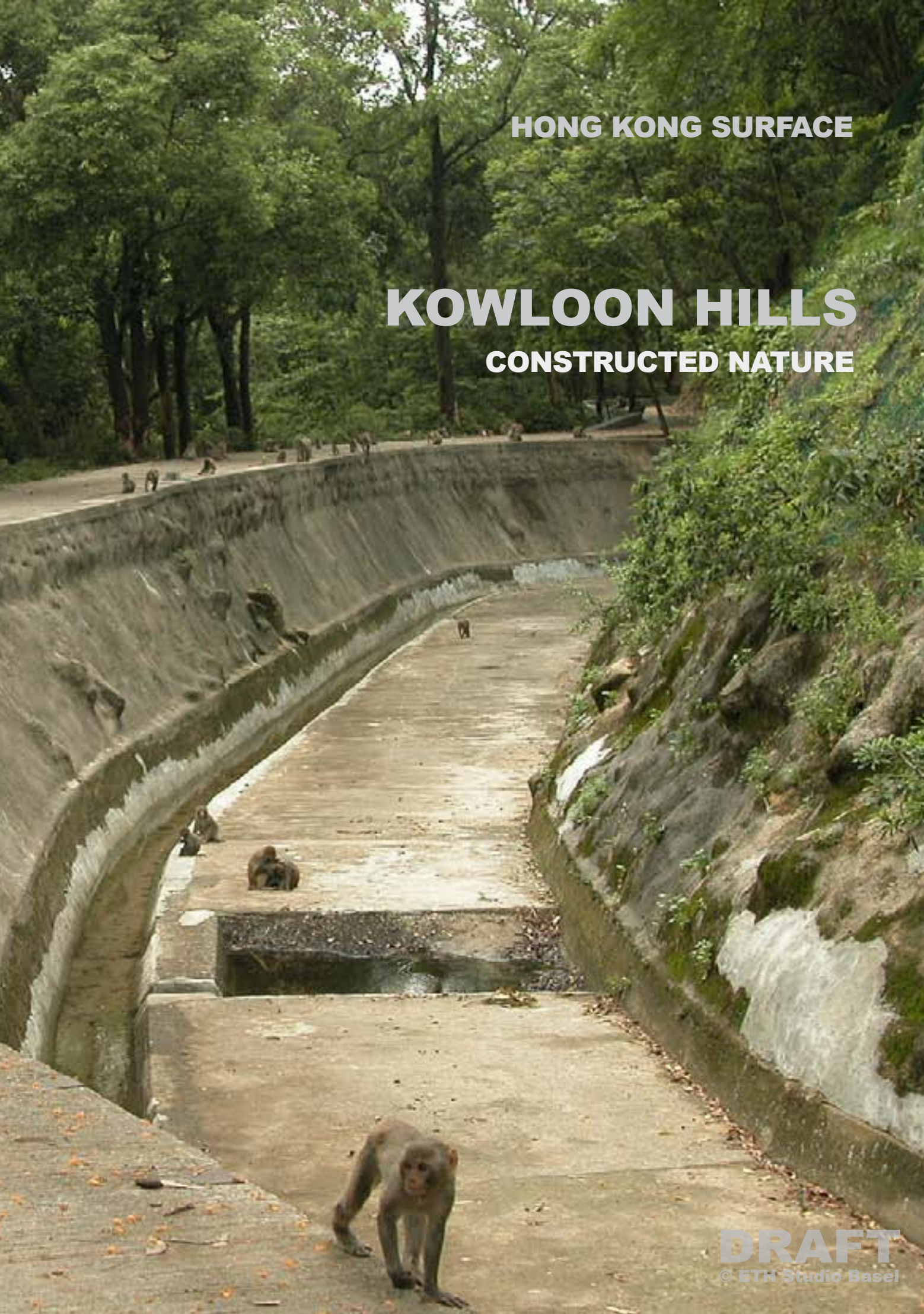


HONG KONG SURFACE

KOWLOON HILLS

CONSTRUCTED NATURE



ETH Studio Basel Institut Stadt der Gegenwart

Roger Diener Marcel Meili

Emanuel Christ Simon Hartmann John Palmesino Nelson Tam

Nele Dechmann Sascha Mathis

June 2004

KOWLOON HILLS

CONSTRUCTED NATURE

TOPOGRAPHY

The Hong Kong Condition

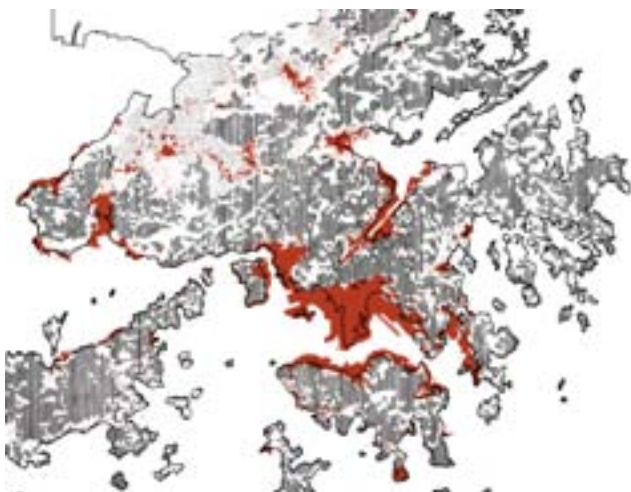
Most of Hong Kong's land is either liable to flood or too steep to build on. How can a city of 7 million inhabitants react to these physical limitations?

PHYSICAL LIMITATIONS



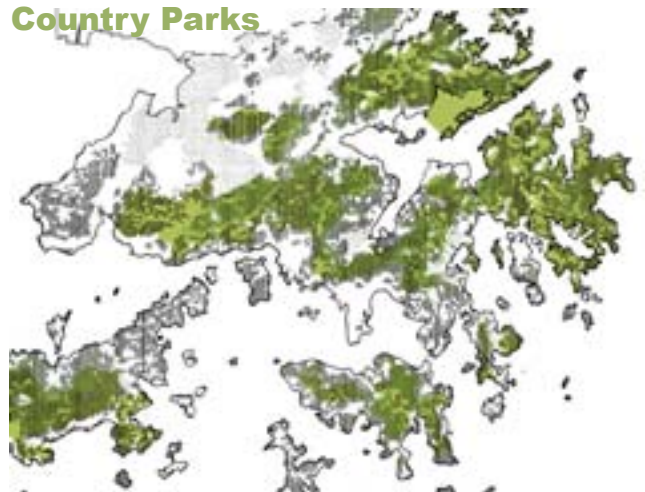
Source: A Geography of Hong Kong, Oxford Press, 1986

Built-on Area



Source: Land Use Map, 2002

Building-free Zone Country Parks



Source: Land Use Map, 2002



Source: Internet



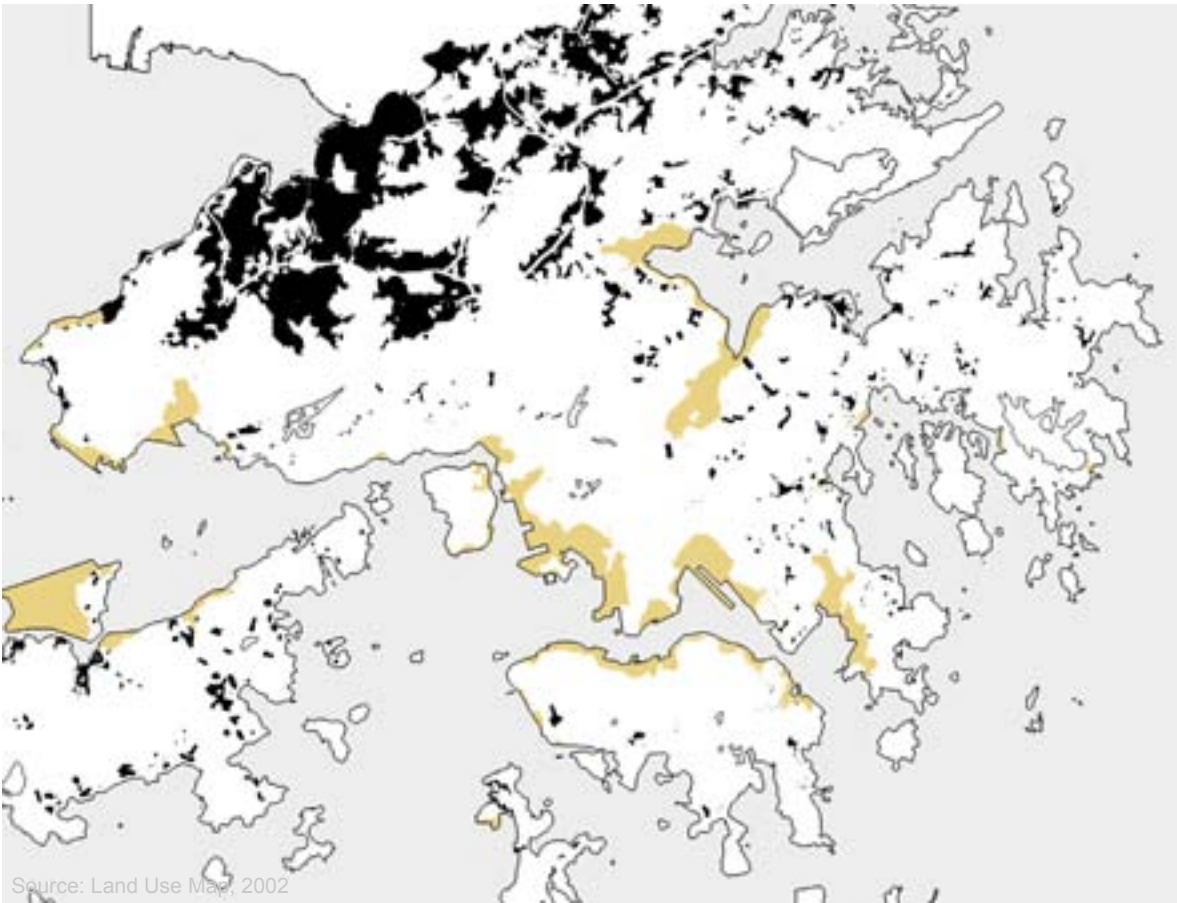
ARTIFICIAL SURFACE



Actual Coastline

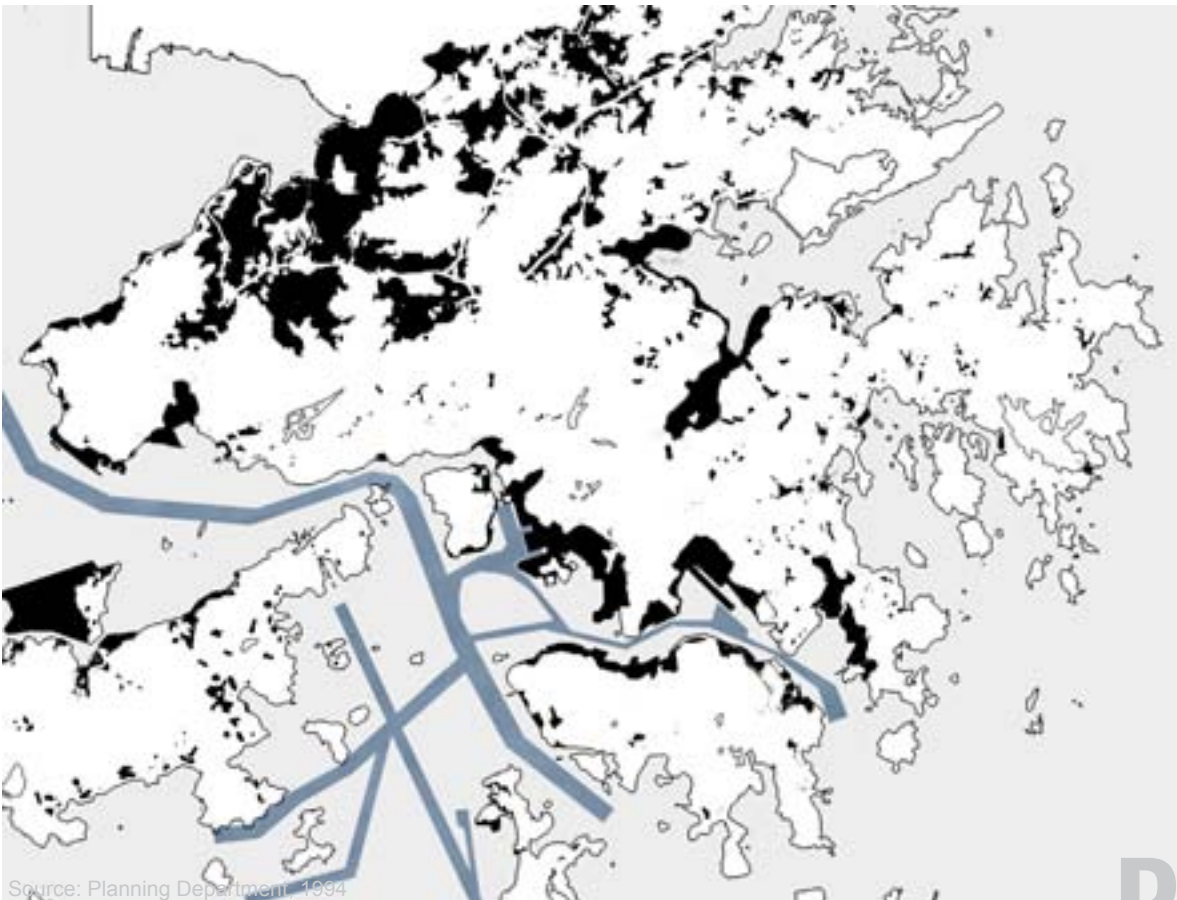


Arable Land

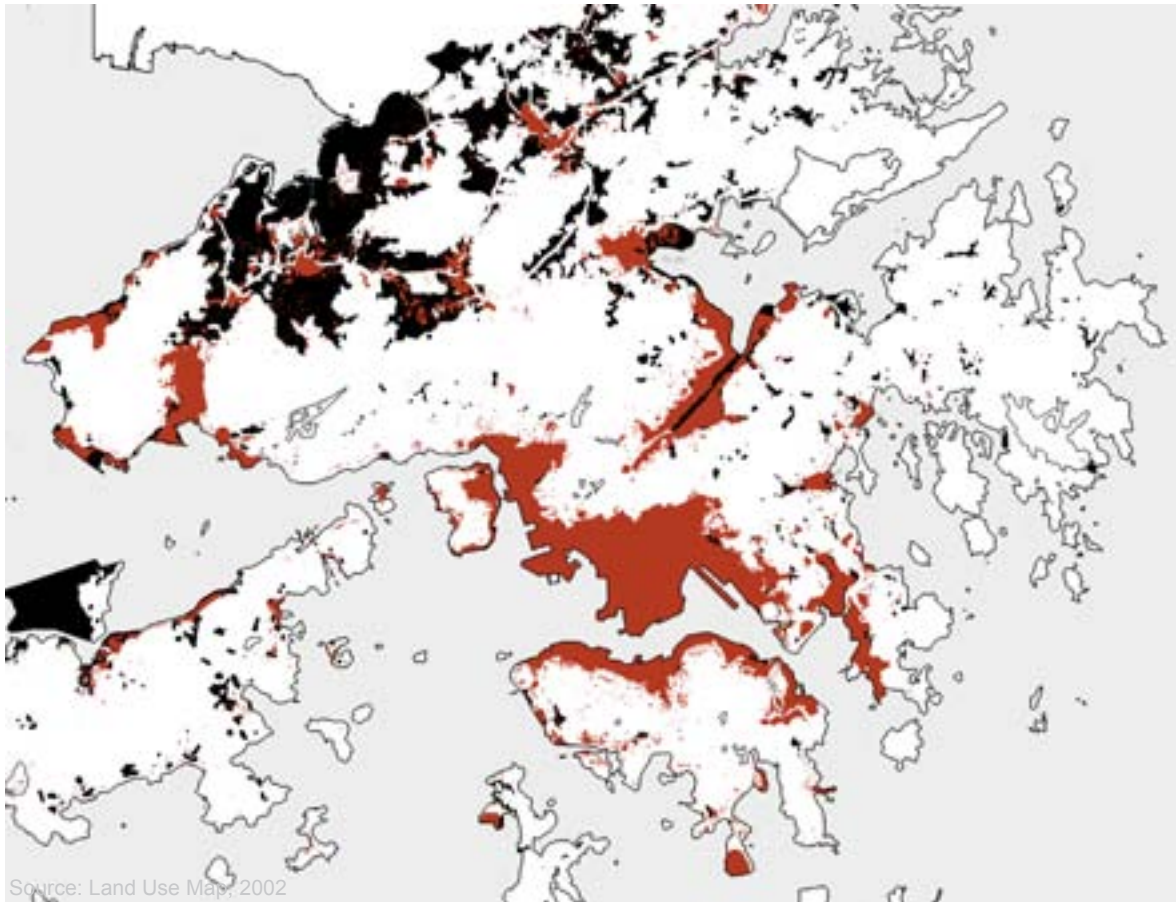


Source: Land Use Map, 2002

Reclamation

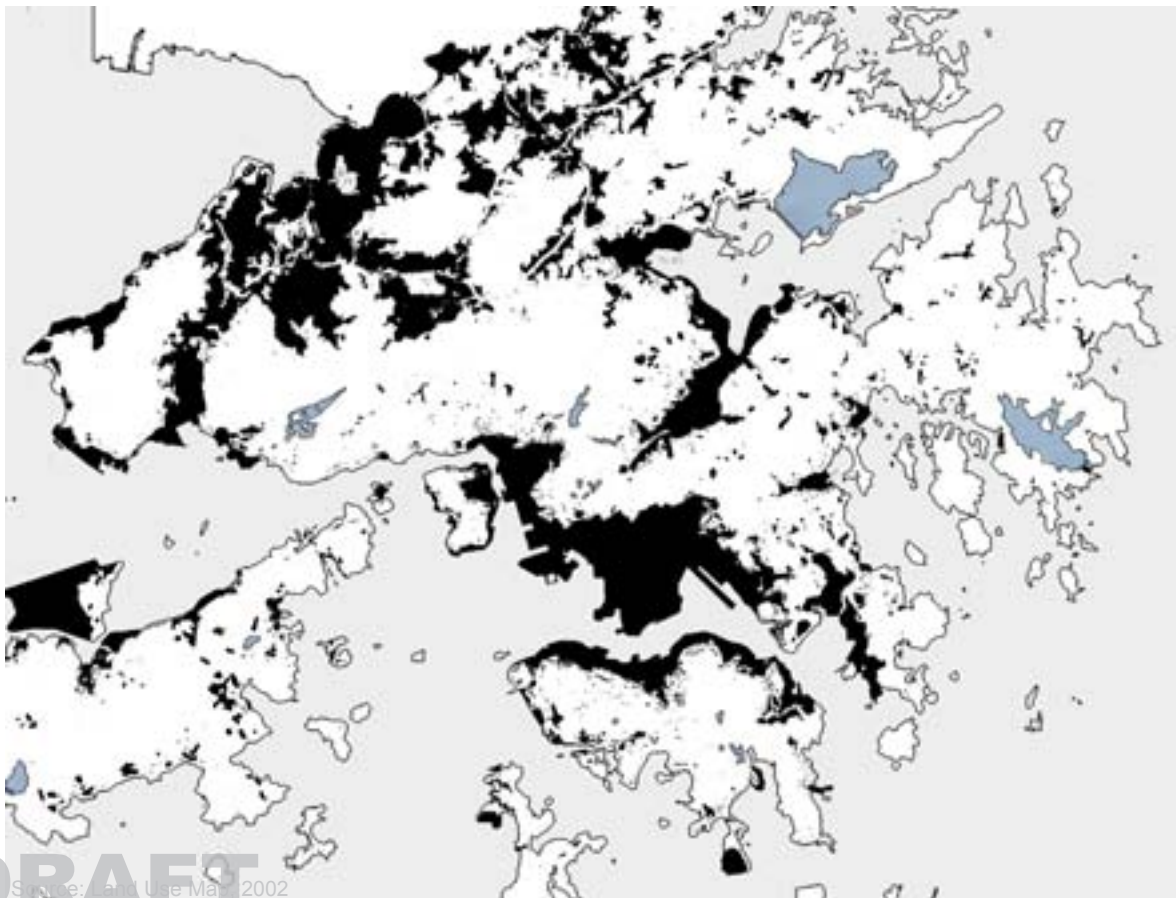


Source: Planning Department, 1994



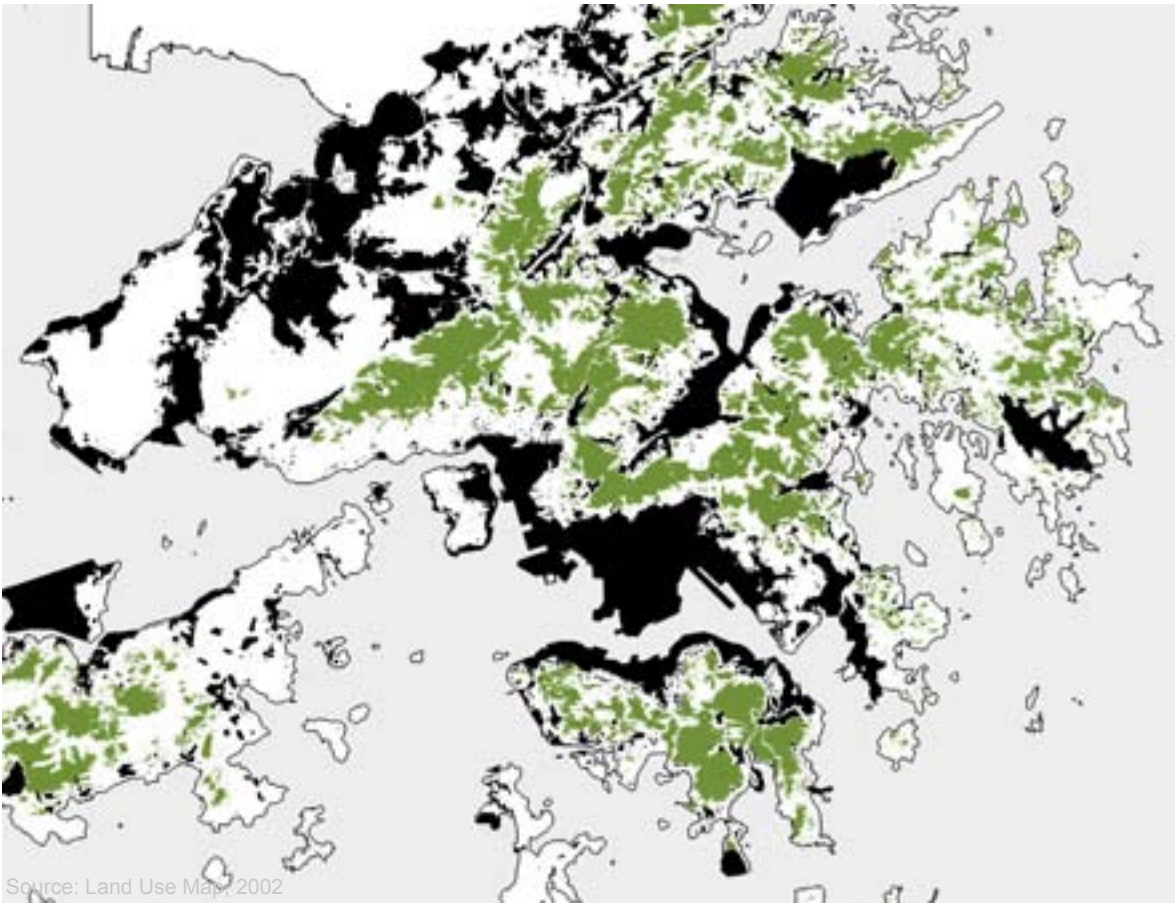
Source: Land Use Map, 2002

Built-on Area



Source: Land Use Map, 2002

Reservoirs



Source: Land Use Map, 2002

Forest



FOREST AND COUNTRY PARKS

Planned Nature

from 5000 B.C.: slash and burn culture

1841: eroded badlands in Hong Kong

1870-1940: beginning of British afforestation

1941-1945: hills stripped of trees under Japanese occupation

1945: Hong Kong treeless once more

1950: reforestation

1976: foundation of Country Parks



Forest 1841



Forest 1954

Source: A Geography of Hong Kong, Oxford Press, 1986



Forest 2003

AFTER WORLD WAR II



Source: Living Nature; Agriculture, Fisheries and Conservation Department

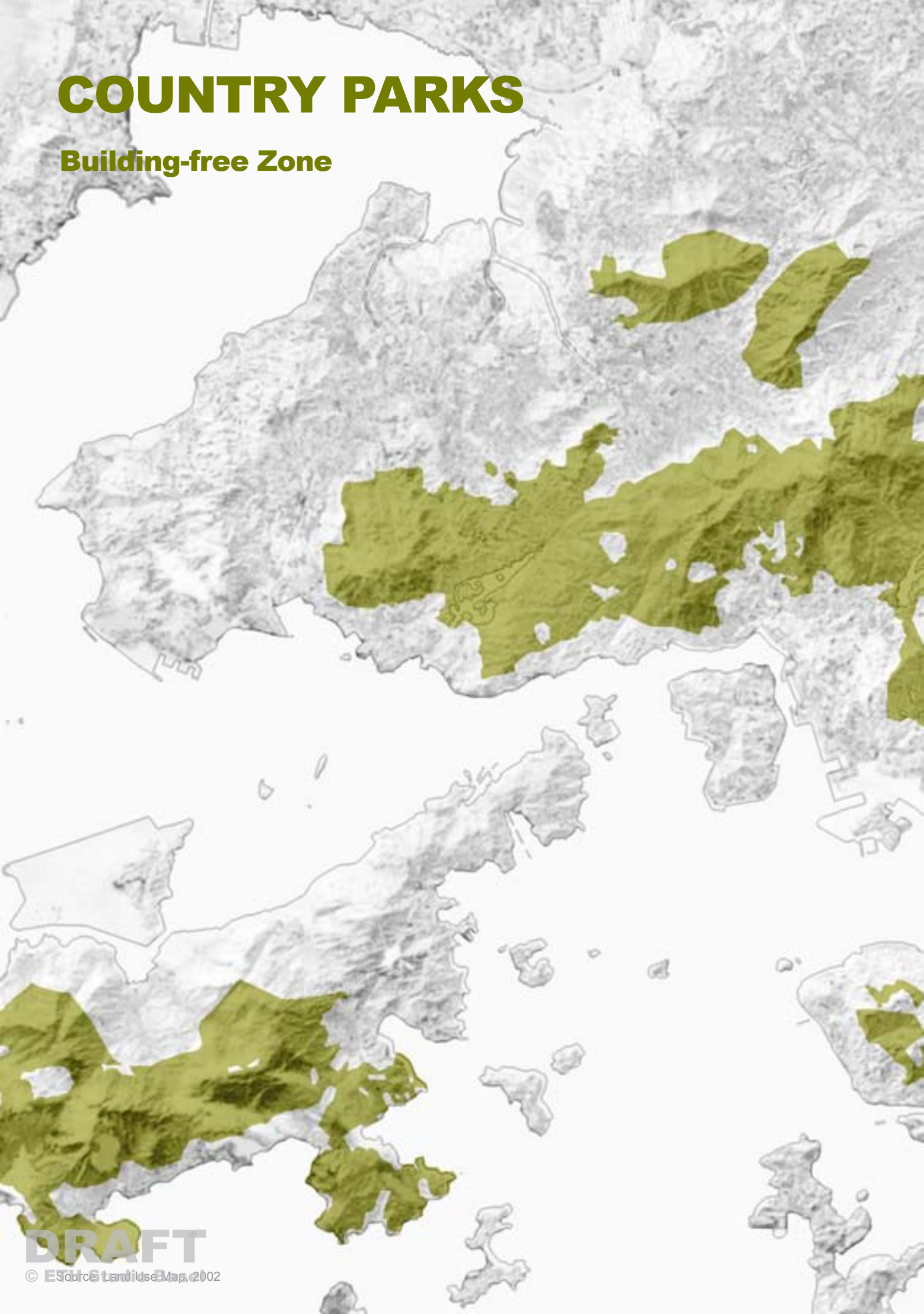
2004



DRAFT
© ETH Studio Basel

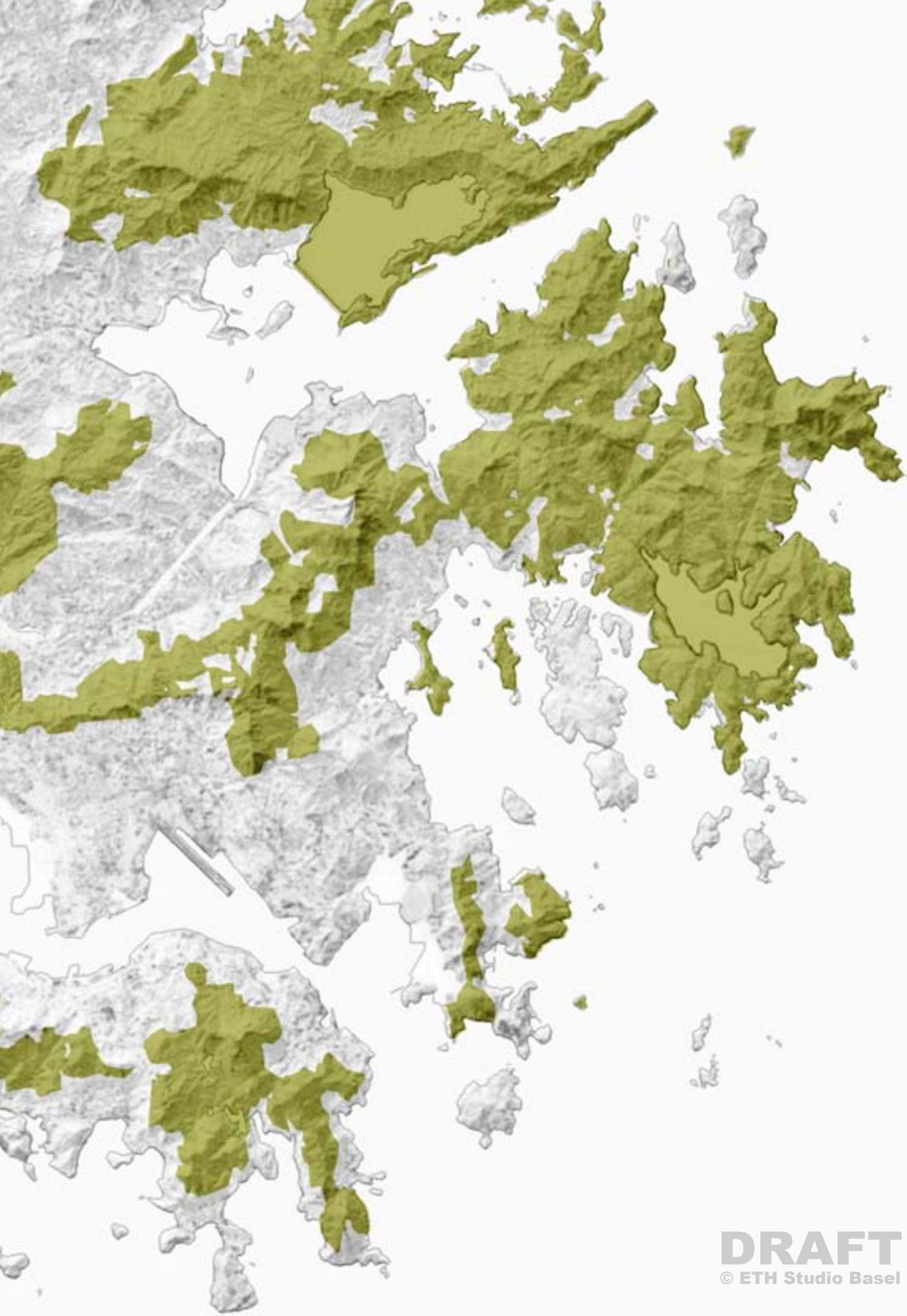
COUNTRY PARKS

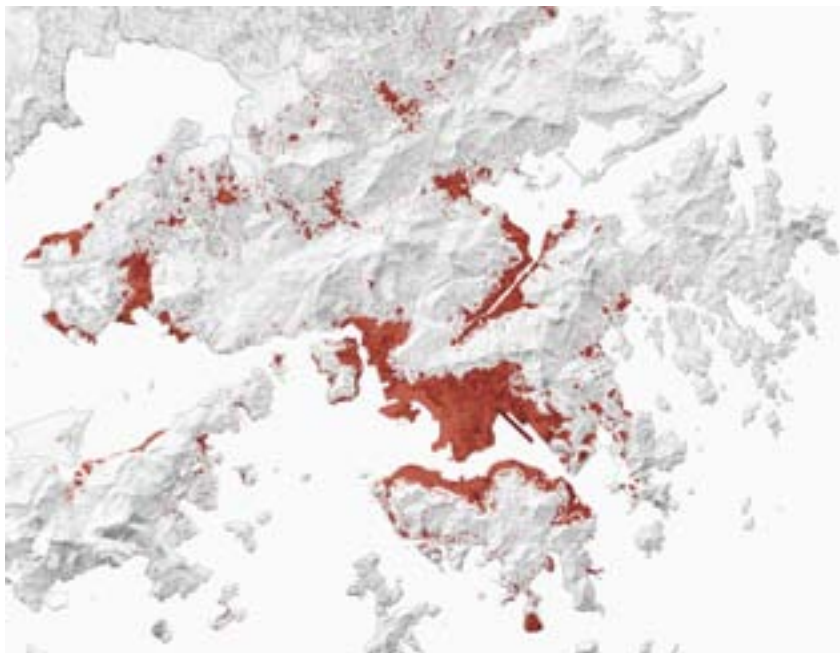
Building-free Zone



DRAFT

© ESRI and user Map, 2002





Urban Area



Major Roads



Roads & Parks

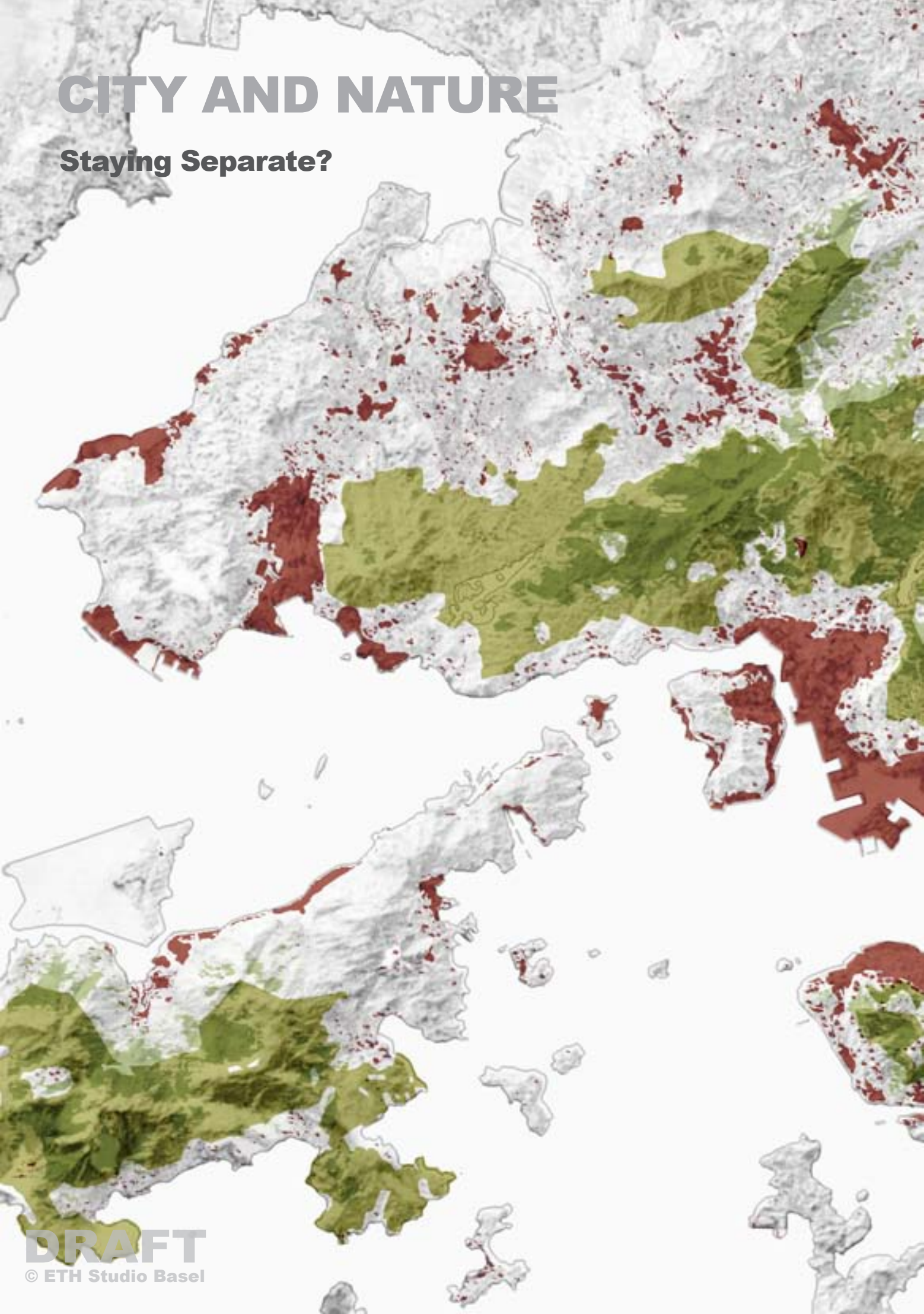


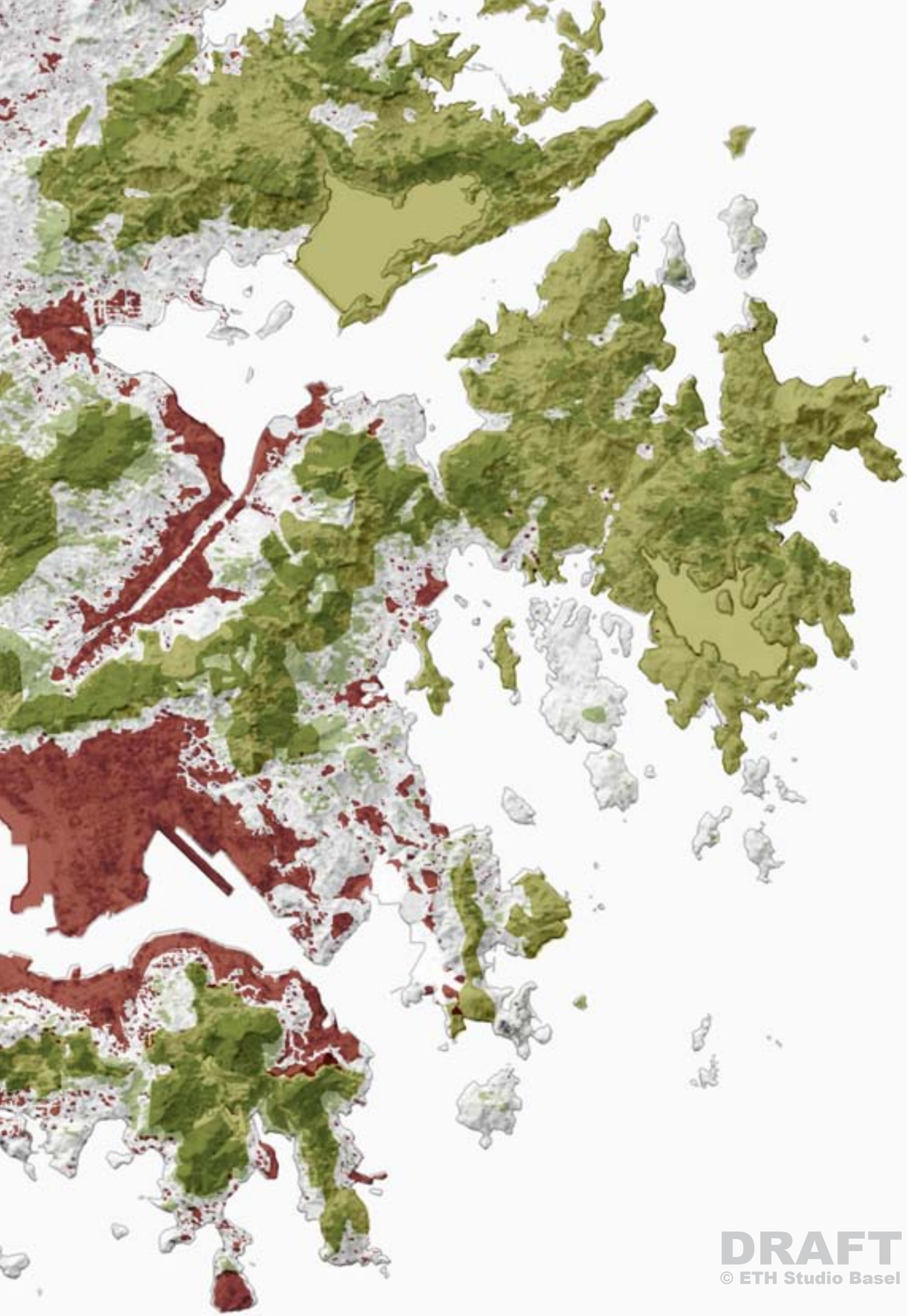




CITY AND NATURE

Staying Separate?





CITY AND NATURE

Interlocking





KOWLOON HILLS

Taking a close look at a piece of green surface

KOWLOON HILLS

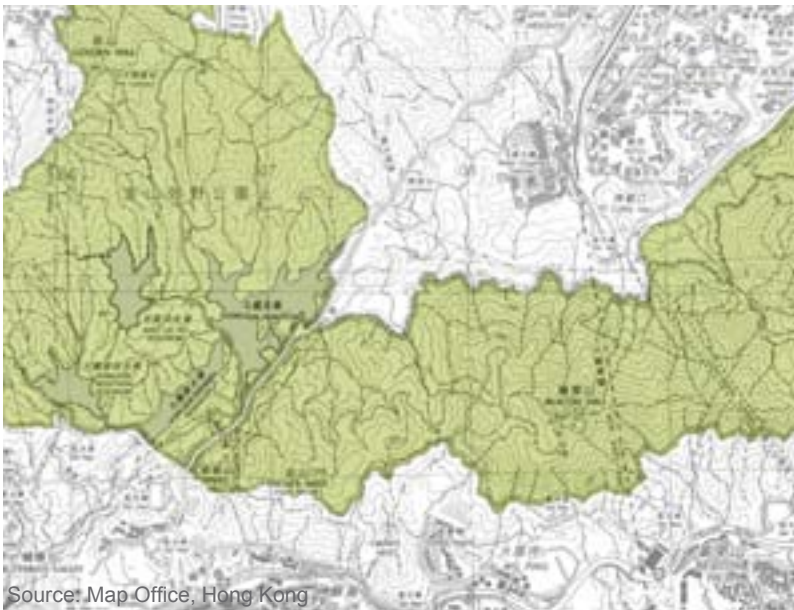
BETWEEN HONG KONG AND NORTH EAST NEW TERRITORIES

FORMER MAIN GATHERING GROUND FOR FRESH WATER

NOWADAYS RECREATION AREA CLOSEST TO THE CITY



Hong Kong Area



Kowloon Hills



BARRIER TO THE CITY

Source: Historical Atlas of Hong Kong



-KOWLOON CITY

KOWLOON HILLS

DRAFT
© ETH Studios Basel

COUNTRY PARKS

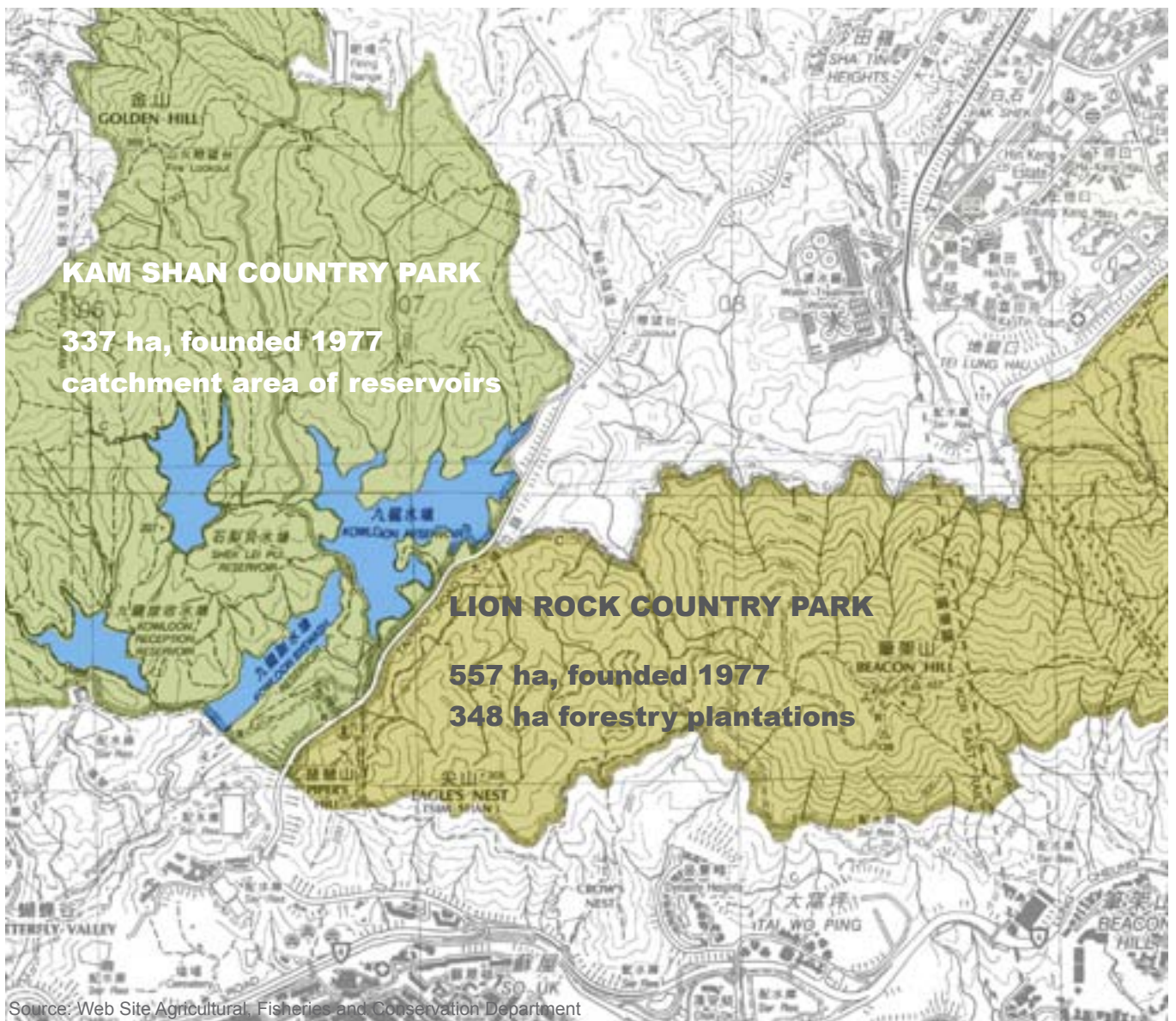
Ecotourism

12.1 MILLION COUNTRY PARK VISITORS 2003/2004

1 MILLION TREES PLANTED IN COUNTRY PARKS 2003/2004

RAIN SHELTERS, BARBECUE SITES AND MORNING WALKER GARDENS

**LONG-TAILED MACAQUES RELEASED IN 1920
SPECIAL PERMISSION REQUIRED FEEDING**





SPECIAL FEEDING PERMISSION



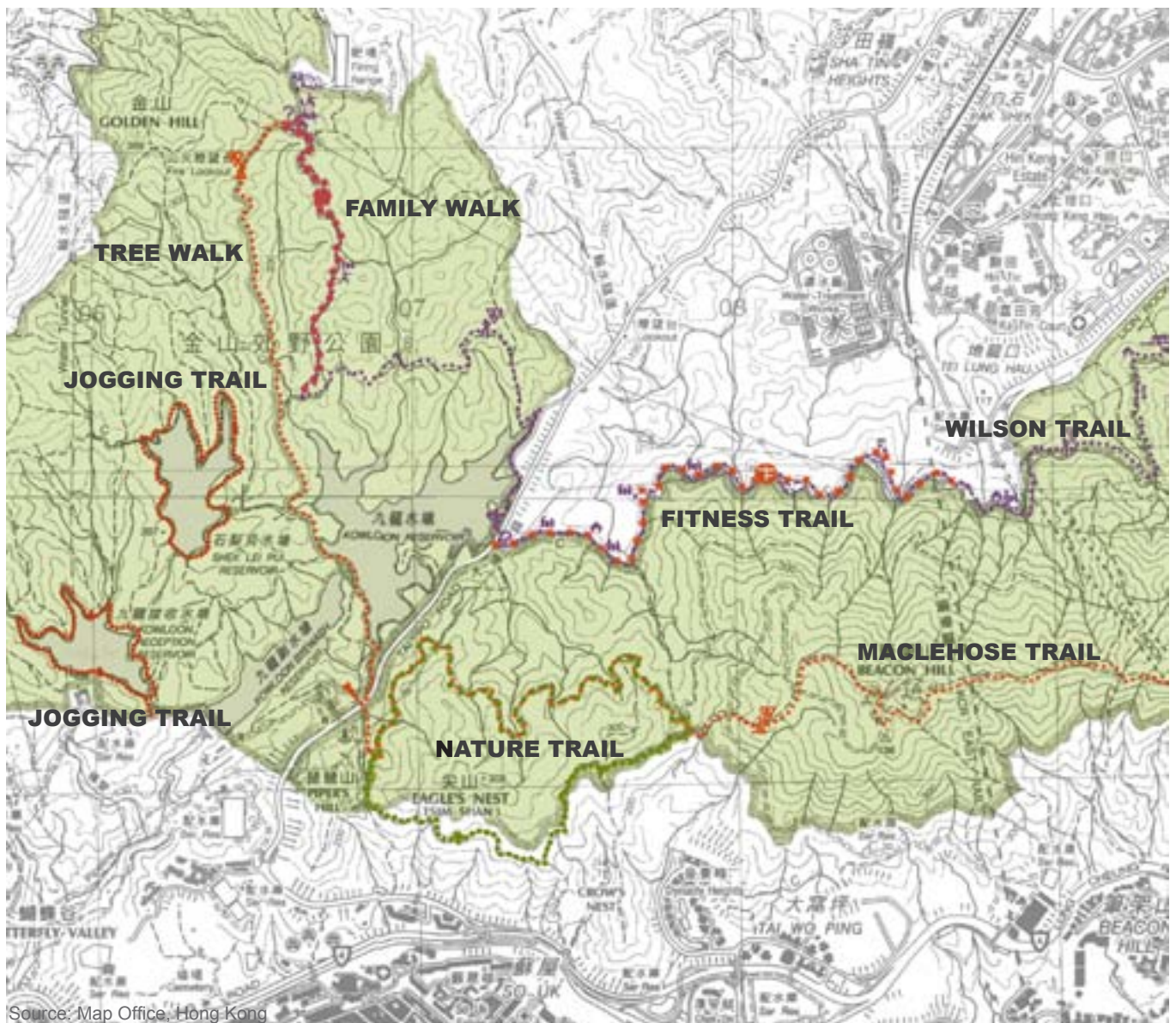


TRAILS AND WALKS

THEMED TRAILS AND WALKS

INTERPRETATIVE SIGNS

ACTIVITIES: MORNING WALKING, HIKING, JOGGING, EDUCATION



FITNESS TRAIL



GUIDANCE



DRAFT
© 2011 [unreadable]

EARLY TOURISM

Hiking Routes 1896



The TOURISTS GUIDE to HONG KONG
 with **SHORT TRIPS to the MAINLAND of CHINA**
REFERENCES

⊙ Mandarin Station. ⊙ Village. ⊠ Market Place. ⋯⋯⋯ Routes.

PROGRAMMES

Nº 1. To Tsui Wan, and return Via Kowloon Gap, and City about Miles 10

2 - Castle Peak	Un-tai	Cap-sui-moon	15	
3 - Tai-Mo-Shan	Lam-tong-to	Tsui-wan	8	
4 - Deep-Bay	Castle Peak		8	
5 -	Ma-on-Kong	Telegraph-pass	15	
6 -	Pit-heung	Tai-mo-shan-pass	16	
7 -	Black-peak	Shatau-Shek-ha	Sham-chun	20
8 -	Mt. Ouyang	3 day trip	return direct.	25

Distances in English miles.

LANTAU ISLAND

COMPILED and DRAWN BY R. G. HURLEY.



Sham-chün

MIRSBAY

CHUNGHUEI

KAT-LUNG-SHING

DRAFT
© ETH Studio Basel

Stone Cutters 14

West Point

Quarry B

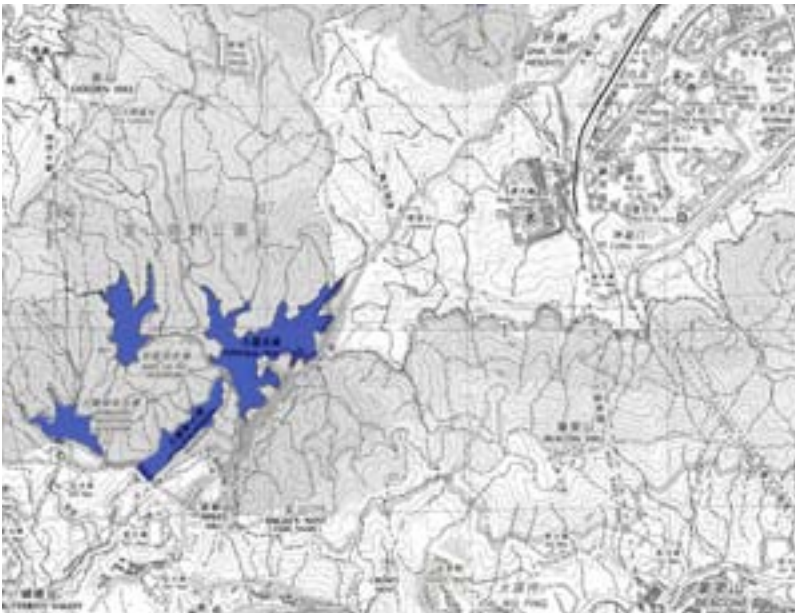
VICTORIA HONG KONG

KOWLOON RESERVOIRS

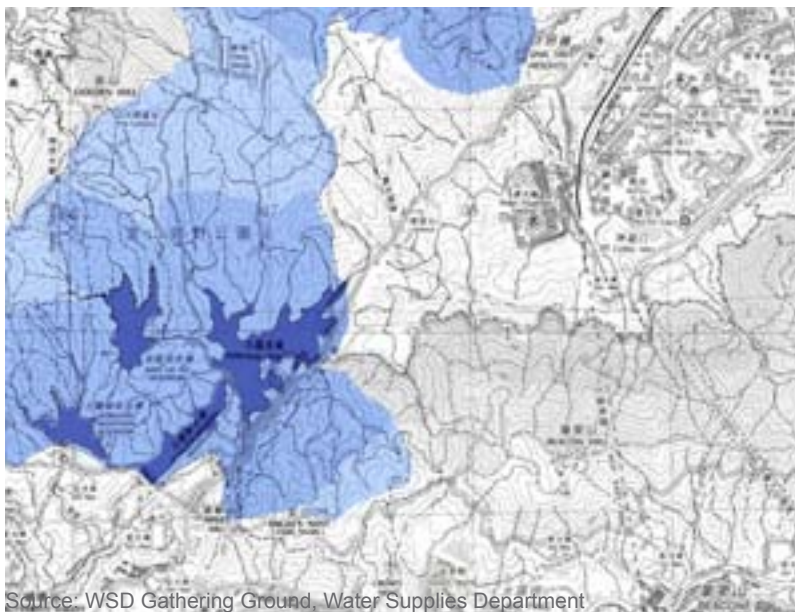
FROM 1900: KOWLOON'S MAIN SOURCE OF FRESH WATER

TODAY: LITTLE PRACTICAL USE

KEPT FOR HISTORICAL REASONS



Fresh Water Reservoirs



Direct Gathering Ground

Source: WSD Gathering Ground, Water Supplies Department



ARTIFICIAL INTERVENTION

**1901 CONSTRUCTION OF EARTH DAM
1922 REPLACED BY ROCK DAM**



GENERATED NATURE

KEPT FOR SCENIC QUALITIES

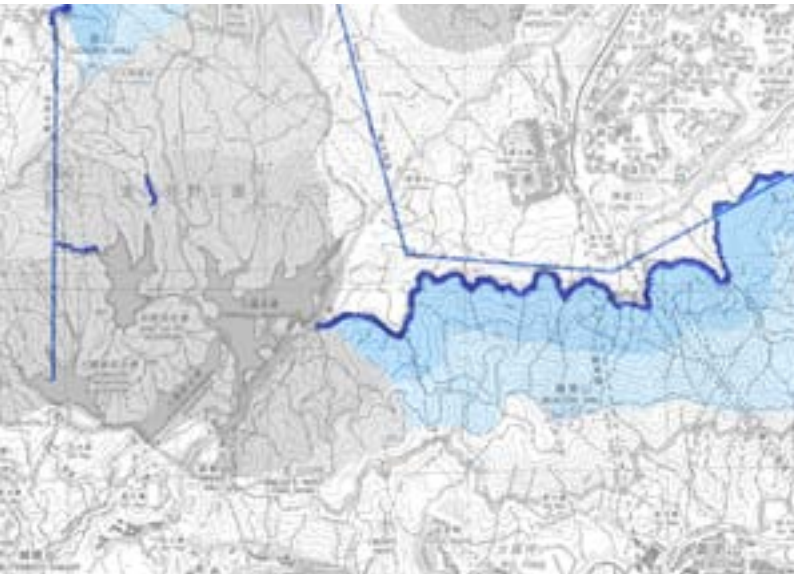




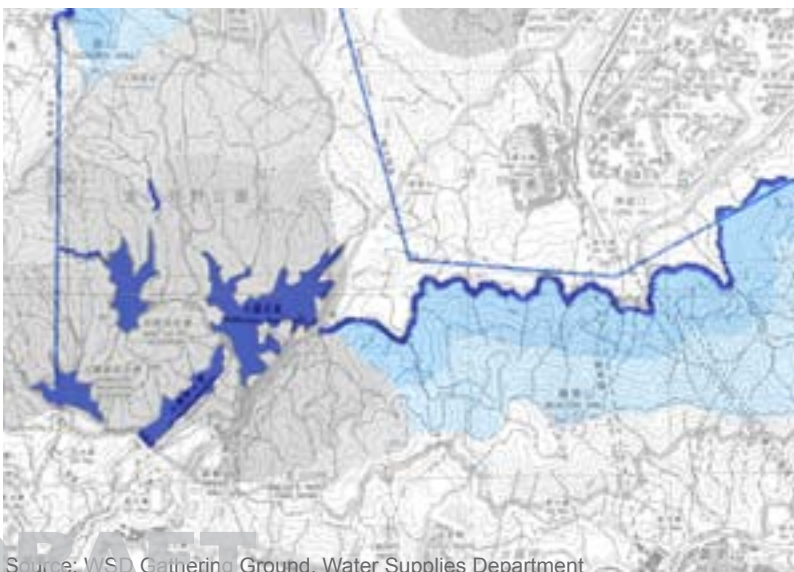
CATCHWATER



Catchwater & Tunnels



Indirect Gathering Ground



Fresh Water Reservoirs



CATCHWATER
LABELLED AS FITNESS TRAIL



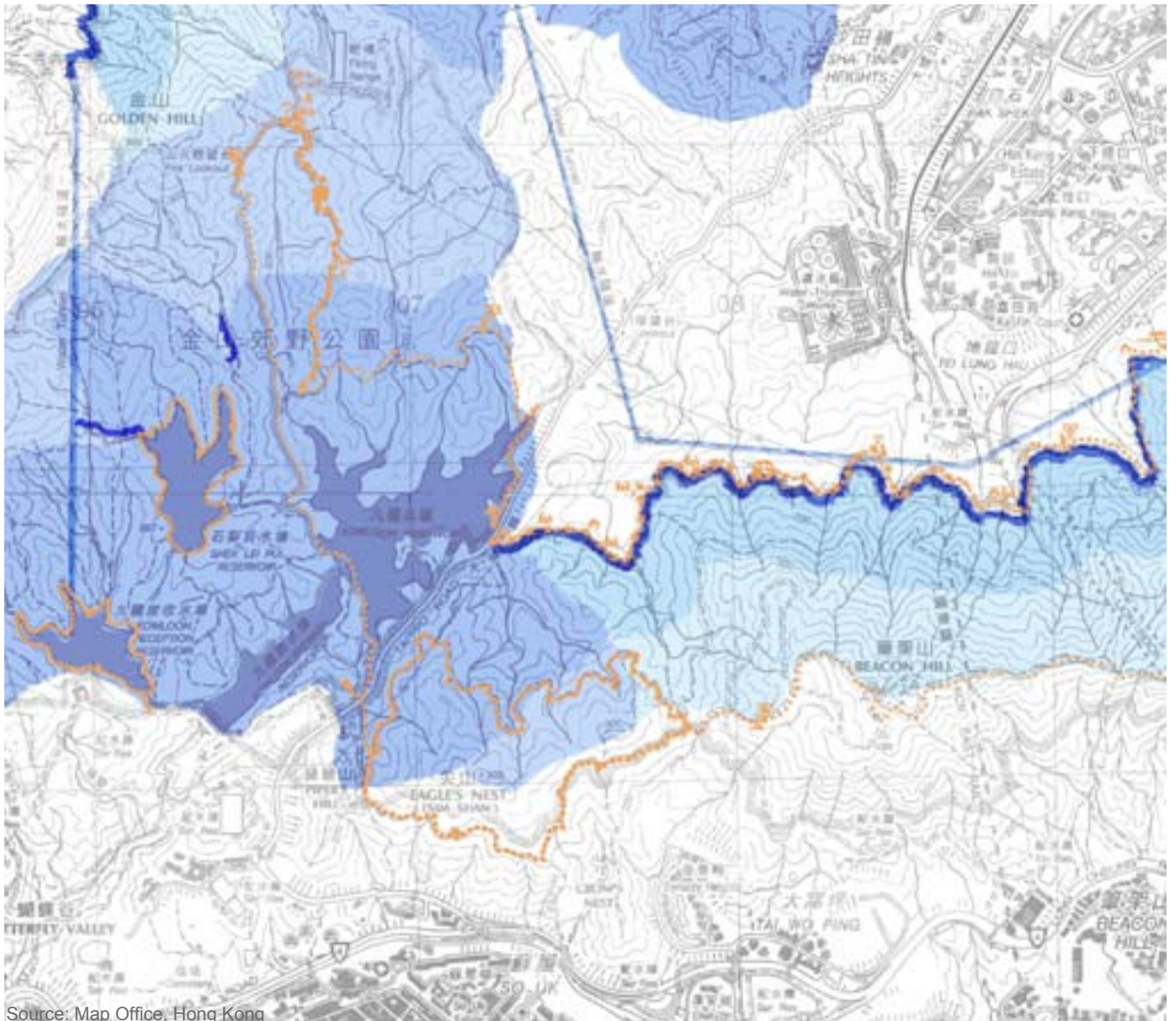
GATHERING FROM THE TOP





MULTI-PURPOSE USE

Catchwater and Trails



Source: Map Office, Hong Kong



**JOGGING TRAIL
USED FOR CATCHWATER MAINTENANCE**



JOGGING TRAIL

SUPERPOSITION OF MATERIALS





SOURCES OF FRESH WATER

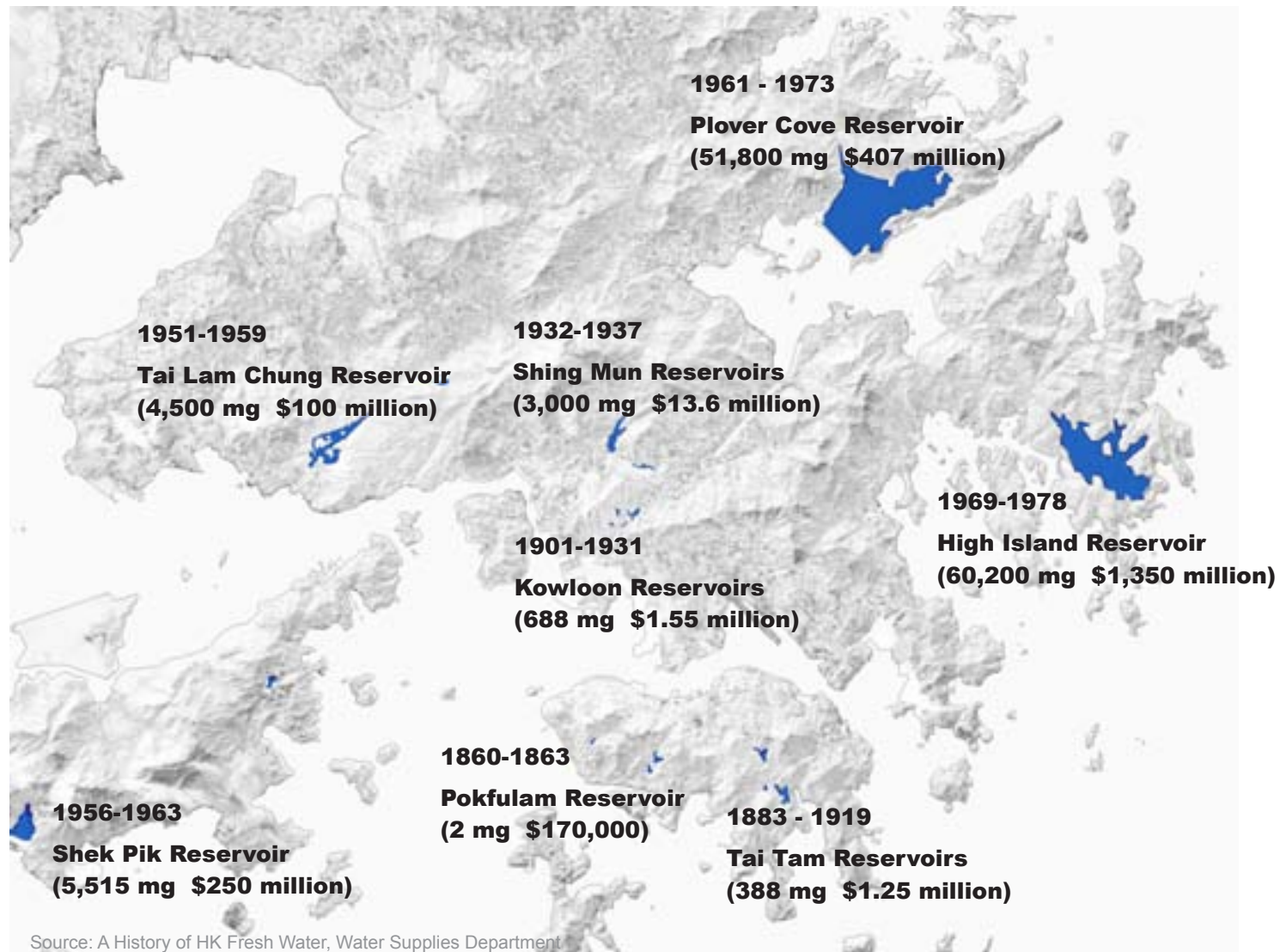
TOTAL HONG KONG AREA

80% SUPPLY FROM GUANGDONG, MAINLAND CHINA

20% RAINFALL FROM NATURAL CATCHMENT WITHIN THE HK AREA

TODAY SMALLER RESERVOIRS VIRTUALLY USELESS

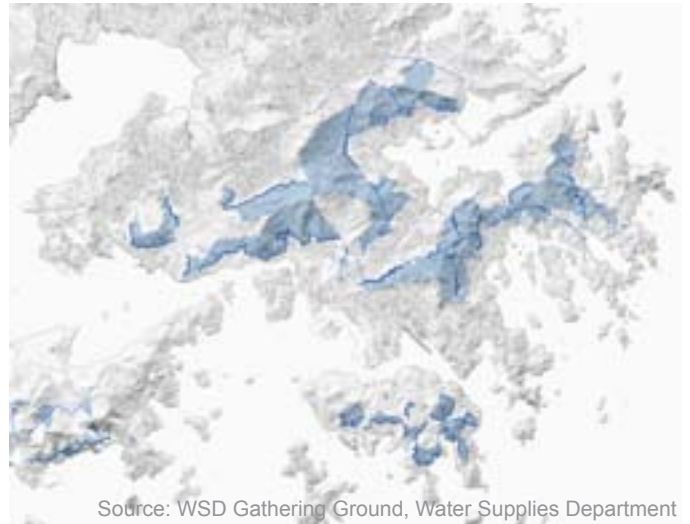
Fresh Water Reservoirs



Direct Gathering Ground



Indirect Gathering Ground



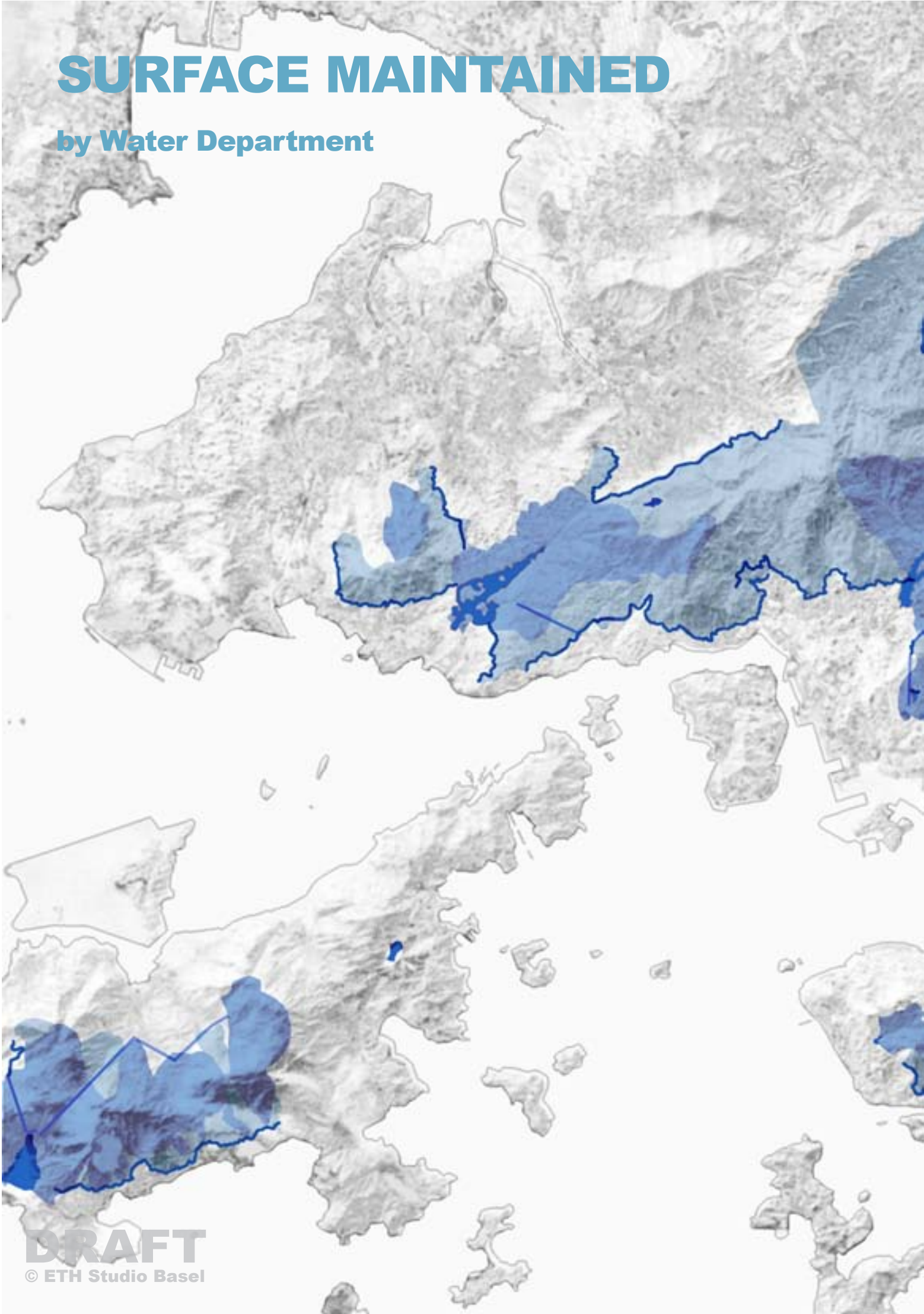
Source: WSD Gathering Ground, Water Supplies Department



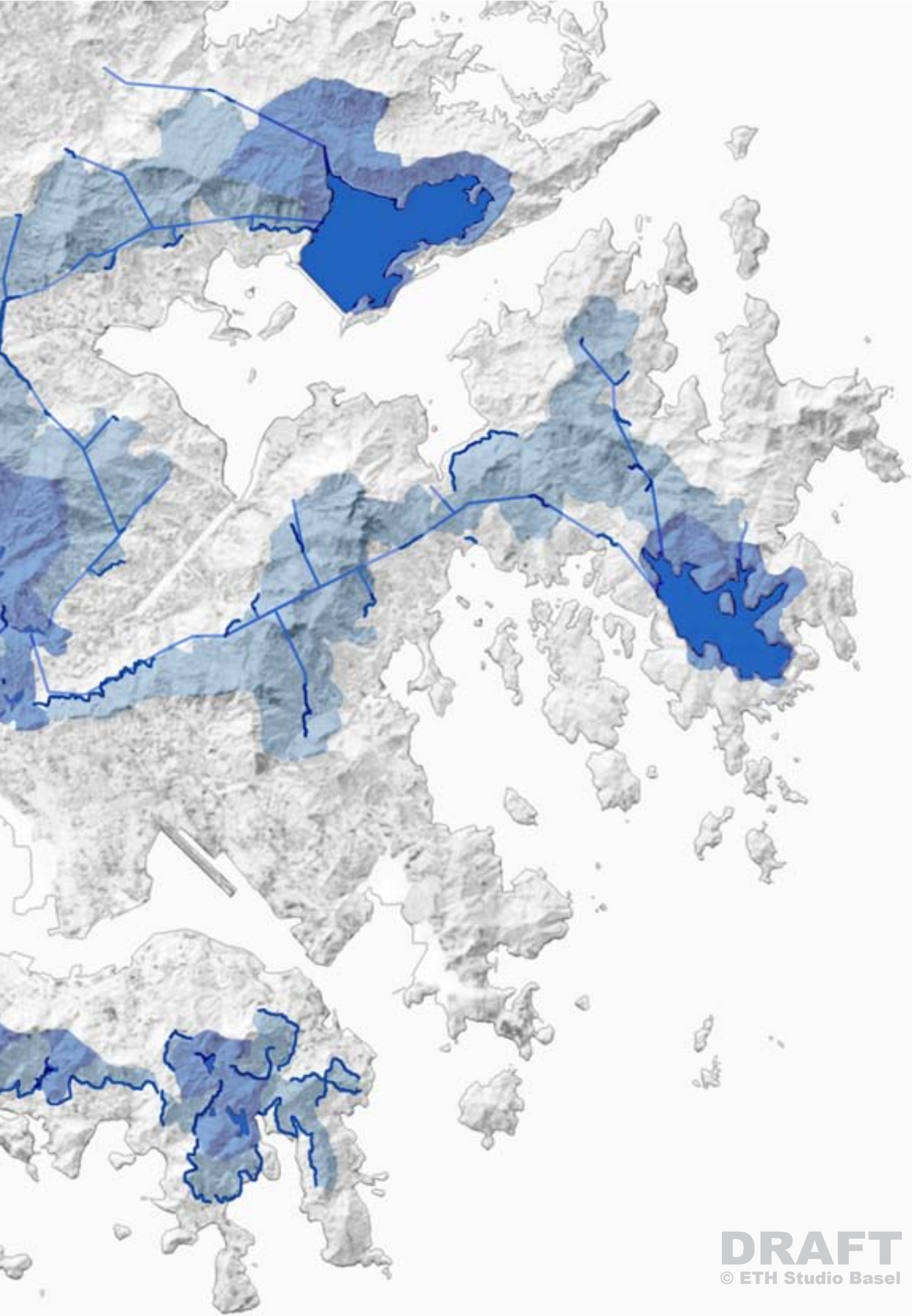
SHING MUN RESERVOIR OUTSIDE COUNTRY PARKS

SURFACE MAINTAINED

by Water Department



DRAFT
© ETH Studio Basel

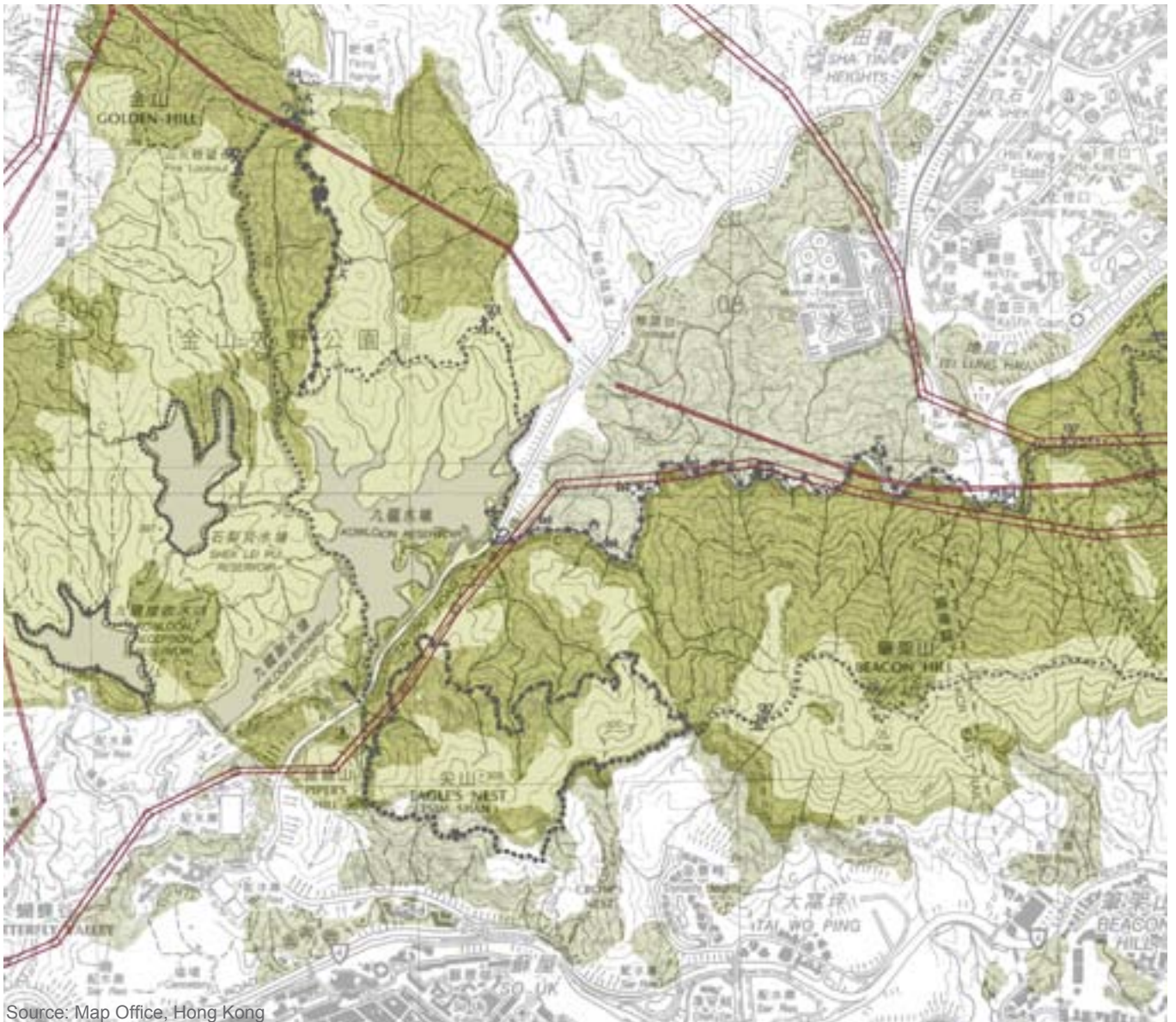


POWER LINE SYSTEM

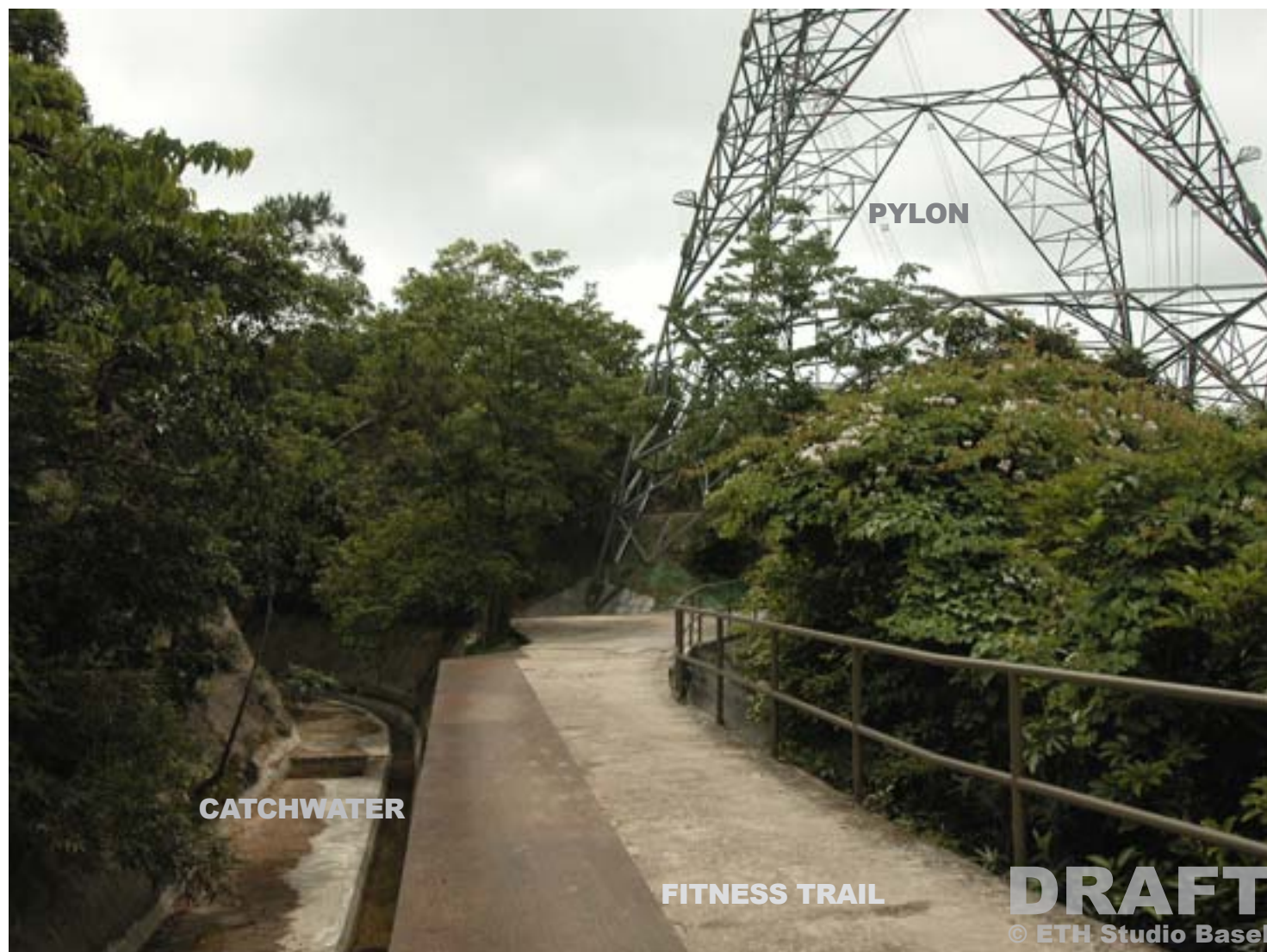
CONTROLLED BY PRIVATE COMPANIES

SUPERIMPOSED ON PROTECTED COUNTRY PARKS

PYLONS PLACED ALONG PATHS FOR EASY MAINTENANCE



Source: Map Office, Hong Kong



CATCHWATER

PYLON

FITNESS TRAIL

DRAFT
© ETH Studio Basel

LINEAR NETWORK



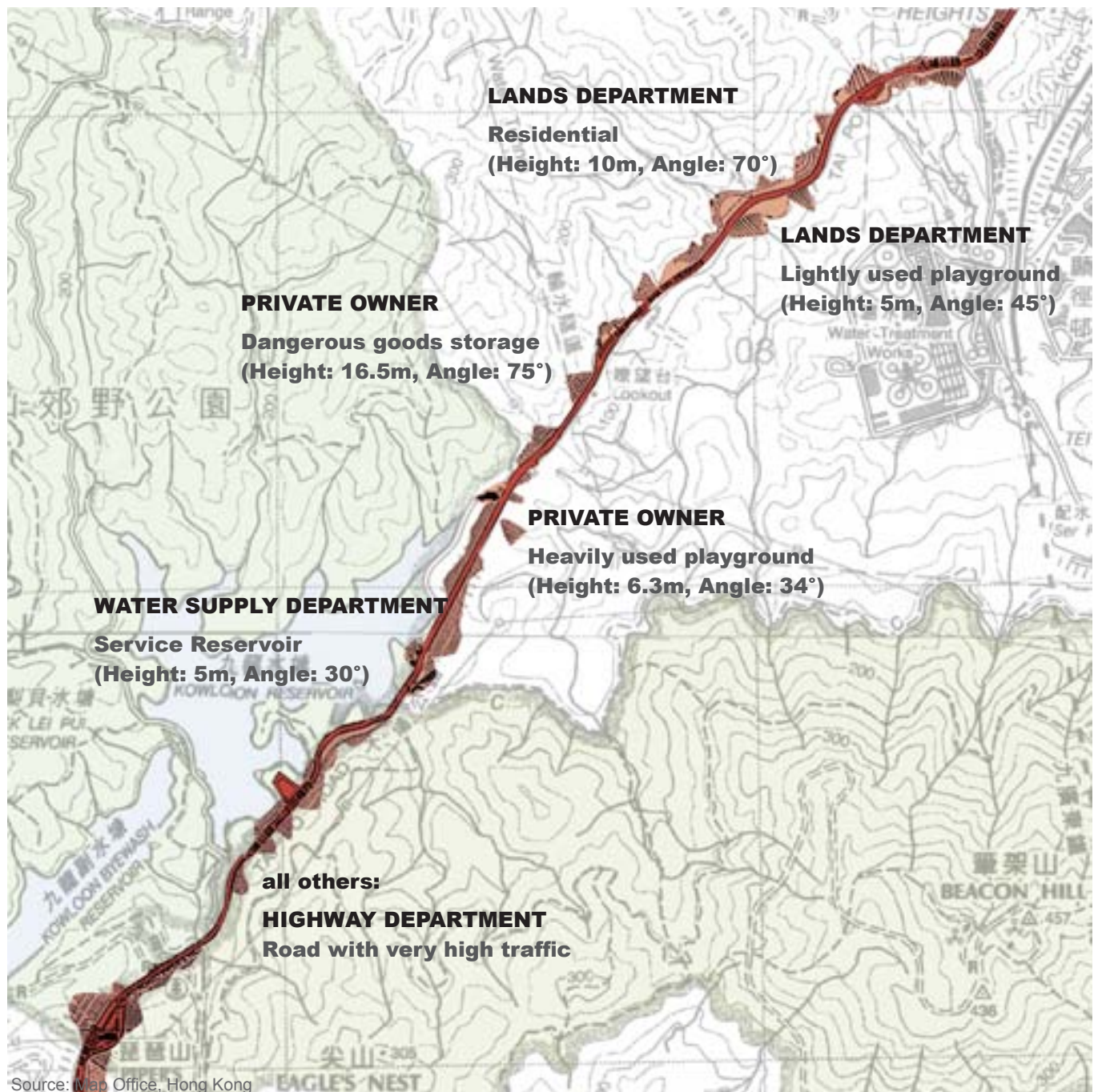


TAI PO ROAD

Attached Slopes

ONLY FORMER CONNECTION BETWEEN HONG KONG AND NEW TERRITORIES

Slope Maintenance Responsibility





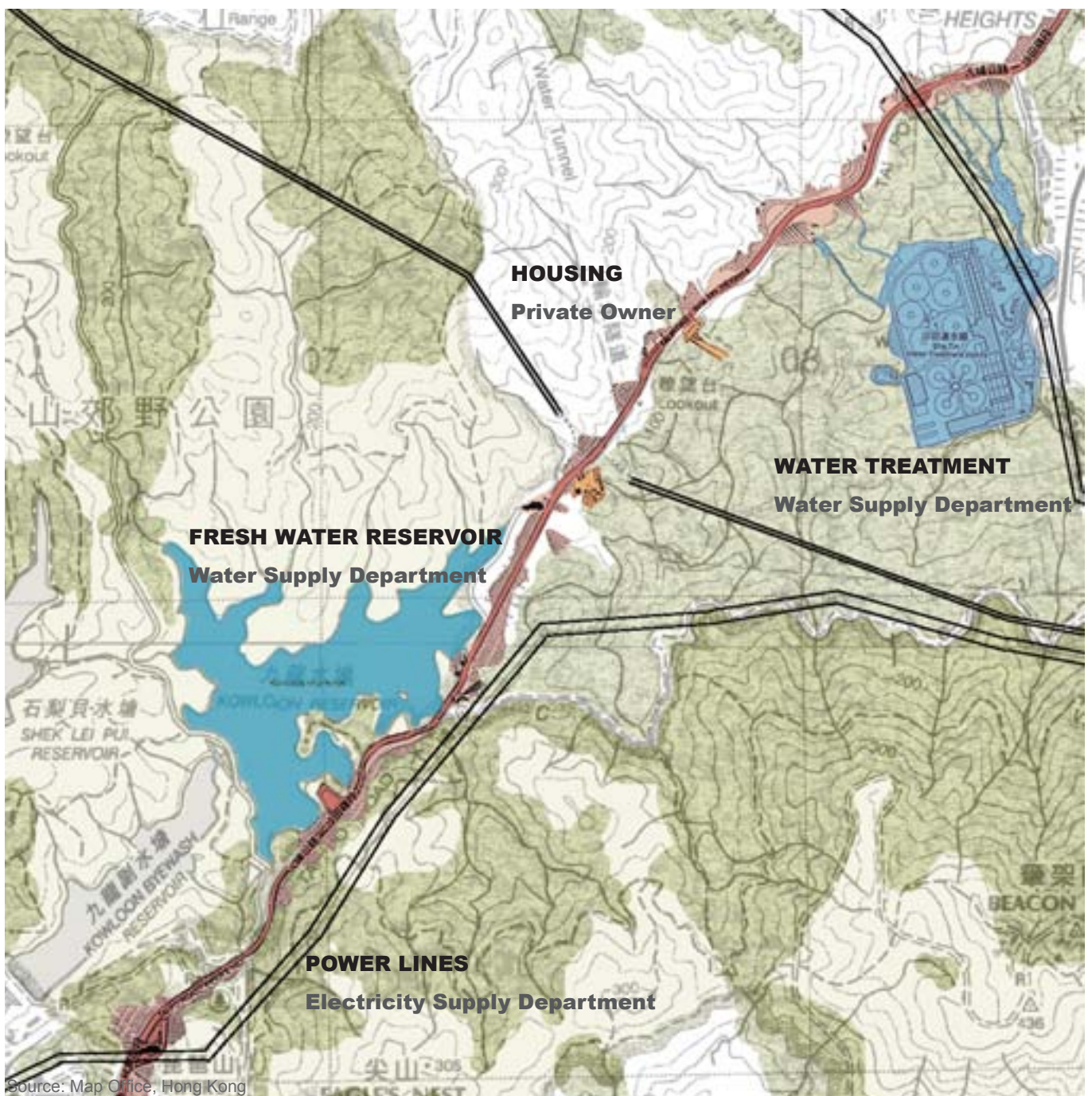
SLOPE MAINTENANCE



SLOPE REGISTRATION No. 1999-02202
S. N. S. N.

DEPARTMENT OF PLANNING DEPARTMENT
DEPARTMENT S. N. S. N.
S. N. S. N. 2-2020 #11

MULTI-FUNCTIONAL SURFACE



PRIVATE HOUSING



POWER LINE



SHA TIN WATER TREATMENT

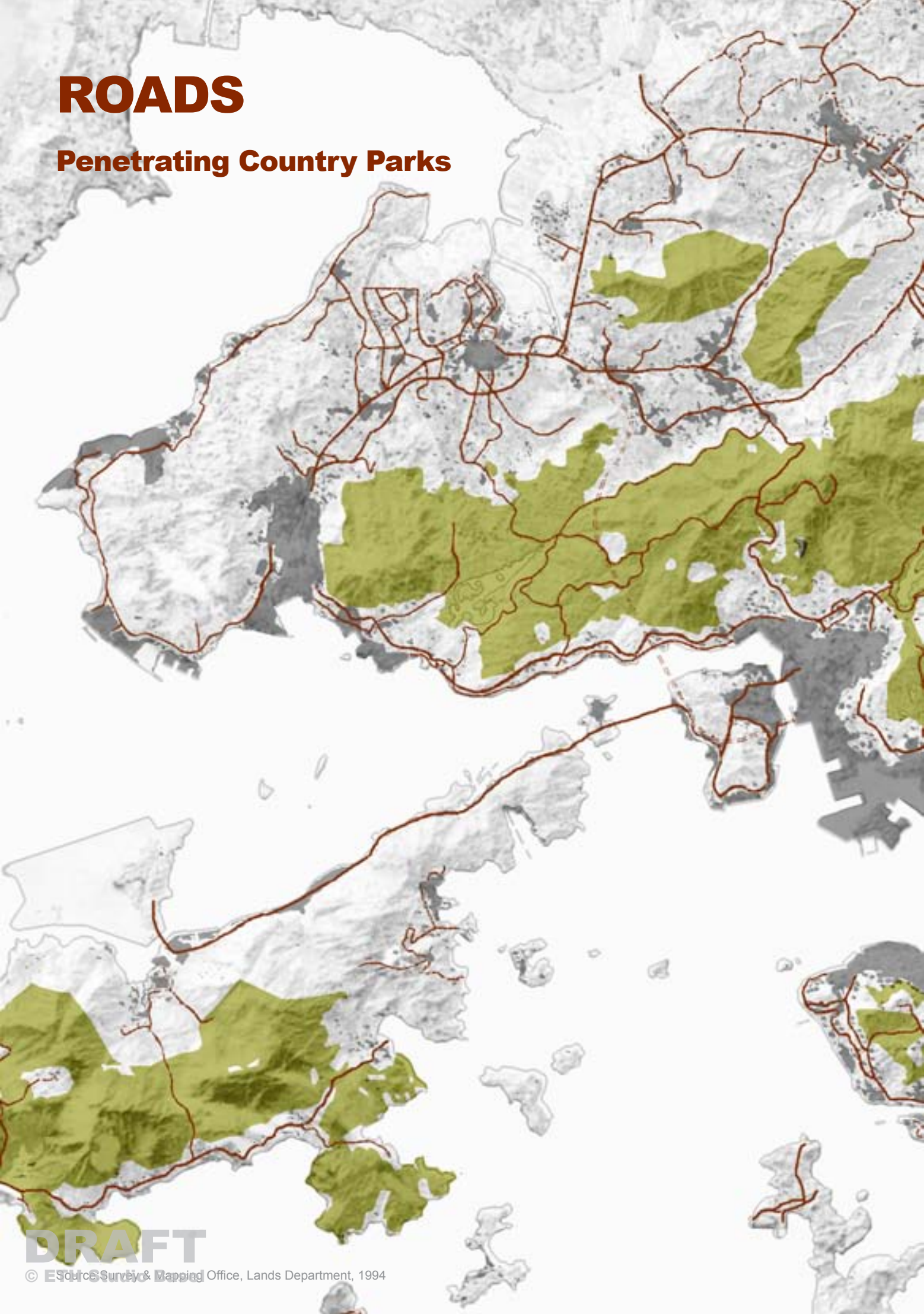
CUTTINGS





ROADS

Penetrating Country Parks



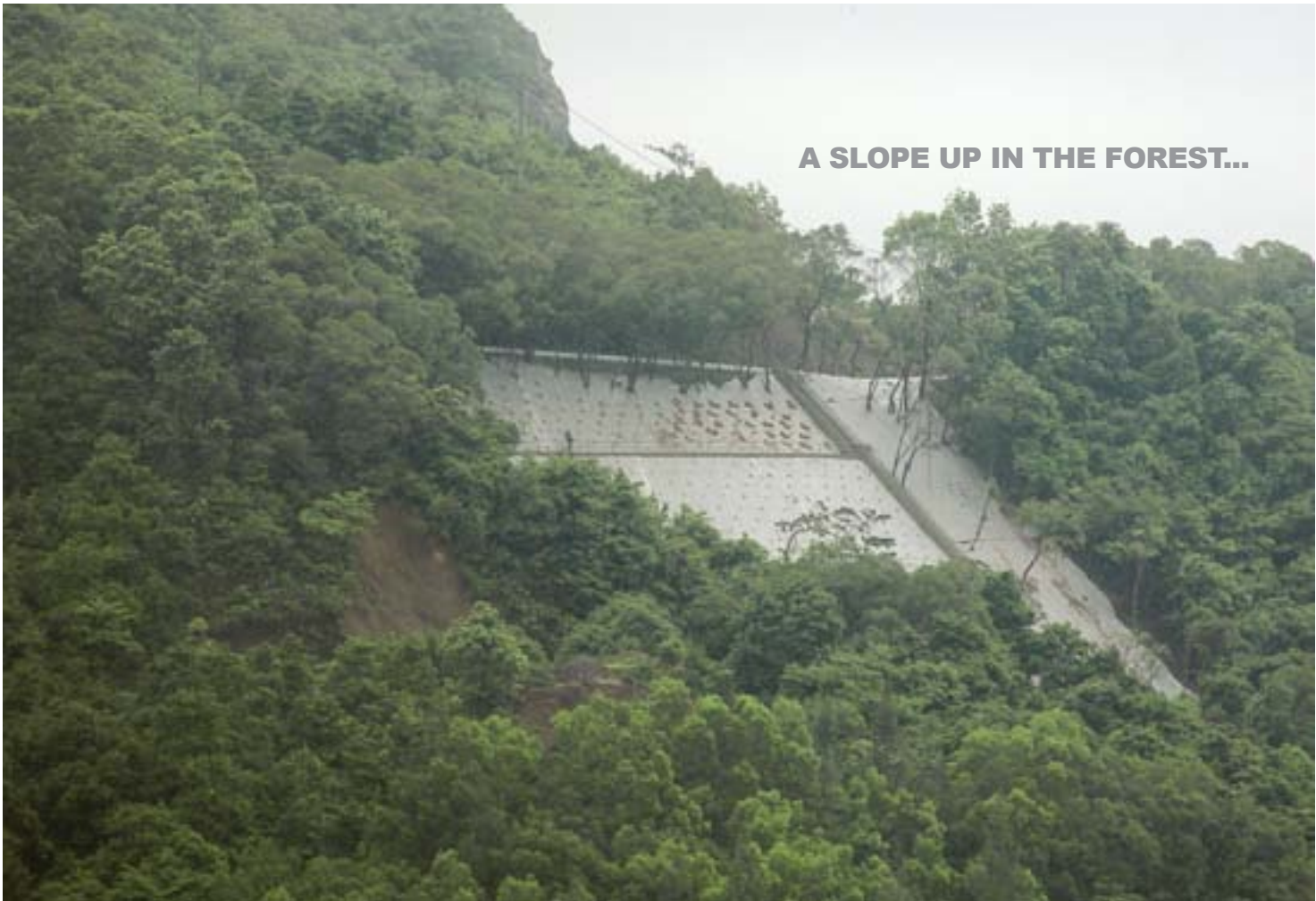
DRAFT



CITY AND NATURE

Interlocking





A SLOPE UP IN THE FOREST...



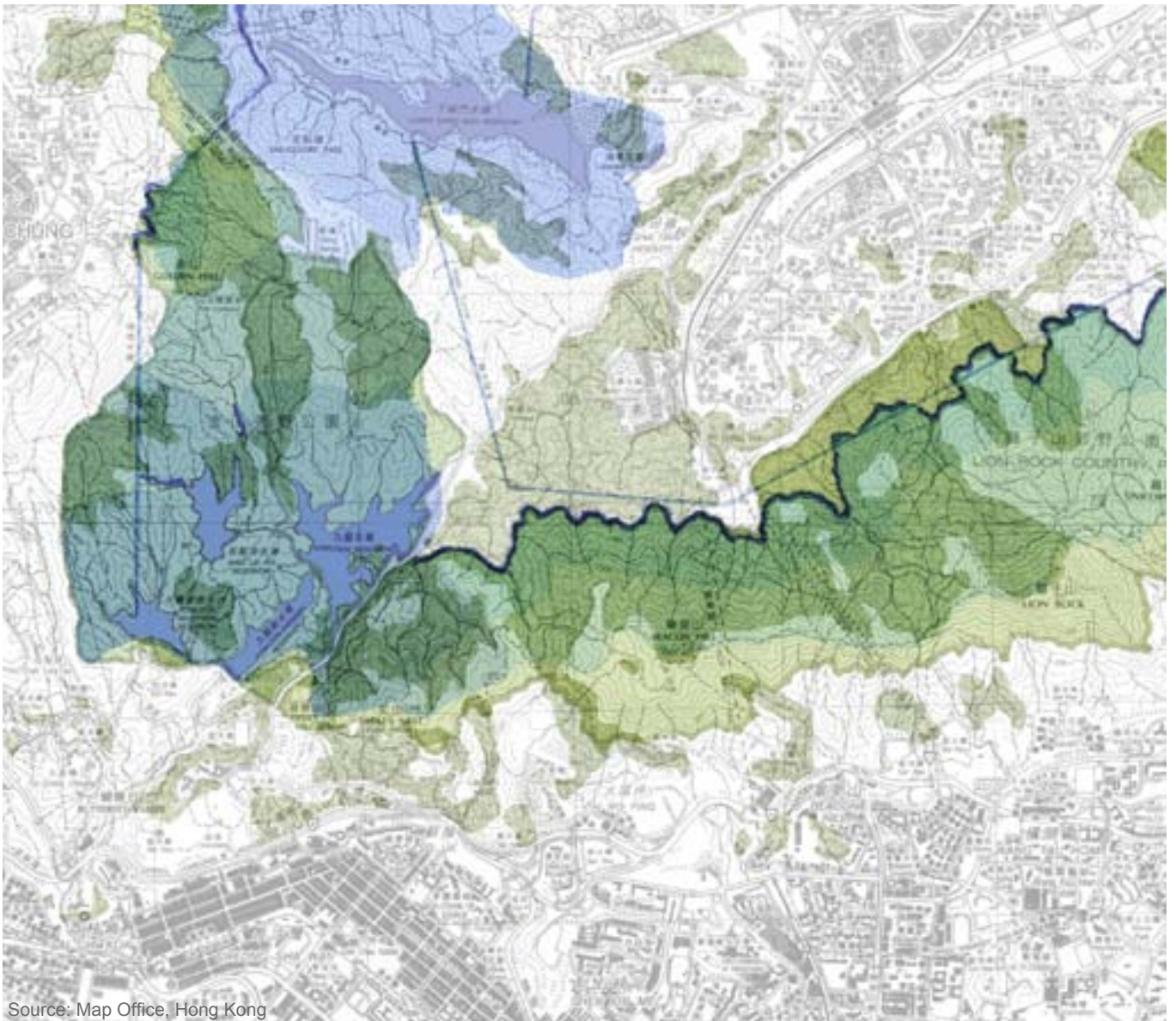
...PROTECTING THE HOUSING ESTATE BELOW





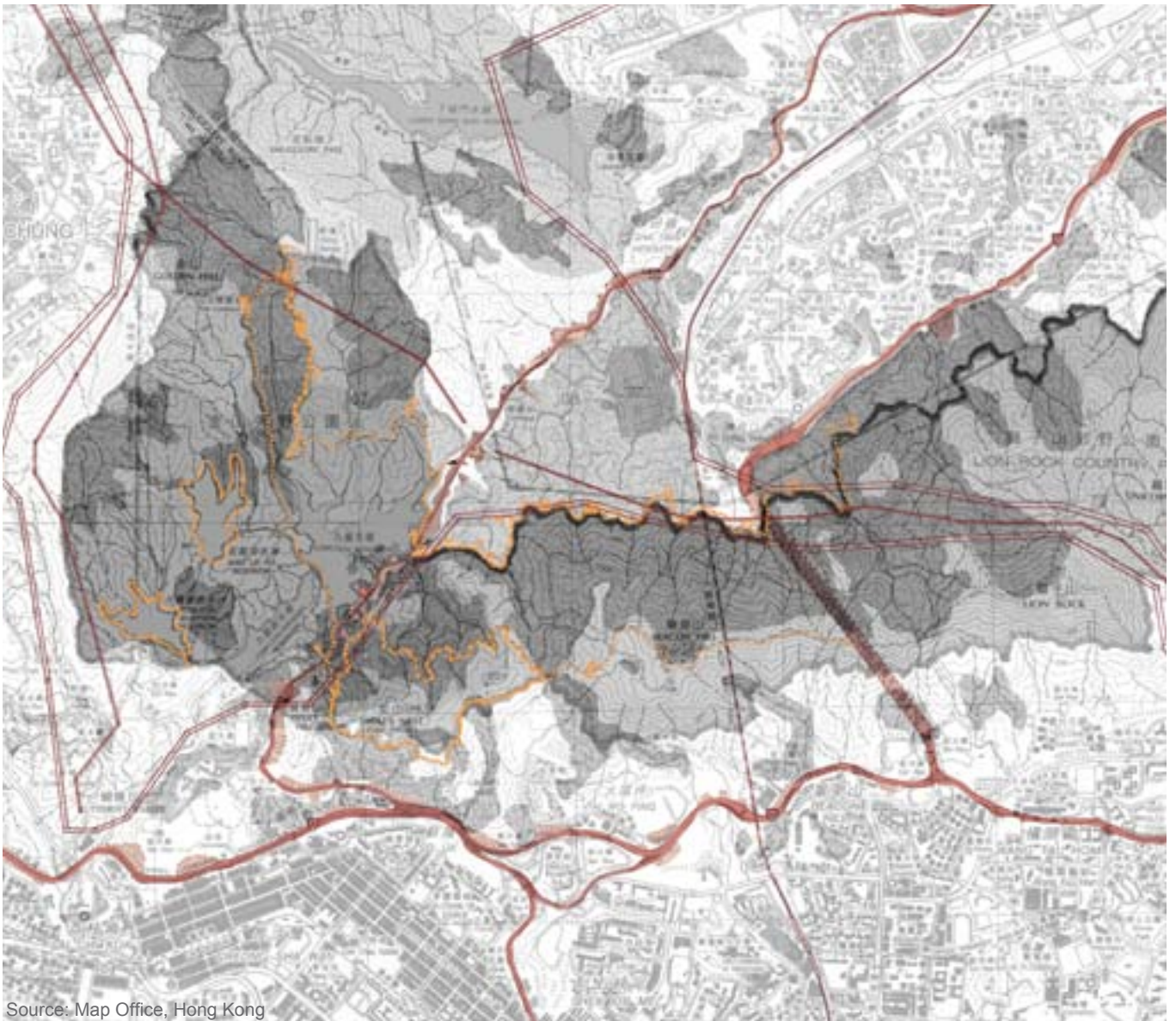
BUILT NATURE

A Body of Constructed Nature...



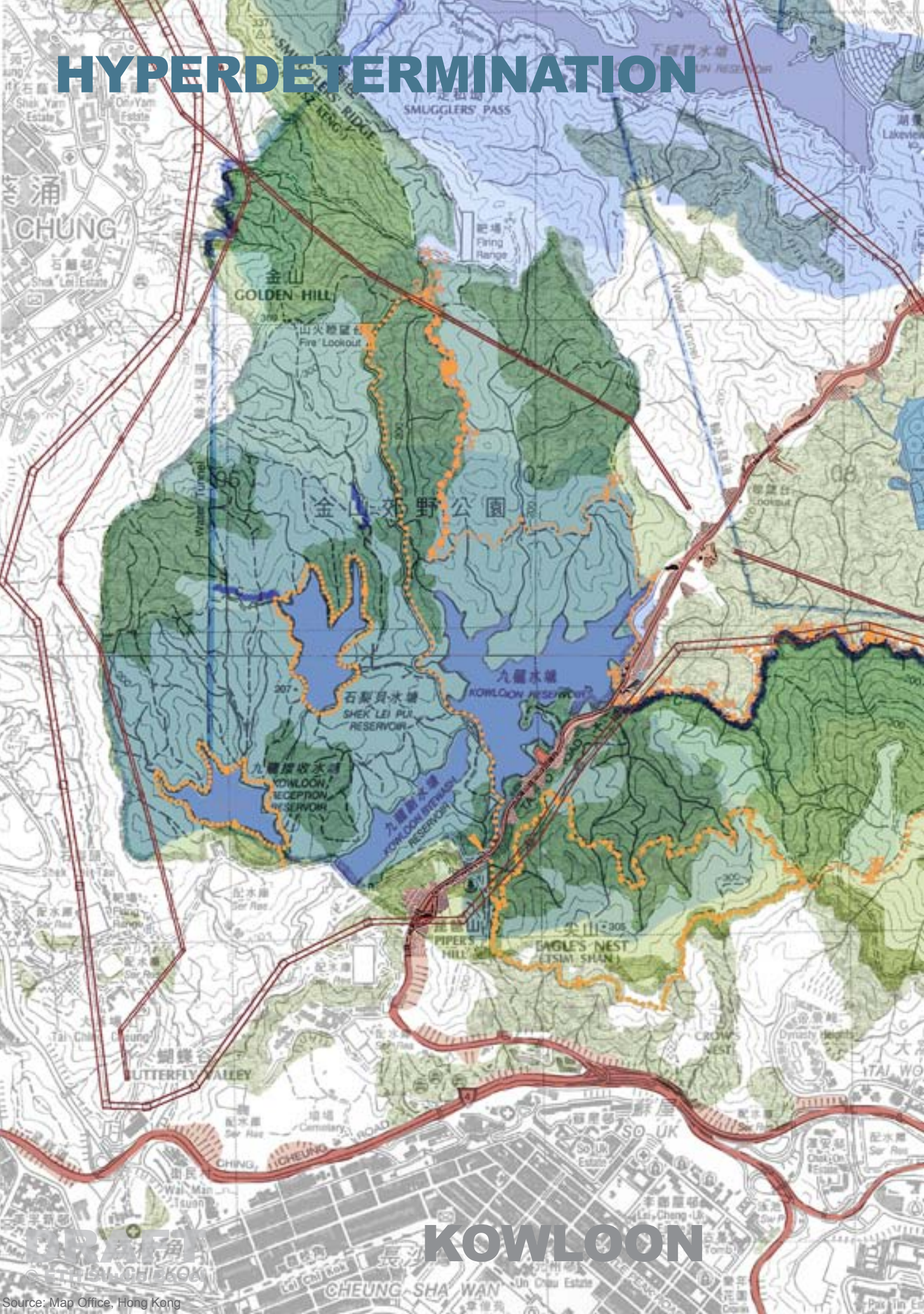
Source: Map Office, Hong Kong

...penetrated by the City's Infrastructure



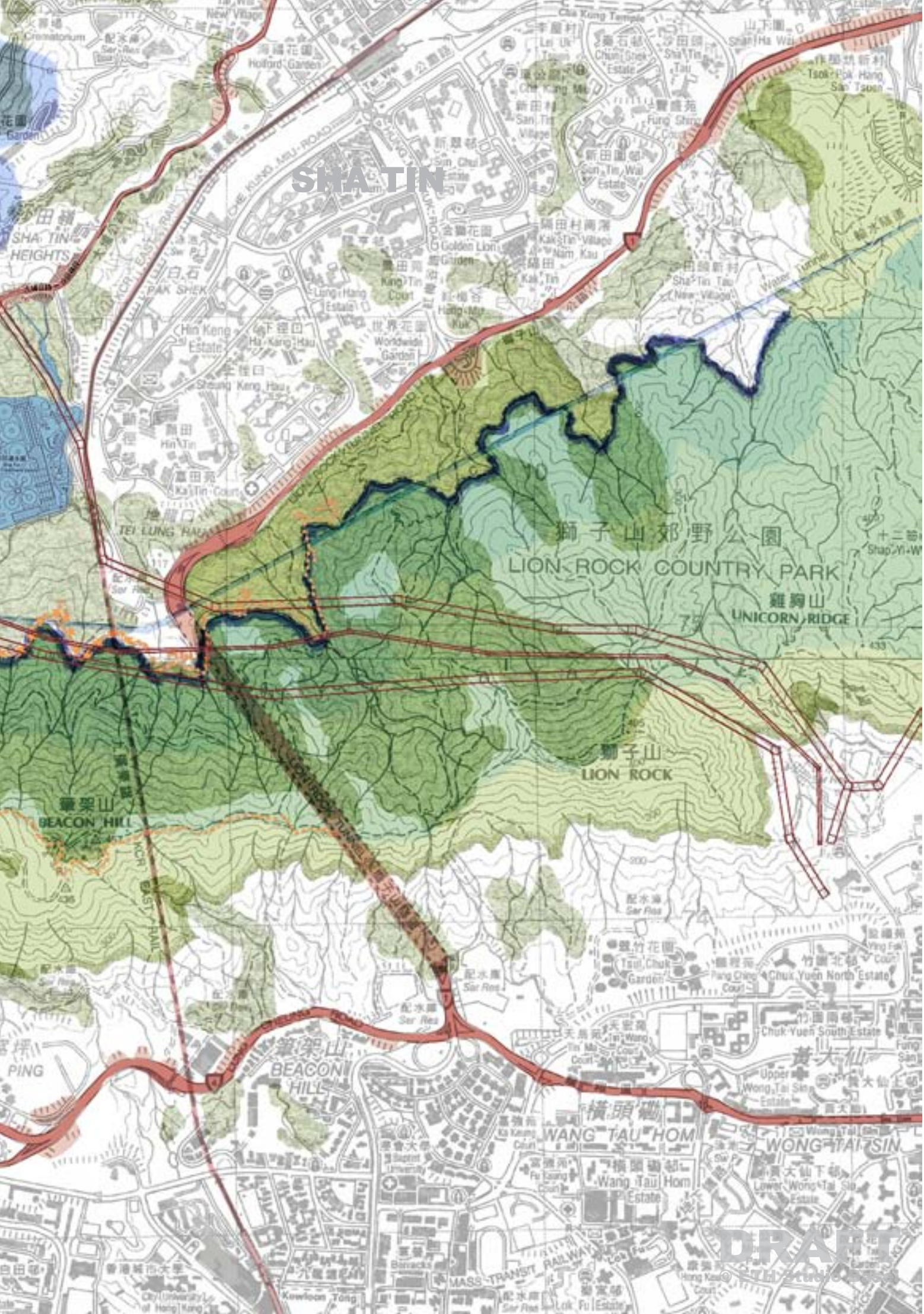
Source: Map Office, Hong Kong

HYPERDETERMINATION



URAFI
URBAN PLANNING & ARCHITECTURE

KOWLOON



SHA TIN

獅子山郊野公園
LION ROCK COUNTRY PARK
雞胸山
UNICORN RIDGE

獅子山
LION ROCK

景架山
BEACON HILL

景架山
BEACON HILL

橫頭磡
WANG TAU HOM

黃大仙
WONG TAI SIN

DRAFT
S.H. Studio

HONG KONG'S NATURE

Every square centimetre of Hong Kong's surface is under control.....







All photographs by Sascha Mathis and Nele Dechmann, if not stated otherwise

CONTACTS IN HONG KONG

Civil Engineering Department

Cheung Li-chun, Bruce
eca_2wkd@ced.gov.hk

The Chinese University of Hong Kong

Bertin, Vito
vito@cuhk.edu.hk

Agriculture, Fisheries and Conservation Department

Cheung Kwok-wai
kw_cheung@afcd.gov.hk

Water Supplies Department

Ir Lee Tai On
to_lee@wsd.gov.hk