

juraHeights

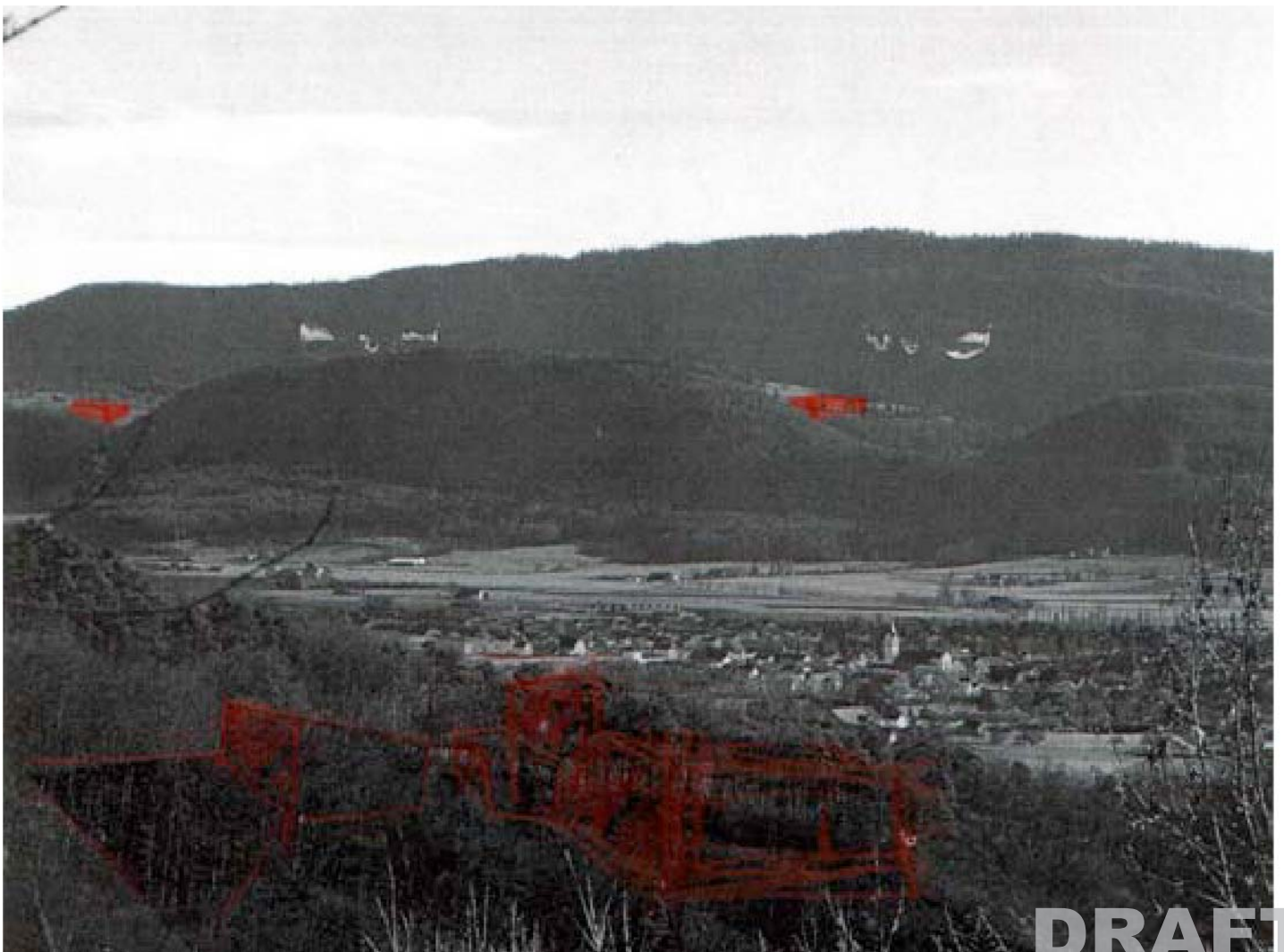
ETH STUDIO BASEL - Contemporary City Institute

Prof. Jacques Herzog, Prof. Pierre de Meuron, Simon Hartmann, Manuel Herz
L. Giacomo Zanchetta, Roman Ziegler

juraHeights

ETH STUDIO BASEL - Contemporary City Institute
Prof. Jacques Herzog, Prof. Pierre de Meuron, Simon Hartmann, Manuel Herz
L. Giacomo Zanchetta, Roman Ziegler

winter term, january 2007



DRAFT
© ETH Studio Basel

CONTENT

marginalisation_ENTRANCE TO THEMARGINALISED JURA
marginalisation_GEOLOGICAL BORDERS
history_THE CONNECTION DELEMONT-BASEL HAS HISTORY
field of retreatment_FROM 1000 METERS RELIGIOUS LIBERTY IN THE JURA
field of retreatment_UNDER-INFLATION

diversity_SPACIAL CONTRAST BETWEEN BASINS AND FOLDINGS
diversity_TRANSIT - ACCUMULATION - ISOLATION

sprawl_SHRINKING DELÉMONT - GROWING SINGLE-FAMILY HOUSING VILLAGES IN THE BASIN
sprawl_REGIONAL SUBCENTERS DELÉMONT AND LAUFEN
connections_BASEL- BIEL- BÉLFORT
subcenter Delémont _STAGNATING CITY

subcenter Delémont_“ça ne bouge pas”
Courroux_LOSS OF ITS IDENTITY
Vellerat_ISLAND IN THE JURAHEIGHT

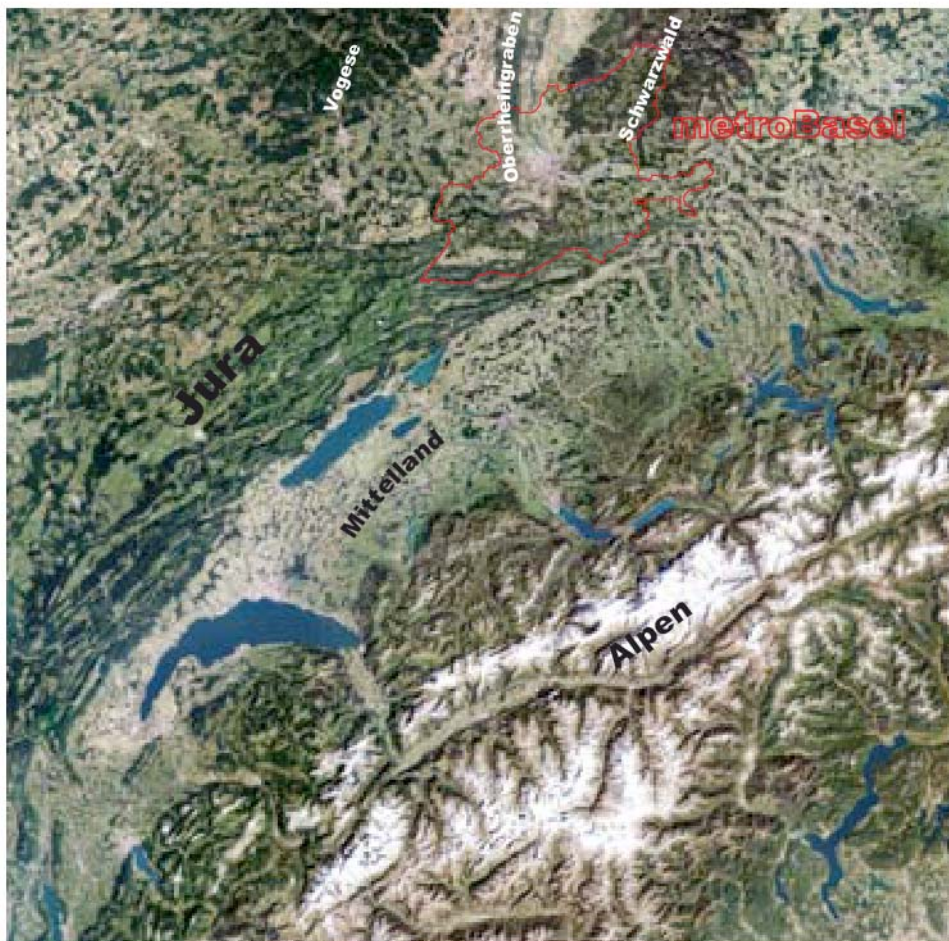
contrasts_VAST/ HOMOGENEOUS BASIN - FURROWED INTERMEDIATE ZONE
Basin-Delémont / Islands_GARDEN-CITY / BORGHI
references_POSSIBLE INTERVENTION: LIVING IN THE GREEN
Aesch - Delémont_”SCHWELLE” TO THE JURA
intervention_INTERMEDIATE ZONE

Introduction

The canton Jura has a low density of population. The urban areas are concentrated on Porrentruy and mainly on the agglomeration Delémont, main city of the canton. The Jura is a relatively self-contained region, which is very loosely connected to the swiss urban network and has very limited financial possibilities.

Historically the Jura already had difficulties to become integrated to the other surrounding regions; thereby the geology played an important role. Still now despite of the position between the two important economical poles - the metroBasel and the Mittelland - the Jura doesn't has the possibility to benefit from the economical growth of the two poles and has still a marginalised position.

The canton Jura is mainly rural. Therefore the two urban centres (especially Delémont) have a polarizing effect. Currently the agglomeration Delémont aspirate a stronger relation to metroBasel; particularly in mikromechanic industry. Simultaneously the own advantages of the region can be a further compementation to metroBasel: quality of life (sound, unique nature), proximity to Basel and Delémont as urban subcenter.



marginalisation_ENTRANCE TO THE MARGINALISED JURA

F

metr

Montbéliard

A J O U I E

Porrentruy

KANTON JURA

Del

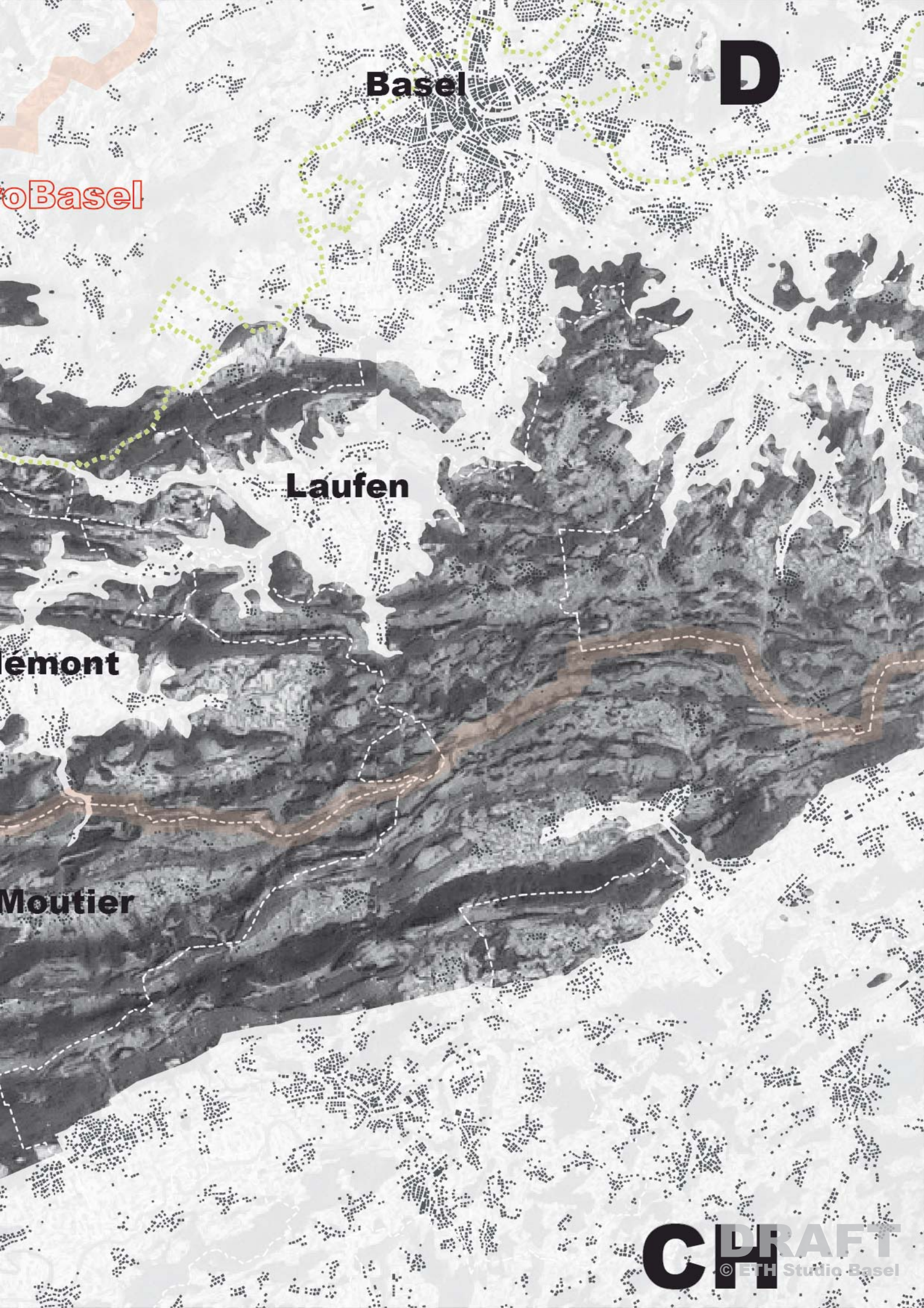
Saignelégier

FRANCHES MONTAGNES

DRAFT

© ETH Studio Sset

Biel



Basel

D

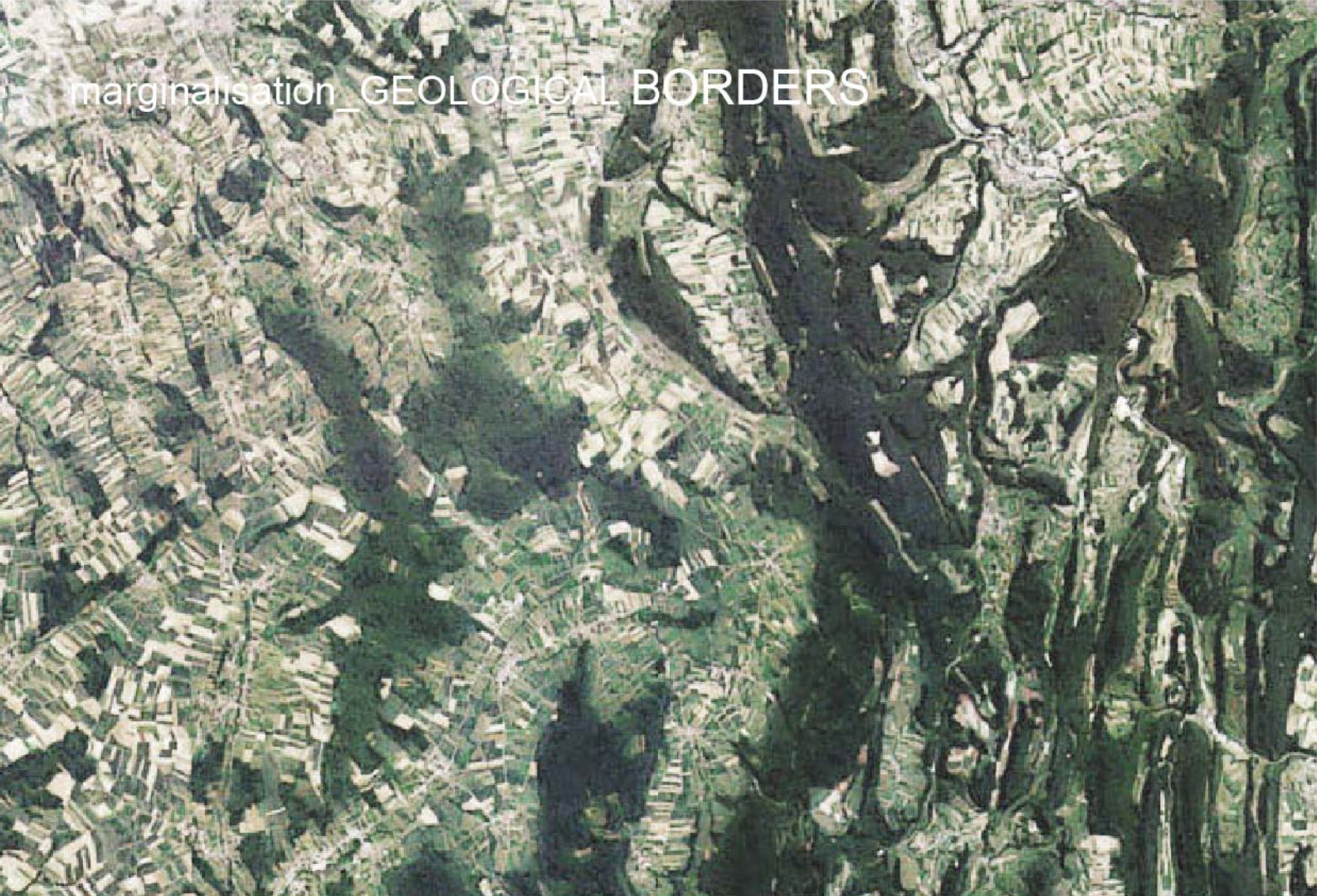
oBasel

Laufen

emont

Moutier

marginalisation _ GEOLOGICAL BORDERS



Basel

Laufen

flat / wide / homogeneous

rutted

smooth transition

Rheingraben

Feinstaub 21 $\mu\text{g}/\text{m}^3$
density ca 600 pers/ km^2
forest 30-40%

Tafeljura

Feinstaub 16 $\mu\text{g}/\text{m}^3$
density ca 40 pers/ km^2
forest 50%



Delémont

Moutier

Biel



flat / isolated
embracing plane

canalized / linearity
mural transition

Delémont-Basin

Feinstaub 18 $\mu\text{g}/\text{m}^3$
density ca 120 pers/ km^2
forest 40%

Kettenjura

Feinstaub 15 $\mu\text{g}/\text{m}^3$
density ca 100 pers/ km^2
forest 50-60%

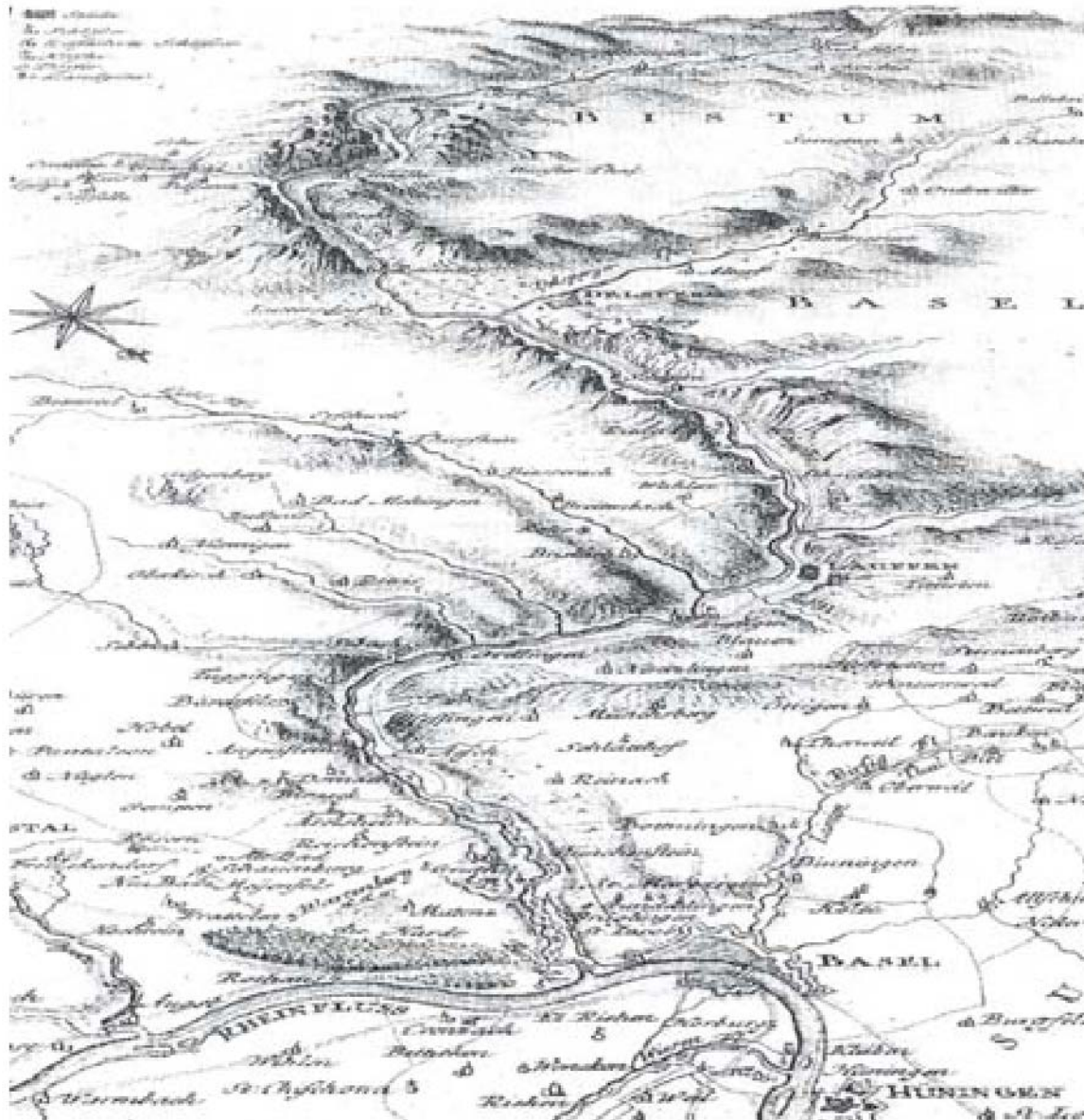
Mittelland

Feinstaub 20 $\mu\text{g}/\text{m}^3$
density ca 300 pers/ km^2
forest 30-40%

history_THE CONNECTION DELEMONT - BASEL HAS HISTORY

The unity of the turbulent, fragmented landscape, which consists only by forest, grassland, mountains and valleys, has its history. It survived seven centuries under the paternal bishop from Bistum Basel. 1529 Jura accommodated the catholic bishop escaping from the reformist. He found his retreat in Porrentruy.

After the big French Revolution the jurassian became for 20 years french and 1815 bernese. 1974, after 25 years grim fight political unrest, is the canton Jura founded.



Bistum Basel period: map showing the path from Basel into the Jura following the Birsvalley



Romans



999-1529 Bistum Basel



1529 Reformation: change of the bishopric residence from Basel to Porrentruy



1792-1813 The french period



1815- 1978 canton Bern



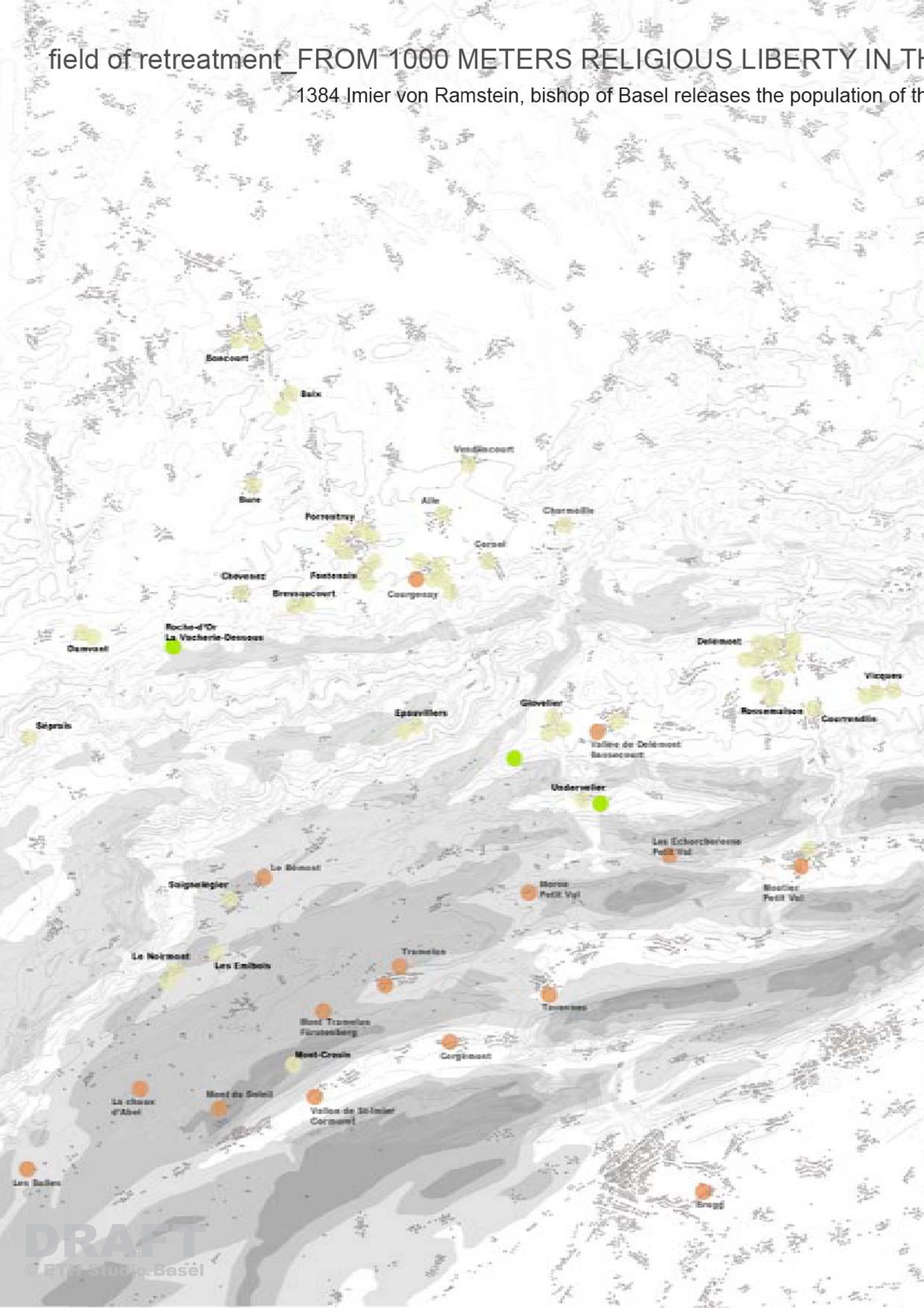
1978 foundation of republic and canton Jura



today: debate about the fusion between north and south Jura / networking metroBasel

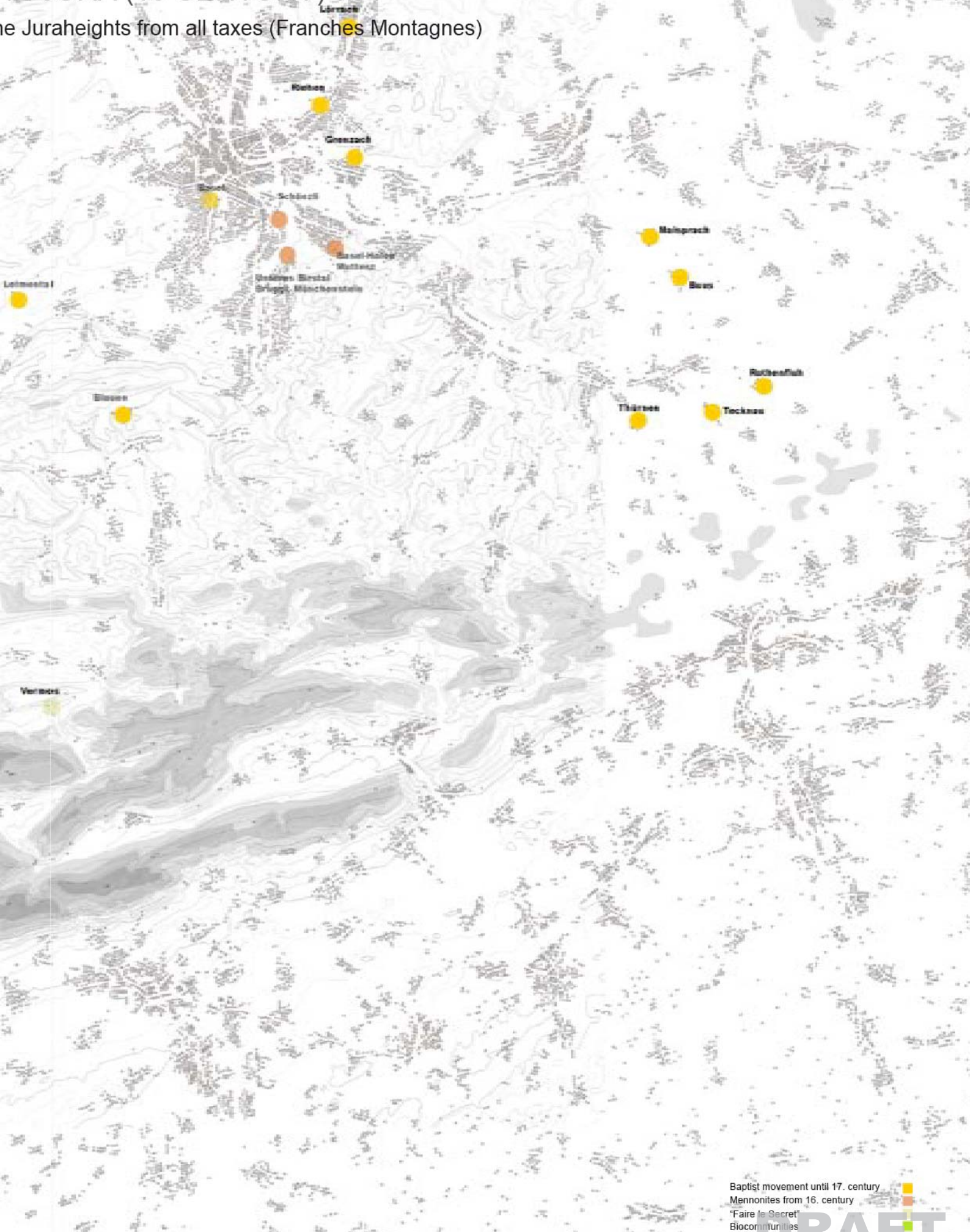
field of retreatment FROM 1000 METERS RELIGIOUS LIBERTY IN THE

1384 Imier von Ramstein, bishop of Basel releases the population of the



THE JURA (16 CENTURY)

the Jura heights from all taxes (Franches Montagnes)



Baptist movement until 17. century
Mennonites from 16. century
"Faire le Secret"
Biocommunities

field of retreatment_UNDER - INFLATION

Ferme Masesselin

living in the commune, self-supply, bio production, permaculture

Hare Krishna

new religious movement on basis of the Hinduism

„Nous cherchions depuis longtemps un lieu idéal pour nous adonner à la culture biologique, pour vivre simplement et élever nos pensée“ (citation newspaper: Le Democrate, 16 Januar 1990)

Longo Mai

self-supply, agrarian and handcrafts- commune
european cooperation, politically active: „Das Essen kommt nicht aus dem Supermarkt“

Association Epidaure

Alternative medicin, naturopathic, social work (reintegration of adolescent), commune

Mont Soleil

commune of baptists. „Pour s'ouvrir à l'extérieur, ils projettent d'agrandir leur centre de rencontre des Mottes...deux dortoirs, des espaces pour donner des cours...ils correspondent au désir de la communauté de dépasser les frontières confessionnelles, culturelles, linguistique et sociale...“ (citat newspaper: La Liberté, 19 Mai 2000)

La Chaux d'Abel

oldest protestant Freikirche. For the baptist the Reformation wasn't radical enough. The big immigration to the Bistum Basel has taken place from 1700.
the rough juramountains, the wide landpieces over 1000 meter height haven't been in demand and conolised. Therefore the bishop of Basel concedes these landpieces to the baptists refugees. The baptists could build-up there a new home.

Tramelan

„A Tramelan, les sectes se bousculent sans faire de bruit“
„Le village aux 25 sectes“ (citation newspaper: 24 Heures, 20 Oktober 1994)

„Faire le secret“

„white magic“ (religious base).
ritual with prayer, which heals diseases



Ferme Masesselin



Hare Krishna



Longo Mai



Association Epidaure



Mont Soleil



La Chaux d'Abel

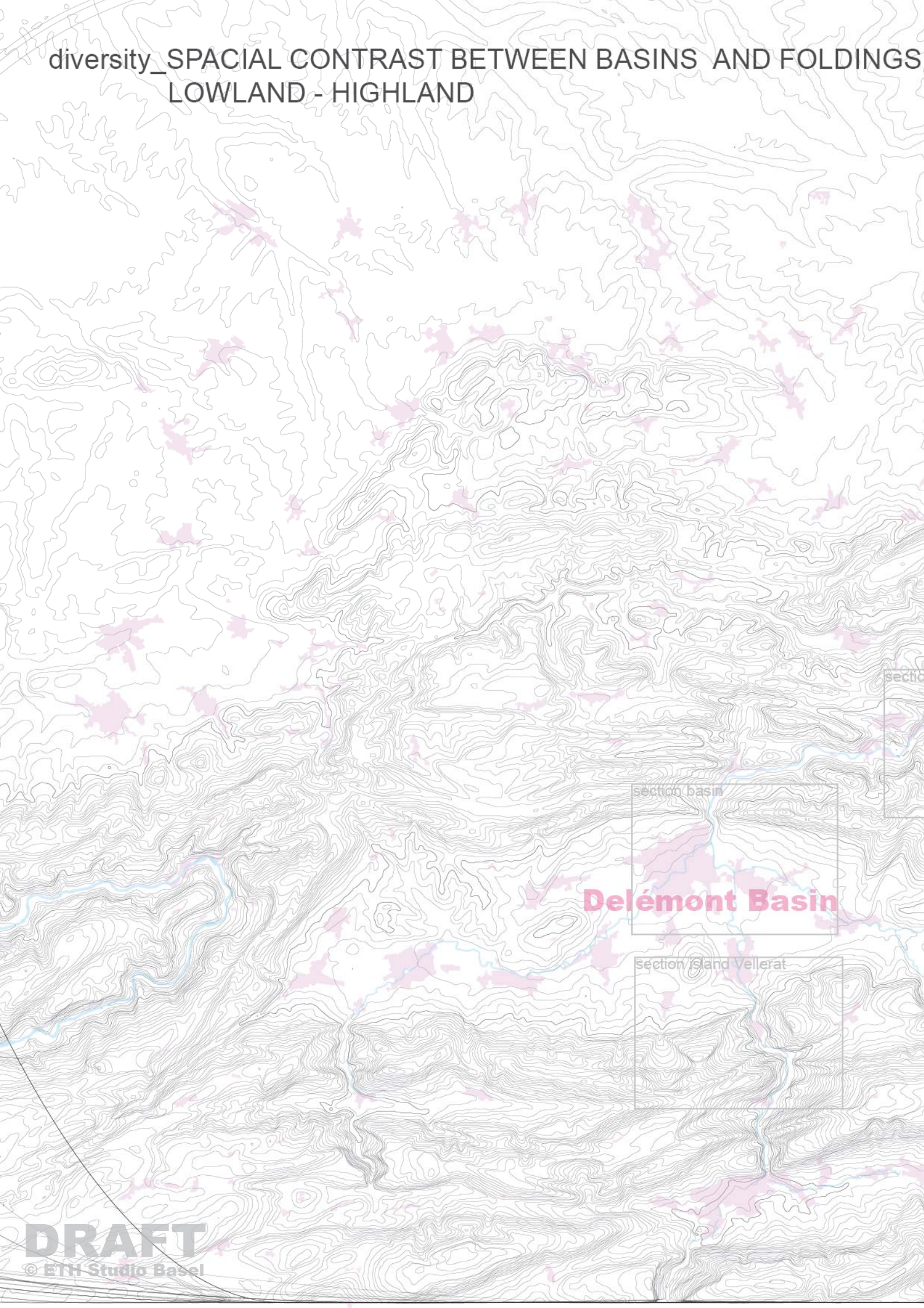


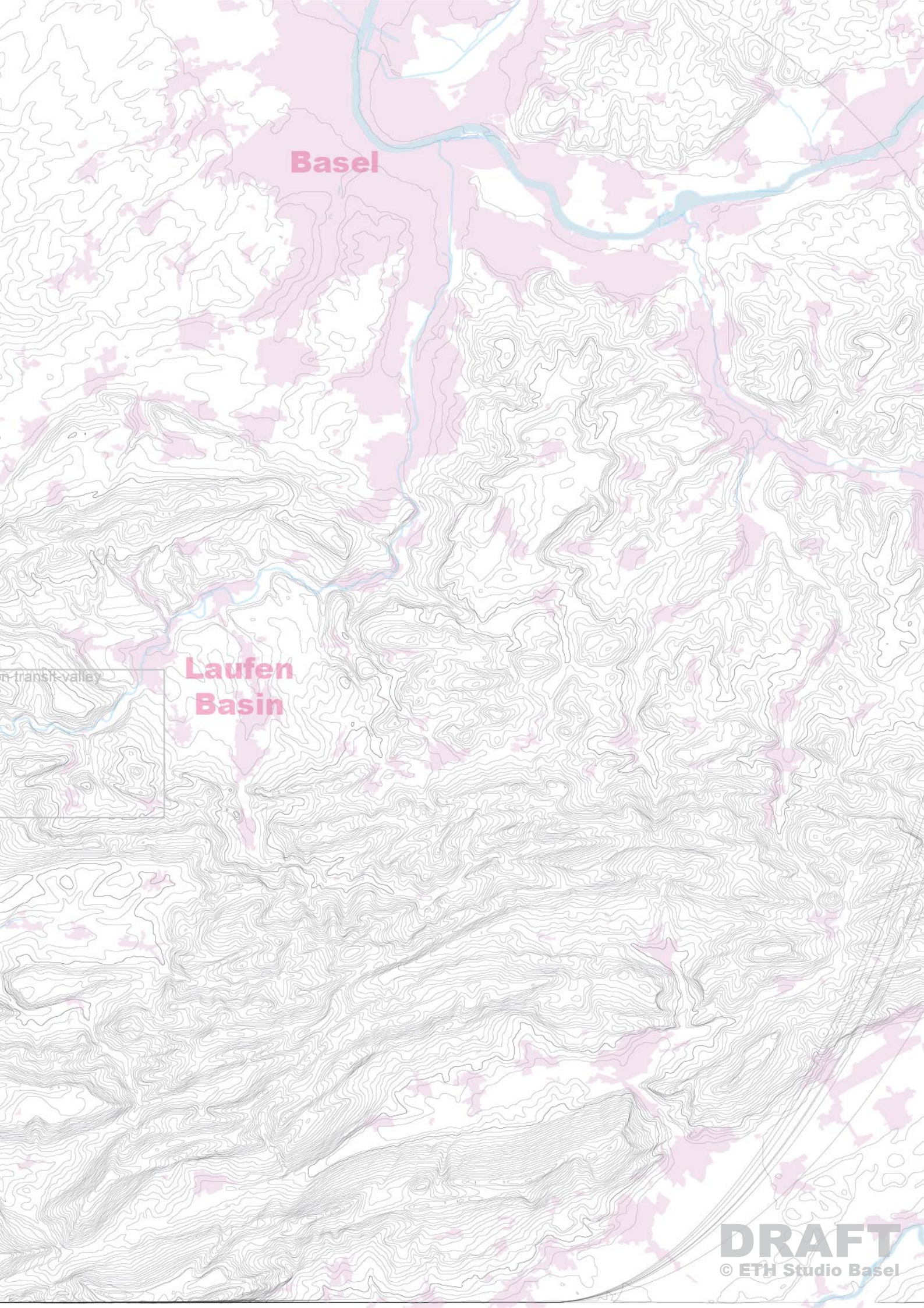
Tramelan



Miécourt

diversity_SPACIAL CONTRAST BETWEEN BASINS AND FOLDINGS
LOWLAND - HIGHLAND





Basel

**Laufen
Basin**

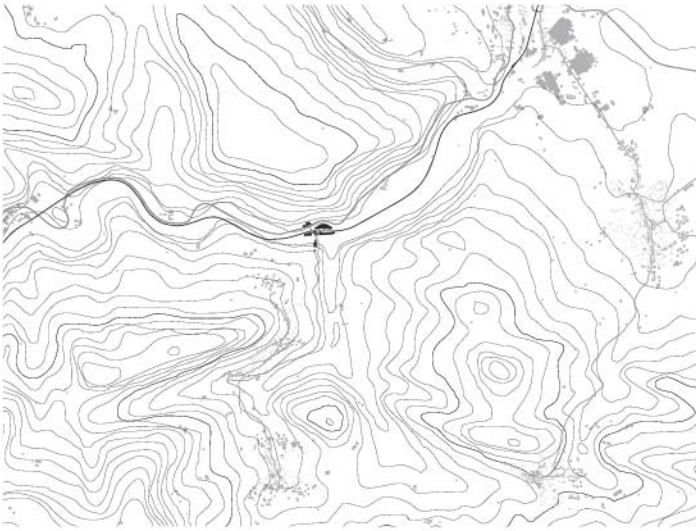
transit-valley





diversity_TRANSIT - ACCUMULATION - ISOLATION





Transit-Valley

Linear connection between Laufen-Basin and Delémont-Basin



Delémont-Basin

Accumulation of all the movements



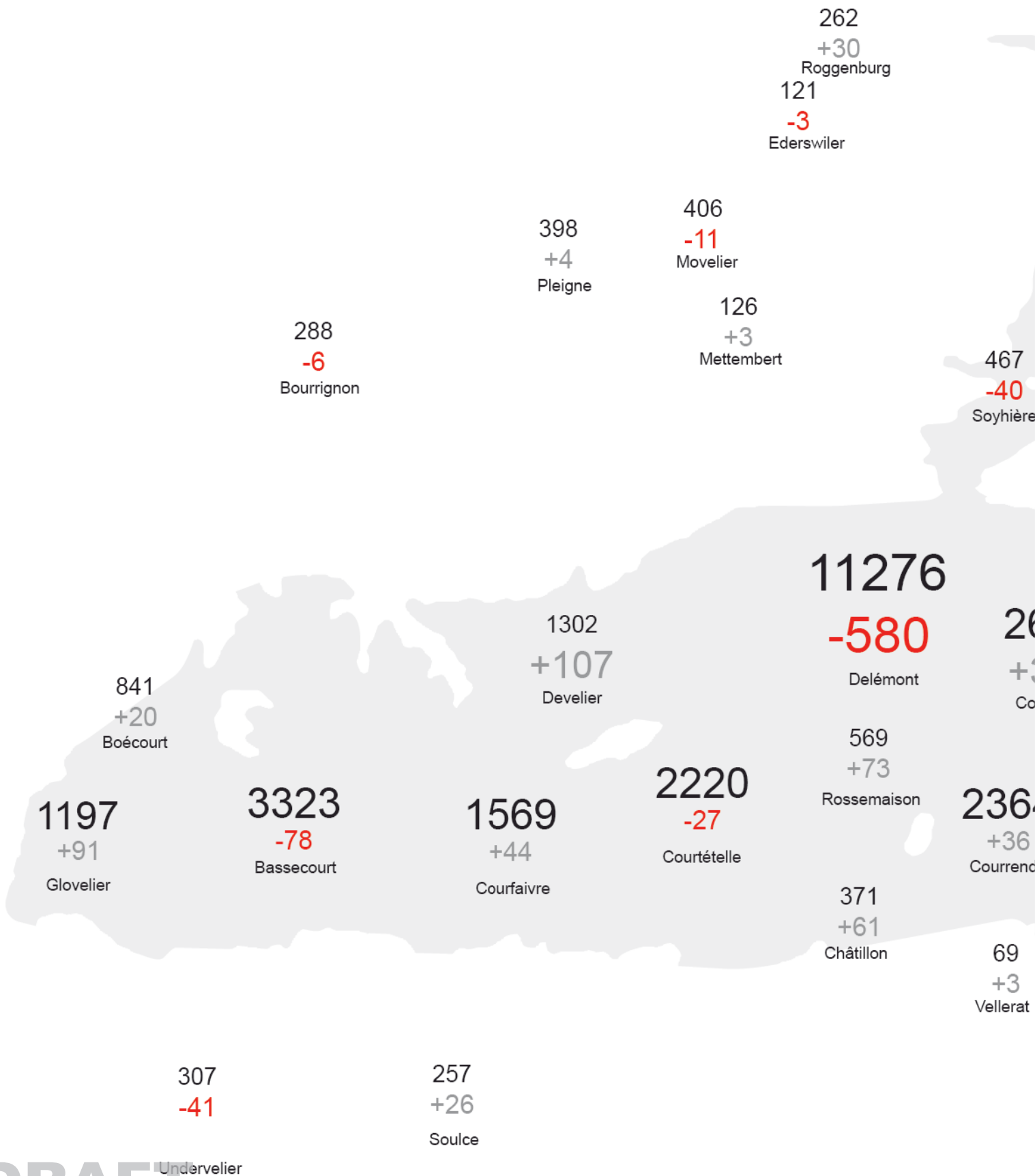
Vellerat Island

Hidden plane beside Delémont-Basin

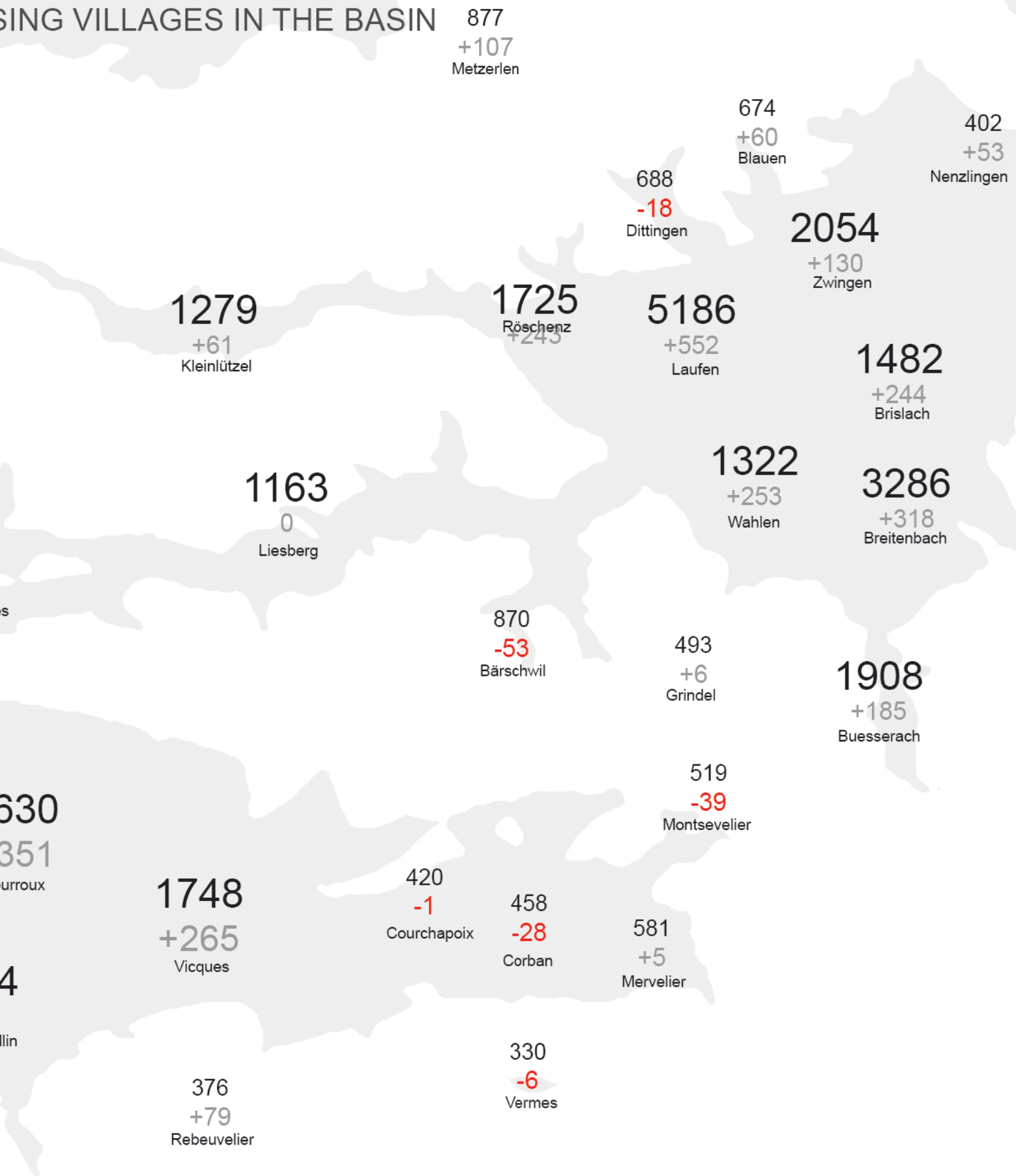




sprawl_SHRINKING DELÉMONT - GROWING SINGLE-FAMILY HOUS



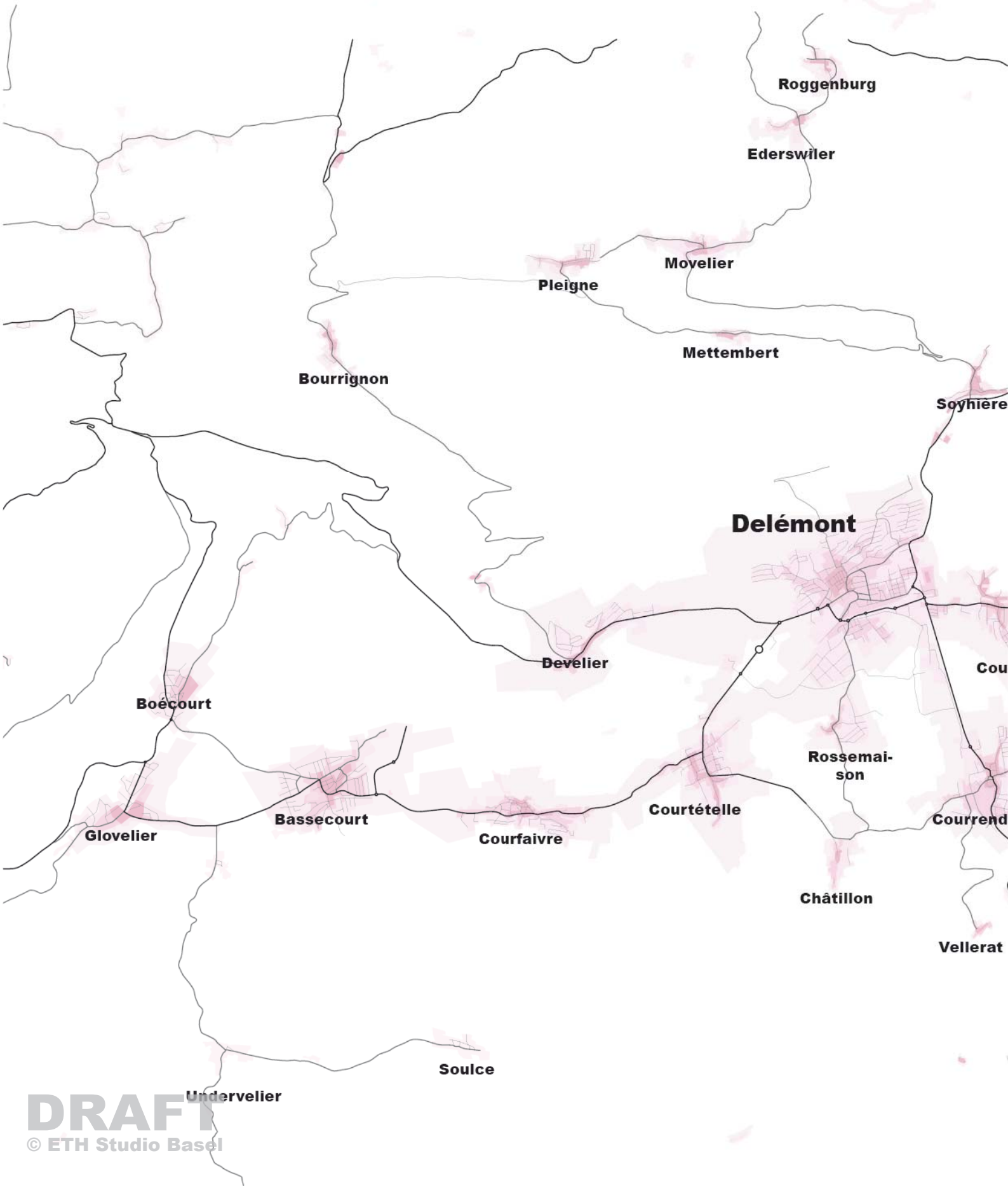
SING VILLAGES IN THE BASIN

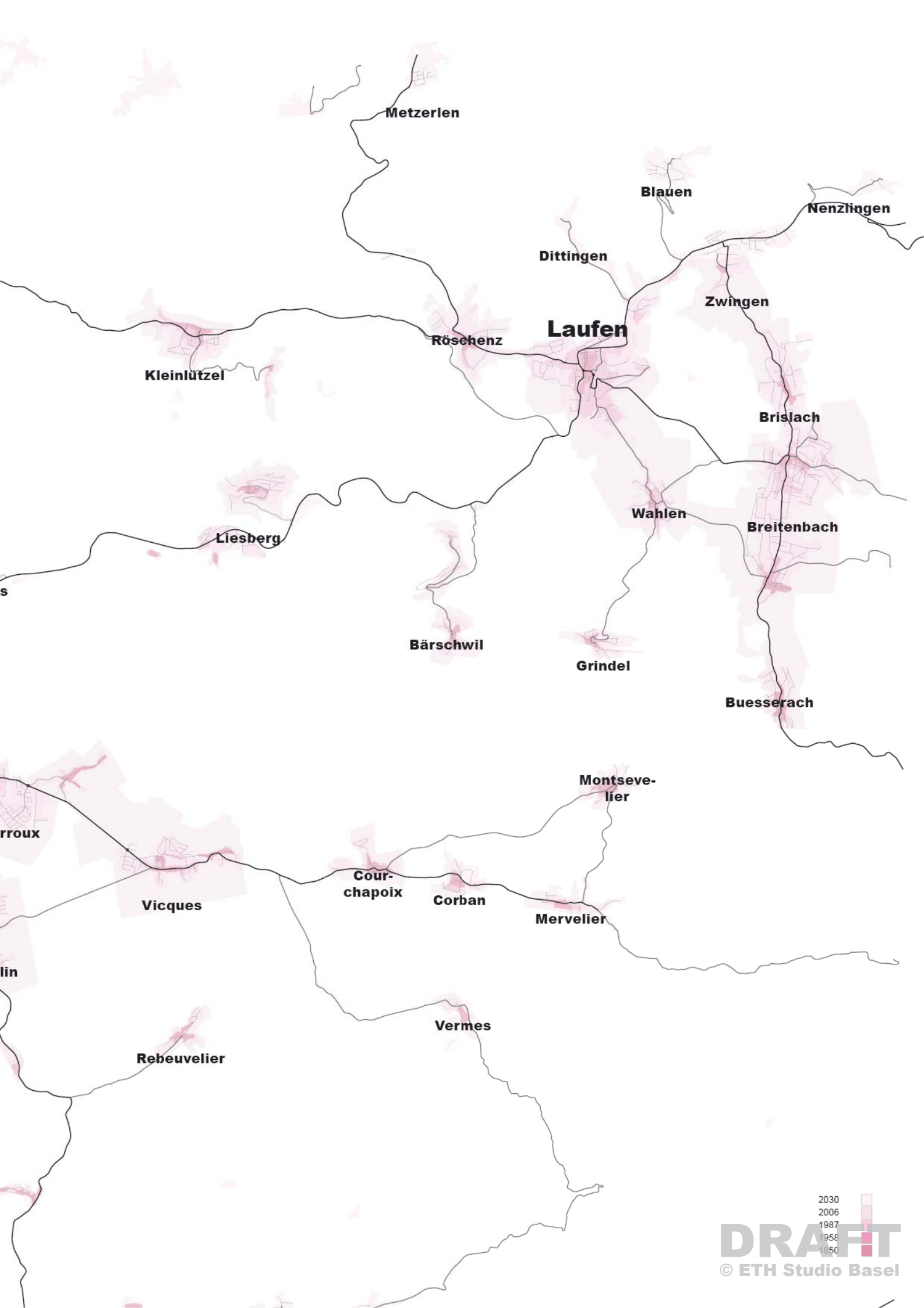


sprawl_2030: SINGLE-FAMILY HOUSING SPREAD OUT

Low-density land use

The whole basin becomes a dormitory town





Metzerlen

Blauen

Nenzlingen

Dittingen

Zwingen

Laufen

Röschenz

Kleinklützel

Brislach

Liesberg

Wahlen

Breitenbach

Bärschwil

Grindel

Buesserach

Montsevelier

rroux

Vicques

Courchapoix

Corban

Mervelier

lin

Vermes

Rebeuvelier

2030
2006
1987
1958
1850

sprawl_REGIONAL SUBCENTERS DELÉMONT AND LAUFEN

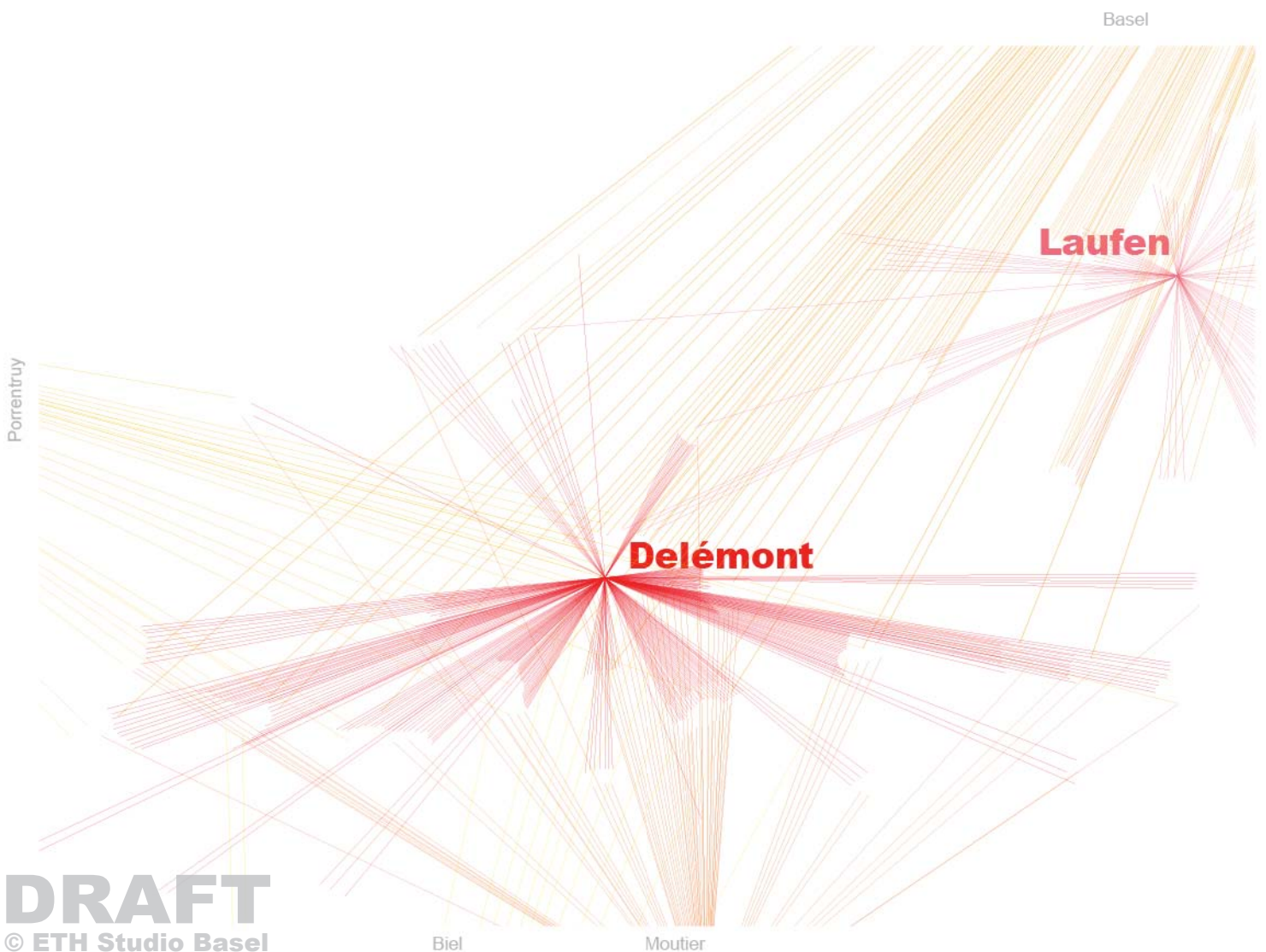
no interchange between the subcenters and its surroundings

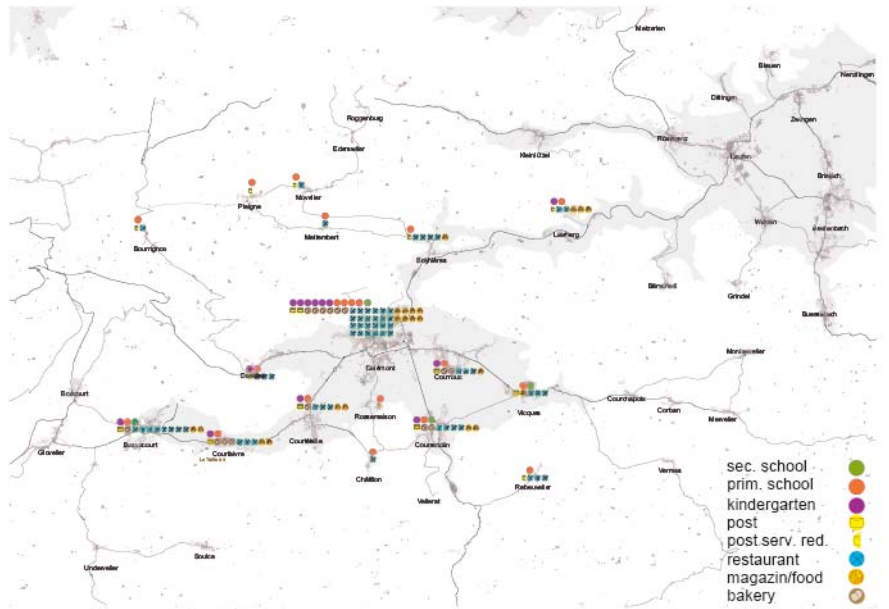
Basin-Delémont divided in single use zones

spatial segregation between working, living increases the individual traffic

marginalisation of villages outside the basin (public transport, daily needs)

well developed public transport system in the basin





daily needs



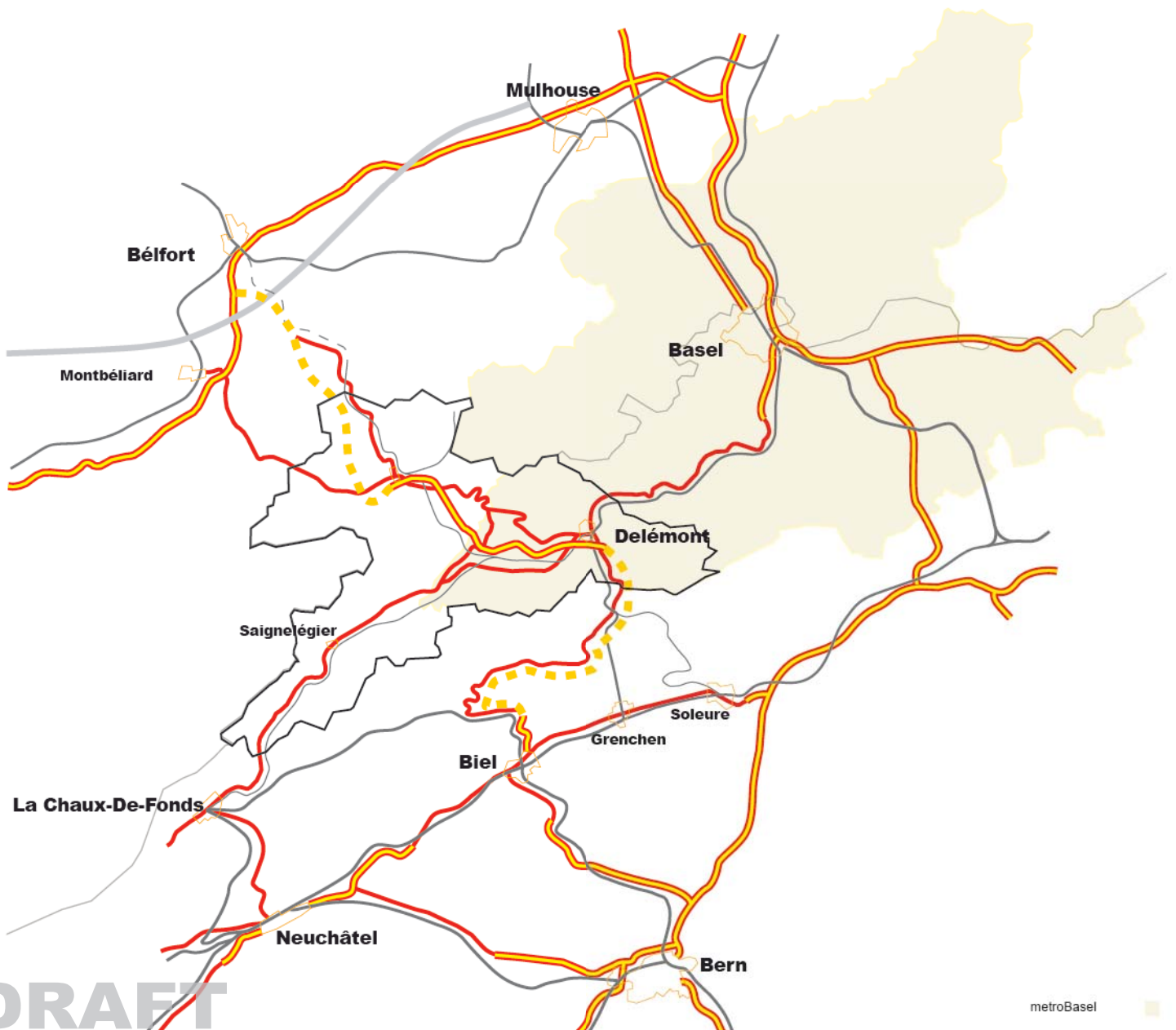
frequency of public transport
several S3 train stops in Basin Delémont



traffic frequency agglomeration Delémont

connections_BASEL- BIEL- BÉLFORT

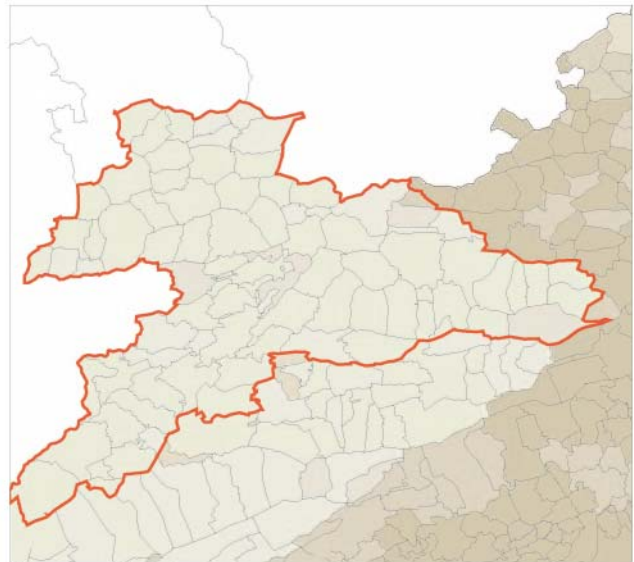
Delémont lies 30 km southwest of Basel, about halfway between Basel and Biel
In 1998, the first stretch of motorway in the Canton of Jura (the A16) was opened between Delémont and Porrentruy





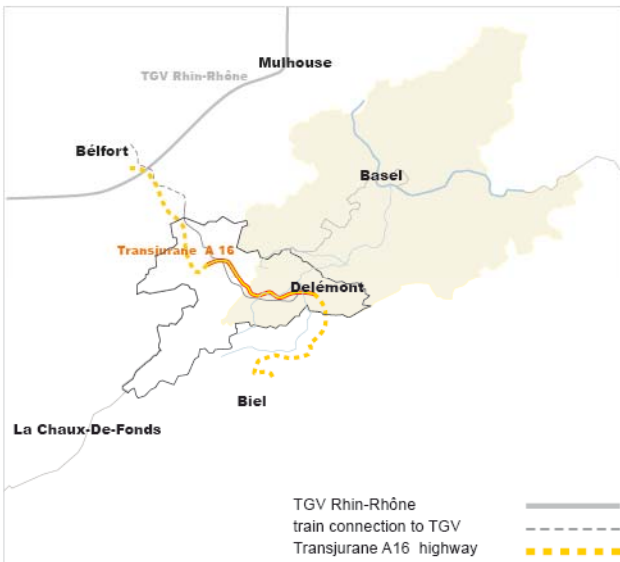
time of travel: public/individual transport

Delémont-Basel 30 minutes by train



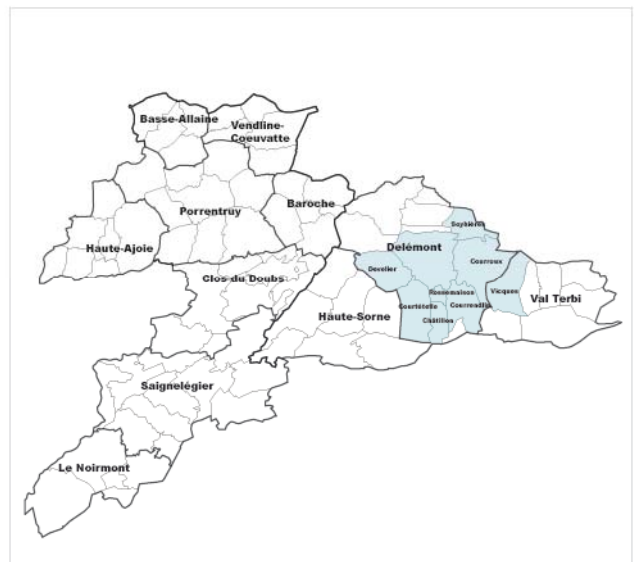
language border

clear border to north-east along canton limit



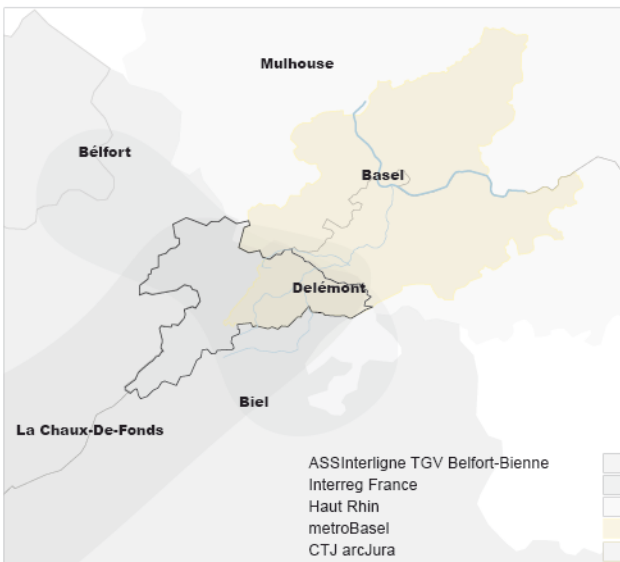
Traffic projects

enhancement of t ct connection between Jura and France



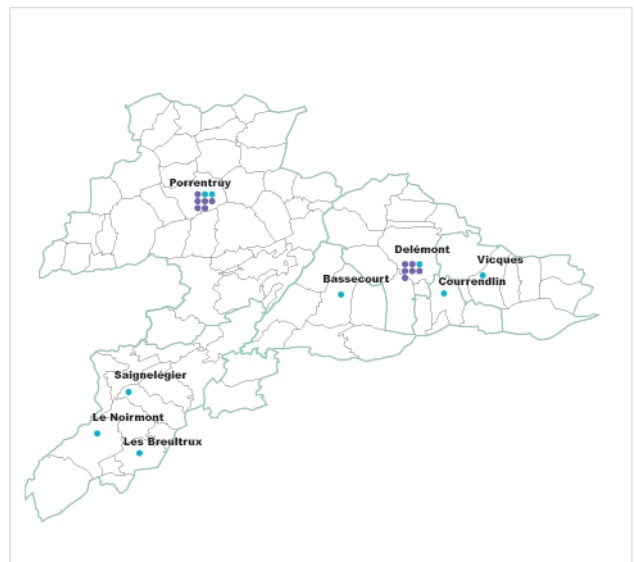
micro regions / agglomeration Delémont

- micro region as an indicator for fusion of weak communes,
- Delémont as the only urban agglomeration of the canton Jura



partnerships with Jura

inbetween



secondary / high / training school

concentration in the two poles Porrentruy and agglomeration Delémont

subcenter Delémont_STAGNATING CITY

regional, economic and governmental hub of the canton

ambitious project: intercommunal business-zone ZARD

10696 inhabitants (1995)

11276 inhabitants (2006)

growing of -5%





subcenter Delémont_“CA NE BOUGE PAS”





Wohnort: Courchapoix (seit 40 Jahren)
 Kindheit: Italien
 Arbeitsort: Delémont, Angestellte in Bäckerei
 tägliche Einkäufe: Delémont, Courroux, Couchepoix (Alimentaires)
 spezielle Einkäufe: Delémont
 Ausgang: Delémont (Restaurant, Pizzeria)
 Beziehung zu Basel: in 30 Jahre war sie 3 mal in Basel

Delémont_Nähe Altstadtmauer



Wohnort: Delémont
 Kindheit: Delémont
 Arbeitsort: Delémont
 tägliche Einkäufe: Delémont
 spezielle Einkäufe: Delémont, Bern (vor allem), Basel (selten)
 Ausgang: Delémont, Bern, Murten
 Beziehung zu Basel: Konzerte

Il n'y a pas assez d'animation, ca bouge pas assez

Delémont_Altsatdt



Wohnort: Courtételle
 Kindheit: Delémont
 Arbeitsort: Delémont
 tägliche Einkäufe: Courtételle, Delémont marché
 spezielle Einkäufe: Delémont
 Ausgang: Courtételle (Restaurant)
 Beziehung zu Basel: „Oui, une fois à l'année..“

„Je suis hereux de vivre ici“

Delémont_Bahnhof



Wohnort: Delémont, hat in Courroux keine wohnung gefunden
 Kindheit: Courroux
 Arbeitsort: Delémont (Manor)
 tägliche Einkäufe: Delémont (Manor)
 spezielle Einkäufe: Delémont (Manor)
 Ausgang: Delémont, Courrendlin(Disco)
 Beziehung zu Basel: Konzerte, 2-3 mal im Jahr

„Regardez, c'est merveilleux ici! N'est-il pas?“

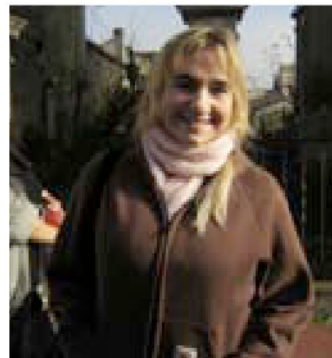
Delémont_La Some



Wohnort: Delémont, seit 10 Jahren
 Kindheit: Moutier
 Arbeitsort: Delémont
 tägliche Einkäufe: Delémont
 spezielle Einkäufe: Delémont
 Ausgang: Nature, Wald, Pilze Sammeln
 Beziehung zu Basel: „Pas spécialement“

C'est tout betonée, la nature est disparée à Delémont. Et la gens ne réagi pas.

Delémont_La Some



Wohnort: Moutier
 Kindheit: Moutier
 Arbeitsort: Delémont (Von Roll)
 tägliche Einkäufe: Delémont
 spezielle Einkäufe: Delémont, Bern, Basel
 Ausgang: Jura, vor allem Delémont (Bar Bus, Pub)
 Beziehung zu Basel: „Pas beaucoup, quelque fois pour des concerts“

Le jura c'est une belle région; mais il n'y a pas une grande ville. C'est la campagne ici

Delémont_Bahnhofstrasse



Wohnort: Ici (Delémont)
 Kindheit: Ici
 Arbeitsort: Ici
 tägliche Einkäufe: Ici
 spezielle Einkäufe: Ici
 Ausgang: Ici
 Beziehung zu Basel: „Peux“. Die Schwester wohnt in Riehen, er würde sie aber nicht so oft besuchen.

Delémont_Altsatdt

Courroux_LOSS OF ITS IDENTITY

sleeping village

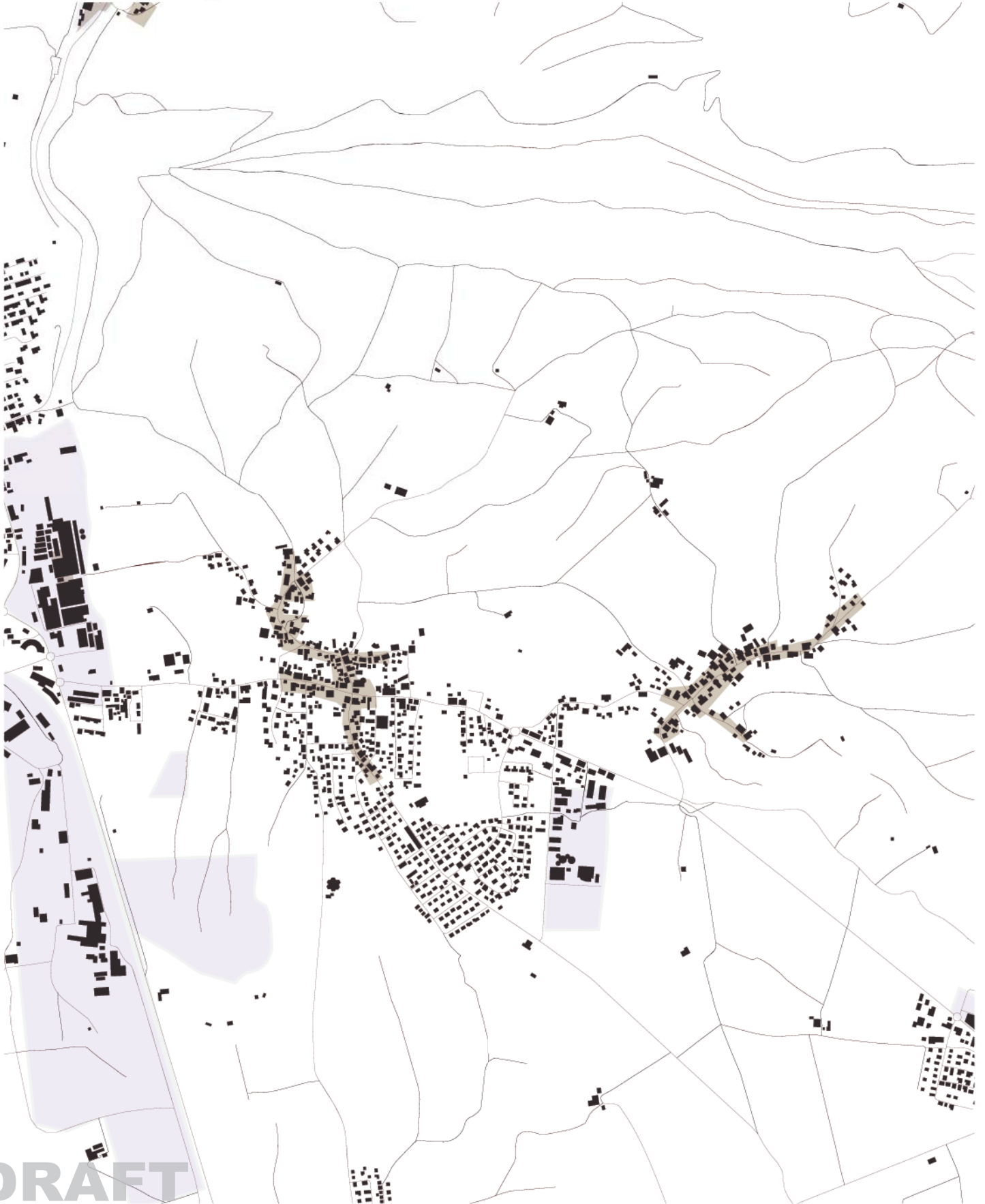
wide streets are connecting Courroux and Delémont

single-family housing clusters occupy and destroy the surrounding landscape

2279 inhabitants (1995)

2630 inhabitants (2006)

growing of 13%





Vellerat_ISLAND IN THE JURAHEIGHT

rural character

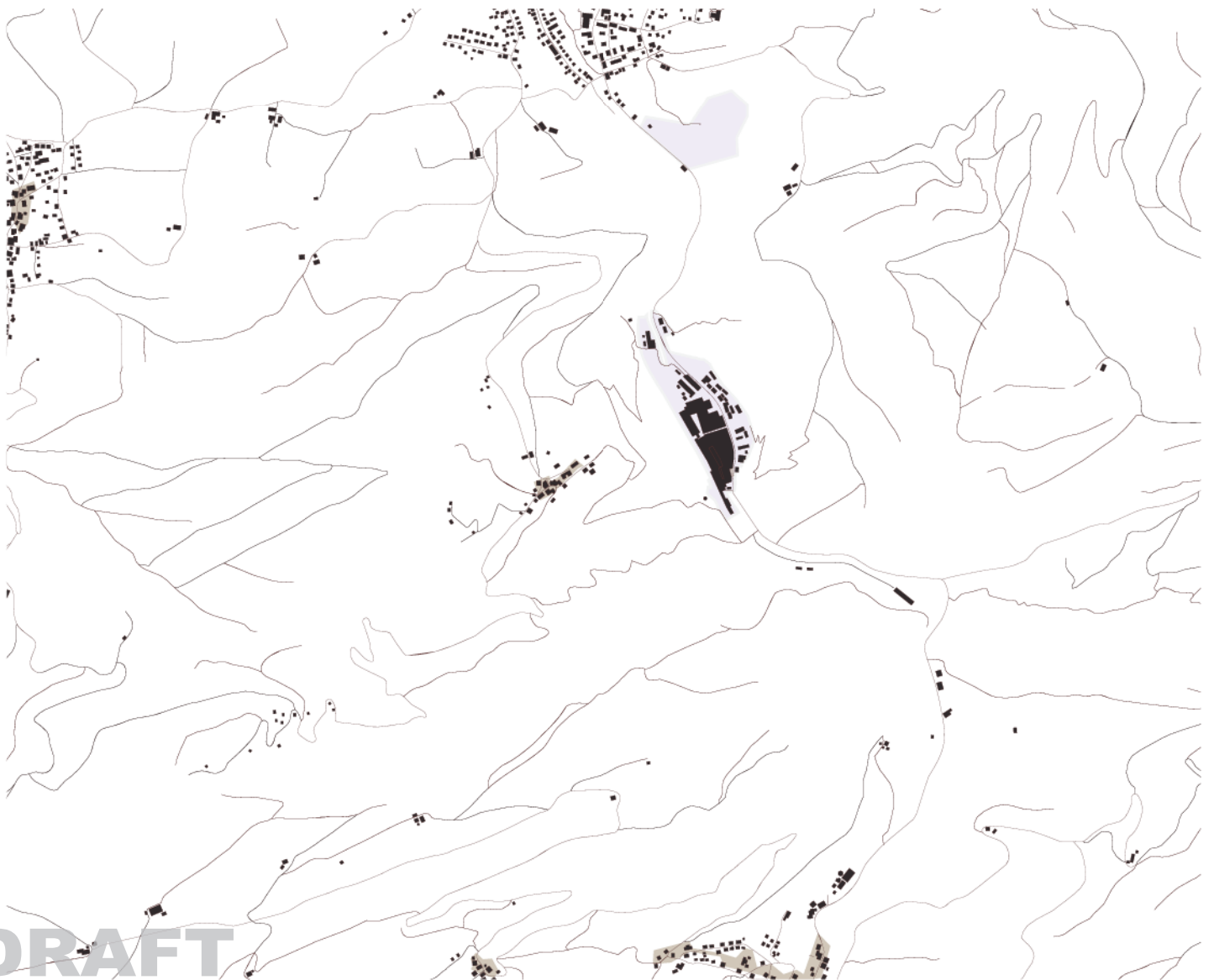
despite to its proximity to the Basin-Delémont it's in a complete natural landscape.

isolated, idyllic, intimate

66 inhabitants (1995)

69 inhabitants (2006)

growing of 4.3%



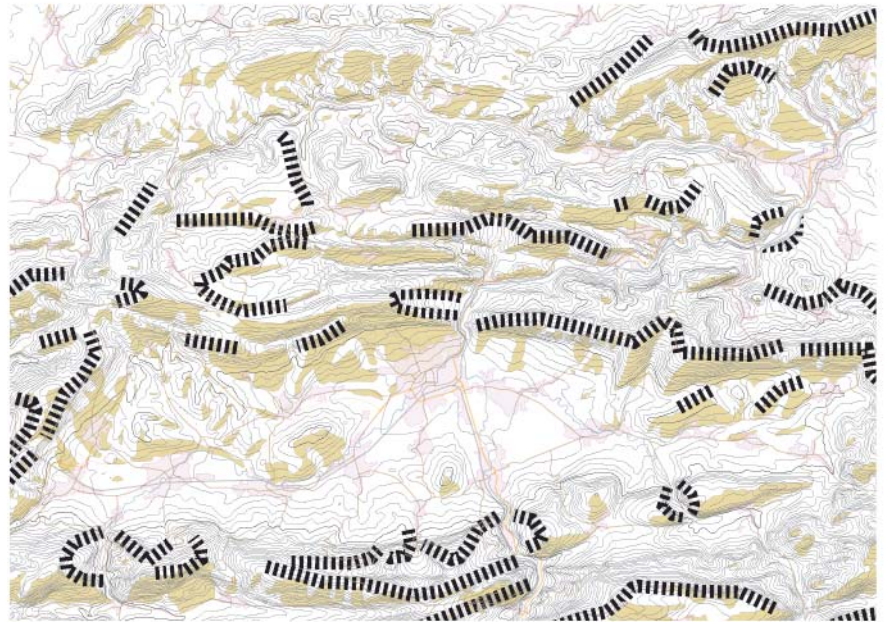






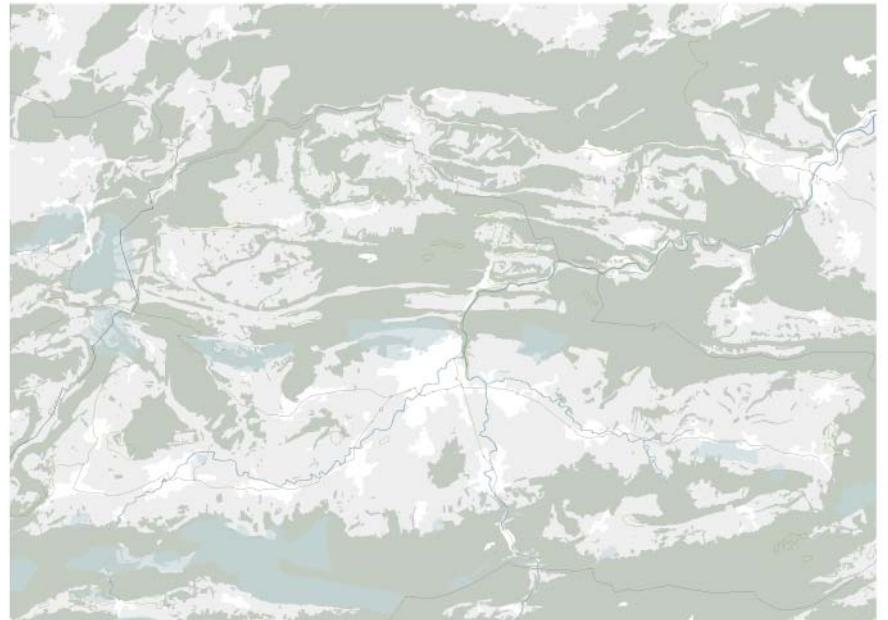
contrasts_VAST/ HOMOGENEOUS BASIN - FURROWED INTERMED
the two basins are seperated through the wild intermediate zone





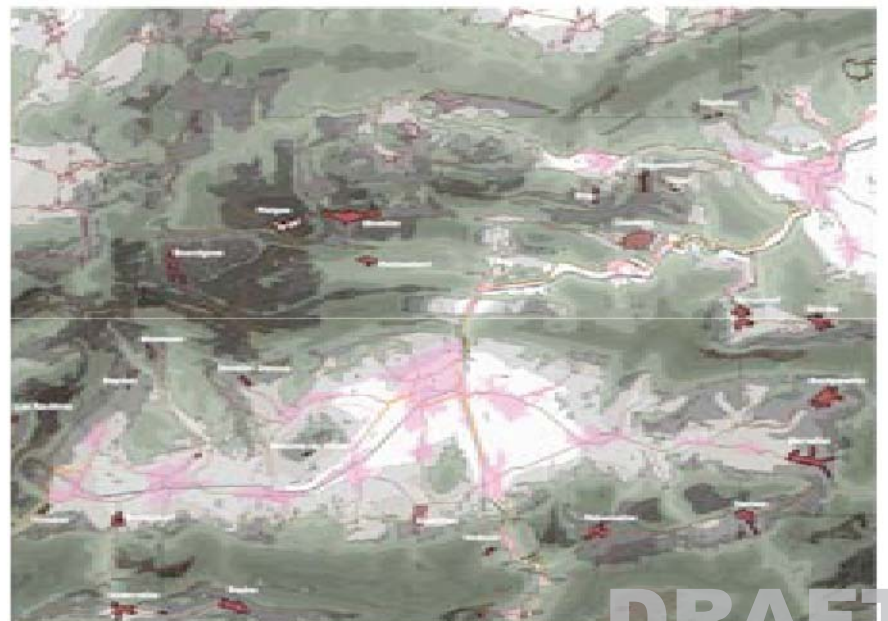
morphology / orientation

crest
southslope
settlement

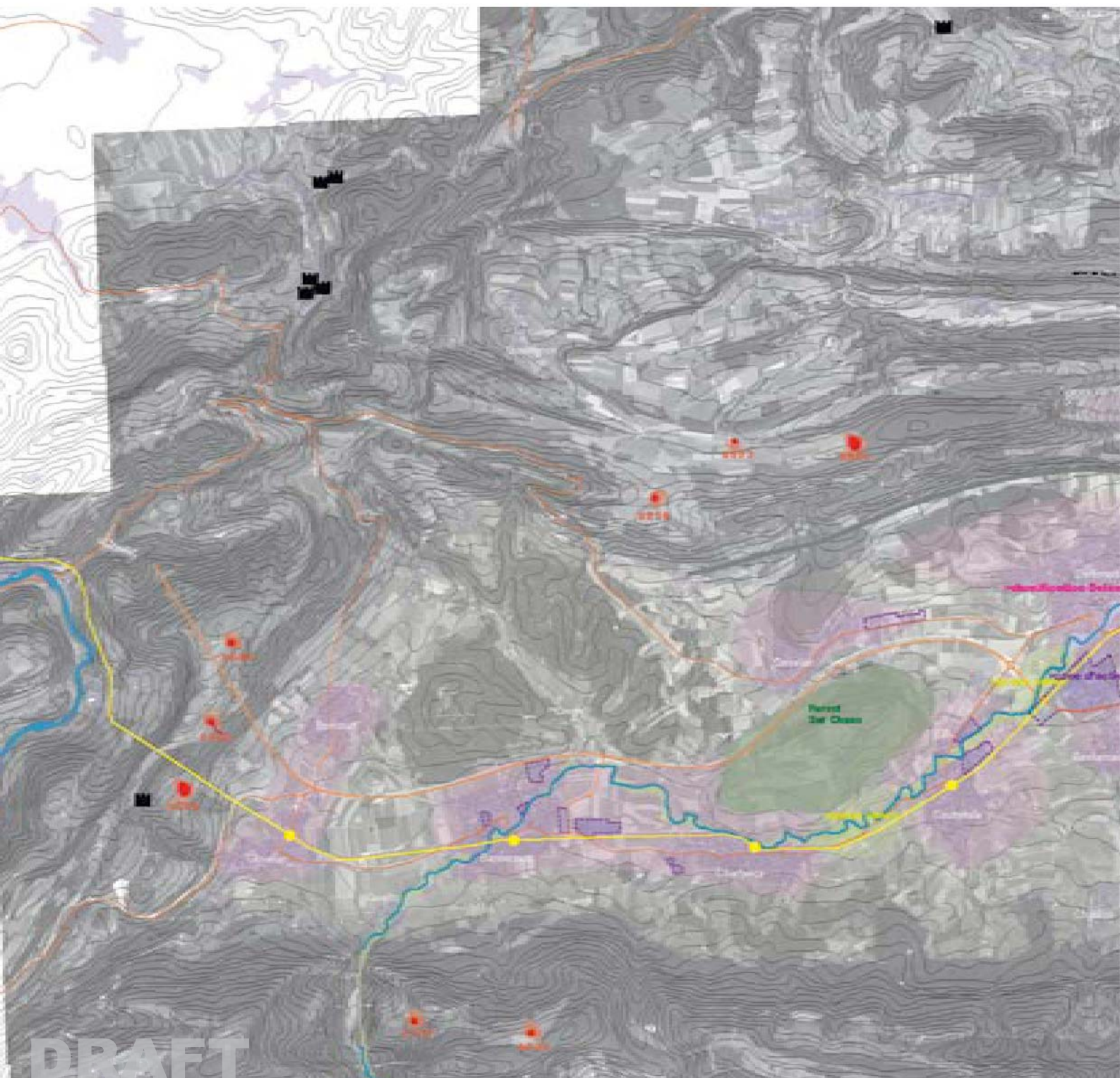


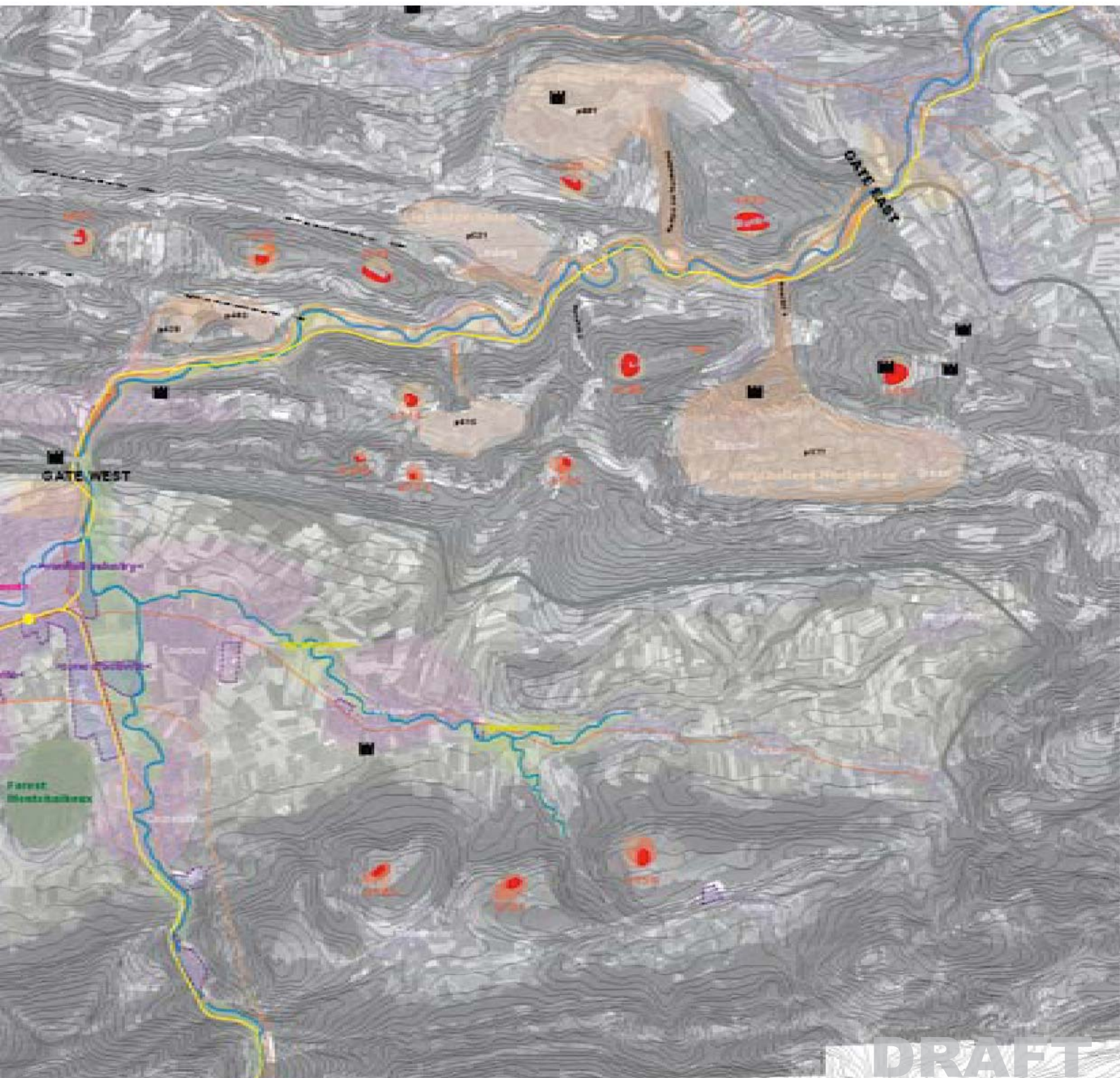
greensurfaces

renaturalisation project river Bir
nature-reservoir
groundwater-reservoir
forest
agriculture / pasture



hidden settlements around Basin-Delémont and Transit Valley





references_POSSIBLE INTERVENTION: LIVING IN THE GREEN



Greece - theatre imbedded in the landscape





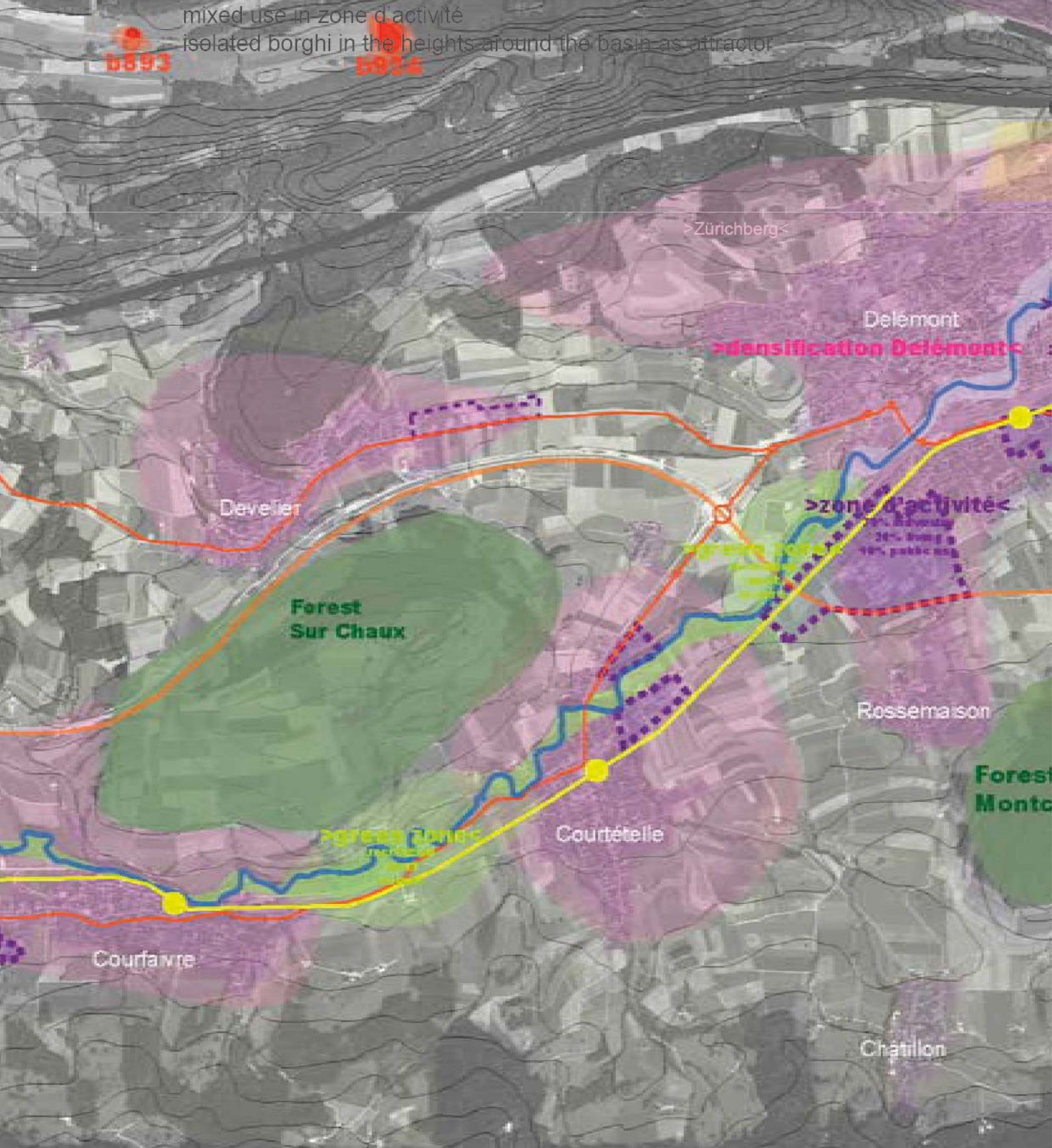
Settlement project in Ireland - contrast between urban tissue and wild landscape (author unknown)

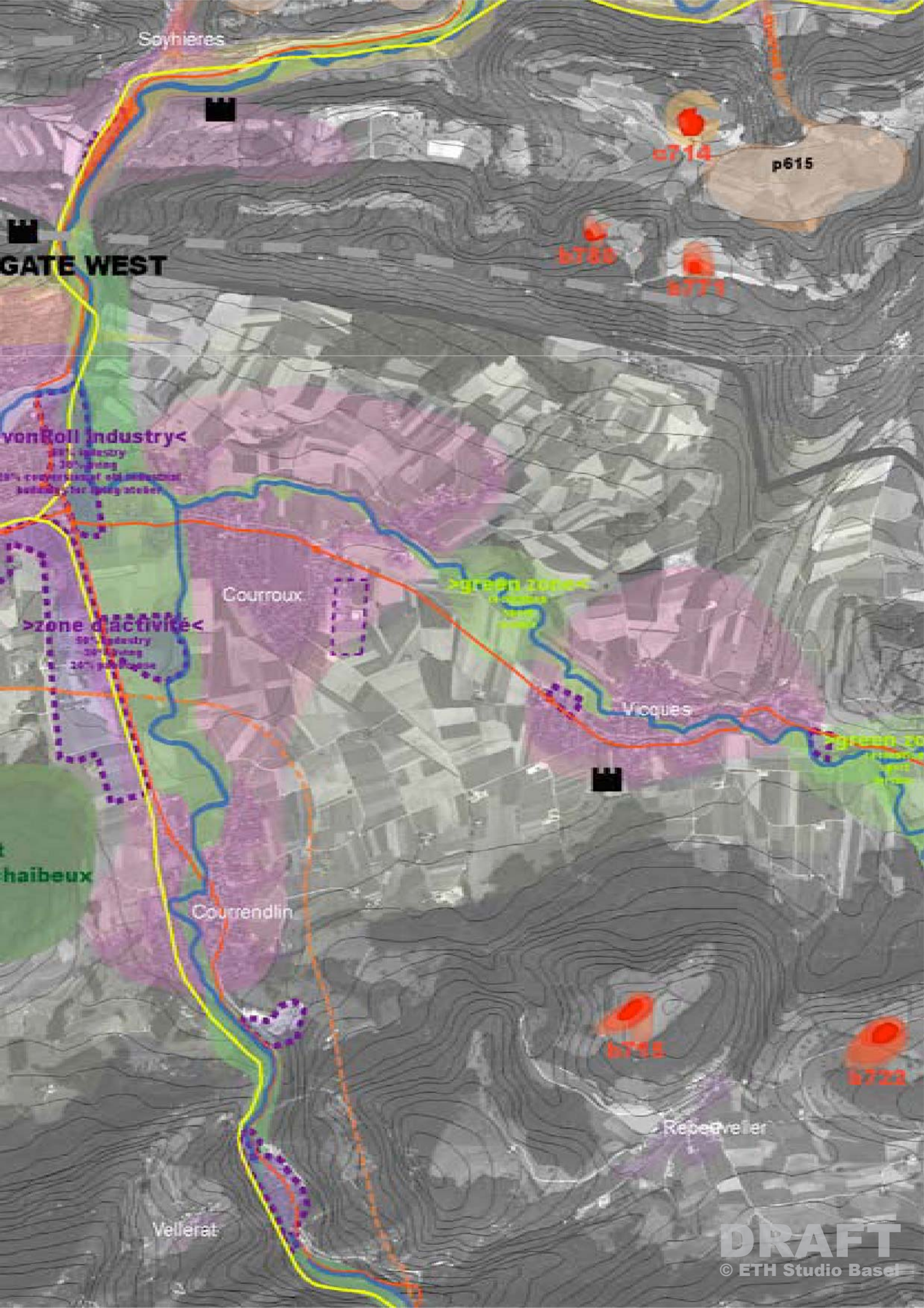


Ferrette - contrast between built mass and wild nature

intervention_GARDENCITY

- settlement spread-out seperated by green zones
- continuation of renaturalisation of the three rivers
- densification and enhance urban center Delémont
- extension southslope Delémont (Zürichberg)
- mixed use in zone d'activité
- isolated borghi in the heights around the basin as attractor





Soyhières



b714

p615

GATE WEST

b788

b779

vonRoll Industry

28% industry
30% green
28% conversion of old industrial
buildings for living spaces

Courroux

green zone

zone d'activité

50% industry
30% green
20% public space

Vicques

green 20

haibeux

Courrendlin

b748

b722

Rebœvelier

Veillerat

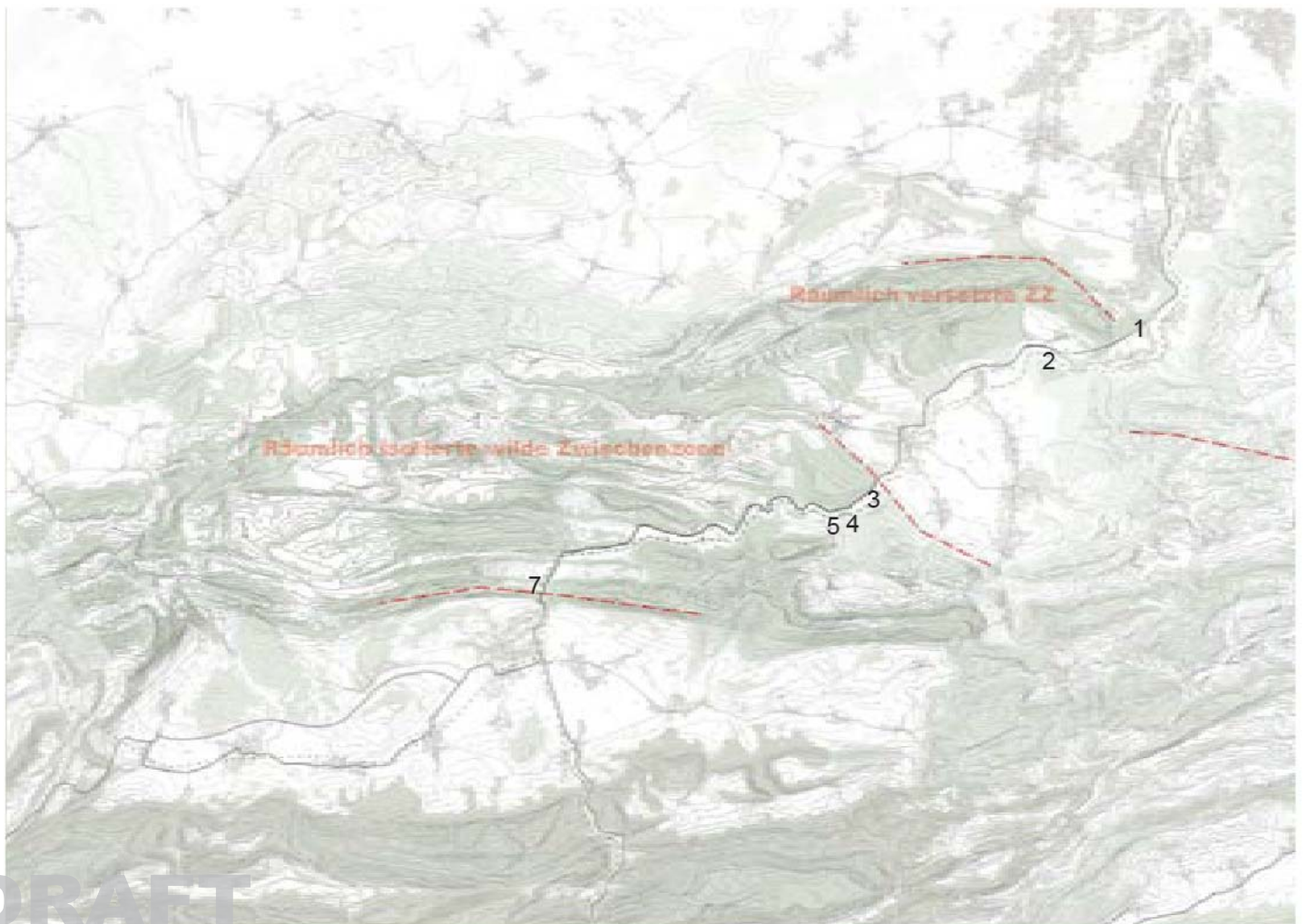
DRAFT

© ETH Studio Basel





Aesch - Delémont_ "SCHWELLE" TO THE JURA





1 Castle Angenstein



2 Laufen-Basin



3 After Laufen



4 Bärschwil



5 Bärschwil



6 Railway by Oberrüti

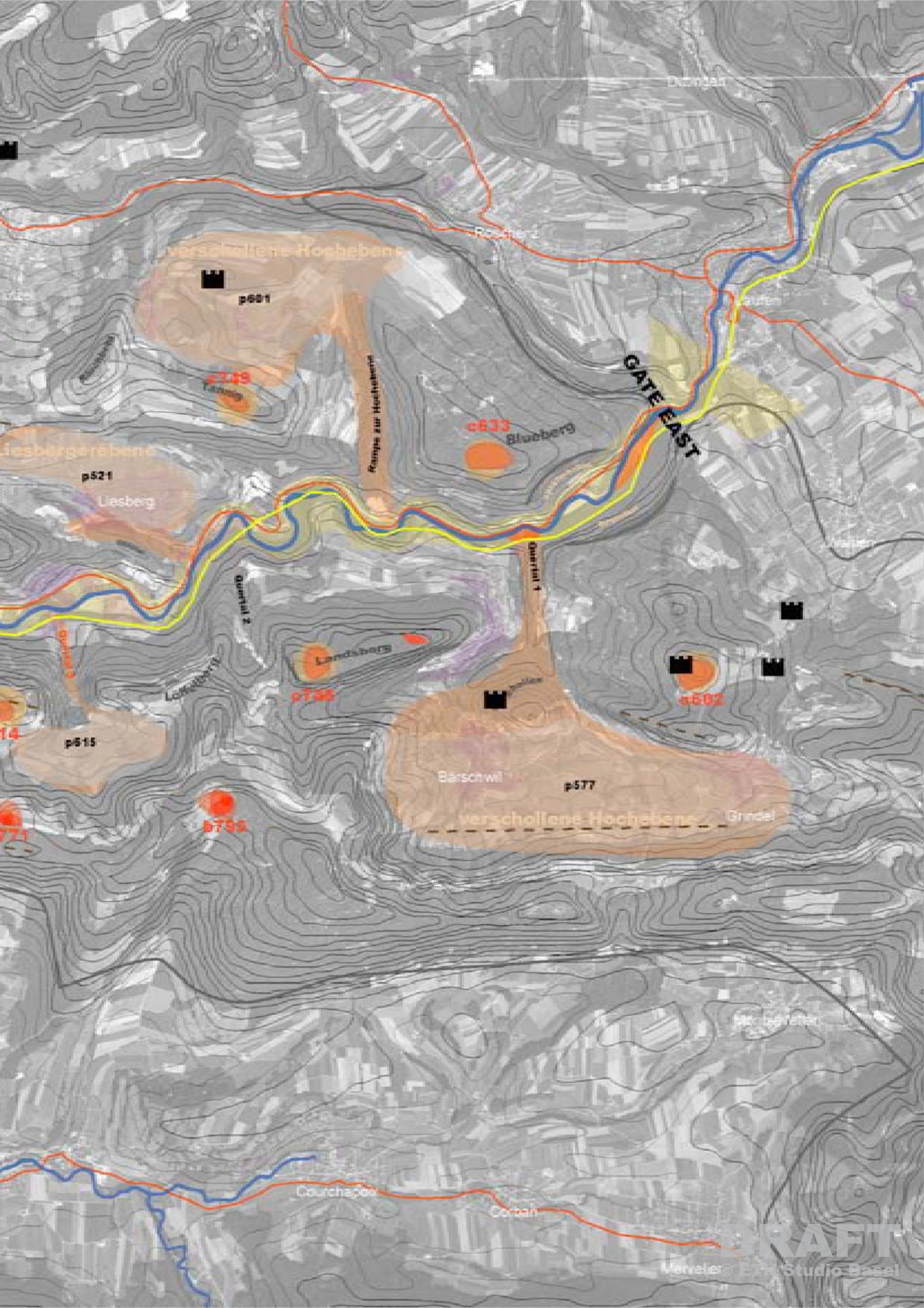


7 Industry in Zwingen

intervention_INTERMEDIATE ZONE

extension of existing settlements at hidden elevated plains
urban accents in the heights as exclusive locations





verschollene Hochebene

p601

c149
Liesberg

Kampus zur Hochschule

c633

Blüchberg

GATE EAST

Liesbergerebene

p521

Liesberg

Quartial 2

c146

Landsberg

Quartial 1

c502

c14

p615

Landsberg

Bärschwil

p577

verschollene Hochebene

Grundel

c771

c795

Couchapfel

Corban

DRAFT

Merete © EPH Studio Basel