

Megastructures

There are three groups of megaobjects. The historical ones with no direct connection to the transport infrastructure. The housing, office-towers and shoppingmalls wich are located at the crossings of the transport infrastructure. This group is much "deeper" linked into the urban structure. The third group is often monofunctional and isolated from the surrounding.

megaobjects



Kowloon Walled City



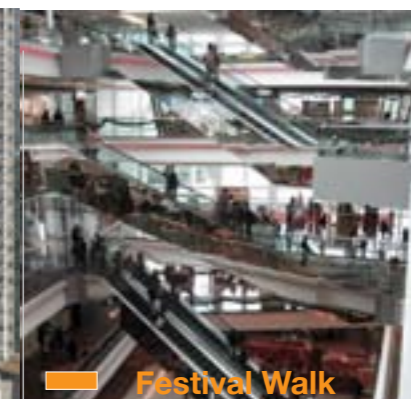
Chunking Mansion



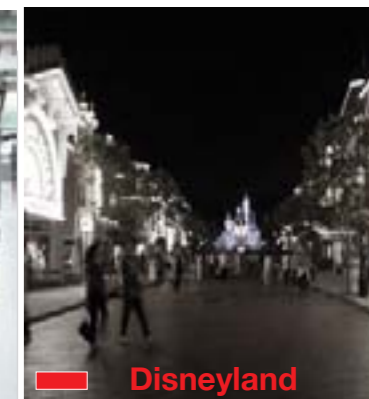
Kowloon station



Tung Chung Plaza



Festival Walk



Disneyland

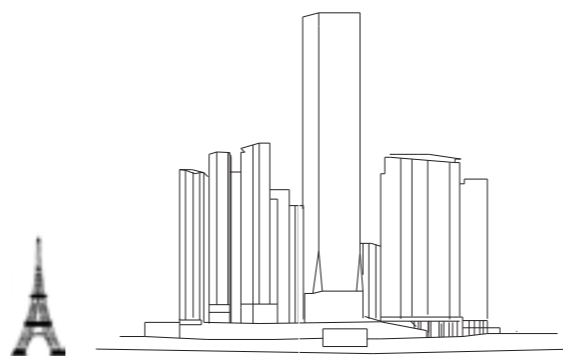
form / shape / scale



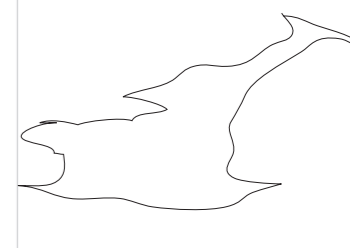
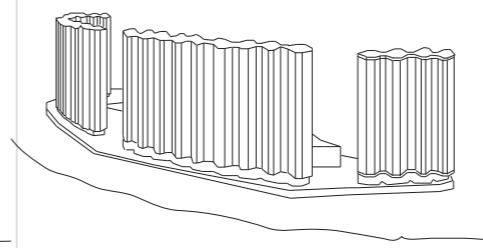
200m x 100m and max 15 floors high



120m x 60 26 floors high



570m high



Kowloon Station X 6

urban situation today



demolition in 1984



program circulation

- housing
- hotel
- office
- retail: shop, cinemax, restaurant
- metro/ train station

