

# PYRAMIDS AREA

## Ancient Egypt

The three largest and best preserved pyramids were built at Giza at the beginning old kingdom of ancient Egypt. The Pharaohs let them build as they'r final resting place.

Since the roman domination the pyramids and with them Giza lost importance. A long time folowed where Egypt became captured and taken many times.

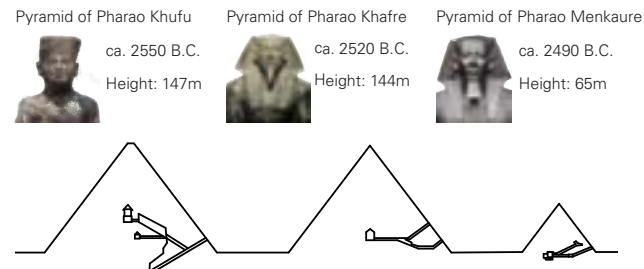


Fig. 1 Pyramids of Giza, built app. 2550 - 2490 B.C.



Fig. 2 Rosetta Stone

## Modernisation

In 1798 Napoleon came to Cairo and let make a decryption of the Rosetta Stone. That was an initial part for modern egyptology, which plays a role in today's tourism.

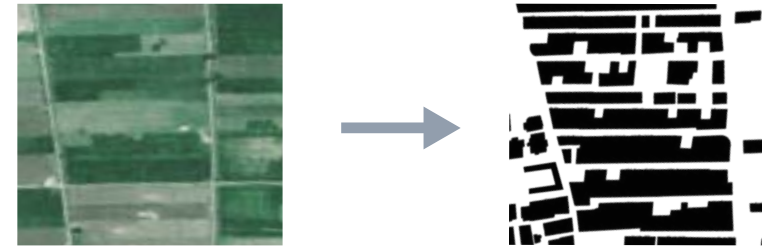
The Kasr-el-Nil bridge connected Cairo with the rural western side of the Nile and with it with the Pyramids. It has been constructed in context of the Suez Canal opening in 1869. With the bridge the way for early tourism was opened. After that Giza grew along the connection road El-Ahram to the pyramids.



Fig. 3 Kasr-el-Nil Bridge

## Infitah

During and after the war with Israel (1967-1979) people were evacuated out of the sinai region and the state spent no money to come up for a replacement. So a large area of agricultural land beneath Al-Ahram and El Malek Faisal has been rapidly transformed into a low-income housing area which was built up from the settlers themselves and is officially considered as informal. The pilicy of President Sadat brought economic reforms and with the informality comes allwell the neoliberality which has great impact on tourism.



Transformation of former agricultural land to low-income housing area



Fig. 4 Agricultural land next to low-income housing



Fig. 5

The statistic shows the percent change of fertility transition between 1986 and 1996

## Cairo 2050

In 2009 the Egyptian ministry of housing announced the ambitious project Cairo 2050. Key changes are green lunges in the middle of the city and the Khufu Ave which is 8 km long and connects the Pyramids straight with Zamalek and cutts through the informal fabric of Bulaq al-Dakour where the political opposition organization Muslim Brotherhood is predominant.



Fig. 6 Cairo 2050 Plan with Khufu Ave



# MAP OF PYRAMIDS



**Fig. 7**  
Perspective of point A:  
Main road leading to pyramids



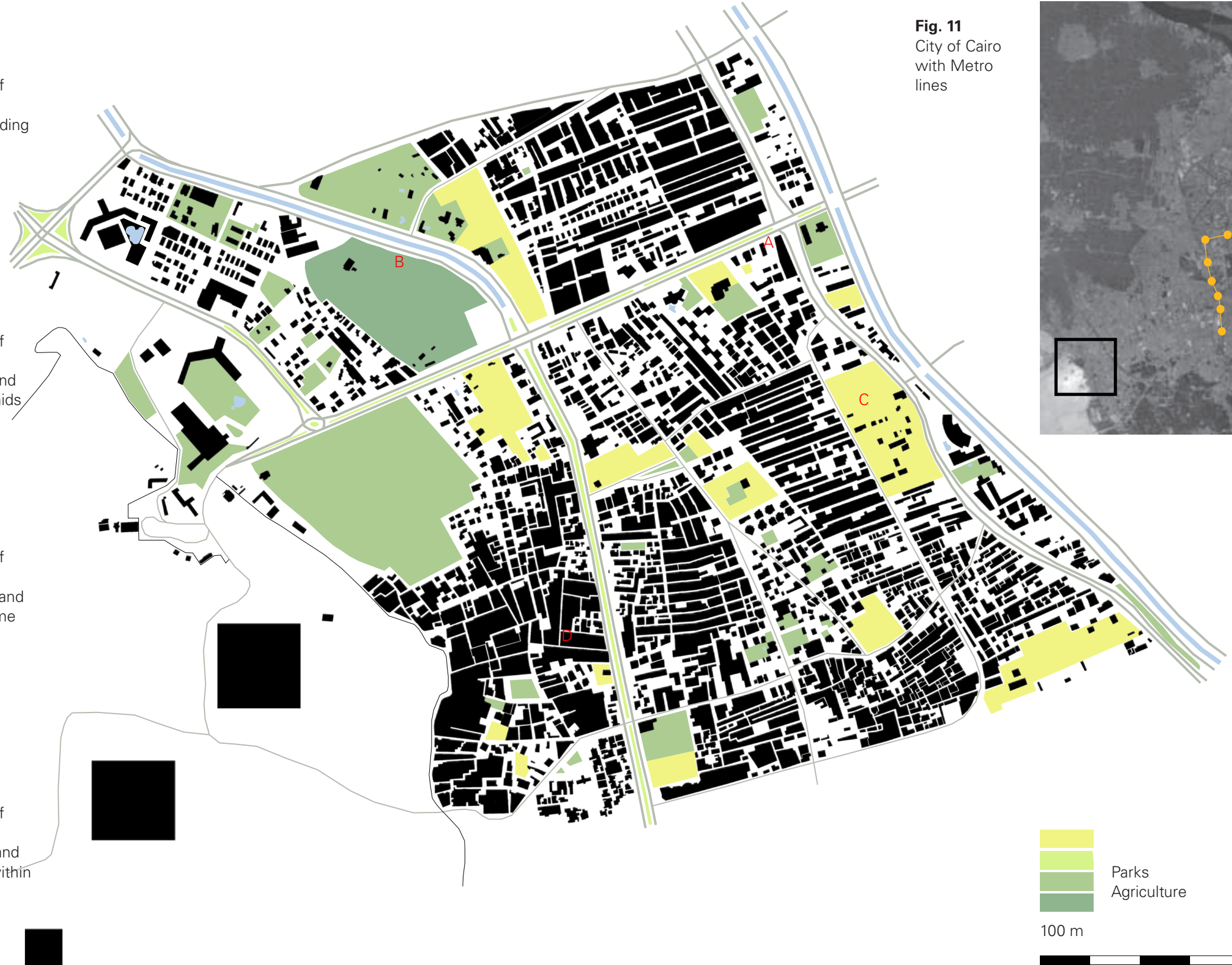
**Fig. 8**  
Perspective of point B:  
Agricultural land next to pyramids



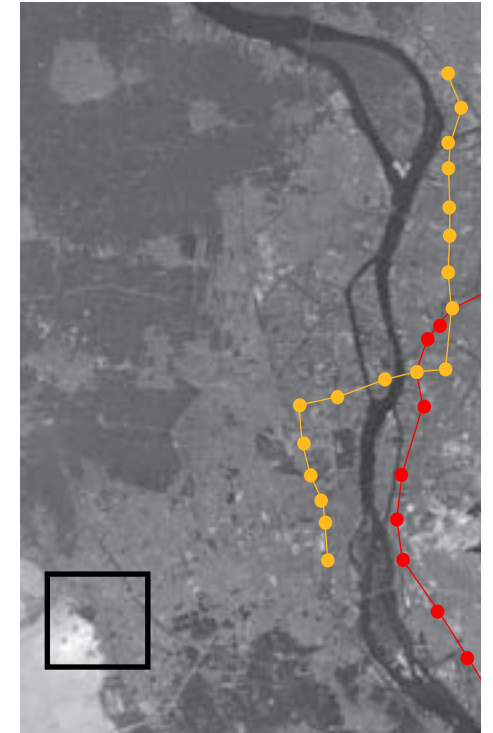
**Fig. 9**  
Perspective of point C:  
Vast unused land and low income housing



**Fig. 10**  
Perspective of point D:  
Small shops and restaurants within housing area



**Fig. 11**  
City of Cairo  
with Metro  
lines

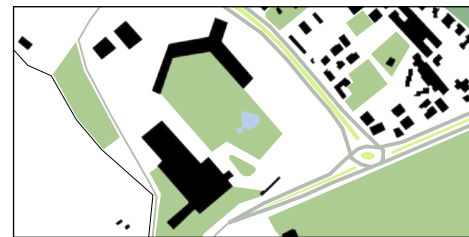
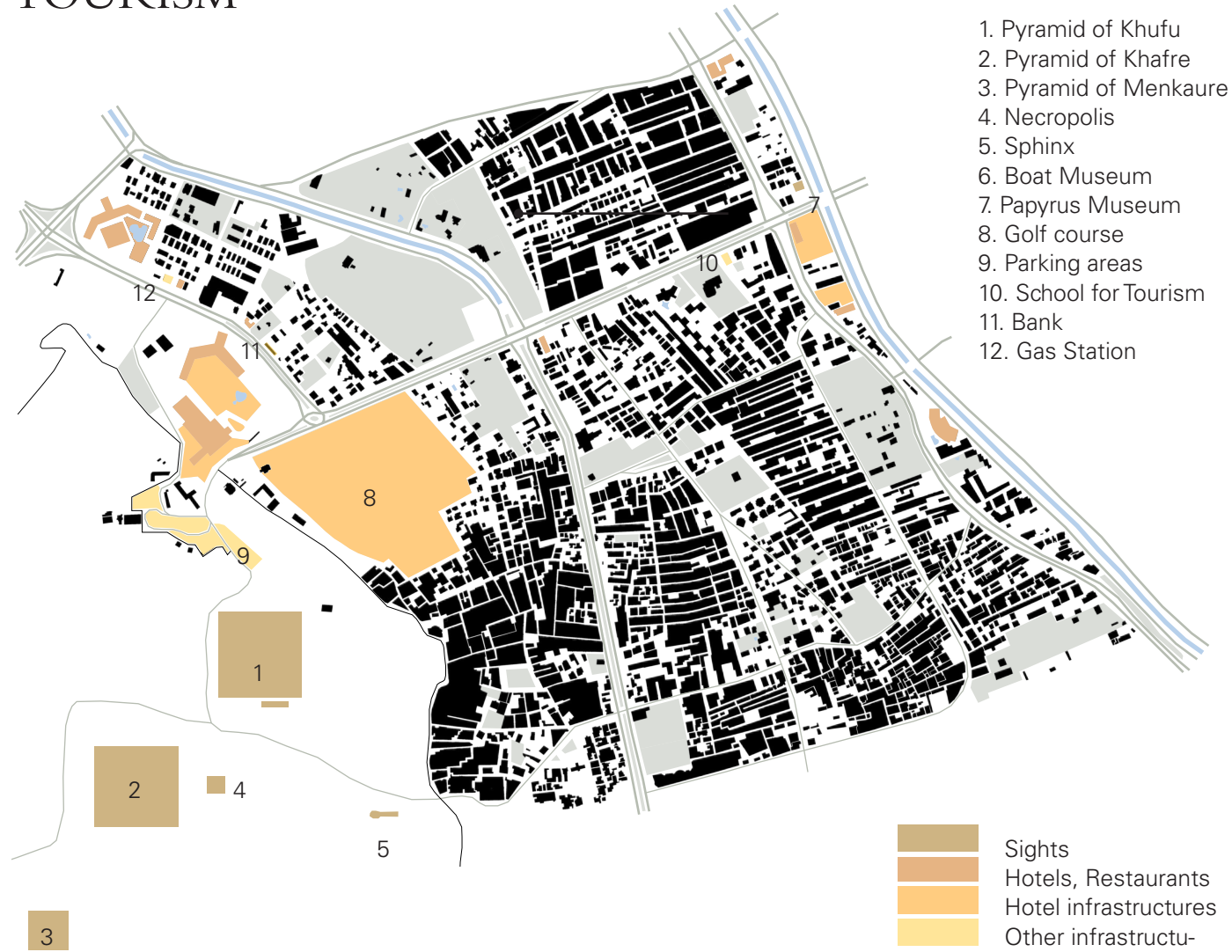


Parks  
 Agriculture

100 m



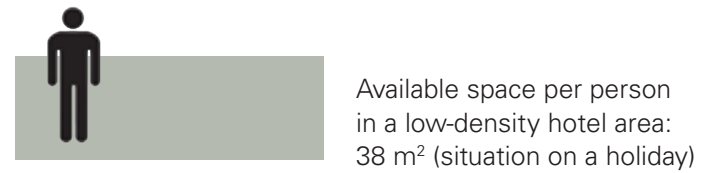
# TOURISM



Big-scale hotel infrastructures



Fig. 11  
Mass tourism at the pyramids



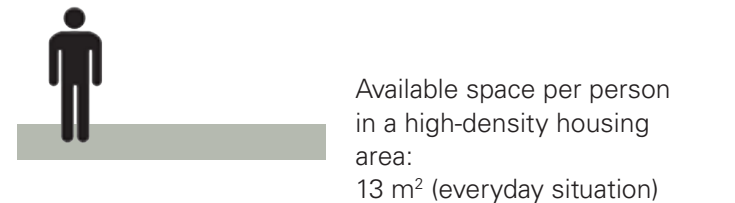
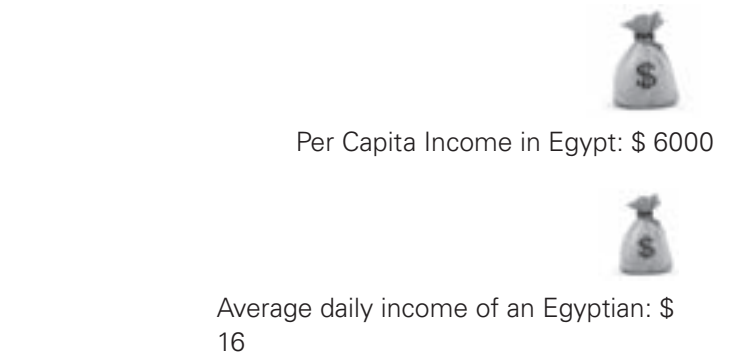
# LOW INCOME HOUSING



Small-scale housing areas with little public service



Fig. 12  
Low income housing in pyramids area



## SOURCES

**Sens, Carsten; Gritzmann, Lutz:**

**„Was ist Hypertext?“**

<http://paedpsych.jk.uni-linz.ac.at/PAEDPSYCH/NETLEHRE/NETLEHRELITORD/SENSGRUETZMANN/hyperei.htm>

[http://www.unicef.org/infobycountry/egypt\\_statistics.html](http://www.unicef.org/infobycountry/egypt_statistics.html)

<https://www.cia.gov/library/publications/the-world-fact-book/geos/eg.html>

## IMAGE CREDITS

**Fig 1**

**keirper-stock**, <http://browse.deviantart.com/?qh=&section=&q=pyramids#/d122dya>

**Fig 2**

**Dahl Jeff**, <http://de.wikipedia.org/wiki/%C3%84gyptologie>

**Fig 3**

**bassem**, <http://madarati.blogspot.com/>

**Fig 4**

**MacXit**, <http://www.panoramio.com/photo/19409515>

**Fig 5**

**Cairo Drill Topics**

**Fig. 7**

**mrcelijus**, <http://www.panoramio.com>  
(Download 06.10.2010, <29062658.jpg>).

**Fig. 8**

**Mehmet Hakan**, <http://www.panoramio.com>  
(Download 06.10.2010, <29000631.jpg>).

**Fig. 9**

**micabdo**, <http://www.panoramio.com>  
(Download 06.10.2010, <6754493.jpg>).

**Fig. 10**

**beute3**, <http://www.panoramio.com>  
(Download 06.10.2010, <37598262.jpg>).

**Fig. 11**

**Google**, <http://maps.google.ch>  
(Download 08.10.2010).

**Fig. 12**

**byron**, <http://picasaweb.google.com>  
(Download 06.10.2010, <6llszTvJXgRLQ.jpg>).

**Fig. 13**

**beute2**, <http://www.panoramio.com>  
(Download 06.10.2010, <33713892.jpg>).