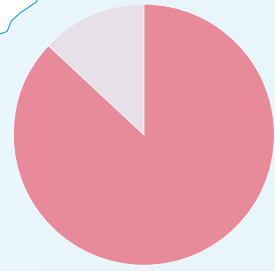
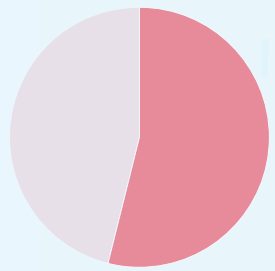


Demography of Lebanon and Syria

POPULATION DENSITY



Lebanon
87% live in urban areas, mainly in Beirut and vicinity (CIA World factbook)



Syria
54% live in urban areas, the urban population is distributed among multiple major cities (CIA World factbook)



LEBANON
area: 10,400 km²
population: 4,017,095 (July 2009 est.)
density of population: 386,3 p/km²
urban population: 87% of total population (2008)
rate of urbanization: 1.2% annual rate of change (2005-10 est.)
languages: Arabic (official), French, English, Armenian

SYRIA
area: 185,180 km²
population: 20,178,485
density of population: 109 p/km²
urban population: 54% of total population (2008)
rate of urbanization: 3.1% annual rate of change (2005-10 est.)
languages: Arabic (official); Kurdish, Armenian, Aramaic, Circassian widely understood; French, English somewhat understood

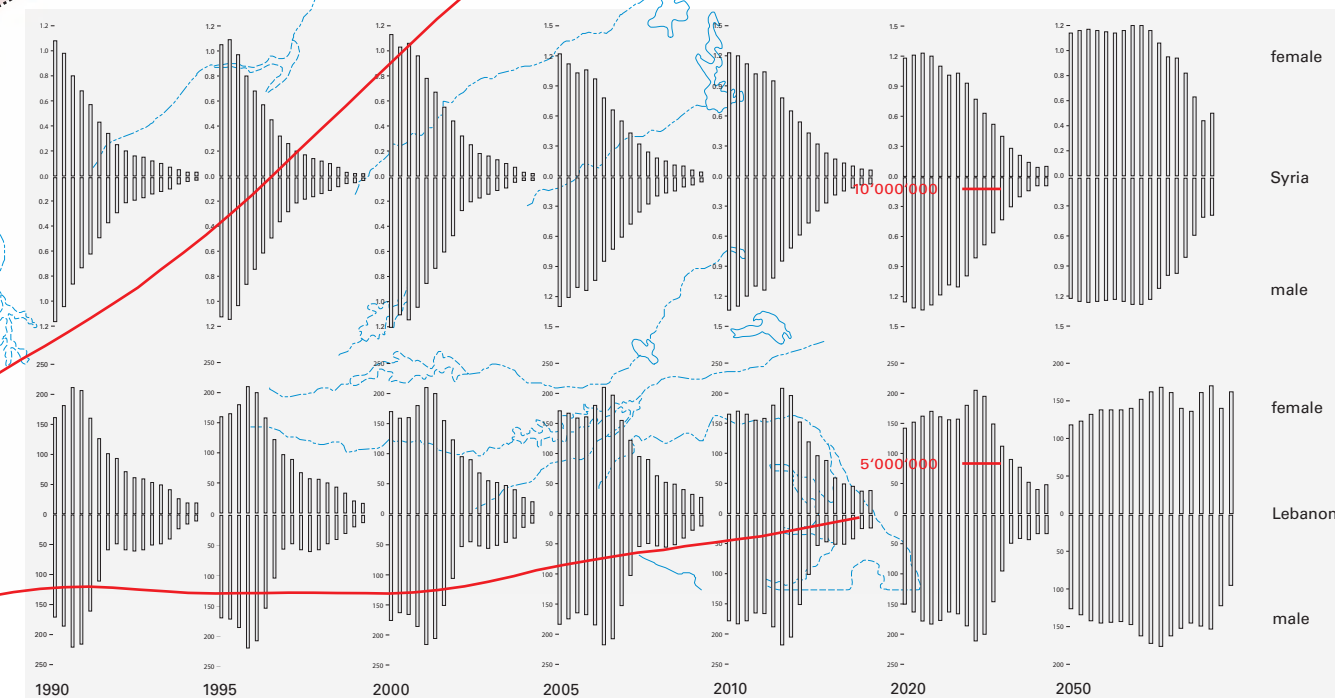
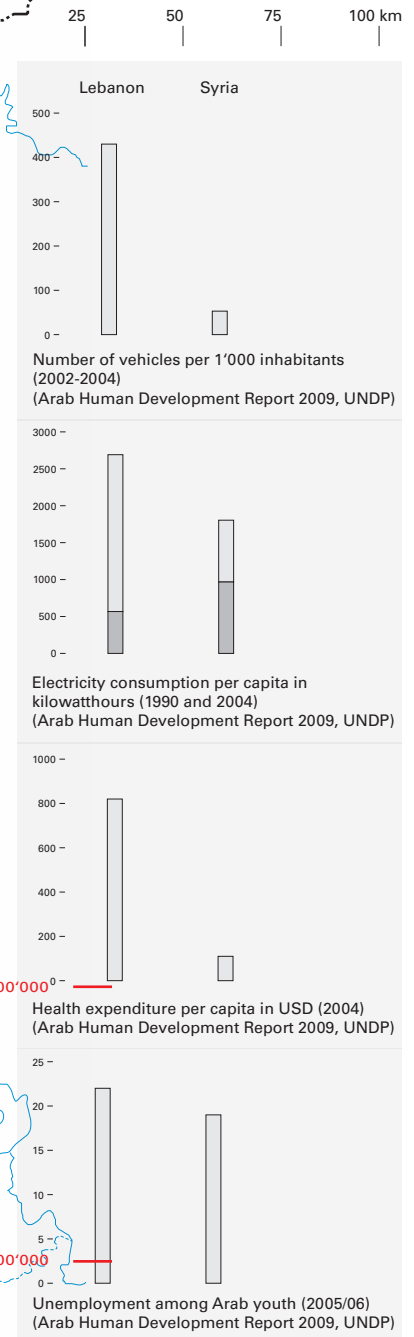
TURKEY

SYRIA

IRAQ

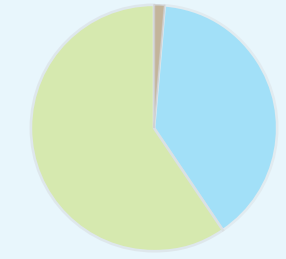
ISRAEL

JORDAN



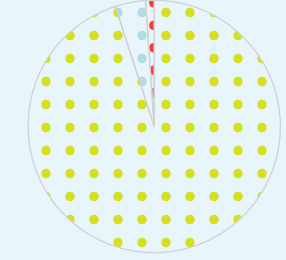
Population pyramids (Arab Human Development Report 2009, UNDP)
Population growth since 1961 (FAO)

Demography of Lebanon and Syria



Religions Lebanon

- 59.7% Muslim (Shia, Sunni, Druze, Isma'iliite, Alawite or Nusayri)
- 39% Christian (Maronite Catholic, Greek Orthodox, Melkite Catholic, Armenian Orthodox, Syrian Catholic, Armenian Catholic, Syrian Orthodox, Roman Catholic, Chaldean, Assyrian, Coptic, Bahaiyyah, Protestant)
- 1.3% Other (CIA World factbook)



Ethic groups Lebanon

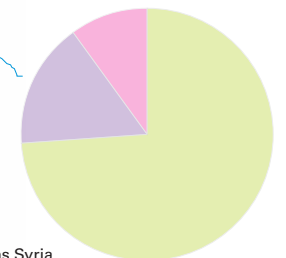
- 95% Arab
- 4% Armenian
- 1% Other (CIA World factbook)

Religious groups

- Christians (various denominations)
- Maronites
- Shia
- Sunni
- Orthodox
- Druze

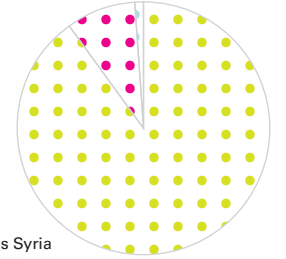
Ethic groups

- Druze
- Arabs
- Turkmens
- Kurds
- Jews



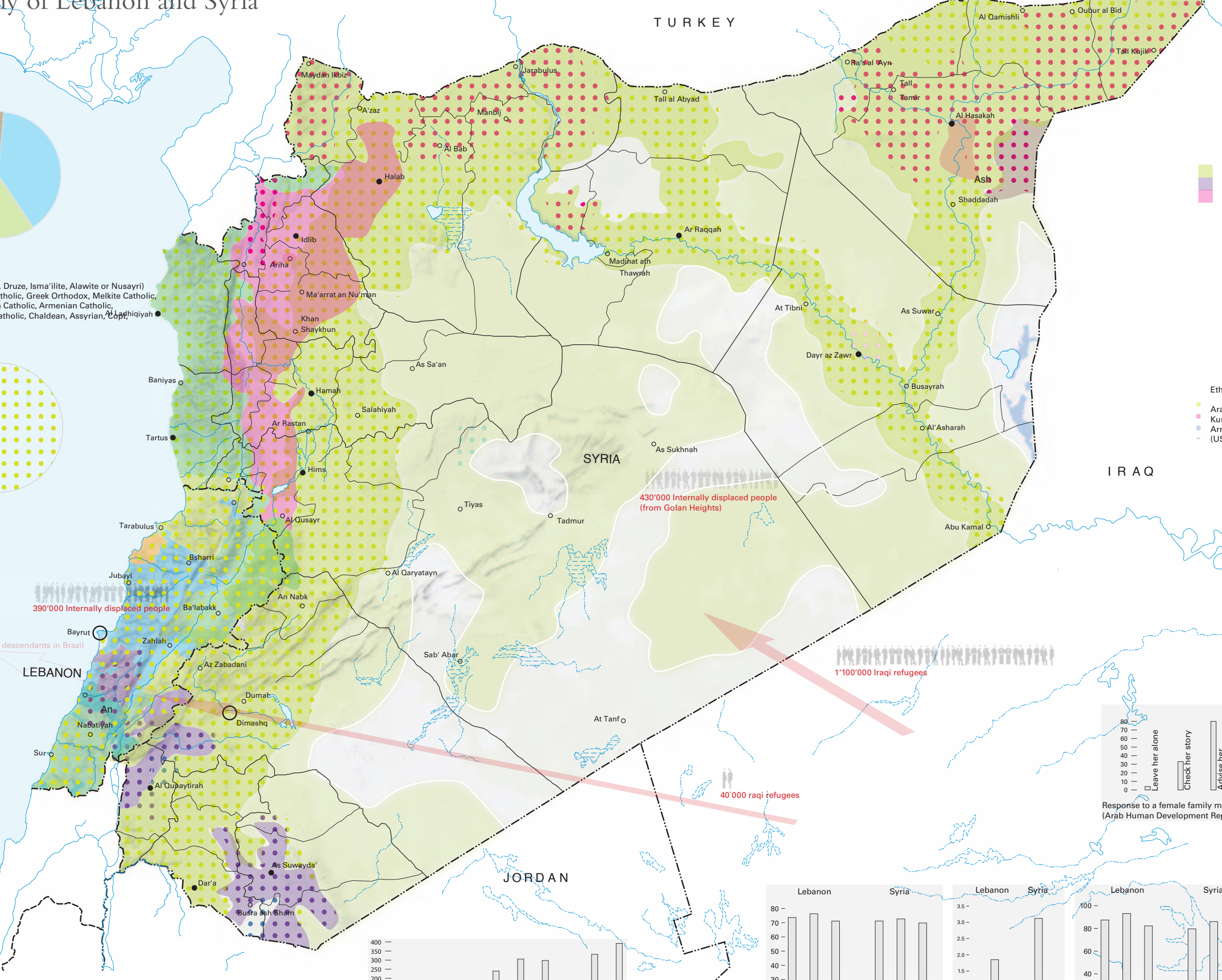
Religions Syria

- Sunni Muslim 74%
- Alawite, Druze, and other Muslim sects 16%
- Christian (various sects) 10%
- Jewish (tiny communities in Damascus, Al Qamishli, and Aleppo) (CIA World factbook)



Ethic groups Syria

- Arabs 90%
- Kurds 9%
- Armenians, Syriacs, Syrian Turkomans and others 1% (US Department of State)



390'000 Internally displaced people

430'000 Internally displaced people (from Golan Heights)

1'100'000 Iraqi refugees

40'000 raqi refugees

7'000'000 descendants in Brazil

